

Leading Economic Indicators



Kenya Inflation rate



AUGUST 2022

List of Tables

Table 1(a): Kenya Consumer Price Indices	6
Table 1(b): Kenya Inflation rate	7
Table 2: Mean Foreign Exchange rates of Kenyan Shilling against Selected Major Currencies at the end of the Month	8
Table 3: Interest rate (%)	9
Table 4: Nairobi Securities Exchange	10
Table 5(a): Money Supply	11
Table 5(b): Gross Foreign Exchange Reserves	12
Table 6: Coffee Sales and Prices*	14
Table 7: Tea Production and Auction Prices	14
Table 8: Cane Deliveries	16
Table 9(a): Average Monthly Retail Prices for Dry Maize, 2021 (per Kg)	17
Table 9(b): Average Monthly Retail Prices for Dry Maize, 2022 (per Kg)	18
Table 9(C): Average Monthly Retail Prices for Dry Beans, 2021 (per Kg)	19
Table 9(d): Average Monthly Retail Prices for Dry Beans, 2022 (per Kg)	20
Table 10: Exports of Coffee and Tea	21
Table 11: Monthly Exports of Fresh Horticultural Produce	22
Table 12: External Trade	23
Table 13(a): Major Destinations of Domestic Exports	24
Table 13(b): Domestic Exports by Broad Economic Category	25
Table 14 (a) Major Origins of Imports	26
Table 14(b): Imports by Broad Economic Category	27
Table 14 (c): Mobile Money Transactions	28
Table 14(d): International trade in ICT	29
Table 15(a): Local Electricity Generation by Source	30
Table 15(b): Generation and Consumption of Electricity	31
Table 15(c): Consumption of Petroleum Fuels	32
Table 15(d): Average Retail Prices for Selected Fuel Products within Nairobi	33
Table 15(e): Average Retail Prices for Selected Fuels in Kenya (National Average Retail Prices)	34
Table 15(f): Opec Reference basket and Murban Crude Oil Prices	35
Table 16: Value of Building Plans Approved for Nairobi City County	35
Table 17(a): Domestic Production of Sugar	36
Table 17(b): Production of Soft Drinks	36
Table 17(c): Production of Assembled Vehicles	37
Table 17(d): Production of Galvanized Sheets	37
Table 17(e): Cement Production and Consumption	38
Table 17(f): Milk Intakes in the Formal Sector	39
Table 18: Visitor Arrivals through J.K.I.A and M.I.A	40
Table 19(a): Jomo Kenyatta international airport-Embarked Passengers by Port of Destination	41
Table 19(b): Jomo Kenyatta international airport- Landed Passengers by Port of Origin	42
Table 19(c): New Vehicle Registration	43
Table 19(d): Passenger and Cargo Movement on the Standard Gauge Railway	43
Table 19(e): Monthly Cargo Throughput at the port of Mombasa	44

LIST OF FIGURES

	Page Number
Figure 1: Inflation rates	8
Figure 2: End of Month Mean Exchange rate of Kenya Shillings against Major Selected Currencies	9
Figure 3: Nairobi Securities Exchange 20 Share Index.....	11
Figure 4: Coffee Sales at the Nairobi Coffee Exchange	14
Figure 5: Tea Production	15
Figure 6: Cane Deliveries	16
Figure 7: Electricity Generation by Source	30
Figure 8: Average Prices for Liquefied Petroleum Gas in Kenya ('000 KSh per 13 Kg cylinder)	34
Figure 9: Milk Intake in the Formal Sector.....	39
Figure 10: Visitor Arrivals through J.K.I.A and M.I.A	40

KEY HIGHLIGHTS

OVERVIEW

The Monthly Leading Economic Indicators report highlights changes in Consumer Price Indices (CPI) and inflation, interest & exchange rates. In addition, the report details changes in selected indicators of international trade, agriculture, energy, manufacturing, building and construction, tourism and transport.

MACROECONOMIC INDICATORS

The Consumer Price Index (CPI) increased from 125.05 points in July 2022 to 125.58 points in August 2022. The overall rate of inflation rose from 8.32 per cent to 8.53 per cent over the same period. In August 2022, the Kenyan Shilling depreciated against all other major currencies except the Ugandan Shilling. The average yield rate for the 91-day Treasury bills, which is a benchmark for the general trend of interest rates rose from 8.21 per cent in July 2022 to 8.58 per cent in August 2022.

The Nairobi Securities Exchange (NSE) 20 share index increased from 1,701 points in July 2022 to 1,751 points in August 2022. During the same period, the total number of shares traded decreased from 264 million to 208 million. The total value of NSE shares traded decreased from KSh 8.00 billion in July 2022 to KSh 5.34 billion in August 2022.

Broad money supply (M3), a key indicator for monetary policy formulation, decreased from KSh 4,491.45 billion in July 2022 to KSh 4,449.19 billion in August 2022. The value of Gross Foreign Exchange Reserves decreased from KSh 1,482.09 billion in June 2022 to KSh 1,453.37 billion in July 2022. Similarly, the value of Net Foreign Exchange Reserves dropped from KSh 455.44 billion to KSh 402.19 billion during the same period.

AGRICULTURE



The quantity of coffee auctioned at the Nairobi Coffee exchange was 4,379.93 MT in August 2022. The quantity of produced tea dropped from 43,268.31 MT in June 2022 to 33,854.27 MT in July 2022. The price of processed tea dropped slightly from KSh 286.30 per kilogram in June 2022 to KSh 280.37 per kilogram in July 2022.

The quantity of cane deliveries decreased from 751.84 thousand metric tonnes in July 2022 to 512.85 thousand metric tonnes in August 2022.

The quantity of vegetable exports increased from 3,386.96 MT in July 2022 to 5,959.74 MT in August 2022. However, the value of vegetable exports decreased from KSh 1,294.81 million to KSh 1,289.40 million during the same period.

INTERNATIONAL TRADE

Volume of trade rose from KSh 288.52 billion in July 2022 to KSh 312.40 billion in August 2022. The value of total exports decreased from KSh 75.53 billion in July 2022 to KSh 72.92 billion in August 2022, while the value of imports increased from KSh 212.99 billion in July 2022 to KSh 239.48 billion in August 2022. Domestic exports by Broad Economic Category (BEC) indicated that food and beverages was the main export category in August 2022 accounting for 41.34 per cent of the domestic exports, while non-food industrial supplies accounted for 30.48 per cent of the domestic exports.

Quantity of coffee exported decreased from 5,179.34 MT in July 2022 to 3,212.76 MT in August 2022 while its value dropped from KSh 3,824.46 million to KSh 2,482.09 million over the same period. The quantity of tea exported decreased from 45,583.93 MT in July 2022 to 42,940.45 MT in August 2022. The value of exported tea dropped from KSh 13,464.54 million to KSh 12,603.59 million over the same period.

Imports by BEC indicate that non-food industrial supplies was the main import category in August 2022 with a share of 37.38 per cent. Fuel and lubricants; Machinery & other capital equipment; and transport equipment accounted for 29.96, 10.20 and 5.48 per cent of the total value of imports, respectively. Food and beverages accounted for 10.04 per cent of the total imports in August 2022.

ENERGY



Total local electricity generation decreased from 1,110.57 million KWh in July 2022 to 1,098.92 million KWh in August 2022. In the international market, the price of the OPEC crude oil basket decreased from US Dollars 108.55 per barrel in July 2022 to US Dollars 101.90 per barrel in August 2022.

The national average domestic retail oil prices of motor gasoline premium, light diesel and Kerosene was KSh 159.94, KSh 140.91 and KSh 128.86 per litre respectively in August 2022. Charcoal prices averaged KSh 66.81 per Kg while the price of a 13-Kg cylinder of gas averaged KSh 3,103.17 during the same period.

MANUFACTURING, BUILDING AND CONSTRUCTION



The quantity of cement produced decreased from 785,317 MT in July 2022 to 753,968 MT in August 2022. Consumption of cement was 725,677 MT in August 2022. Sugar production decreased from 79,448 Metric tonnes in March 2022 to 68,508 Metric tonnes in April 2022. Production of assembled vehicles increased from 1,114 units in February 2022 to 1,154 units in March

2022. Milk uptake in the formal sector rose from 64.29 million litres in May 2022 to 65.69 million litres in June 2022.

ICT, TOURISM AND TRANSPORT



The total number of mobile money transactions was 184.81 million in August 2022 while their value was KSh 677.36 billion. The value of imports for telecommunication equipment increased from KSh 2.63 billion in June 2022 to KSh 2.79 billion in July 2022.

The total number of visitors arriving through Jomo Kenyatta (JKIA) and Moi International Airports (MIA) decreased from 116,189 persons in July 2022 to 102,139 persons in August 2022. The number of passengers who landed at Jomo Kenyatta International Airport (JKIA) decreased from 230,542 persons in July 2022 to 219,609 persons in August 2022. The Passengers who embarked at JKIA by port of destination decreased from 241,069 persons to 232,190 persons over the same period. Total monthly throughput at the port of Mombasa rose from 2,688.88 thousand metric tonnes in June 2022 to 2,987.05 thousand metric tonnes in July 2022.

Table 1(a): Kenya Consumer Price Indices

Kenya CPI: Base period February 2019=100

Group	Nairobi			Nairobi Combined	Rest of Urban Areas	Kenya CPI
	Lower Income	Middle Income	Upper Income			
2021						
January.....	113.63	106.20	105.63	110.30	114.20	112.58
February....	114.56	106.75	106.56	111.11	114.97	113.36
March.....	115.15	107.12	107.25	111.64	115.36	113.81
April.....	116.11	107.64	107.38	112.36	116.44	114.75
May.....	116.37	107.75	107.86	112.60	116.67	114.98
June.....	116.48	107.88	108.15	112.73	116.80	115.11
July.....	116.80	108.63	108.42	113.19	117.05	115.45
August.....	116.86	108.88	108.54	113.31	117.42	115.71
September.	117.16	109.27	109.30	113.70	117.77	116.08
October.....	117.60	109.42	109.42	114.00	118.57	116.67
November .	117.84	109.69	109.69	114.26	119.30	117.20
December..	119.56	110.37	110.09	115.49	120.26	118.27
2022						
January.....	120.04	110.44	110.16	115.79	120.67	118.64
February....	120.76	110.82	110.47	116.35	121.11	119.13
March.....	121.94	111.46	111.30	117.32	122.15	120.14
April.....	123.94	112.90	112.78	119.07	124.38	122.17
May.....	124.89	113.50	113.57	119.89	125.42	123.12
June.....	126.02	114.62	114.33	120.98	126.52	124.22
July.....	127.02	115.44	114.93	121.87	127.31	125.05
August.....	127.60	115.92	115.26	122.39	127.84	125.58

Notes

1.Nairobi Lower Income Group constitute of Households spending KSh. 46,355 or less per month in February 2015 (they are 70.89% of the households).

2.Nairobi Middle-Income Group constitute of Households spending between KSh. 46,356 up to and including KSh. 184,394 per month in February 2015 (they are 25.58% of the households).

3.Nairobi Upper Income Group constitute of Households spending above KSh. 184,395 per month in February 2015 (they are 3.53% of the households).

Table 1(b): Kenya Inflation rate

Period	Inflation Rates					
	Nairobi				Rest of Urban Areas	Kenya CPI
	Lower Income	Middle Income	Upper Income	Combined		
2021						
January.....	5.70	3.11	2.91	4.57	6.48	5.69
February.....	5.73	3.30	3.05	4.66	6.56	5.78
March.....	5.78	3.48	3.70	4.82	6.65	5.90
April.....	5.67	3.45	3.55	4.74	6.47	5.76
May.....	5.86	3.86	3.71	4.99	6.48	5.87
June.....	6.17	3.60	4.15	5.14	7.15	6.32
July.....	6.18	5.09	4.46	5.65	7.17	6.55
August.....	6.33	5.20	3.81	5.69	7.19	6.57
September.....	6.47	5.44	4.84	5.96	7.58	6.91
October.....	6.52	4.79	4.61	5.76	6.93	6.45
November.....	5.86	4.71	4.87	5.39	6.08	5.80
December.....	5.74	4.47	4.74	5.24	6.07	5.73
2022						
January.....	5.65	3.99	4.29	4.98	5.67	5.39
February.....	5.41	3.81	3.67	4.72	5.34	5.08
March.....	5.90	4.05	3.77	5.09	5.88	5.56
April.....	6.74	4.89	5.04	5.98	6.81	6.47
May.....	7.32	5.34	5.30	6.48	7.50	7.08
June.....	8.19	6.25	5.71	7.31	8.32	7.91
July.....	8.75	6.27	6.01	7.67	8.76	8.32
August.....	9.19	6.47	6.20	8.01	8.88	8.53

Figure 1: Inflation rates

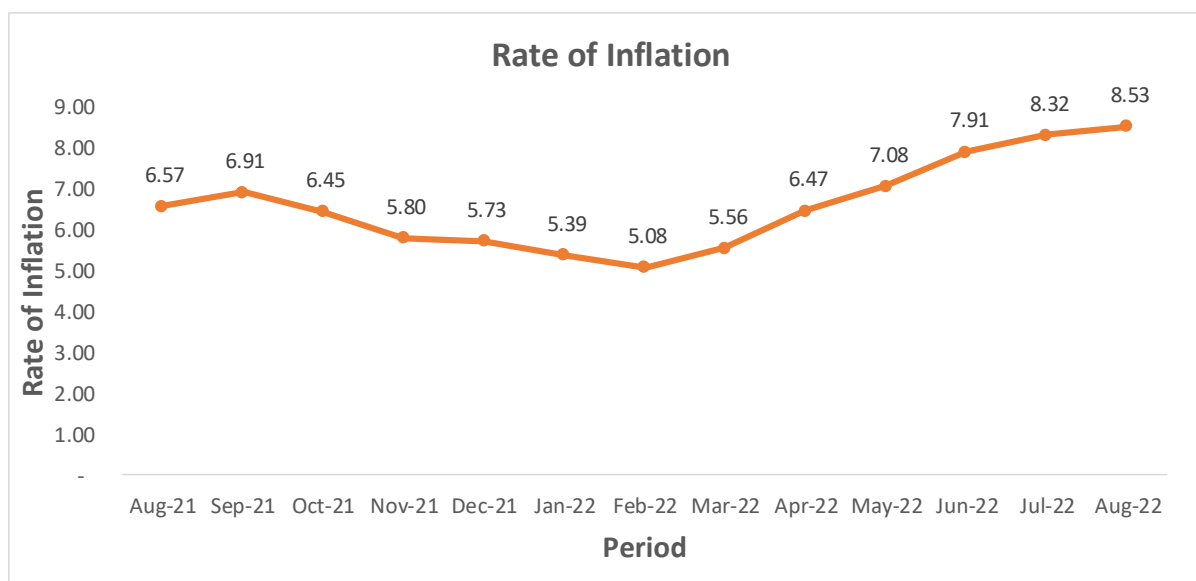


Table 2: Mean Foreign Exchange rates of Kenyan Shilling against Selected Major Currencies at the end of the Month

Year	2021					2022							
	Aug	Sep	Oct	Nov	Dec	Jan	Feb	Mar	Apr	May	Jun	Jul	Aug
1 US Dollar.....	109.24	110.13	110.86	111.92	112.91	113.38	113.66	114.32	115.40	116.28	117.29	118.32	119.45
1 Pound Sterling...	150.87	151.51	151.58	150.97	150.15	153.59	153.71	151.00	150.11	145.06	144.83	141.85	143.46
1 Euro.....	128.59	129.80	128.60	127.94	127.64	128.42	128.79	126.21	125.51	122.93	124.14	120.72	121.03
100 Japanese Yen	99.47	100.04	98.03	98.12	99.20	98.63	98.69	96.64	91.83	90.29	87.58	86.57	88.51
1 SA Rand.....	7.39	7.57	7.44	7.23	7.10	7.31	7.45	7.94	7.73	7.33	7.44	7.03	7.16
USHS/KES.....	32.39	32.07	32.28	31.74	31.49	31.13	30.92	31.39	30.68	31.24	31.91	32.04	32.08
TSHS/KES.....	21.23	21.04	20.78	20.57	20.40	20.33	20.35	20.27	20.13	20.00	19.87	19.71	19.52

Source: Central Bank of Kenya

Figure 2: End of Month Mean Exchange rate of Kenya Shillings against Major Selected Currencies

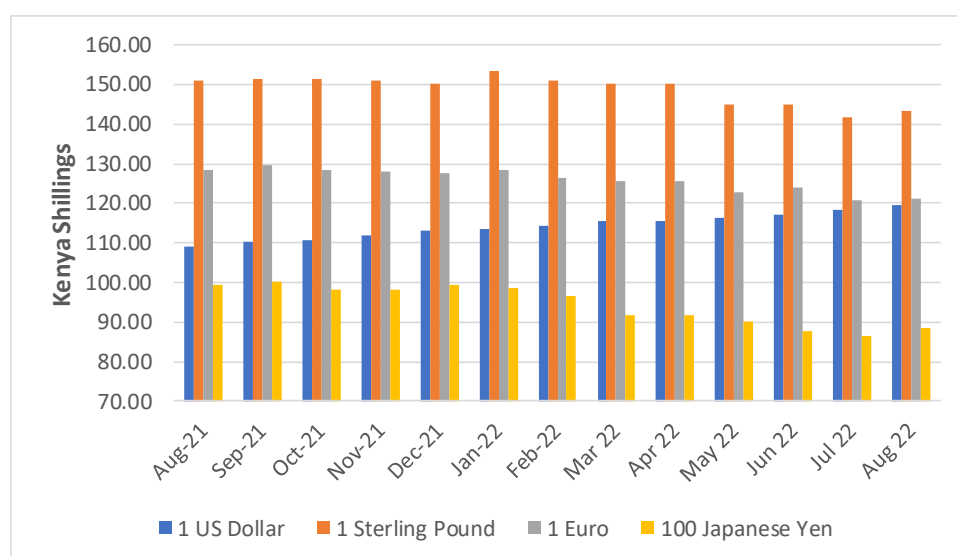


Table 3: Interest rate (%)

Month/Year	Average Yield Rates 91 – Days Treasury	Central Bank Rate	Rates for Commercial Banks Loans and Advances (Weighted Average)	Overdraft Rates	Average Deposit Rate	Inter – Bank Rates	Savings (Commercial Banks Rates)
2021							
January	6.92	7.00	12.00	11.43	6.31	5.12	2.73
February	6.90	7.00	12.02	11.52	6.46	4.49	3.35
March	7.03	7.00	12.05	11.61	6.46	5.23	3.48
April	7.10	7.00	12.08	11.66	6.30	5.12	2.66
May	7.15	7.00	12.06	11.57	6.30	4.62	2.55
June	7.03	7.00	12.02	11.18	6.37	4.63	2.55
July	6.64	7.00	12.09	11.44	6.34	4.17	2.51
August	6.57	7.00	12.12	11.38	6.30	3.10	2.64
September	6.83	7.00	12.10	11.34	6.34	4.73	2.57
October	6.95	7.00	12.12	11.33	6.39	5.30	2.58
November	7.10	7.00	12.15	11.41	6.43	4.97	2.60
December	7.26	7.00	12.16	11.45	6.50	5.02	2.55
2022							
January	7.32	7.00	12.12	11.57	6.53	4.36	2.55
February	7.28	7.00	12.17	11.63	6.61	4.73	2.56
March	7.25	7.00	12.15	11.50	6.50	4.72	2.48
April	7.39	7.00	12.20	11.69	6.58	4.67	2.56
May	7.65	7.50	12.22	11.76	6.59	4.60	2.52
June	7.90	7.50	12.27	11.86	6.62	5.06	2.50
July	8.21	7.50	12.35	12.02	6.74	5.50	2.94
August	8.58	7.50	12.38	11.74	6.93	5.37	3.47

Source; Central Bank of Kenya

Table 4: Nairobi Securities Exchange

	Number of Equity Transactions	Number of Shares (Million)	Value of Shares (Million KSh)	NSE 20 Share Index
2021				
January.....	19,554	294	8,852	1,882
February.....	19,422	331	10,820	1,916
March.....	23,925	373	12,064	1,846
April.....	20,893	293	9,878	1,867
May.....	21,784	386	14,162	1,872
June.....	23,889	421	13,953	1,928
July.....	24,245	285	9,275	1,974
August	27,232	345	11,854	2,021
September.....	27,066	317	10,231	2,031
October.....	21,121	264	10,274	1,961
November.....	27,470	457	15,584	1,871
December.....	21,010	286	10,464	1,903
2022				
January.....	21,097	221	8,248	1,889
February.....	22,010	281	9,972	1,887
March.....	24,778	251	9,641	1,847
April.....	18,452	193	5,851	1,801
May.....	24,302	320	10,778	1,682
June.....	26,345	358	9,608	1,613
July.....	23,195	264	7,999	1,701
August	22,584	208	5,343	1,751

Source: Nairobi Securities Exchange Limited

Base Jan 1966=100

Figure 3: Nairobi Securities Exchange 20 Share Index

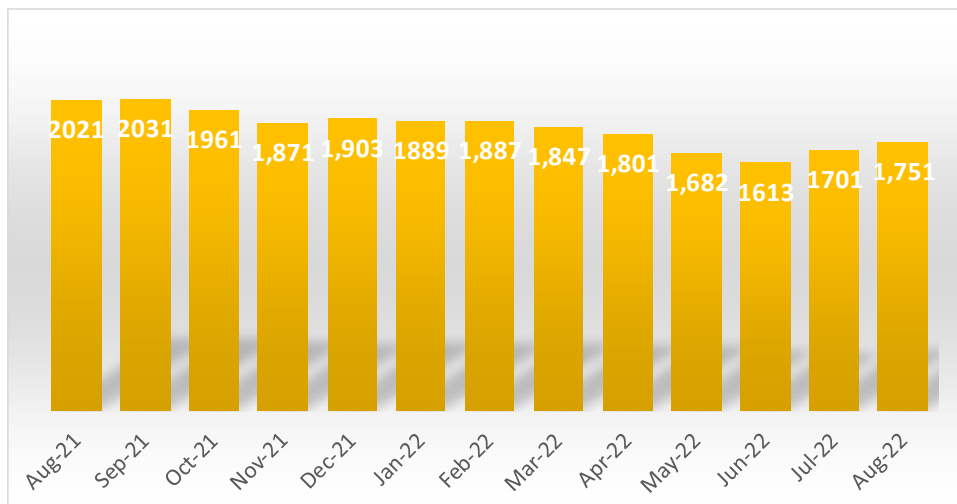


Table 5(a): Money Supply

KSh million						
As at end of month	Money (M1)*	Quasi – Money**	Total (M2)***	Foreign currency deposits	Broad Money (M3)****	% Change ¹
2021						
January	1,716,364	1,520,544	3,236,907	755,977	3,992,885	0.05
February	1,734,582	1,528,872	3,263,455	779,534	4,042,989	1.25
March	1,716,744	1,533,546	3,250,290	779,702	4,029,992	-0.32
April	1,718,771	1,559,275	3,278,045	762,790	4,040,835	0.27
May	1,726,768	1,567,399	3,294,167	745,442	4,039,609	-0.03
June	1,779,227	1,598,250	3,377,477	760,336	4,137,813	2.43
July	1,788,031	1,628,882	3,416,913	757,731	4,174,644	0.89
August	1,821,013	1,641,354	3,462,367	771,070	4,233,437	1.41
September	1,770,791	1,637,347	3,408,138	769,524	4,177,661	-1.32
October	1,827,519	1,609,542	3,437,061	773,851	4,210,912	0.80
November	1,822,003	1,613,301	3,435,304	798,700	4,234,004	0.55
December	1,848,086	1,583,477	3,431,563	803,661	4,235,224	0.03
2022						
January	1,793,436	1,592,596	3,386,032	793,259	4,179,291	-1.32
February	1,832,389	1,584,011	3,416,400	804,313	4,220,713	0.99
March	1,796,329	1,613,834	3,410,163	811,080	4,221,243	0.01
April	1,866,646	1,617,163	3,483,809	834,476	4,318,285	2.30
May	1,860,807	1,623,026	3,483,833	828,499	4,312,331	-0.14
June	1,903,199	1,644,667	3,547,865	891,497	4,439,363	2.95
July	2,010,074	1,577,114	3,587,188	904,262	4,491,450	1.17
August	1,910,393	1,643,536	3,553,929	895,262	4,449,191	-0.94

Source: Central Bank of Kenya

* Currency in circulation less cash in banks plus all demand deposits except those of National & County government, Banks, non-residents and foreign currency deposits

** All other deposits in commercial banks, except those of National government.

***Broad money (M2) is the sum of M1, Quasi money in Banks and net Quasi money in NBFIs..

**** Broad Money (M3) includes M2 and Foreign currency deposits

M2=(M1+QM-NBFIs)

M3=M2+FCD

¹ percentage of M3 from previous month

Table 5(b): Gross Foreign Exchange Reserves

							KSh Million*
Month	Central Monetary Authority		Total	Foreign Assets		Gross Total	Net of Foreign Exchange Liabilities
	Central Bank	National Government**		Commercial Banks	NBFI		
2021							
January	909,624	2,252	911,876	537,245	242	1,449,363	753,438
February	892,240	2,246	894,486	553,047	85	1,447,618	718,473
March	882,726	2,205	884,931	559,497	62	1,444,490	693,232
April	879,858	2,200	882,058	545,891	84	1,428,033	648,885
May	880,715	2,208	882,923	524,380	81	1,407,384	615,406
June	1,098,287	2,205	1,100,491	515,950	67	1,616,509	785,986
July	1,081,471	2,204	1,083,676	493,585	94	1,577,354	753,443
August	1,040,532	2,222	1,042,753	506,518	632	1,549,903	708,318
September	1,100,336	2,211	1,102,546	492,433	418	1,595,397	664,073
October	1,073,932	2,234	1,076,166	509,261	202	1,585,629	633,206
November	1,053,212	2,236	1,055,448	472,090	317	1,527,856	583,588
December	1,071,610	2,247	1,073,857	532,699	398	1,606,954	592,331
2022							
January	1,009,992	2,245	1,012,237	474,732	260	1,487,229	488,037
February	984,530	2,255	986,785	502,091	934	1,489,810	473,611
March	967,104	2,256	969,360	477,939	65	1,447,364	430,356
April	1,043,528	2,206	1,045,734	482,179	90	1,528,002	512,120
May	1,023,686	2,238	1,025,924	458,557	338	1,484,820	471,968
June	997,863	2,223	1,000,087	481,420	580	1,482,086	455,437
July	981,216	2,221	983,437	469,811	124	1,453,372	402,188

Source: Central Bank of Kenya

* Includes encumbered reserves

**National Government includes reserve position in the Fund and deposits with Crown Agents.

Table 6: Coffee Sales and Prices*

Month	2020			2021			2022***		
	QUANTITY (MT)	PRICE (\$) /kg	PRICE (Ksh /kg)	QUANTITY (MT)	PRICE (\$) /kg	PRICE (Ksh /kg)	QUANTITY (MT)	PRICE (\$) /kg	PRICE (Ksh /kg)
January	3,048.63	4.34	438.95	3,824.34	6.34	697.01	5,990.24	6.72	761.62
February	4,409.60	4.24	427.28	5,325.48	6.06	664.49	6,270.87	6.42	729.67
March	4,845.46	4.06	421.92	4,317.75	4.96	544.14	6,645.52	4.99	571.34
April	2,242.47	2.75	294.70	2,196.29	4.04	435.74	1,845.56	4.49	519.02
May**	1,125.04	2.59	276.10	-	-	-	490.61	3.65	424.23
June**	-	-	-	501.79	5.10	550.70	304.09	5.34	627.29
July	1,310.43	3.32	357.53	1,277.97	6.23	674.11	2,111.30	5.61	663.91
August	1,208.67	4.86	525.29	1,479.13	6.26	683.88	4,379.93	5.33	637.10
September	1,912.58	4.47	484.47	1,889.41	6.03	664.37			
October	1,328.52	4.85	526.80	999.10	6.05	670.88			
November	1,318.42	5.20	568.36	3,538.50	6.92	775.27			
December	1,666.58	5.98	660.07	2,815.88	6.98	789.20			
Annual	24,416.40	4.24	452.86	28,165.64	5.91	649.98	28,038.12	5.32	616.77

Source: Coffee Directorate

* Auction Price

NB: MT denotes Metric Tonnes

*** Provisional

** Nairobi Coffee Exchange was in recess in June 2020 and May 2021

Figure 4: Coffee Sales at the Nairobi Coffee Exchange

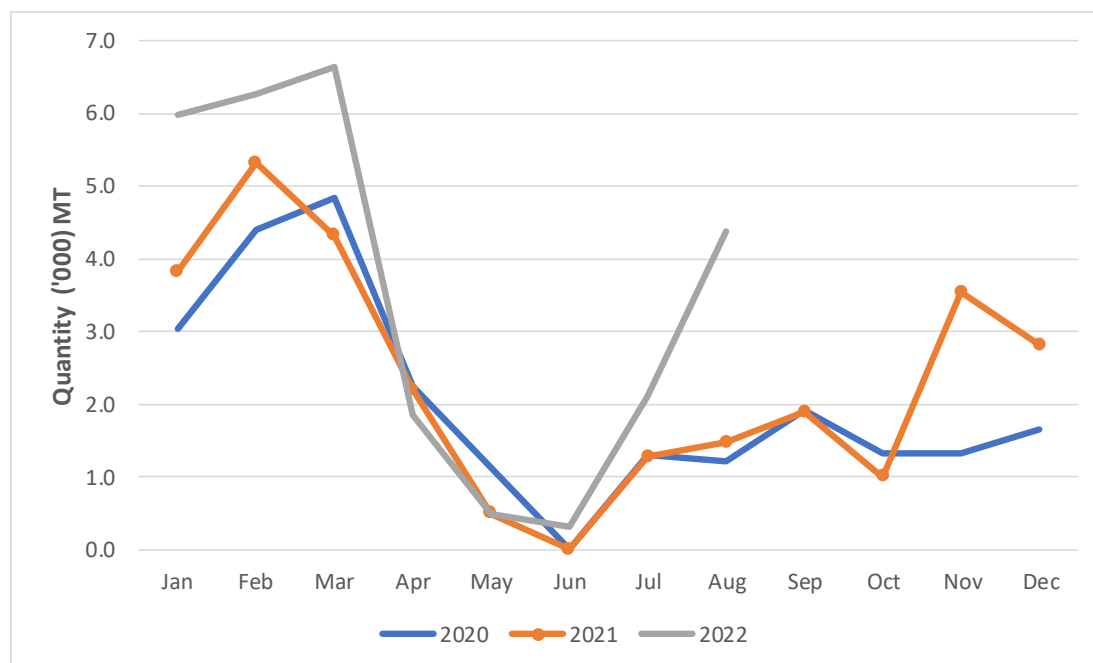


Table 7: Tea Production and Auction Prices

Months	2021			2022*		
	QUANTITY (MT)	PRICE (\$/Kg)	PRICE (KSh/Kg)	QUANTITY (MT)	PRICE (\$/Kg)	PRICE (KSh/Kg)
January	48,896.13	2.03	222.81	48,683.03	2.59	293.55
February	43,398.65	2.10	230.27	40,825.99	2.74	311.37
March	48,692.71	2.00	219.05	46,321.07	2.59	300.71
April	44,299.46	1.90	206.58	41,171.30	2.63	303.65
May	45,321.64	1.91	205.22	50,093.25	2.41	280.23
June	43,468.95	1.82	196.05	43,268.31	2.44	286.30
July	34,732.37	1.75	189.20	33,854.27	2.37	280.37
August	33,635.04	2.10	229.51			
September	43,185.49	2.22	244.02			
October	48,956.89	2.42	267.76			
November	50,719.16	2.48	277.70			
December	52,526.36	2.62	295.87			
Annual	537,832.84	2.11	232.00	304,217.22	2.54	296.03

Source: Tea Directorate

MT denotes Metric Tonnes

*Provisional

Figure 5: Tea Production

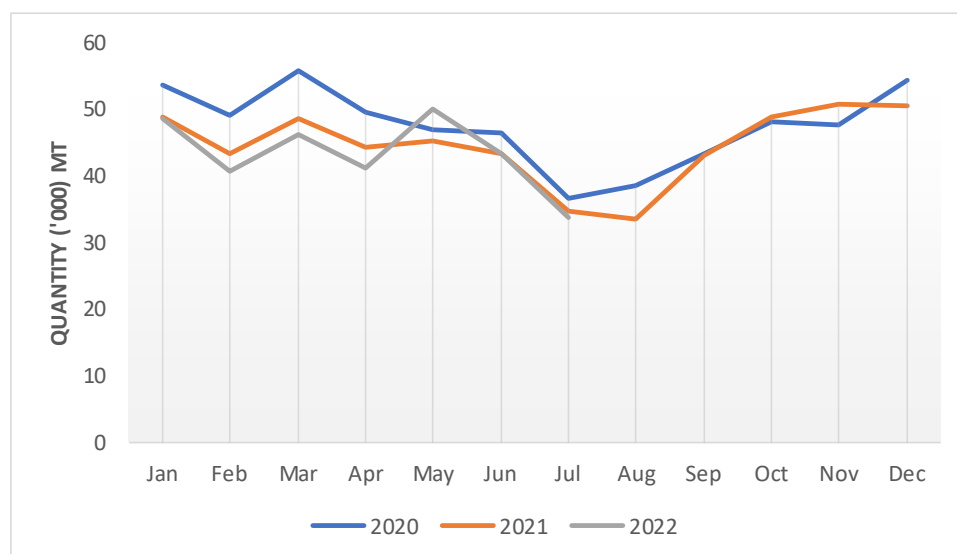


Table 8: Cane Deliveries

Month	000 Metric Tonnes				
	2018	2019	2020	2021	2022
January	687.52	538.67	522.89	681.54	691.11
February	555.88	453.48	529.94	660.44	664.01
March	445.17	456.17	583.14	709.46	825.18
April	324.41	381.71	534.69	631.43	719.48
May	266.43	348.04	544.36	636.46	673.20
June	314.13	259.27	572.37	639.35	763.30
July	378.60	266.97	625.61	636.55	751.84
August	438.73	357.56	629.10	679.56	512.85
September	445.69	397.52	645.31	517.93	
October	492.95	406.53	644.24	551.68	
November	491.96	357.45	594.18	663.71	
December	420.70	381.74	468.59	649.40	
Total	5,262.16	4,605.10	6,894.40	7,657.50	5,600.95

Source : Sugar Directorate

* Provisional

Figure 6: Cane Deliveries

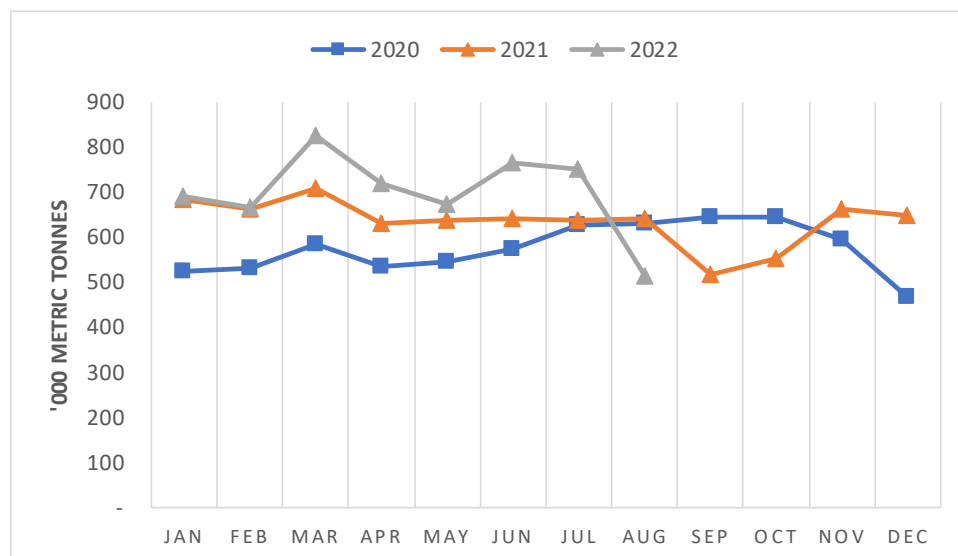


Table 9(a): Average Monthly Retail Prices for Dry Maize, 2021 (per Kg)

Market	January	February	March	April	May	June	July	August	Sep	Oct	Nov	Dec
Kiambu	-	40.0	40.0	42.5	51.3	50.0	50.0	50.0	46.0	40	-	-
Limuru	35.0	40.6	42.5	-	-	40.0	40.0	40.0	48.3	40	-	-
Thika	50.0	47.5	40.8	40.0	46.0	40.0	40.0	40.0	44.0	-	-	-
Githurai	41.0	42.5	42.0	42.5	41.0	47.5	51.0	50.0	48.3	50	50	50.0
Gatundu	43.0	46.3	46.0	46.3	45.0	47.5	50.0	48.8	50.0	40	-	-
Kutus	43.5	41.8	34.3	34.8	34.8	33.7	42.6	28.3	32.6	34.8	34.8	-
Kerugoya	42.0	34.4	34.8	31.3	34.8	37.7	45.7	50.7	41.7	46.3	45.5	-
Ilega	20.0	-	-	-	-	-	-	-	-	-	-	-
Muthithi	35.0	35.3	-	-	-	28.6	30.4	31.0	-	31.3	-	35.0
Makuyu	32.0	34.2	40.7	-	37.7	43.1	36.6	38.7	-	40	-	-
Kiriaini	37.6	33.7	-	-	-	35.7	34.4	33.7	-	34.5	-	-
Engineer	48.2	50.0	48.6	50.0	51.9	50.0	50.0	50.0	47.5	45	-	-
OI Kalou	50.0	50.0	48.3	52.5	50.0	42.5	40.0	40.0	-	-	-	-
Ndaragwa	-	-	-	-	50.0	45.0	-	-	-	-	-	-
Nyeri	40.6	46.5	48.3	48.8	48.1	48.2	47.6	-	-	47.6	42.9	-
Karatina	45.7	48.2	40.9	34.2	38.1	41.5	40.9	-	-	45	44.3	-
Nanyuki	36.3	38.2	39.1	41.0	44.9	44.9	45.7	45.5	49.4	51.9	50.9	50.8
Nyahururu	39.8	40.8	40.4	43.1	43.0	44.1	46.7	46.1	51.5	48.1	43.4	42.9
Ukunda	48.2	-	50.0	47.5	44.0	47.5	45.0	-	-	50	-	-
Kwale	47.9	-	50.0	43.8	42.0	42.5	45.0	-	-	36	-	-
Voi	37.5	36.7	38.8	-	-	-	-	-	-	-	40	40.0
Mpeketoni	40.0	35.0	-	-	-	-	40.0	-	40.0	40	40	-
Mkunguni	51.1	45.0	45.0	45.0	45.0	47.5	55.0	-	65.7	60	60	-
Mwembe Tayari	50.0	55.0	55.0	55.0	56.0	55.0	60.0	-	51.4	60	70	70.0
Majengo	50.0	55.0	52.5	51.3	58.0	58.8	57.5	-	60.0	50	50	55.0
Mackinon	-	-	-	-	-	-	-	-	100.0	84	100	100.0
Kongowea	43.0	43.8	45.0	45.0	40.0	40.0	45.0	-	40.0	41.4	40	40.0
Hola	40.0	40.0	40.0	40.0	40.0	40.0	40.0	-	-	46.7	40	-
Runyenjes	32.4	35.6	36.5	37.1	38.9	38.3	37.1	38.6	43.4	43.8	43.7	42.9
Embu Town	29.0	35.9	37.2	38.6	38.4	37.4	33.3	39.2	43.9	43.4	45	45.0
Iciara	33.4	35.6	37.9	37.2	37.4	37.1	36.0	37.4	42.8	40.7	38.6	42.5
Kiritiri	31.7	39.2	36.6	39.2	38.4	38.6	39.6	45.9	42.9	40.4	34.2	35.7
Siakago	37.9	37.5	39.0	36.3	36.1	35.0	40.0	42.9	42.4	43.7	35.8	34.2
Kalundu	35.0	33.8	35.0	30.0	30.0	32.5	35.0	35.0	35.0	35	35	35.0
Machakos Town	40.0	40.0	40.0	40.0	40.0	40.0	40.0	40.0	40.0	40	-	-
Tala	36.4	35.0	35.0	35.0	35.0	35.0	35.0	35.0	35.0	35	-	-
Maua	37.0	35.0	35.0	-	35.0	35.0	35.0	35.0	37.9	44.4	44.4	44.4
Kianjai	38.4	36.4	33.3	33.3	33.3	33.3	38.9	38.9	37.2	38.9	38.9	38.9
Gakoromere	38.9	35.0	32.2	33.8	35.0	30.0	33.0	32.5	38.9	38.9	-	-
Chuka Town	48.6	45.4	43.4	52.7	43.8	52.6	55.9	52.6	54.1	60.1	-	-
Kathwana	-	-	-	-	-	-	-	-	-	47.4	-	-
Wote	35.0	34.7	32.8	34.3	32.9	35.0	35.0	35.0	35.0	35.6	40	40.0
Garissa Town	70.0	70.0	-	-	70.0	65.0	65.0	65.0	62.1	68.3	-	-
Marsabit Town	59.0	55.8	52.5	50.0	54.0	57.5	53.2	50.0	55.0	-	-	-
Isiolo Town	44.4	60.0	47.5	-	53.3	-	-	35.0	38.8	40	-	-
Daraja Mbili	32.1	29.0	29.8	28.5	32.0	31.3	33.9	34.3	34.1	33.9	36.1	37.1
Riochanda	31.0	28.3	-	-	-	-	-	-	-	-	-	-
Nyabite	31.0	32.6	32.6	32.8	31.8	34.0	31.6	30.1	32.6	33	-	-
Kibuye	34.3	31.4	34.8	34.8	34.8	49.7	39.3	34.8	34.8	34.9	34.8	-
Ahero	34.6	35.3	34.8	34.7	34.9	35.1	34.8	34.9	36.3	35.2	-	-
Kiboswa	34.8	34.1	39.9	32.6	33.0	48.3	34.8	34.8	34.8	33.3	34.8	-
Sondu	34.8	35.3	35.4	34.1	35.0	34.8	35.3	34.8	35.8	34.7	34.8	-
Siaya	40.2	36.9	33.3	-	30.3	35.9	-	-	-	-	-	-
Kegongia	18.2	22.8	24.2	27.5	25.8	26.0	19.2	22.0	26.7	28.2	27.3	-
Oyugis	25.0	23.0	-	27.0	26.0	27.6	29.2	-	-	-	-	-
Kehacha	19.5	25.9	25.2	28.0	27.3	28.0	21.0	24.2	28.5	29.1	28	-
Migori	23.1	26.2	27.5	28.1	28.4	29.3	25.4	25.3	32.6	33.8	32.7	-
Soko Mjinga	33.3	27.6	30.0	35.6	-	32.7	31.3	32.0	29.1	32	-	-
Lodwar	42.6	45.2	90.9	38.5	42.8	40.9	43.2	-	-	48.5	42.6	47.7
Kabarnet	30.0	30.0	30.0	33.8	32.5	35.0	35.0	35.0	35.0	38.3	-	-
Kimulot	33.6	32.2	32.3	36.5	37.1	37.5	37.2	33.3	29.8	29.6	-	-
Sotik	36.0	34.4	32.0	34.5	35.8	35.6	35.4	38.0	30.8	31.1	-	-
Bomet	32.4	36.3	37.5	37.5	37.1	34.6	35.8	35.9	30.7	34.5	35.7	-
Muthurwa Narok	29.6	31.5	-	-	-	-	-	-	-	-	-	-
Nakuru Town	52.5	45.0	45.0	45.0	-	62.5	52.5	48.3	50.0	47.9	-	-
Kapsabet	28.1	28.6	31.8	30.6	32.2	34.2	35.8	36.1	35.8	34	33.3	-
Chepsonoi	28.6	28.3	33.4	29.9	31.5	33.0	35.0	35.7	35.5	34.1	-	-
Engare	28.6	29.1	28.0	-	-	-	-	-	-	-	-	-
Kilgoris	32.2	29.8	25.0	-	-	-	30.0	28.0	29.0	28.8	28.5	28.3
Mulot	32.4	32.9	33.0	34.0	34.0	34.0	34.7	32.0	28.1	28.9	-	-
Kitale	33.8	31.3	44.5	44.3	31.0	31.7	28.8	26.8	-	29.5	26	-
Makutano	26.8	28.2	32.8	-	37.1	40.0	-	-	-	-	-	-
Eldoret	30.0	35.0	35.0	35.0	39.0	40.0	36.0	40.0	40.0	35	-	-
Burn Forest	25.2	27.0	27.0	-	27.0	28.5	-	-	-	28	-	-
Turbo	30.0	30.0	33.1	35.0	34.5	35.0	35.0	37.5	38.5	35	-	-
Kipkaren	30.0	30.0	32.5	34.4	34.0	35.0	35.0	38.8	36.0	35	-	-
Iten	45.0	-	-	-	-	39.4	-	40.0	40.0	40	40	40.0
Kajiado	50.0	49.2	45.0	46.9	48.0	47.5	50.0	50.0	50.0	50	50	48.8
Bungoma Town	29.7	30.6	29.2	32.1	32.9	34.1	33.4	31.2	29.1	30.4	33	33.0
Bumala	71.0	67.0	68.3	65.0	68.8	71.3	84.0	78.0	67.5	76.4	83.8	90.0
Busia Town	68.0	61.0	68.3	70.0	67.5	71.3	81.0	80.0	40.0	35.6	87	90.0
Sio Port	71.0	64.0	65.0	65.0	66.3	72.5	78.0	80.0	37.5	78	70	85.0
Butere	28.8	27.5	27.8	31.1	36.2	33.0	35.0	36.7	28.7	26.8	-	-
Kakamega	29.5	29.2	29.8	32.3	35.5	35.7	34.4	34.7	33.5	31.9	-	-
Mumias	28.3	28.1	28.8	32.4	37.9	34.3	33.4	33.8	32.9	30.9	-	-
Mbale	-	-	-	-	-	-	33.3	-	34.2	36.6	32.1	31.6
Muthurwa	47.6	-	-	-	-	-	-	-	-	-	-	-
Gikomba	47.6	46.5	-	-	-	-	-	-	-	-	-	-
Korokocho	-	-	38.9	-	-	-	-	-	-	-	-	-
Kayole	33.3	-	38.9	-	-	-	-	-	-	-	-	-
Total	37.3	37.4	37.8	37.9	37.9	40.0	39.4	39.0	39.3	40.7	44.4	49.1

Table 9(b): Average Monthly Retail Prices for Dry Maize, 2022 (per Kg)

Market	January	February	March	April	May	June	July	August
Ahero	34.6	35.2	35.3	46.7	50.0	-	-	80.0
Bomet	32.1	35.3	36.6	42.9	49.3	58.0	69.7	-
Bondo	34.8	37.8	-	-	-	-	69.0	65.0
Bumala	51.7	64.2	-	-	-	-	-	68.8
Bungoma Town	41.7	43.5	42.4	48.4	54.6	71.9	71.6	52.5
Burn Forest	37.5	-	-	-	60.0	-	100.0	81.9
Busia Town	34.9	42.0	43.5	51.5	60.4	69.3	77.3	80.8
Butere	35.5	38.5	38.4	44.6	51.0	69.8	67.5	-
Chepsonoi	32.7	37.1	46.0	48.8	47.1	-	-	75.3
Chuka Town	-	56.2	48.1	55.4	-	-	90.8	-
Daraja Mbili	38.2	43.5	45.1	54.3	68.4	87.0	74.6	-
Eldoret	52.0	40.0	-	-	-	-	-	-
Embu Town	42.9	44.3	43.1	43.9	43.9	58.9	99.0	82.8
Engare	40.0	36.4	38.4	38.0	-	-	-	86.6
Engineer	46.0	50.0	50.0	42.5	50.0	50.0	90.0	73.3
Gakoromere	44.4	45.8	44.4	48.6	54.4	94.4	86.7	64.5
Garissa Town	70.0	70.0	62.5	60.0	60.0	67.5	70.0	-
Gatundu	46.0	47.5	40.0	43.8	55.6	90.0	58.0	71.3
Githurai	50.0	50.0	50.0	71.3	63.3	71.3	64.0	-
Iciara	40.6	45.4	43.9	41.5	44.5	47.3	98.6	-
Isiolo Town	-	50.0	40.0	50.0	-	-	100.0	-
Iten	37.8	41.9	45.0	-	60.0	68.8	94.0	-
Kabarnet	36.0	37.5	40.0	42.5	53.0	60.0	81.8	-
Kabati	39.6	43.3	55.0	50.0	-	-	-	-
Kajiado	59.2	62.5	60.0	75.0	70.0	80.0	100.0	97.0
Kakamega	38.8	42.6	42.5	45.0	50.3	64.6	67.5	99.4
Kalundu	39.6	40.0	45.0	46.3	50.0	-	-	88.5
Kapsabet	33.5	38.8	45.2	47.5	45.9	62.7	65.5	99.4
Karatina	47.7	45.9	47.6	46.7	53.4	68.5	86.6	95.8
Kegonga	30.0	28.0	36.0	44.0	44.0	40.0	40.0	-
Kehacha	30.7	28.0	36.0	48.0	48.0	42.7	44.0	-
Kerugoya	54.2	41.9	43.0	52.4	61.9	60.1	80.9	80.0
Kiambu	52.0	50.0	50.0	50.0	63.3	76.7	80.0	-
Kianjai	44.4	41.7	38.9	47.2	51.1	77.8	77.8	77.8
Kibauni Kilifi	45.0	46.3	46.3	52.5	55.0	55.0	-	72.2
Kiboswa	36.0	39.8	42.3	38.8	-	-	-	79.2
Kibuye	35.3	35.3	40.5	52.2	65.2	-	-	93.4
Kimulot	34.8	33.5	35.3	43.8	50.7	63.4	71.0	70.0
Kipkaren	35.0	35.0	-	-	-	58.3	-	-
Kiraini	36.4	41.6	-	39.0	-	-	-	-
Kiritiri	35.3	39.3	43.7	43.9	45.0	61.1	99.0	66.6
Kitale	36.8	39.8	39.2	48.8	51.9	65.6	76.4	-
Kongowea	57.0	50.0	50.0	50.0	60.0	72.5	-	-
Kutus	36.4	40.9	46.5	44.0	53.9	65.2	82.3	-
Limuru	50.0	50.0	50.0	44.4	50.0	90.0	90.0	-
Lodwar	60.0	51.8	54.1	56.4	58.8	89.7	107.2	-
Machakos Town	50.0	50.0	50.0	50.0	60.0	84.0	85.0	66.8
Mackinon	106.0	108.8	80.0	120.0	106.0	100.0	-	74.6
Majengo	50.0	83.3	100.0	105.0	124.0	135.0	-	72.1
Makuyu	42.9	44.3	45.0	51.0	55.8	80.3	80.8	40.0
Maua	45.6	45.8	43.1	48.6	64.8	100.0	91.1	-
Mbale	38.8	40.7	43.0	48.4	56.1	-	79.9	44.0
Migori	32.4	32.0	40.0	52.0	52.0	56.0	49.6	52.0
Mkunguni	60.0	60.0	-	-	-	-	-	57.4
Mpeketoni	45.0	-	-	-	-	-	-	113.6
Mulot	32.6	35.3	36.6	41.1	49.3	63.6	64.3	72.5
Mumias	33.5	36.2	38.3	44.7	53.6	69.8	61.1	58.7
Muthithi	38.4	37.1	-	-	68.9	-	-	61.5
Muthurwa Narok	40.0	39.0	40.0	-	-	-	-	65.4
Mwembe Tayari	70.0	67.5	60.0	67.5	76.0	80.0	-	-
Nakuru Town	40.0	45.0	-	-	50.0	60.0	54.0	45.0
Nanyuki	52.1	53.9	55.6	56.4	65.7	78.1	78.0	-
Nyabite	40.4	-	-	-	56.5	-	73.9	-
Nyahururu	52.3	38.8	35.0	42.5	48.5	70.0	66.7	-
Nyeri	48.6	48.8	35.2	49.7	56.8	67.6	76.7	48.2
Ol Kalou	40.0	40.0	50.3	50.0	59.0	60.0	93.0	66.7
Oyugis	-	-	-	-	63.0	-	-	-
Runyenjes	39.9	44.1	43.4	43.1	43.7	62.0	100.0	-
Siakago	35.5	36.6	43.9	43.9	45.6	73.3	97.6	-
Siaya	38.6	46.8	59.3	-	-	-	68.3	-
Soko Mjinga	-	-	40.0	51.0	-	70.3	60.0	85.0
Sondu	35.3	34.8	36.8	37.0	34.8	-	-	100.0
Sotik	33.9	34.8	36.6	43.8	52.9	65.3	59.7	59.3
Tala	50.0	40.0	40.0	-	45.0	-	-	-
Thika	42.5	41.3	45.0	48.8	52.0	61.5	67.5	-
Turbo	35.0	35.0	-	-	-	-	-	56.9
Unguja	36.8	37.3	-	-	-	-	74.9	59.4
Voi	45.5	46.3	45.0	46.3	52.5	64.4	74.5	50.0
Wote	40.0	45.0	50.0	50.0	56.0	75.0	74.0	81.3
Total	43.9	44.9	46.0	50.8	57.1	69.5	77.5	72.6

Table 9(C): Average Monthly Retail Prices for Dry Beans, 2021 (per Kg)

Market	January	February	March	April	May	June	July	August	Sep	Oct	Nov	Dec
Kiambu	-	107.8	106.7	107.5	100.0	100.8	111.7	104.1	108.0	106.7	-	-
Limuru	102.0	96.3	97.5	-	-	105.0	105.0	100.0	88.3	95.0	-	-
Thika	107.7	96.9	96.7	96.7	101.0	96.7	97.3	100.8	105.1	-	-	-
Githurai	103.0	90.6	100.0	101.3	98.0	99.0	103.3	102.2	100.0	100.6	99.2	100.0
Gatundu	93.3	92.5	93.3	94.2	93.3	93.3	93.4	100.7	98.3	93.3	-	-
Kutus	78.5	75.4	77.8	83.3	83.3	76.0	75.0	56.3	60.4	53.3	50.0	-
Kerugoya	88.6	66.3	74.7	81.8	81.8	74.9	90.0	78.9	69.9	67.3	68.1	-
Muthithi	89.7	77.8	-	-	-	-	79.1	66.6	-	74.7	-	-
Makuyu	83.9	81.3	42.2	-	95.1	71.1	86.7	88.1	-	87.0	-	-
Kiriaini	90.5	91.1	-	-	-	87.0	83.8	67.3	-	76.6	-	-
Engineer	108.3	116.2	108.6	107.4	110.8	104.6	100.0	100.0	107.1	112.0	-	-
Oi Kalou	113.3	101.7	102.2	110.0	111.7	117.5	110.0	106.7	-	-	-	-
Ndaragwa	-	-	-	-	100.0	120.0	-	-	-	-	-	-
Nyeri	101.4	108.2	112.0	108.8	104.2	112.4	113.8	-	-	101.7	115.0	-
Karatina	125.4	119.2	108.3	100.4	104.0	107.3	109.6	-	-	86.7	101.5	-
Nanyuki	105.7	108.3	110.6	114.1	119.1	122.5	123.1	121.2	120.7	123.7	127.6	127.0
Nyahururu	109.5	113.8	115.0	117.2	112.0	117.9	117.1	111.4	108.2	116.0	104.6	104.8
Ukunda	100.0	-	100.0	85.0	80.0	78.8	80.0	-	-	130.0	-	-
Kwale	106.7	-	100.0	85.0	80.0	80.0	80.0	-	-	-	-	-
Voi	110.0	110.0	110.0	-	-	-	-	-	-	-	110.0	88.9
Mpeketoni	101.7	100.0	-	-	-	-	100.0	-	100.0	100.0	100.0	-
Mkunguni	115.3	112.0	108.8	110.0	110.0	107.5	115.0	-	120.0	120.0	120.0	-
Mwembe Tayari	122.0	120.0	120.0	120.0	128.0	130.0	130.0	-	93.3	134.0	130.0	150.0
Majengo	124.0	105.0	110.0	130.0	108.0	115.0	120.0	-	100.0	120.0	120.0	120.0
Mackinon	120.0	101.7	100.0	110.0	114.7	120.0	120.0	120.0	125.7	136.0	128.0	140.0
Sega	126.0	110.0	120.0	127.5	118.0	120.0	120.0	-	117.5	120.0	120.0	125.0
Kongowea	94.0	97.5	100.0	100.0	108.0	110.0	110.0	-	90.0	93.6	90.0	90.0
Hola	120.0	120.0	120.0	120.0	120.0	120.0	120.0	120.0	120.0	120.0	120.0	-
Garsen	100.0	100.0	100.0	100.0	100.0	100.0	100.0	100.0	100.0	100.0	100.0	-
Runyenges	88.7	89.7	94.0	97.6	93.2	97.7	102.0	95.2	97.0	96.2	96.4	71.4
Embu Town	99.3	88.1	86.8	95.1	96.2	101.2	92.4	105.0	103.6	99.4	89.1	92.5
Iciara	96.7	89.3	90.4	90.2	93.1	106.6	95.2	98.8	121.3	97.9	98.9	97.5
Kiritiri	91.9	81.4	97.6	88.7	90.5	92.6	92.4	106.0	114.3	96.4	97.6	95.2
Siakago	93.5	80.2	84.9	90.3	91.5	85.7	89.5	106.0	116.7	94.9	92.4	95.2
Kalundu	108.3	110.8	112.0	110.0	110.0	90.0	90.0	101.3	110.0	106.1	101.5	95.0
Machakos Town	106.7	110.0	100.0	100.0	110.0	110.0	108.0	100.0	100.0	100.0	-	-
Tala	110.0	100.0	100.0	100.0	100.0	100.0	94.0	80.0	80.0	81.3	-	-
Maua	80.0	80.0	80.0	-	90.0	90.0	88.0	80.0	91.7	100.0	92.6	100.0
Kianjai	80.0	81.9	92.6	100.0	100.0	100.0	88.9	88.9	88.9	88.9	88.9	88.9
Gakoromere	90.0	90.0	92.5	92.5	96.0	85.0	84.0	90.0	100.0	84.4	-	-
Chuka Town	-	111.1	158.3	125.0	111.1	125.0	111.1	111.1	110.4	122.2	-	-
Kathwana	-	-	-	-	-	-	-	-	-	60.0	-	-
Wote	100.0	100.0	100.0	100.0	97.5	109.2	100.0	91.4	90.0	103.8	110.0	100.0
Garissa Town	106.7	106.7	-	-	106.7	106.7	106.7	106.7	106.7	106.7	-	-
Marsabit Town	106.0	103.3	115.0	112.5	110.0	120.0	120.0	115.0	120.0	-	-	-
Isiolo Town	91.1	100.0	93.8	-	66.7	-	-	95.0	100.0	100.0	-	-
Daraja Mbilli	104.7	102.9	107.4	108.7	100.0	103.3	93.8	90.9	103.1	96.3	107.1	102.2
Riochanda	88.4	100.0	-	-	-	-	-	-	-	-	-	-
Nyabite	102.2	115.2	120.0	133.7	114.3	105.8	94.2	102.9	104.2	132.5	-	-
Kibuye	111.3	114.6	110.9	109.4	110.0	129.8	116.8	111.5	111.7	107.8	108.3	-
Ahero	108.8	116.4	108.3	106.9	111.0	109.2	109.7	110.7	108.1	105.7	-	-
Kiboswa	108.3	114.1	105.3	104.2	105.7	143.5	109.5	109.4	109.4	102.4	-	-
Sondu	104.9	114.3	104.1	105.7	107.2	110.7	108.7	110.4	107.2	107.5	-	-
Siaya	78.3	98.2	96.3	-	89.6	86.5	-	-	-	-	-	-
Kegonga	95.2	105.3	106.8	106.2	105.0	94.6	82.3	87.3	92.4	97.4	103.0	-
Oyugis	109.0	100.1	-	110.0	108.1	105.3	107.7	-	-	-	-	-
Kehacha	93.0	104.4	107.6	108.6	111.0	97.2	86.1	85.7	93.6	99.2	104.7	-
Migori	124.9	104.0	120.5	117.6	111.4	106.5	99.1	97.8	107.6	109.1	108.7	-
Soko Mjinga	91.5	84.1	95.8	92.6	-	107.0	108.3	108.1	88.7	86.6	-	-
Lodwar	96.6	100.0	125.0	83.3	83.6	87.5	101.8	-	-	81.0	87.5	83.3
Kabarnet	109.4	113.3	100.0	115.0	120.0	101.4	100.0	120.0	100.0	99.1	-	-
Kimulot	96.0	86.7	87.7	93.9	89.3	73.7	74.3	72.7	75.2	77.5	-	-
Sotik	95.1	94.4	97.5	82.8	90.8	87.1	83.7	69.6	66.7	75.8	-	-
Bomet	86.2	89.8	107.9	94.4	92.8	100.2	96.2	62.2	93.0	107.0	105.6	-
Muthurwa Narok	112.0	98.7	-	-	-	-	-	-	-	-	-	-
Nakuru Town	60.0	60.0	60.0	60.0	-	60.0	70.0	103.3	93.3	88.9	-	-
Kapsabet	114.4	119.0	120.2	115.1	113.8	106.4	100.8	100.5	109.1	95.2	100.0	-
Chepsonoi	117.0	121.8	114.9	110.5	106.8	106.7	106.5	109.8	115.1	100.0	88.9	-
Engare	75.5	85.0	95.8	-	-	-	-	-	-	-	-	-
Kilgoris	58.7	60.0	60.0	-	-	-	89.1	94.0	96.6	84.9	76.0	75.4
Mulot	74.6	81.2	78.2	70.6	73.9	70.5	72.2	66.7	71.7	75.9	-	-
Kitale	104.3	115.6	107.0	93.9	106.7	93.2	99.3	73.8	-	81.0	104.2	-
Makutano	88.8	148.0	127.7	-	96.3	80.0	-	-	-	-	-	-
Eldoret	138.0	138.8	135.0	138.8	139.0	140.0	139.0	131.3	134.0	130.0	-	-
Burn Forest	132.7	134.1	134.1	-	134.1	136.4	-	-	-	113.6	-	-
Turbo	135.0	133.8	132.5	127.5	135.0	137.5	129.0	126.3	127.0	125.0	-	-
Kipkaren	138.0	135.0	132.5	138.8	135.0	136.3	134.0	131.3	127.0	125.0	-	-
Iten	90.0	-	-	-	-	118.8	-	110.0	110.0	110.0	110.0	90.0
Kajiado	105.2	109.5	109.4	107.1	109.8	113.3	114.7	116.6	113.3	114.8	115.3	117.3
Bungoma Town	98.5	91.5	92.0	92.1	88.7	83.4	78.5	82.2	78.1	89.4	83.4	75.0
Bumala	140.0	124.0	131.7	140.0	137.5	127.5	120.0	150.0	150.0	150.0	-	-
Busia Town	132.0	142.0	131.7	125.0	127.5	142.5	120.0	120.0	130.0	115.2	-	-
Sio Port	130.0	134.0	130.0	130.0	125.0	122.5	98.0	106.0	122.5	122.5	122.5	-
Butere	105.1	110.2	121.4	123.1	127.9	109.9	110.7	110.0	117.3	118.4	-	-
Kakamega	95.3	103.9	121.9	125.0	128.2	126.7	104.2	107.0	107.6	112.0	-	-
Mumias	116.3	112.5	114.7	130.9	133.8	119.1	117.3	110.1	104.9	106.4	-	-
Mbale	-	-	-	-	-	-	136.4	-	139.8	143.2	147.5	136.4
Muthurwa	104.3	-	-	-	-	-	-	-	-	-	-	-
Gikomba	104.3	104.3	-	-	-	-	-	-	-	-	-	-
Korokocho	-	-	70.0	-	-	-	-	-	-	-	-	-
Kayole	72.7	-	66.7	-	-	-	-	-	-	-	-	-
Total	100.5	101.1	102.5	102.0	102.5	101.3	100.5	99.6	104.3	102.6	103.4	102.4

Table 9(d): Average Monthly Retail Prices for Dry Beans, 2022 (per Kg)

Market	January	February	March	April	May	June	July	August
Ahero	103.6	104.2	106.5	112.2	112.2	-	-	140.0
Bomet	77.9	82.2	102.4	100.0	112.3	114.0	121.5	-
Bondo	117.4	123.4	-	-	-	-	147.7	108.8
Bumala	135.0	108.7	-	-	-	-	-	129.2
Bungoma Town	93.9	81.5	93.2	98.9	116.7	114.1	129.0	137.5
Burn Forest	127.3	-	-	-	120.0	-	120.5	97.9
Busia Town	114.9	102.5	113.6	126.5	122.9	125.0	140.0	111.3
Butere	118.1	109.3	110.7	108.3	107.5	108.6	140.9	-
Chepsonoi	104.3	107.1	108.8	109.4	108.9	-	-	99.0
Chuka Town	-	112.7	98.2	98.6	-	-	158.7	-
Daraja Mbili	106.6	100.9	102.7	121.8	114.2	116.3	124.1	-
Eldoret	100.0	97.5	-	-	-	-	-	-
Embu Town	87.7	90.6	100.7	99.5	103.0	101.9	126.5	108.2
Engare	73.4	66.1	60.4	76.0	-	-	-	129.1
Engineer	113.3	100.0	100.0	113.3	100.0	100.0	108.0	113.3
Gakoromere	90.0	90.0	85.0	85.0	115.1	150.0	137.8	93.3
Garissa Town	106.7	101.7	106.7	106.7	106.7	106.7	106.7	-
Gatundu	64.3	67.9	67.3	65.2	77.2	120.0	140.0	143.3
Githurai	103.3	103.3	114.0	122.7	117.8	122.5	124.0	-
Iciara	89.4	95.8	101.9	111.2	119.4	124.5	139.2	-
Isiolo Town	-	80.0	87.5	100.0	-	-	80.0	-
Iten	100.0	100.0	99.4	-	122.5	130.0	145.0	-
Kabarnet	105.6	100.0	102.8	113.9	125.3	137.5	128.0	-
Kabati	93.5	100.0	110.0	-	-	-	-	-
Kajiado	116.7	111.7	119.2	123.3	113.3	120.0	133.3	-
Kakamega	124.2	107.0	108.7	109.9	129.0	160.0	159.1	109.1
Kalundu	93.5	105.0	108.6	110.0	110.0	-	-	119.6
Kapsabet	107.6	106.7	107.2	101.1	113.1	118.4	114.7	139.9
Karatina	105.9	104.6	106.9	107.3	113.3	119.2	134.8	145.8
Kegonga	104.5	109.1	113.6	115.2	90.9	104.5	98.5	126.5
Kehacha	109.1	109.1	107.4	107.4	101.6	97.4	97.3	-
Kerugoya	70.8	70.4	70.8	81.8	88.1	96.2	99.0	-
Kiambu	101.5	105.0	114.0	114.0	123.7	132.5	135.3	145.0
Kianjai	84.4	77.8	71.9	90.0	104.4	133.3	133.3	-
Kibauni Kilifi	100.0	102.5	102.5	110.0	110.0	110.0	-	133.3
Kiboswa	106.2	109.4	109.4	103.5	-	-	-	133.3
Kibuye	106.8	104.2	104.7	106.8	108.3	-	-	133.3
Kimulot	76.3	77.2	84.3	87.3	95.6	104.1	115.2	145.4
Kipkaren	98.0	97.5	-	-	-	119.3	-	140.0
Kiriaini	73.4	71.1	-	72.4	-	-	-	-
Kiritiri	90.6	100.7	100.1	96.7	91.0	116.2	134.8	-
Kitale	74.7	104.4	93.8	98.9	75.7	125.3	122.8	-
Kongowea	100.0	100.0	100.0	105.0	110.0	120.0	-	124.4
Kutus	66.1	71.7	78.7	71.6	80.6	95.6	101.6	-
Limuru	95.0	92.1	90.6	94.2	95.0	95.0	95.0	-
Lodwar	106.7	90.9	117.1	119.1	109.0	135.4	117.3	-
Machakos Town	116.0	117.5	117.1	110.0	123.3	129.5	137.5	-
Mackinon	140.0	140.0	150.0	150.0	150.0	150.0	-	-
Majengo	120.0	120.0	120.0	120.0	128.0	120.0	-	134.3
Makuyu	82.2	64.6	76.3	97.9	94.5	99.5	98.0	166.9
Marsabit Town	26.7	-	-	-	-	-	-	158.4
Maua	95.6	88.9	88.9	105.6	115.6	133.3	133.3	100.0
Mbale	144.7	137.2	164.5	152.8	173.5	-	175.0	-
Migori	107.2	105.8	110.6	121.7	109.9	108.7	104.3	98.5
Mkunguni	120.0	120.0	-	-	-	-	-	108.7
Mpeketoni	100.0	-	-	-	-	-	-	123.7
Mulot	74.9	76.9	80.0	92.5	106.3	112.9	115.8	104.2
Mumias	122.3	109.9	107.8	106.4	114.5	116.3	113.3	118.6
Muthithi	82.2	66.3	-	-	93.7	-	-	113.9
Muthurwa Narok	79.0	44.8	44.0	-	-	-	-	122.4
Mwembe Tayari	146.7	140.0	130.0	140.0	150.0	160.0	-	123.1
Nakuru Town	97.3	72.2	-	-	73.3	69.2	67.1	-
Nanyuki	129.2	136.5	135.6	127.8	113.0	105.0	106.3	78.9
Nyabite	92.4	-	-	-	136.4	-	136.4	-
Nyahururu	108.5	87.8	80.0	100.0	90.5	100.0	108.0	-
Nyeri	109.6	71.1	46.6	92.7	97.9	85.4	107.2	-
Oi Kalou	106.7	106.7	114.0	111.4	113.3	113.3	118.7	106.4
Oyugis	-	-	-	-	95.6	-	-	102.1
Runyenjes	90.5	93.4	101.3	107.4	106.4	112.1	131.1	-
Sega	122.0	122.5	120.0	122.5	130.0	135.0	-	-
Siakago	95.3	102.5	101.9	102.5	104.9	108.1	125.0	-
Siaya	135.5	134.4	157.2	-	-	-	159.1	-
Soko Mjinga	-	-	103.0	100.1	-	115.6	121.2	153.1
Sondu	104.2	104.7	102.2	104.6	107.9	-	-	140.8
Sotik	76.2	82.1	86.8	88.9	99.3	117.3	119.0	135.4
Tala	120.0	80.0	100.0	-	100.0	-	-	-
Thika	92.0	105.0	101.0	102.5	106.0	91.0	103.1	-
Turbo	100.0	100.0	-	-	-	-	-	134.4
Unguja	130.4	136.8	-	-	-	-	150.6	142.9
Voi	97.0	97.5	105.6	110.0	122.0	121.3	132.7	113.8
Wote	100.0	100.0	130.0	140.0	124.0	120.0	124.0	171.0
Total	100.6	96.9	100.1	105.9	108.4	114.0	122.3	127.6

Table 10: Exports of Coffee and Tea

Month	COFFEE *		TEA	
	Quantity (MT)	Value '(KSh. Million)	Quantity (MT)	Value '(KSh. Million)
2021				
January.....	2,129.36	1,342.45	48,811.79	11,378.64
February.....	3,481.13	2,161.12	50,389.92	11,725.86
March.....	6,065.07	4,556.94	53,432.10	12,672.90
April.....	3,337.01	2,307.12	51,899.23	11,575.75
May.....	4,430.33	3,010.49	50,041.59	11,070.79
June.....	3,436.88	2,271.77	43,993.25	9,547.74
July.....	2,696.29	1,763.90	43,844.48	9,203.50
August.....	2,504.38	1,657.82	44,421.07	9,874.40
September.....	2,480.29	1,735.13	36,307.66	8,565.59
October.....	2,432.20	1,674.37	40,078.09	10,316.47
November.....	2,170.19	1,740.12	45,318.19	12,180.56
December.....	2,314.35	1,918.64	47,922.07	12,724.88
2022				
January.....	3,238.60	2,633.51	45,584.65	12,628.76
February.....	4,617.63	3,546.19	44,093.16	13,303.40
March.....	4,066.91	3,415.52	46,043.56	13,558.64
April.....	5,749.32	4,467.98	43,446.02	12,769.02
May.....	5,902.59	4,876.67	47,380.14	13,776.91
June.....	4,945.48	3,818.23	46,794.67	13,693.39
July.....	5,179.34	3,824.46	45,583.93	13,464.54
August.....	3,212.76	2,482.09	42,940.45	12,603.59

Source: KRA Customs and Border Control Services department

* Coffee, not Roasted

MT denotes Metric tonnes

Table 11: Monthly Exports of Fresh Horticultural Produce

Months	Cut Flowers				FRUITS				VEGETABLES			
	2021		2022*		2021		2022*		2021		2022*	
	Quantity (MT)	Value (KSh Million)	Quantity (MT)	Value (KSh Million)	Quantity (MT)	Value (KSh Million)	Quantity (MT)	Value (KSh Million)	Quantity (MT)	Value (KSh Million)	Quantity (MT)	Value (KSh Million)
January	15,169.04	10,767.58	11,360.35	6,497.70	7,071.82	1,038.19	5,631.10	762.10	6,066.26	3,430.90	2,355.98	867.14
February	17,411.90	11,947.44	721,998.61	8,542.67	11,738.47	1,697.31	2,083.84	291.81	5,363.26	2,222.24	2,687.27	228.12
March	17,589.01	9,420.27	1,421,655.80	6,765.72	19,399.89	2,893.90	7,495.87	954.80	7,053.12	2,697.68	6,746.42	1,109.34
April	16,473.23	8,525.04	10,297.15	5,494.73	19,046.36	2,719.63	8,372.43	1,119.08	6,177.43	2,253.52	5,199.03	1,062.32
May	13,545.31	7,066.07	715,547.18	5,469.26	13,433.19	1,927.87	9,584.90	1,162.11	6,694.81	2,472.27	4,411.57	1,121.20
June	12,786.28	5,475.70	8,801.29	4,586.40	11,415.49	1,804.96	10,905.97	1,343.36	8,942.62	2,447.22	5,016.12	1,038.09
July	9,687.18	4,603.25	8,425.50	4,386.34	5,116.90	919.67	14,352.89	1,758.37	3,522.29	1,297.88	3,386.96	1,294.81
August	19,842.63	9,810.21	6,511.39	2,958.44	8,742.79	1,614.25	10,140.63	1,521.69	7,206.65	2,664.92	5,959.74	1,289.40
September	21,584.94	10,448.80			6,260.50	1,346.72			7,956.41	2,601.13		
October	24,382.26	12,785.51			5,105.03	745.01			8,435.29	2,608.88		
Nov	23,410.82	10,234.87			3,157.16	870.38			4,001.60	2,085.64		
Dec	18,253.30	9,764.52			6,834.19	805.01			6,643.50	1,678.40		
Total	210,135.89	110,849.27	2,904,597.26	44,701.25	117,321.80	18,382.91	68,567.63	8,913.32	78,063.23	28,460.70	35,763.09	8,010.42

Source: Horticultural Directorate

* Provisional

Table 12: External Trade

	KSh Million					
Month	Domestic Exports	Re-Exports	Total Exports	Total Imports	Volume of Trade	Home use Imports
2021						
January.....	49,570.48	4,743.15	54,313.63	160,723.93	215,037.56	152,098.04
February.....	58,701.48	8,790.05	67,491.53	159,547.18	227,038.71	153,277.19
March.....	60,215.79	8,029.39	68,245.19	187,095.06	255,340.25	183,373.06
April.....	53,375.93	5,485.80	58,861.73	161,847.41	220,709.13	154,720.58
May.....	56,910.62	6,226.85	63,137.47	162,198.06	225,335.53	155,023.58
June.....	52,304.35	4,439.83	56,744.17	160,159.92	216,904.09	155,621.22
July.....	54,893.95	4,517.02	59,410.97	177,168.59	236,579.56	164,803.20
August.....	55,275.67	6,066.94	61,342.61	172,950.46	234,293.07	167,065.44
September.....	48,736.77	5,215.73	53,952.51	190,322.95	244,275.46	181,021.80
October.....	58,249.68	6,659.71	64,909.39	187,863.17	252,772.57	180,500.89
November.....	55,358.70	8,847.26	64,205.96	191,812.82	256,018.78	186,968.16
December.....	57,756.21	8,594.46	66,350.67	235,233.24	301,583.91	222,886.14
2022*						
January.....	54,009.04	6,399.25	60,408.28	194,272.63	254,680.91	154,755.62
February.....	61,223.10	9,069.16	70,292.26	183,812.64	254,104.91	142,470.37
March.....	67,475.99	9,587.27	77,063.26	213,516.62	290,579.88	160,416.27
April.....	62,535.51	6,424.16	68,959.68	195,283.44	264,243.12	136,829.02
May.....	70,735.12	6,695.87	77,430.99	233,438.35	310,869.34	158,583.65
June.....	68,569.27	11,297.15	79,866.43	227,714.31	307,580.74	162,439.10
July.....	68,021.79	7,503.79	75,525.58	212,990.78	288,516.37	143,962.40
August.....	62,064.56	10,854.66	72,919.21	239,480.94	312,400.15	155,805.43

Source: Kenya Revenue Authority

*Provisional

Table 13(a): Major Destinations of Domestic Exports

KSh Million											
Month/Country	Uganda	Tanzania	United Kingdom	Pakistan	Netherlands	Egypt	Germany	Rwanda	USA	United Arab Emirates	France
2021											
January.....	4,057.47	2,274.20	4,584.99	4,550.15	5,444.13	1,604.35	1,250.79	1,465.90	4,985.78	2,216.37	727.29
February.....	6,870.27	2,431.41	5,033.00	4,598.23	5,850.86	2,353.14	1,880.30	1,722.03	3,849.57	2,593.93	819.88
March.....	5,686.64	2,612.97	5,097.76	4,722.82	5,535.02	2,460.03	2,303.29	1,847.51	4,563.14	2,090.72	1,127.14
April.....	6,554.92	2,758.96	3,077.24	3,585.95	4,505.80	1,672.16	795.07	1,958.34	3,480.22	1,422.81	647.37
May.....	6,035.04	2,367.05	4,224.31	4,391.38	5,389.51	1,825.95	922.85	2,076.59	4,487.26	1,512.78	901.54
June.....	7,066.70	2,846.37	4,298.39	3,791.40	4,364.61	1,214.03	874.15	2,334.52	5,226.85	1,529.66	1,057.13
July.....	6,308.38	3,752.88	3,872.87	4,033.58	4,049.64	1,109.89	913.20	2,515.98	6,989.67	1,643.04	807.14
August.....	6,986.13	3,104.14	3,402.84	4,092.64	3,830.14	1,791.96	1,111.15	2,543.91	4,801.14	1,935.71	953.08
September.....	3,636.25	4,846.18	3,353.35	2,977.96	3,868.66	1,467.78	1,018.42	1,674.44	4,941.51	1,834.99	800.85
October.....	6,764.65	5,873.82	4,104.44	4,452.84	4,403.60	1,485.34	918.70	2,841.97	4,674.26	1,891.27	657.77
November.....	5,909.20	3,933.45	4,175.13	5,984.68	4,933.53	1,838.46	1,119.31	1,873.13	5,212.70	2,181.19	569.51
December.....	5,534.75	3,727.75	3,755.62	5,720.84	4,045.10	2,212.38	1,039.81	2,716.77	4,755.02	2,556.81	576.97
2022*											
January.....	3,937.02	2,764.90	4,160.42	5,530.12	5,301.79	2,063.07	1,460.30	1,287.16	4,537.60	1,919.19	748.55
February.....	6,067.02	3,615.70	4,465.74	5,897.96	5,169.95	2,463.93	1,228.90	1,561.99	4,669.31	1,735.39	682.22
March.....	6,679.73	3,778.04	4,276.34	5,430.52	5,355.45	2,861.63	1,533.49	3,089.29	5,570.82	1,957.71	759.64
April.....	4,537.67	3,486.06	3,349.84	5,093.79	5,117.18	2,088.33	1,621.17	2,811.17	7,188.41	2,202.34	870.79
May.....	8,226.26	4,132.47	3,962.74	4,643.76	4,966.79	2,340.98	1,286.91	3,473.70	6,732.11	2,694.23	897.27
June.....	6,739.82	4,587.69	3,442.93	4,677.20	3,768.03	2,609.49	1,183.03	2,923.78	10,147.54	2,296.68	798.85
July.....	8,522.12	4,138.55	3,723.40	4,225.18	3,592.68	2,523.96	1,437.56	4,341.75	7,132.23	2,634.55	1,108.43
August.....	5,949.21	4,639.23	3,342.19	4,973.45	3,303.03	1,779.64	1,253.12	3,397.59	6,271.10	2,648.28	986.38

Source: Kenya Revenue Authority

*Provisional

Table 13(b): Domestic Exports by Broad Economic Category

Descriptions	Value in KSh Million												
	2021					2022*							
	Aug	Sep	Oct	Nov	Dec	Jan	Feb	March	April	May	June	July	Aug
Food and beverages.....	23,157.09	19,762.17	21,548.06	24,512.25	25,267.72	25,206.26	25,401.12	28,862.49	28,763.12	30,396.91	29,331.86	30,718.41	25,657.38
Industrial supplies (Non-Food)	15,833.11	11,730.28	17,397.97	13,392.89	15,431.86	14,325.77	16,483.04	18,874.44	16,232.55	21,074.84	21,524.79	18,354.11	18,920.12
Fuel and Lubricants.....	636.56	485.48	231.34	693.37	569.53	576.44	638.59	649.56	608.47	709.23	681.48	620.99	916.31
Machinery & other capital Equipment.....	785.38	967.62	1,152.87	705.83	861.31	569.89	734.45	951.32	682.26	977.36	768.72	952.03	1,313.89
Transport equipment.....	476.13	549.37	685.70	583.11	806.04	229.85	415.68	432.86	871.84	652.97	762.22	849.68	553.94
Consumer goods Not elsewhere specified..	14,386.79	15,239.15	16,663.47	15,470.92	14,769.42	13,100.82	17,550.23	17,705.33	15,377.27	16,923.82	15,500.21	16,525.52	14,586.49
Goods not elsewhere specified.....	0.61	2.70	570.27	0.00	0.00	0.00	0.00	0.00	0.00	0.00	0.00	1.05	116.43
Total	55,275.67	48,736.77	58,249.68	55,358.37	57,705.87	54,009.04	61,223.10	67,475.99	62,535.51	70,735.12	68,569.27	68,021.79	62,064.56
Percentage Shares:.....													
Food and Beverages	41.89	40.55	36.99	44.28	43.79	46.67	41.49	42.77	45.99	42.97	42.78	45.16	41.34
Industrial Supplies (Non-Food).....	28.64	24.07	29.87	24.19	26.74	26.52	26.92	27.97	25.96	29.79	31.39	26.98	30.48
Fuel and Lubricants	1.15	1.00	0.40	1.25	0.99	1.07	1.04	0.96	0.97	1.00	0.99	0.91	1.48
Machinery and other Capital Equipment....	1.42	1.99	1.98	1.28	1.49	1.06	1.20	1.41	1.09	1.38	1.12	1.40	2.12
Transport Equipment.....	0.86	1.13	1.18	1.05	1.40	0.43	0.68	0.64	1.39	0.92	1.11	1.25	0.89
Consumer Goods not elsewhere specified.	26.03	31.27	28.61	27.95	25.59	24.26	28.67	26.24	24.59	23.93	22.61	24.29	23.50
Goods not elsewhere specified	0.00	0.01	0.98	-	-	0.00	0.00	0.00	0.00	0.00	0.00	0.00	0.19
TOTAL	100.00	100.00	100.00	100.00	100.00	100.00	100.00	100.00	100.00	100.00	100.00	100.00	100.00

Source: Kenya Revenue Authority (KRA)

*Provisional

Table 14 (a) Major Origins of Imports

											Value (KSh Million)
Month	United Arab Emirates	United Kingdom	South Africa	Saudi Arabia	Japan	India	USA	Germany	Netherlands	France	China
2021											
January.....	15,030.59	2,319.46	3,817.06	10,091.06	6,676.66	13,321.57	5,490.58	3,219.51	870.96	1,815.79	39,908.40
February.....	8,299.60	3,165.87	2,351.63	7,733.54	6,438.55	17,487.54	5,463.17	2,969.54	4,227.29	1,981.49	30,192.24
March.....	14,763.76	3,484.21	4,652.60	8,437.10	9,336.63	19,380.77	9,282.15	5,617.20	5,494.45	2,420.50	36,947.80
April.....	11,952.69	2,405.78	2,951.96	11,415.19	8,805.94	21,504.08	4,101.05	2,824.74	4,576.33	1,498.19	33,251.25
May.....	17,776.19	2,885.77	3,542.97	4,563.09	7,345.80	16,830.99	5,834.16	2,925.18	6,421.75	2,042.91	33,881.43
June.....	8,881.49	2,804.02	5,006.60	2,249.96	7,447.67	21,458.08	6,007.00	3,500.92	4,407.30	1,587.83	34,723.81
July.....	11,581.72	2,361.82	2,576.07	9,102.82	9,491.93	20,281.95	6,081.01	2,906.08	5,064.51	1,225.94	38,368.79
August.....	19,660.43	2,734.48	3,854.43	10,622.50	9,028.14	15,499.26	6,902.45	3,415.09	3,015.19	2,493.33	34,428.59
September.....	14,405.23	2,763.31	4,505.55	15,202.56	5,958.14	22,496.28	13,250.83	7,824.59	1,820.18	2,542.29	37,236.38
October.....	19,796.47	2,211.13	4,230.42	14,839.12	9,792.56	19,206.96	7,718.41	2,156.23	1,595.31	1,298.96	42,725.28
November.....	12,806.99	3,083.65	3,673.53	13,396.31	7,870.77	20,632.64	7,028.67	2,778.28	3,069.49	1,805.32	36,412.80
December.....	23,825.77	3,617.96	2,978.52	7,030.52	9,793.02	22,899.94	7,106.04	2,928.31	6,264.34	1,798.83	43,400.82
2022*											
January.....	12,463.81	2,041.55	4,260.92	13,011.61	6,818.88	25,504.80	6,704.58	3,070.41	2,037.42	1,735.88	35,891.59
February.....	23,456.83	3,400.95	10,091.31	13,229.47	9,280.22	15,150.68	6,068.54	2,313.63	1,943.44	1,219.61	40,749.21
March.....	36,265.17	3,649.49	3,398.83	10,726.53	9,326.81	21,434.90	11,657.12	2,214.60	1,627.02	1,608.13	35,686.82
April.....	34,784.08	2,570.05	3,599.83	15,740.75	8,304.45	30,811.11	7,630.54	2,151.05	1,499.40	1,143.34	31,191.36
May.....	33,331.85	2,344.10	6,405.89	14,384.54	9,282.91	23,704.16	8,750.32	2,926.30	1,327.54	2,342.50	39,754.25
June.....	37,575.20	3,300.46	2,998.75	10,294.87	8,302.22	33,645.76	5,708.68	3,586.06	2,304.49	2,031.81	44,674.38
July.....	32,803.77	2,491.50	9,092.69	2,506.40	7,140.04	17,322.51	9,309.07	2,308.06	9,240.69	1,549.23	39,060.09
August.....	46,881.30	3,999.93	3,043.40	2,118.87	9,325.16	18,805.21	6,822.87	2,079.70	4,589.96	2,300.13	42,745.71

Source: Kenya Revenue Authority

*Provisional

Table 14(b): Imports by Broad Economic Category

Descriptions	Value in KSh Million												
	2021					2022*							
	Aug	Sep	Oct	Nov	Dec	Jan	Feb	Mar	Apr	May	June	July	Aug
Food and beverages.....	16,180.56	19,552.39	20,524.12	18,589.18	16,579.31	16,527.33	15,334.57	18,421.57	18,780.43	24,307.03	23,695.43	16,237.03	24,047.25
Industrial supplies (Non-Food)	68,984.29	71,503.34	71,486.73	74,003.83	77,087.41	85,370.87	67,124.20	84,579.93	70,888.83	82,731.43	89,598.33	76,361.86	89,515.13
Fuel and Lubricants.....	32,669.14	33,626.97	35,069.24	39,800.13	41,408.04	34,894.21	41,800.43	49,412.30	58,759.47	68,687.32	51,639.64	66,715.01	71,754.91
Machinery & other capital Equipment.....	25,619.49	25,234.35	28,901.56	26,440.80	60,465.33	25,682.25	28,831.61	24,453.93	20,035.73	23,188.47	27,314.10	24,562.32	24,425.44
Transport equipment.....	14,514.69	21,905.19	15,562.63	16,313.71	19,612.12	11,803.58	12,981.64	14,998.16	12,240.29	17,041.20	18,431.64	12,525.05	13,118.51
Consumer goods Not elsewhere specified..	14,781.02	17,895.76	16,169.48	16,514.55	20,033.35	19,152.40	16,392.93	21,246.79	14,110.61	17,476.58	16,780.83	14,663.62	15,641.05
Goods not elsewhere specified.....	201.26	604.96	149.42	150.55	193.88	841.98	1,347.27	403.93	468.07	6.32	254.33	1,924.95	978.65
Total	172,950.46	190,322.95	187,863.17	191,812.75	235,379.45	194,272.63	183,812.64	213,516.62	195,283.44	233,438.35	227,714.31	212,989.83	239,480.94
Percentage Shares:.....													
Food and Beverages	9.36	10.27	10.93	9.69	7.04	8.51	8.34	8.63	9.62	10.41	10.41	7.62	10.04
Industrial Supplies (Non-Food).....	39.89	37.57	38.05	38.58	32.75	43.94	36.52	39.61	36.30	35.44	39.35	35.85	37.38
Fuel and Lubricants	18.89	17.67	18.67	20.75	17.59	17.96	22.74	23.14	30.09	29.42	22.68	31.32	29.96
Machinery and other Capital Equipment....	14.81	13.26	15.38	13.78	25.69	13.22	15.69	11.45	10.26	9.93	11.99	11.53	10.20
Transport Equipment.....	8.39	11.51	8.28	8.51	8.33	6.08	7.06	7.02	6.27	7.30	8.09	5.88	5.48
Consumer Goods not elsewhere specified.	8.55	9.40	8.61	8.61	8.51	9.86	8.92	9.95	7.23	7.49	7.37	6.88	6.53
Goods not elsewhere specified.....	0.12	0.32	0.08	0.08	0.08	0.43	0.73	0.19	0.24	0.00	0.11	0.90	0.41
TOTAL	100	100	100	100	100	100	100	100	100	100	100	100	100

Source: Kenya Revenue Authority

*Provisional

Table 14 (c): Mobile Money Transactions

As at the end of month	Mobile money Agents	Mobile money subscriptions (millions)	Number of Transactions (millions) ¹	Value (KSh billions) ²
2021				
January	287,410	66.59	173.91	590.36
February	294,111	67.16	164.20	567.99
March	293,403	65.93	182.29	537.75
April	294,706	67.11	173.35	502.22
May	298,883	67.77	180.76	536.69
June	301,457	67.78	175.83	532.63
July	303,718	68.54	184.00	587.98
August	304,822	68.09	184.51	586.52
September	305,831	67.70	180.85	585.38
October	295,105	66.88	190.06	618.14
November	299,053	67.15	185.98	600.97
December	298,272	68.03	189.80	622.14
2022				
January	299,860	68.28	181.85	585.82
February	301,108	67.94	171.39	568.71
March	302,837	68.62	195.82	664.31
April	295,237	68.72	188.24	663.53
May	305,830	70.03	192.95	692.62
June	304,693	70.33	186.20	665.09
July	309,856	71.58	194.77	722.52
August	310,450	70.06	184.81	677.36

¹ Total agent cash in cash out

² Total agent cash in cash out

Source: Central Bank of Kenya

Table 14(d): International trade in ICT

KSh Million

	2021						2022						
	Jul	Aug	Sep	Oct	Nov	Dec	Jan	Feb	Mar	Apr	May	Jun	Jul
Imports													
Office machines 1.....	64.55	166.32	74.75	125.54	73.93	135.10	65.51	268.95	119.79	62.88	135.48	152.94	287.78
Automatic data processing machines, storage units etc.....	912.33	1,024.90	2,247.61	1,292.12	1,083.89	1,650.01	1,261.23	1,356.82	2,655.33	1,915.99	1,222.17	1,434.65	1,157.23
Part and accessories 2.....	40.81	67.18	53.28	74.02	54.89	43.17	45.39	44.46	70.78	57.64	109.23	105.57	43.40
Monitors and projectors and reception apparatus for television3.....	741.37	709.74	764.34	703.05	519.66	682.05	826.50	1,086.45	817.44	922.86	738.36	960.61	839.25
Reception apparatus for radio broadcasting4	16.60	18.71	28.16	16.85	36.80	16.15	4.61	117.75	20.05	8.95	15.72	15.72	18.02
Recording equipments 5.....	12.23	17.93	10.00	8.44	116.28	8.83	12.31	14.07	116.20	14.28	19.30	9.02	16.13
Telecommunications equipment 6.....	3,417.78	1,284.60	1,233.65	1,778.35	2,225.12	4,139.32	1,995.15	1,680.01	2,568.62	1,200.97	1,635.44	2,634.03	2,794.52
Exports													
Office machines 1.....	31.74	2.81	0.52	3.58	0.02	14.18	0.17	0.01	1.27	2.48	2.48	13.06	0.29
Automatic data processing machines, storage units etc.....	10.19	16.16	43.20	29.05	13.05	131.31	23.50	33.30	56.28	29.74	62.69	54.02	26.27
Part and accessories 2.....	0.71	0.87	0.90	4.51	2.36	0.01	0.65	0.29	5.92	7.22	8.22	5.42	3.88
Monitors and projectors and reception apparatus for television3.....	40.50	8.56	3.63	27.54	15.31	22.97	1.00	41.95	90.12	4.86	1.86	2.87	4.52
Reception apparatus for radio broadcasting4	3.44	0.01	0.34	0.26	0.00	9.90	0.02	-	1.00	0.16	1.31	0.04	0.04
Recording equipments 5.....	0.03	0.68	25.41	0.13	1.60	0.11	0.00	0.69	0.25	0.07	0.72	0.02	0.02
Telecommunications equipment 6.....	15.19	13.87	0.00	81.09	123.74	193.93	6.46	434.13	258.92	57.08	31.84	280.08	60.23

Source; Kenya Revenue Authority (KRA).....

¹ Electronic calculating machines, cash registers, accounting machines, postage-

² For office machines and data processing machines

³ Include Television sets, decoders etc

⁴ Whether or not combined with sound recording or reproducing apparatus or a

⁵ Sound recording, video recording or reproducing apparatus including or not

⁶ Such as computer, laptops, networking equipments etc plus their parts and accessories such as telephone sets, microphones,electric sound amplifier sets Television cameras, digital or video cameras recorders, radio or tv transmission apparatus etc

_ No data

Table 15(a): Local Electricity Generation by Source

							KWh Million
Month	Hydro	Geo - Thermal	Thermal ¹	Wind	Solar	Co-Generation	Total
2021							
January	330.31	464.78	74.69	137.65	7.44	0.03	1,014.91
February	281.40	422.15	105.51	109.84	6.97	0.04	925.92
March	305.11	460.68	63.08	199.92	7.77	0.03	1,036.59
April	307.93	424.54	59.60	164.71	7.41	0.06	964.23
May	369.02	385.38	116.17	130.21	7.59	0.04	1,008.40
June	317.99	408.96	84.17	184.61	7.41	0.05	1,003.19
July	285.79	463.16	122.59	152.69	13.06	0.05	1,037.35
August	274.03	452.79	109.35	190.07	17.02	0.05	1,043.30
September	261.68	439.81	107.24	187.06	18.24	0.03	1,014.07
October	309.26	387.80	117.64	200.91	23.43	0.01	1,039.05
November	293.33	378.49	134.91	195.68	23.04	0.04	1,025.49
December	339.13	348.50	167.26	131.45	27.85	0.03	1,014.22
2022*							
January	320.30	310.79	206.26	156.28	32.41	0.00	1,026.03
February	244.23	304.77	223.97	123.29	30.09	0.05	926.40
March	243.20	410.35	170.16	201.76	35.14	0.01	1,060.62
April	228.86	441.39	125.82	179.24	31.04	0.04	1,006.39
May	284.04	521.44	79.71	152.76	33.21	0.03	1,071.19
June	264.86	493.85	83.10	181.07	28.20	0.02	1,051.10
July	252.39	520.69	104.36	208.40	24.71	0.02	1,110.57
August	256.76	513.48	120.54	185.70	22.43	0.02	1,098.92

Source: Kenya Power

*Provisional

¹ Includes all offgrid power

Figure 7: Electricity Generation by Source

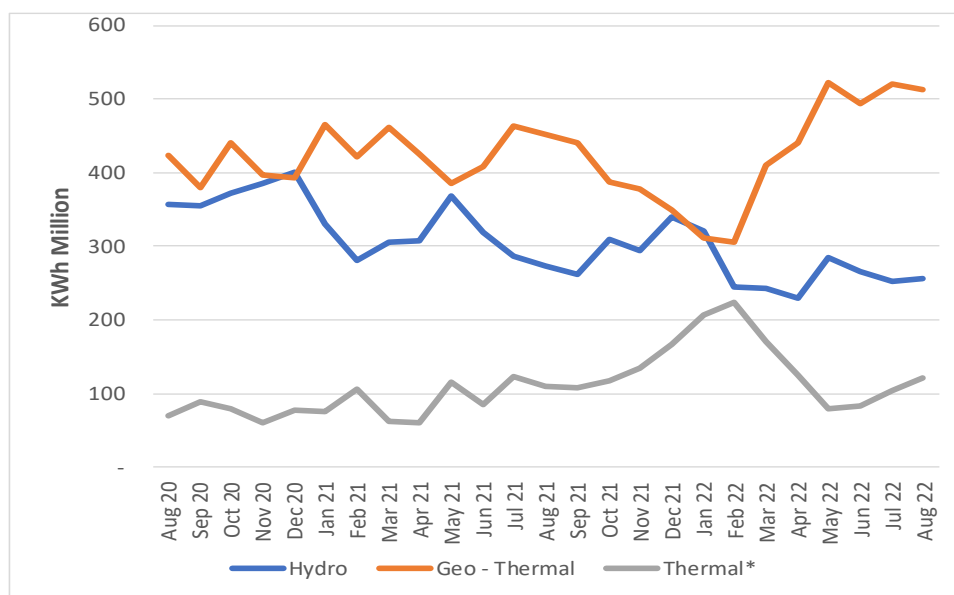


Table 15(b): Generation and Consumption of Electricity

Million KWh										
Month	Generation					Consumption				
	Local Generation	Imports			Total Generation	Total KPLC Sales	Exports			
		Uganda	Tanzania	Ethiopia			Uganda	Tanzania	Total Exports	
2021										
January	1,014.91	16.00	0.00	0.44	16.44	1,031.35	792.01	0.73	0.00	0.73
February	925.92	20.26	0.00	0.41	20.67	946.59	742.34	0.49	0.00	0.49
March	1,036.59	22.20	0.00	0.40	22.60	1,059.19	799.42	0.54	0.00	0.54
April	964.23	15.20	0.00	0.40	15.60	979.83	775.02	2.79	0.00	2.79
May	1,008.40	23.73	0.00	0.43	24.16	1,032.56	785.36	3.00	0.00	3.00
June	1,003.19	23.19	0.00	0.33	23.52	1,026.72	796.34	1.90	0.00	1.90
July	1,037.35	28.68	0.00	0.43	29.11	1,066.46	813.35	1.72	0.00	1.72
August	1,043.30	26.33	0.00	0.44	26.77	1,070.08	823.95	1.61	0.00	1.61
September	1,014.07	26.78	0.00	0.45	27.23	1,041.30	801.61	1.09	0.00	1.09
October	1,039.05	26.21	0.00	0.47	26.68	1,065.73	835.08	1.47	0.00	1.47
November	1,025.49	26.52	0.00	0.43	26.95	1,052.44	805.08	1.43	0.00	1.43
December	1,014.22	27.68	0.00	0.48	28.16	1,042.38	800.94	1.43	0.00	1.43
2022*										
January	1,026.03	30.34	0.00	0.49	30.83	1,056.87	826.80	0.85	0.00	0.85
February	926.40	34.14	0.00	0.46	34.60	961.00	760.20	0.18	0.00	0.18
March	1,060.62	31.07	0.00	0.53	31.60	1,092.22	831.21	0.95	0.00	0.95
April	1,006.39	27.00	0.00	0.42	27.42	1,033.81	803.56	1.40	0.00	1.40
May	1,071.19	23.86	0.00	0.47	24.33	1,095.52	847.54	2.05	0.00	2.05
June	1,051.10	23.39	0.00	0.43	23.82	1,074.92	849.10	1.68	0.00	1.68
July	1,110.57	18.88	0.00	0.48	19.35	1,129.92	862.05	3.16	0.00	3.16
August	1,098.92	16.03	0.00	0.50	16.52	1,115.44	826.82	4.27	0.00	4.27

Source: Kenya Power

*Provisional

Table 15(c): Consumption of Petroleum Fuels

								'000 MT
Month	AGO (Light Diesel Oil)	Jet	Fuel Oil	Motor Spirit	Illuminatin g Kerosene	IDO (Heavy Diesel Oil)	LPG	Aviation Gasoline
2021								
January.....	183.26	41.27	18.25	121.83	10.07	0.00	36.68	0.05
February....	177.73	40.25	27.75	119.43	10.45	0.03	26.92	0.07
March.....	214.34	42.85	12.40	135.08	11.60	0.37	31.77	0.08
April.....	180.98	37.51	18.62	116.21	10.23	0.23	26.38	0.07
May.....	181.11	35.93	31.16	122.63	9.67	0.23	33.88	0.64
June.....	193.00	37.41	36.11	124.09	8.73	0.01	33.22	0.12
July.....	192.19	41.10	27.02	133.79	8.91	0.03	24.30	0.06
August.....	189.60	43.27	28.16	129.64	9.25	0.04	24.53	0.07
September..	187.81	44.72	23.58	126.94	10.07	0.00	35.97	0.05
October.....	186.72	48.61	27.97	127.45	7.62	0.03	37.33	0.07
November..	201.65	44.16	26.71	140.02	8.13	0.06	32.35	0.07
December..	199.62	49.79	37.35	147.34	8.12	0.00	28.06	0.05
2022*								
January.....	184.67	39.67	22.78	137.80	8.09	0.00	20.15	0.07
February....	191.68	48.72	30.28	124.00	6.59	0.00	15.98	0.09
March.....	202.14	50.50	39.94	126.18	8.06	0.00	29.33	0.07
April.....	187.05	47.84	33.09	131.89	7.55	0.00	8.27	0.07
May.....	194.68	49.26	16.76	126.75	9.04	0.00	37.63	0.05
June.....	192.60	48.58	14.52	126.70	8.62	0.00	11.79	0.06

Source: Ministry of Energy and Petroleum and Energy & Petroleum Regulatory Authority (EPRA)

MT: Denotes Metric Tonnes

*Provisional

Table 15(d): Average Retail Prices for Selected Fuel Products within Nairobi

KSh per litre			
Period	Motor Gasoline Premium	Light Diesel Oil (Gasoil)	Illuminating Kerosene
2021			
January.....	106.99	96.4	87.12
February....	115.18	101.91	92.44
March.....	122.81	107.66	97.85
April.....	122.81	107.66	97.85
May.....	126.37	107.66	97.85
June.....	127.14	107.66	97.85
July.....	127.14	107.66	97.85
August.....	127.14	107.66	97.85
September..	134.72	115.6	110.82
October.....	129.72	110.6	103.54
November..	129.72	110.6	103.54
December..	129.72	129.72	103.54
2022			
January.....	129.72	129.72	103.54
February....	129.72	129.72	103.54
March.....	113.44	144.62	125.5
April.....	144.62	125.5	113.44
May.....	150.12	131	118.94
June.....	159.12	140	127.94
July.....	159.12	140	127.94
August.....	159.12	140	127.94

Table 15(e): Average Retail Prices for Selected Fuels in Kenya (National Average Retail Prices)

Period	Motor Gasoline Premium (KSh per Litre)	Light Diesel Oil (KSh per Litre)	Illuminating Kerosene (KSh per Litre)	L.P.G (KSh per 13 Kg)	Charcoal (KSh per Kg)
2021					
January.....	107.86	97.33	88.07	2,018.93	58.51
February.....	116.03	102.84	93.37	2,031.21	58.37
March.....	123.66	108.58	98.78	2,074.23	59.42
April.....	123.66	108.58	98.78	2,074.23	59.83
May.....	127.21	108.58	98.78	2,074.23	58.07
June.....	127.98	108.58	98.78	2,074.23	58.79
July.....	127.98	108.58	98.78	2,394.18	59.52
August.....	127.98	108.58	98.78	2,420.68	59.38
September.....	135.54	116.51	111.74	2,445.23	60.37
October.....	130.54	111.51	104.46	2,513.74	61.01
November.....	130.54	111.51	105.46	2,611.18	60.74
December.....	130.54	111.51	106.46	2,638.83	61.31
2022					
January.....	130.54	111.51	106.46	2,659.24	63.11
February.....	130.54	111.51	106.46	2,659.70	63.71
March.....	135.54	116.51	104.46	2,866.20	62.85
April.....	145.44	126.41	114.36	2,924.59	62.40
May.....	150.94	131.91	119.86	3,176.88	63.69
June.....	159.94	140.91	128.86	3,218.22	64.83
July.....	159.94	140.91	128.86	3,100.67	65.30
August.....	159.94	140.91	128.86	3,103.17	66.81

Revised+

Figure 8: Average Prices for Liquefied Petroleum Gas in Kenya ('000 KSh per 13 Kg cylinder)

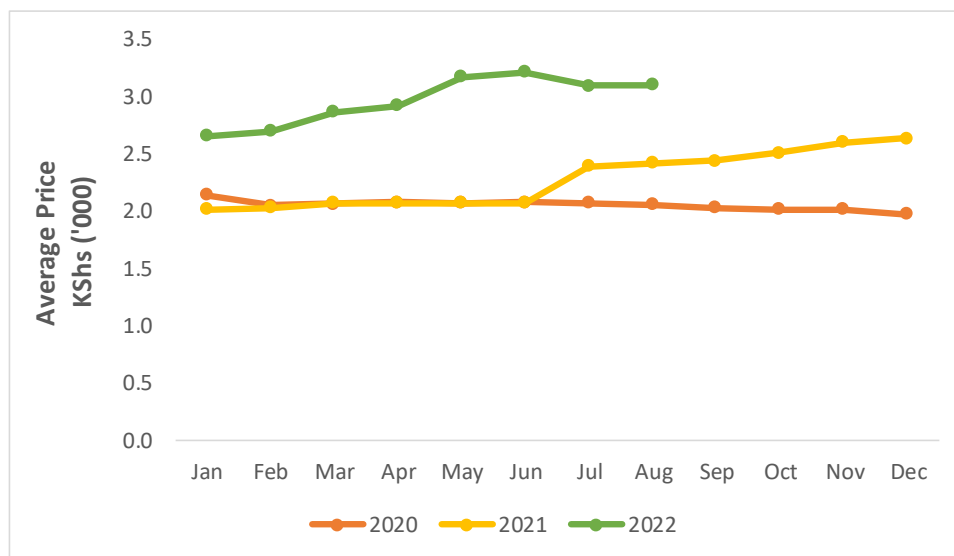


Table 15(f): Opec Reference basket and Murban Crude Oil Prices

Month/Year	US\$/ BBL				
	2018	2019	2020	2021	2022
January.....	66.28	60.81	66.09	54.38	85.41
February.....	65.98	65.64	55.53	61.05	93.95
March.....	66.31	68.60	33.92	64.56	113.48
April.....	70.97	73.05	17.66	63.24	105.64
May.....	76.71	69.70	25.17	66.91	113.87
June.....	73.22	62.75	37.05	71.89	117.72
July.....	76.00	64.86	43.42	73.53	108.55
August.....	74.91	60.16	45.19	70.33	101.90
September.....	78.75	62.39	41.54	73.88	
October.....	81.28	60.88	40.08	82.11	
November.....	68.05	63.48	42.61	80.37	
December.....	59.33	66.66	49.17	74.38	

US\$/ BBL: US Dollar per Barrel

2016-2019 prices are Murban Adnoc crude oil monthly average prices

Price: Abu Dhabi Free On Board (FOB)

ADNOC: Abu Dhabi National Oil Corporation

* As from Feb 2020 all prices published will refer to the OPEC reference basket as defined by the Monthly oil market report

* As from Feb 2020 all prices published are crude spot prices on the 20th of the reference month

Table 16: Value of Building Plans Approved for Nairobi City County

Month	KSh Million					
	Actual Value of Buildings			Real *		
	Residential	Non Residential	Aggregate	Residential	Non Residential	Aggregate
2021						
January.....	6,329.78	2,702.02	9,031.80	63.23	27.20	90.26
February.....	7,497.72	2,130.36	9,628.08	74.90	21.45	96.22
March.....	11,270.96	2,903.69	14,174.64	112.60	29.23	141.66
April.....	4,284.75	619.74	4,904.48	42.80	6.24	49.02
May.....	2,708.76	2,038.99	4,747.75	27.06	20.53	47.45
June.....	1,402.78	283.10	1,685.89	1,390.13	280.55	1,670.68
July.....	1,293.78	279.37	1,573.15	1,282.11	276.85	1,558.96
August.....	162.53	123.11	285.64	161.07	122.00	283.07
September.....	9,567.72	5,359.27	14,926.99	9,481.44	5,310.94	14,792.38
October.....	17,717.69	1,875.12	19,592.81	17,557.92	1,858.21	19,416.13
November.....	8,580.41	1,880.48	10,460.88	8,503.03	1,863.52	10,366.55
December.....	5,481.45	6,362.91	11,844.36	5,432.02	6,305.53	11,737.54
2022						
January.....	13,430.32	5,501.79	18,932.11	14,512.81	5,945.23	20,458.04
February.....	6,879.27	4,476.99	11,356.27	7,433.74	4,837.84	12,271.58
March.....	15,672.26	3,619.89	19,292.14	16,935.44	3,911.65	20,847.09
April.....	18,139.51	3,482.23	21,621.74	19,601.56	3,762.90	23,364.46
May.....	4,384.84	1,683.70	6,068.54	4,057.78	1,558.11	5,615.90
June.....	5,133.29	2,826.93	7,960.21	4,750.40	2,616.07	7,366.47

Source: Nairobi City County

* Actual deflated by new Construction Input Price Indices beginning June 2021

Table 17(a): Domestic Production of Sugar

Month/Year	Metric tonnes				
	2018	2019	2020	2021	2022*
January	62,819	53,060	53,155	58,044	64,839
February	53,835	46,139	51,083	61,508	64,191
March	49,148	45,463	52,699	66,194	79,448
April	36,682	35,312	45,468	58,404	68,508
May	28,933	36,307	46,350	57,796	
June	28,320	28,545	49,680	58,968	
July	30,260	25,097	53,155	57,513	
August	35,676	32,835	53,434	64,134	
September	40,725	33,356	54,873	45,347	
October	45,324	35,259	54,830	49,899	
November	41,107	30,900	50,227	60,022	
December	38,268	38,662	38,834	62,333	
Total	491,097	440,935	603,788	700,162	276,986

Source: Sugar Directorate

* Provisional

Table 17(b): Production of Soft Drinks

Month	'000 Litres				
	2018	2019	2020	2021	2022*
January	52,062	53,585	52,654	50,153	51,384
February	49,685	55,218	42,072	42,749	50,561
March	52,580	61,413	52,109	53,157	61,159
April	45,690	58,230	35,951	43,742	
May	41,482	53,086	34,129	40,266	
June	44,827	46,074	47,273	48,457	
July	43,725	47,149	39,833	33,864	
August	48,795	49,248	39,290	43,744	
September	45,956	53,234	52,436	53,383	
October	46,546	47,586	47,215	53,394	
November	50,201	50,715	42,916	56,226	
December	54,021	55,398	64,707	58,453	
Total	575,569	630,936	550,585	577,589	

* provisional

Table 17(c): Production of Assembled Vehicles

Month/Year	Numbers				
	2018	2019	2020	2021	2022*
January	395	431	614	560	777
February	529	614	861	565	1,114
March	548	633	830	705	1,154
April	409	739	669	737	
May	407	732	659	609	
June	366	556	415	576	
July	587	648	735	798	
August	434	709	595	962	
September	606	595	591	1,173	
October	569	728	676	1,138	
November	476	872	533	968	
December	327	545	547	1,198	
Total	5,653	7,802	7,725	9,989	3,045

* Provisional

Table 17(d): Production of Galvanized Sheets

Month/Year	Metric Tonnes					
	2017	2018	2019	2020	2021	2022*
January.....	26,230	23,919	20,124	23,397	18,631	21,546
February.....	22,994	21,890	22,749	21,989	20,762	19,671
March.....	22,574	22,048	26,313	18,527	21,781	23,989
April.....	23,225	21,434	23,214	6,259	21,572	
May.....	23,081	22,271	22,501	18,042	21,165	
June.....	15,424	21,434	24,667	23,730	22,365	
July.....	22,640	22,510	23,260	24,493	20,343	
August.....	15,296	21,847	21,918	23,226	19,662	
September....	24,188	22,425	22,641	20,801	17,479	
October.....	21,312	23,906	22,619	22,868	20,111	
November.....	24,357	22,877	21,871	23,268	25,926	
December.....	21,438	21,266	22,547	20,854	20,348	
Total	262,759	267,828	274,425	247,455	250,147	65,206

* Provisional

Table 17(e): Cement Production and Consumption

Month/Year	Tonnes					
	2020		2021		2022*	
	Production	Consumption	Production	Consumption	Production	Consumption
January.....	530,404	528,904	669,530	663,795	855,883	845,087
February.....	548,818	547,543	612,980	606,204	818,496	798,007
March.....	559,424	551,914	721,444	715,968	911,250	877,874
April.....	509,197	506,800	695,953	684,497	842,239	819,889
May.....	511,961	509,698	717,669	707,536	752,698	717,566
June.....	594,421	591,799	698,424	685,697	768,716	738,519
July.....	666,341	659,798	876,998	861,938	785,317	759,038
August.....	712,701	691,588	896,825	879,063	753,968	725,677
September.....	707,033	677,381	866,344	856,980		
October.....	731,253	723,124	892,975	870,442		
November.....	668,507	662,609	807,553	788,229		
December.....	666,855	661,504	791,050	778,088		
TOTAL.....	7,406,914	7,312,662	9,247,745	9,098,436	6,488,567	6,281,657

*Provisional

Table 17(f): Milk Intakes in the Formal Sector

Million Litres						
Month/Year	2017	2018	2019	2020	2021	2022*
January.....	45.13	51.55	68.07	63.39	63.80	69.36
February.....	46.24	47.30	54.66	53.88	64.62	66.42
March.....	38.64	49.85	54.33	56.09	62.79	61.76
April.....	47.09	52.01	41.46	48.61	53.32	61.78
May.....	47.24	49.63	48.29	49.36	77.33	64.29
June.....	48.87	50.33	52.33	53.24	74.07	65.69
July.....	42.55	53.18	63.54	54.31	69.49	
August.....	54.95	52.56	60.46	59.31	67.75	
September.....	55.81	56.37	63.21	58.04	72.04	
October.....	58.14	55.25	59.32	59.71	66.59	
November.....	55.21	57.02	51.30	60.58	65.22	
December.....	51.51	68.15	68.91	67.86	64.89	
Total.....	591.38	643.20	685.87	684.38	801.91	389.29

Source: Kenya Dairy Board

* Provisional

Figure 9: Milk Intake in the Formal Sector

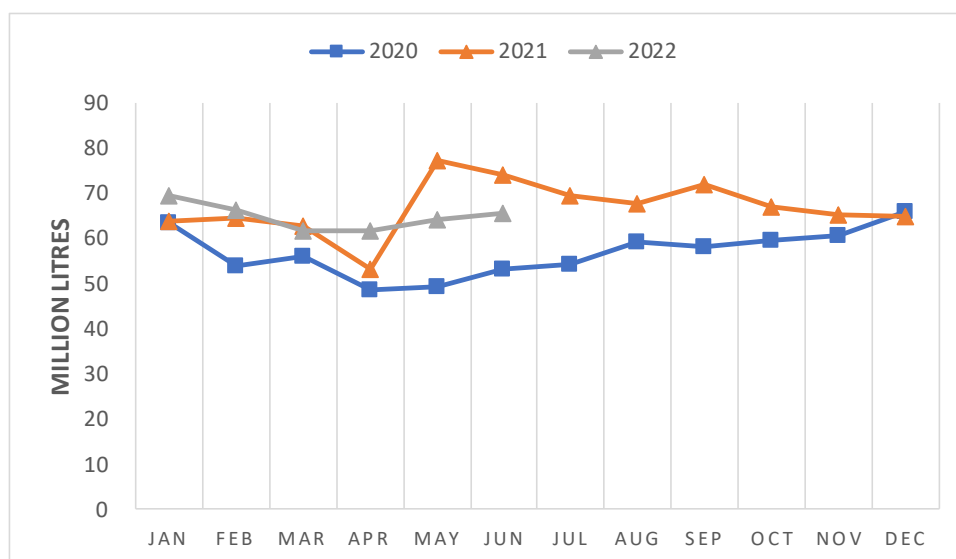


Table 18: Visitor Arrivals through J.K.I.A and M.I.A

Month	AIRPORT		Total
	JKIA	MIA	
Numbers¹			
2021			
January	43,234	3,045	46,279
February	32,047	3,005	35,052
March	37,214	3,194	40,408
April	27,850	3,037	30,887
May	32,153	1,735	33,888
June	46,494	2,038	48,532
July	64,493	4,532	69,025
August	72,291	6,257	78,548
September	66,667	3,633	70,300
October	67,608	5,201	72,809
November	71,271	5,435	76,706
December	82,867	7,637	90,504
2022*			
January	63,277	6,655	69,932
February	67,560	6,390	73,950
March	76,366	5,073	81,439
April	77,379	3,949	81,328
May	87,058	3,429	90,487
June	103,332	4,834	108,166
July	109,766	6,423	116,189
August	94,231	7,908	102,139

Source: Department of immigration Services Kenya

¹ Visitor arrivals exclude Kenyans

* Provisional

Figure 10: Visitor Arrivals through J.K.I.A and M.I.A

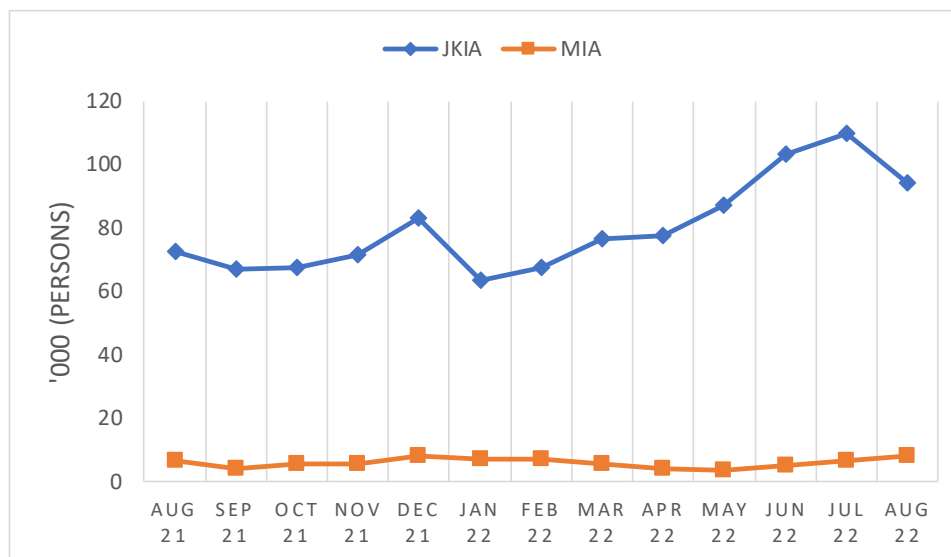


Table 19(a): Jomo Kenyatta international Airport-Embarked Passengers by Port of Destination

PORTS/MONTH	Number												
	2021					2022*							
	Aug	Sep	Oct	Nov	Dec	Jan	Feb	Mar	Apr	May	Jun	Jul	Aug
Amsterdam	9,019	7,522	7,654	7,544	6,626	9,374	6,756	8,611	9,773	10,994	11,860	12,929	16,425
Brussels	0	0	0	0	0	0	0	0	0	0	0	0	0
London	840	1,161	4,472	6,381	8,510	11,070	9,628	12,149	12,268	11,483	12,494	13,788	15,444
Paris	8,754	6,441	6,091	6,533	7,235	9,155	7,101	8,586	8,304	9,377	11,254	12,209	14,840
Zurich	0	0	0	9	0	0	0	0	0	0	0	0	0
Other Europe	9,246	7,398	7,103	7,340	8,142	8,835	6,505	8,461	9,314	8,795	9,551	11,481	11,970
Total Europe	27,859	22,522	25,320	27,807	30,513	38,434	29,990	37,807	39,659	40,649	45,159	50,407	58,679
New York	2,912	1,339	1,121	1,134	1,890	2,747	1,493	1,571	1,602	2,002	3,696	5,280	4,456
Other North America	0	0	0	0	0	0	0	0	0	0	0	0	0
Total North America	2,912	1,339	1,121	1,134	1,890	2,747	1,493	1,571	1,602	2,002	3,696	5,280	4,456
Dubai	16,696	15,525	16,301	19,221	12,927	1,039	16,975	20,398	17,344	17,313	18,095	22,545	22,769
Jeddah	6,735	3,289	4,475	3,238	4,150	2,830	1,465	2,302	4,460	2,571	3,655	4,414	3,974
Other Middle East	23,501	24,017	23,521	19,535	22,894	19,087	17,254	22,200	19,604	19,450	20,408	24,238	22,010
Total Middle East	46,932	42,831	44,297	41,994	39,971	22,956	35,694	44,900	41,408	39,334	42,158	51,197	48,753
Mumbai	542	675	1,906	1,985	1,893	1,715	1,264	1,888	2,863	3,560	4,532	5,257	4,504
Bangkok	0	0	0	0	0	0	523	0	483	506	422	473	457
Other Far East	1,325	2,238	2,019	3,364	3,430	2,269	1,525	2,953	2,100	1,918	2,987	4,616	3,014
Total Far East	1,867	2,913	3,925	5,349	5,323	3,984	3,312	4,841	5,446	5,984	7,941	10,346	7,975
Addis Ababa	11,119	10,002	10,327	9,309	9,970	13,001	8,457	12,420	13,049	14,435	14,681	16,477	13,951
Bujumbura	918	886	1,085	1,035	1,314	920	1,152	1,456	1,716	1,742	2,077	2,901	2,257
Dar-es-alaam	5,238	4,962	6,161	5,458	6,645	5,059	6,168	7,586	7,146	8,646	8,827	11,072	10,595
Entebbe	5,258	6,007	7,626	8,062	9,670	8,094	7,939	10,908	11,504	10,732	11,722	13,961	11,686
Kigali	4,297	3,877	4,023	4,115	3,710	3,505	3,704	4,541	4,833	6,476	6,010	6,765	5,959
Kinshasa	1,286	1,241	2,256	3,190	2,307	1,464	1,583	2,192	1,787	1,784	1,973	2,139	3,027
Other East & Central Africa	2,151	2,026	2,193	2,420	2,944	2,624	3,808	3,805	3,346	4,710	4,875	6,517	5,639
Total East & Central Africa	30,267	29,001	33,671	33,589	36,560	34,667	32,811	42,908	43,381	48,525	50,165	59,832	53,114
Mauritius	101	111	1,057	927	1,067	843	1,147	1,208	1,893	1,495	2,420	2,632	2,687
Seychelles	375	254	318	351	409	531	396	575	666	602	841	930	1,064
Zanzibar	853	1,308	1,971	3,270	4,405	2,417	2,623	3,287	3,180	2,813	4,100	5,419	5,609
Other Indian Ocean Islands	953	491	858	939	1,154	947	1,113	1,996	1,045	2,534	3,482	5,272	4,504
Total Indian Ocean Islands	2,282	2,164	4,204	5,487	7,035	4,738	5,279	7,066	6,784	7,444	10,843	14,253	13,864
Abidjan	230	299	402	557	1,012	749	720	946	521	1,093	1,018	1,059	808
Douala	319	445	477	502	913	410	354	159	0	0	0	152	629
Lagos	1,789	2,070	2,159	3,833	3,794	2,039	2,191	3,228	3,489	3,542	3,445	3,472	3,406
Accra	1,518	1,590	1,567	1,937	2,260	1,767	1,584	2,031	2,077	2,695	2,614	3,262	3,518
Other West Africa	5	0	5	30	0	4	0	6	0	34	8	43	0
Total West Africa	3,861	4,404	4,610	6,859	7,979	4,969	4,849	6,370	6,087	7,364	7,085	7,988	8,361
Johannesburg	4,297	4,733	5,489	5,945	6,088	6,177	6,289	8,409	8,102	8,709	8,056	12,435	10,219
Harare	740	950	993	1,184	1,443	1,517	1,155	1,456	1,834	1,678	1,594	1,671	2,034
Lilongwe	1,054	1,391	2,134	2,049	1,961	1,869	1,884	2,290	2,498	2,509	2,755	3,490	3,234
Lusaka	933	961	1,359	1,389	918	1,008	1,674	2,213	2,941	2,617	2,532	2,886	4,079
Cape Town	81	42	405	450	481	384	314	365	494	409	435	1,042	672
Other South Africa	499	1,110	1,460	1,458	1,042	1,182	1,090	1,570	1,545	1,630	1,727	2,110	1,355
Total Southern Africa	7,604	9,187	11,840	12,475	11,933	12,137	12,406	16,303	17,414	17,552	17,099	23,634	21,593
Cairo	2,601	1,954	2,186	2,541	3,053	4,372	3,131	3,946	3,551	2,507	3,568	4,529	4,092
Khartoum	4	1,304	0	0	174	225	161	336	202	477	337	599	317
Juba	2,773	2,505	3,234	3,740	3,080	5,148	2,925	3,428	3,518	4,089	3,448	3,847	3,752
Other North Africa	0	138	183	3	4	1	96	76	3	206	0	67	0
Total North Africa	5,378	5,901	5,603	6,284	6,311	9,746	6,313	7,786	7,274	7,279	7,353	9,042	8,161
Other International	7,063	6,465	5,377	6,133	6,096	7,154	7,067	7,910	5,000	7,738	8,507	9,090	7,234
Total International	136,025	126,727	139,968	147,111	153,611	141,532	139,214	177,462	174,055	183,871	200,006	241,069	232,190

Source: Kenya Airports Authority

*Provisional

Table 19(b): Jomo Kenyatta international Airport- Landed Passengers by Port of Origin

PORTS/MONTH	2021					2022*								Number
	Aug	Sep	Oct	Nov	Dec	Jan	Feb	Mar	Apr	May	Jun	Jul	Aug	
Amsterdam	7,084	6,917	7,369	7,447	8,471	7,954	6,904	7,846	9,991	11,209	12,557	13,808	13,836	
Brussels	0	0	0	0	0	0	0	0	0	0	0	0	0	
London	1,111	1,464	4,714	7,034	11,884	8,709	9,296	10,689	10,415	10,721	12,405	13,854	14,418	
Paris	5,817	4,743	6,551	5,851	7,382	6,763	6,520	7,324	6,820	7,144	9,102	10,270	10,196	
Zurich	0	0	0	0	0	0	0	0	0	0	0	0	0	
Other Europe	8,645	6,689	7,582	7,279	8,575	7,291	6,865	7,326	8,276	8,238	10,467	12,107	10,655	
Total Europe	11,570	7,766	9,904	16,377	23,336	22,657	19,813	26,216	27,611	36,312	44,531	50,039	49,105	
New York	2,044	1,145	951	1,252	2,789	1,819	1,467	1,410	1,535	2,624	4,236	5,008	3,921	
Other North America	0	0	46	0	0	0	0	0	0	0	5	0	0	
Total North America	507	306	927	2,279	2,732	2,044	1,145	997	1,252	2,789	4,241	5,008	3,921	
Dubai	13,923	12,807	12,239	17,304	19,903	4,364	11,982	18,403	17,879	15,884	19,555	24,284	19,916	
Jeddah	1,950	1,963	1,446	2,639	3,250	2,031	1,221	1,738	1,868	4,322	2,475	3,606	2,276	
Other Middle East	21,110	19,197	15,072	13,195	24,411	15,968	14,980	16,017	14,853	16,472	19,912	23,239	19,069	
Total Middle East	17,645	14,586	17,275	25,598	34,491	36,983	33,967	28,757	33,138	47,564	41,942	51,129	41,261	
Mumbai	129	777	1,845	1,681	1,872	1,755	1,521	2,051	3,146	4,908	4,866	5,640	6,180	
Bangkok	0	0	0	0	0	0	377	185	204	436	487	625	740	
Other Far East	2,673	3,394	3,440	2,736	2,349	1,963	1,994	2,693	3,128	2,932	2,544	2,855	3,267	
Total Far East	6,001	4,995	1,754	2,731	3,294	2,802	4,171	5,285	4,417	4,221	7,897	9,120	10,187	
Addis Ababa	11,662	9,559	11,201	12,289	12,358	7,389	8,677	10,727	12,003	14,432	15,166	15,759	13,324	
Bujumbura	1,132	1,089	1,137	982	1,038	912	1,135	1,566	1,486	1,763	1,808	2,088	2,848	
Dar-es-alaam	4,270	4,164	4,830	5,482	6,724	5,728	6,512	7,355	7,429	8,014	8,502	9,308	9,114	
Entebbe	5,384	5,933	6,904	7,041	7,680	6,973	7,855	9,916	10,307	12,342	11,014	12,198	10,761	
Kigali	4,021	4,221	4,475	4,964	5,678	4,275	4,598	5,694	5,785	5,203	7,465	8,185	7,741	
Kinshasa	1,347	1,601	2,421	2,504	2,117	918	1,479	1,867	1,417	1,483	1,637	1,941	2,660	
Other East & Central Africa	1,526	1,661	2,030	2,187	2,719	2,446	2,981	3,466	3,160	3,424	4,672	5,466	4,822	
Total East & Central Africa	21,291	19,388	22,645	25,153	24,986	29,342	28,228	32,998	35,449	38,314	50,264	54,945	51,270	
Mauritius	69	127	478	927	935	1,096	781	874	1,733	1,714	2,043	2,743	2,112	
Seychelles	230	258	220	248	539	347	285	584	616	769	650	727	782	
Zanzibar	2,510	2,384	3,224	3,847	3,823	3,881	4,225	4,139	3,869	4,867	6,380	8,553	9,696	
Other Indian Ocean Islands	2,399	1,465	965	1,218	1,423	1,380	1,711	2,054	1,039	2,746	3,058	4,025	6,468	
Total Indian Ocean Islands	1,554	1,308	1,735	2,138	3,247	5,208	4,234	4,887	6,240	6,720	12,131	16,048	19,058	
Abidjan	374	267	431	577	913	666	769	957	706	1,217	918	1,182	832	
Douala	0	84	0	0	134	0	11	0	0	0	0	174	868	
Lagos	1,603	1,890	2,505	4,254	2,721	2,786	3,006	2,754	2,932	2,963	3,015	3,187	3,849	
Accra	1,757	1,528	1,631	2,035	1,976	2,070	2,128	2,728	2,350	2,575	2,833	3,325	3,651	
Other West Africa	467	782	320	605	447	606	589	191	0	39	0	31	0	
Total West Africa	4,337	4,052	3,438	3,577	4,099	4,201	4,551	4,887	7,471	6,191	6,766	7,899	9,200	
Johannesburg	4,958	5,003	5,764	6,487	9,288	6,429	6,077	7,846	8,517	8,594	10,142	10,368	10,021	
Harare	809	957	1,093	1,445	1,648	870	1,451	1,752	2,929	2,676	2,592	2,269	2,921	
Lilongwe	567	703	999	1,147	1,376	816	801	1,068	1,261	1,171	1,566	2,038	1,826	
Lusaka	1,056	1,166	1,261	1,707	1,993	1,505	1,508	1,987	2,334	2,031	2,219	2,068	2,917	
Cape Town	41	62	340	507	692	413	275	323	336	377	540	789	787	
Other South Africa	1,396	1,983	2,085	2,924	2,422	1,700	2,337	2,506	2,864	3,144	3,013	3,291	3,174	
Total Southern Africa	7,526	7,697	7,955	8,111	8,661	8,827	9,874	11,542	14,217	17,419	20,072	20,823	21,646	
Cairo	1,967	1,704	1,562	2,095	2,109	1,837	2,031	2,443	1,963	2,562	3,262	3,663	3,195	
Khartoum	0	5	0	0	292	263	182	212	182	82	31	63	262	
Juba	2,838	2,956	3,126	3,411	5,002	2,535	2,581	3,400	4,443	3,391	3,768	4,022	3,755	
Other North Africa	2	134	238	7	14	15	115	142	112	138	0	159	0	
Total North Africa	3,163	2,956	3,079	3,358	5,501	4,807	4,799	4,926	5,513	7,417	7,061	7,907	7,212	
Other International	5,688	5,254	5,209	5,457	6,280	5,373	6,016	6,898	5,460	6,021	7,076	7,624	6,749	
Total International	77,973	66,327	70,277	90,899	115,206	122,559	116,036	125,704	140,765	173,227	201,981	230,542	219,609	

Source: Kenya Airports Authority

*Provisional

Table 19(c): New Vehicle Registration

Body Type	2021								2022*					Number
	May	Jun	Jul	Aug	Sep	Oct	Nov	Dec	Jan	Feb	Mar	Apr	May	
Saloons.....	475	685	753	774	736	686	794	937	663	144	558	323	334	
Station Wagons.....	3,484	5,404	6,260	6,073	5,794	5,441	6,304	7,571	4,888	797	4,627	3,218	3,137	
Vans.....	275	482	392	427	480	408	432	389	352	129	601	495	426	
Pick Ups.....	53	108	101	93	82	78	227	144	166	39	179	163	176	
Mini Buses.....	57	85	88	63	44	46	48	61	28	8	61	116	42	
Buses.....	51	55	77	78	51	66	97	127	66	5	110	98	14	
Lorries.....	483	588	588	619	704	595	664	507	516	40	185	123	83	
Trailers.....	217	350	256	300	205	177	137	160	138	-	-	-	-	
Motor Cycles.....	28,188	36,551	20,533	8,212	11,426	32,005	23,484	22,579	27,556	1,171	10,920	13,668	10,920	
Three Wheelers.....	596	634	331	510	356	388	454	546	436	8	153	133	31	
Wheeled Tractors.....	162	270	249	204	198	152	175	180	193	-	24	12	8	
Others.....	572	683	781	595	617	452	701	501	417	36	219	157	136	
Totals.....	34,613	45,895	30,409	17,948	20,693	40,494	33,517	33,702	35,419	2,377	17,637	18,506	15,307	

Source: National Transport and Safety Authority

* Provisional

Table 19(d): Passenger and Cargo Movement on the Standard Gauge Railway

Month	PASSENGER				FREIGHT			
	2021		2022*		2021		2022*	
	No. Passengers	Revenue (KSh)	No. Passengers	Revenue (KSh)	Tonnage	Revenue (KSh) ¹	Tonnage	Revenue (KSh) ¹
January	152,951	163,768,440	160,053	176,370,640	449,731	1,051,986,508	477,247	966,804,389
February	138,922	156,558,140	130,374	149,288,100	434,204	1,008,035,069	538,524	1,064,639,949
March	156,653	174,392,600	228,353	243,613,780	507,924	1,109,039,860	520,203	1,051,062,325
April	643	67,560	264,119	279,579,940	460,787	1,000,272,863	429,640	951,312,836
May	141,403	152,376,090	175,936	204,124,500	434,733	963,026,946	495,619	1,013,027,042
June	163,741	182,759,840	163,102	188,759,280	430,455	907,962,250	515,569	1,124,728,284
July	223,106	243,004,595	228,007	253,997,710	361,308	901,893,390	543,994	1,277,633,943
August	201,539	227,271,996	178,669	228,532,337	398,925	939,572,008	513,408	1,169,477,945
September	175,425	195,647,010			446,954	1,036,426,489		
October	216,469	244,798,380			506,157	1,030,159,408		
November	172,584.00	193,674,600			500,470	1,123,647,363		
December	242,332.00	266,872,933			475,760	1,105,484,219		
TOTAL	1,985,768	2,201,192,184	1,528,613	1,724,266,287	5,407,406	12,177,506,375	4,034,204	8,618,686,714

Source: Kenya Railways Corporation

Revised +

*Provisional

¹ Excludes deductions from discounts offered to customers

Table 19(e): Monthly Cargo Throughput at the port of Mombasa

Metric tonnes													
Year	2021						2022*						
	Jul	AUG	SEP	OCT	Nov	Dec	JAN	FEB	Mar	Apr	May	Jun	Jul
Imports													
Dry General-Containerized	721,768	771,931	674,580	676,027	828,753	736,482	771,317	798,388	643,218	739,334	684,621	827,565	794,036
Dry General- Conventional	244,138	144,253	152,977	190,095	186,757	185,632	157,240	128,152	235,026	209,610	227,933	177,509	310,575
Dry Bulk	389,531	580,380	494,272	528,142	446,675	323,135	466,464	536,532	653,404	665,995	861,878	515,520	449,133
P.O.L ¹	752,922	607,033	569,033	713,828	610,835	668,014	689,849	661,944	846,074	554,568	731,105	526,358	743,141
Other Bulk Liquids	80,350	97,777	92,240	122,576	82,515	94,685	46,148	86,538	59,775	54,304	83,559	68,400	79,614
Sub-Total	2,188,709	2,201,374	1,983,102	2,230,668	2,155,535	2,007,948	2,131,018	2,211,554	2,437,497	2,223,811	2,589,096	2,115,352	2,376,499
Exports													
Dry General-Containerized	332,581	363,608	301,805	269,919	329,253	294,305	336,695	361,111	352,548	332,395	330,656	385,806	399,557
Dry General-Conventional	749	5,316	2,001	6,810	2,868	4,692	1,643	2,397	6,621	1,827	5,748	1,572	603
Dry Bulk	10,000	43,650	50,000	62,000	-	66,400	32,300	6,400	121,500	17,000	64,000	40,000	10,550
P.O.L ¹	4,466	1,500	6,050	-	-	-	-	-	-	-	-	-	-
Bunkers	1,253	1,308	1,400	2,246	1,601	1,503	1,602	2	-	-	2,648	-	587
Other Bulk Liquids	-	-	-	-	-	-	-	-	-	-	-	-	-
Sub-Total	349,049	415,382	361,256	340,975	333,722	366,900	372,240	369,910	480,669	351,222	403,052	427,378	411,297
Transshipment	238,661	140,937	147,391	196,985	241,449	145,213	155,951	208,876	242,379	260,539	305,630	139,223	190,846
Restows	9,242	10,164	14,151	9,579	7,242	8,877	7,595	7,806	12,428	8,329	5,832	6,924	8,405
Grand Total	2,785,661	2,767,857	2,505,900	2,778,207	2,737,948	2,528,938	2,666,804	2,798,146	3,172,973	2,843,901	3,303,610	2,688,877	2,987,047

Source: Kenya Ports Authority

¹Refers to Petroleum, Oil and Lubricants