

Leading Economic Indicators



Kenya Inflation rate



DECEMBER 2020

Contents

Table 1(a): Kenya Consumer Price Indices	7
Table 1(b): Kenya Inflation rate	8
Table 2: Mean Foreign Exchange rates of Kenyan Shilling against Selected Major Currencies at the end of the Month	10
Table 3: Interest rate (%)	11
Table 4: Nairobi Securities Exchange	12
Table 5(a): Money Supply	14
Table 5(b): Gross Foreign Exchange Reserves	15
Table 6: Coffee Sales and Prices*	16
Table 7: Tea Production and Auction Prices	17
Table 8: Cane Deliveries	18
Table 9(a): Average Monthly Retail Prices for Dry Maize, 2019 (per Kg)	19
Table 9(b): Average Monthly Retail Prices for Dry Maize, 2020 (per Kg)	20
Table 9(C): Average Monthly Retail Prices for Dry Beans, 2019 (per Kg)	21
Table 9(d): Average Monthly Retail Prices for Dry Beans, 2020 (per Kg)	22
Table 10: Exports of Coffee and Tea	23
Table 11: Monthly Exports of Fresh Horticultural Produce	24
Table 12: External Trade	25
Table 13(a): Major Destinations of Domestic Exports	26
Table 13(b): Domestic Exports by Broad Economic Category	27
Table 14 (a) Major Origins of Imports	28
Table 14(b): Imports by Broad Economic Category	29
Table 14 (c): Mobile Money Transactions	30
Table 14(d): International trade in ICT	31
Table 15(a): Local Electricity Generation by Source	32
Table 15(b): Generation and Consumption of Electricity	34
Table 15(c): Consumption of Petroleum Fuels	35
Table 15(d): Average Retail Prices for Selected Fuel Products within Nairobi	36
Table 15(e): Average Retail Prices for Selected Fuels in Kenya (National Average Retail Prices)	37
Table 15(f): Opec Reference basket and Murban Crude Oil Prices	39
Table 16: Value of Building Plans Approved for Nairobi City County	40
Table 17(a): Domestic Production of Sugar	41
Table 17(b): Production of Soft Drinks	42
Table 17(c): Production of Assembled Vehicles	43
Table 17(d): Production of Galvanized Sheets	44
Table 17(e): Cement Production and Consumption	45
Table 17(f): Milk Intakes in the Formal Sector	46
Table 18: Visitor Arrivals through J.K.I.A and M.I.A	47
Table 19(a): Jomo Kenyatta international airport-Embarked Passengers by Port of Destination	49
Table 19(b): Jomo Kenyatta international airport- Landed Passengers by Port of Origin	50
Table 19(c): New Vehicle Registration	51
Table 19(d): Passenger and Cargo Movement on the Standard Gauge Railway	52
Table 19(e): Monthly Cargo Throughput at the port of Mombasa	53

LIST OF FIGURES

	Page Number
Fig. 1: Inflation rates	9
Fig. 2: End of Month Mean Exchange rate of Kenya Shillings against Major Selected Currencies	10
Fig. 3: Nairobi Securities Exchange 20 Share Index	13
Fig. 4: Coffee Sales at the Nairobi Coffee Exchange	16
Fig. 5: Tea Production	17
Fig. 6: Cane Deliveries	18
Fig. 7: Electricity Generation by Source	33
Fig. 8: Average Prices for Liquefied Petroleum Gas in Kenya ('000 KSh per 13 Kg cylinder)	38
Fig. 9: Milk Intake in the Formal Sector	46
Fig. 10: Visitor Arrivals through J.K.I.A and M.I.A	48

KEY HIGHLIGHTS

OVERVIEW

The Monthly Leading Economic Indicators report highlights changes in Consumer Price Indices (CPI) and inflation, interest & exchange rates. In addition, the report presents changes in selected indicators of international trade, agriculture, energy, manufacturing, building and construction, tourism and transport.

MACROECONOMIC INDICATORS

The Consumer Price Index (CPI) increased from 110.78 points in November 2020 to 111.87 points in December 2020. The overall rate of inflation rose from 5.33 per cent in November 2020 to 5.62 per cent in December 2020. In December 2020, the Kenyan Shilling depreciated against all major trading currencies. The average yield rate for the 91-day Treasury bills, which is a benchmark for the general trend of interest rates rose from 6.69 per cent in November 2020 to 6.90 per cent in December 2020, while the inter-bank rate rose from 3.28 per cent to 5.29 per cent over the same period.

The Nairobi Securities Exchange (NSE) 20 share index increased from 1,760 points in November 2020 to 1,868 points in December 2020. At the same time the total number of shares traded decreased from 381 million shares to 369 million shares. The total value of NSE shares traded decreased from KSh 11.39 billion in November 2020 to KSh 10.24 billion in December 2020.

Broad money supply (M3), a key indicator for monetary policy formulation, increased from KSh 3,952.31 billion in November 2020 to KSh 3,990.90 billion in December 2020. The value of Gross Foreign Exchange Reserves increased from KSh 1,419.56 billion in November 2020 to KSh 1,443.05 billion in December 2020. The value of Net Foreign Exchange Reserves rose from KSh 732.81 billion to KSh 748.60 billion during the same period.

AGRICULTURE



The quantity of coffee auctioned at the Nairobi Coffee Exchange was 1,668.58 MT in December 2020 while the average auction price stood at KSh 660.07 per kilogram over the same period. The quantity of produced tea increased from 43,412.74 MT in September 2020 to 48,274.64 MT in October 2020. The price of processed tea dropped from KSh 220.18 per kilogram in September 2020 to KSh 214.85 per kilogram in October 2020. The quantity of cane deliveries decreased from 594.18 thousand metric tonnes in November 2020 to 468.59 thousand metric tonnes in December 2020.

The quantity of cut-flower exports in November 2020 was 12,873.18 MT while its value was KSh 10,253.09 million. The volume of vegetable exports decreased from 6,274.31 MT in October 2020 to 5,700.07 MT in November 2020. The value of vegetable exports also decreased from KSh 2,169.66 million to KSh 2,009.31 million during the same period.

INTERNATIONAL TRADE

Volume of trade rose from KSh 189.83 billion in November 2020 to KSh 218.96 billion in December 2020. The value of total exports increased from KSh 50.79 billion in November 2020 to KSh 57.51 billion in December 2020, while the value of imports increased from KSh 139.04 billion in November 2020 to KSh 161.46 billion in December 2020. Domestic exports by Broad Economic Category (BEC) indicated that food and beverages was the main export category in December 2020 accounting for 42.97 per cent of exports, while non-food industrial supplies accounted for 23.89 per cent of the total exports.

Quantity of coffee exported decreased from 3,494.29 MT in November 2020 to 2,405.44 MT in December 2020 and its value dropped from KSh 1,836.61 million to KSh 1,284.84 million over the same period. The quantity of tea exported decreased from 46,352.88 MT in November 2020 to 46,166.69 MT in December 2020. The value of exported tea also dropped from KSh 10,610.96 million to KSh 10,300.58 million over the same period.

Imports by BEC indicate that non-food industrial supplies was the main import category in December 2020 with a share of 38.26 per cent. Machinery & other capital equipment; Fuel and lubricants; and transport equipment accounted for 17.81, 12.57 and 11.51, per cent of the total value of imports, respectively. Foods and beverages accounted for 10.63 per cent of the total imports in December 2020.

ENERGY



Total local electricity generation increased from 997.65 million KWh in November 2020 to 1,012.24 million KWh in December 2020. In the international market, the price of the OPEC crude oil basket increased from US Dollars 42.61 per barrel in November 2020 to US Dollars 49.17 per barrel in December 2020.

The national average domestic retail oil prices of motor gasoline premium rose from KSh 106.72 per litre in November 2020 to KSh 107.69 in December 2020. The price of light diesel oil rose from KSh 91.64 per litre in November 2020 to retail at KSh 92.75 per litre in December 2020. Similarly, the average price for Kerosene rose from KSh 82.58 per litre to retail at KSh 84.50 per litre during the same period. Charcoal prices averaged KSh 57.76 per Kg in December 2020. The price of a 13-Kg cylinder of gas averaged KSh 1,977.36 in December 2020.

MANUFACTURING, BUILDING AND CONSTRUCTION



The quantity of cement produced decreased from 768,898 MT in October 2020 to 716,583 MT in November 2020. Consumption of cement dropped from 760,769 MT in October 2020 to 710,685 MT in November 2020. Sugar production increased from 53,532 Metric tonnes in August 2020 to 54,873 Metric tonnes in September 2020. Production of assembled vehicles in-

creased from 768 units in August 2020 to 798 units in September 2020. Milk uptake in the formal sector rose from 60.58 million litres in November 2020 to 65.80 million litres in December 2020.

ICT, TOURISM AND TRANSPORT



The total number of mobile money transactions was 181.37 million in December 2020 while their value stood at KSh 605.69 billion. The value of imports for telecommunication equipment rose from KSh 2,411.17 million in September 2020 to KSh 3,642.68 million in October 2020.

The total number of visitors arriving through Jomo Kenyatta (JKIA) and Moi International Airports (MIA) increased from 31,875 persons in November 2020 to 47,406 persons in December 2020. The number of passengers who landed at Jomo Kenyatta International Airport (JKIA) increased from 66,726 persons in November 2020 to 97,391 persons in December 2020, and passengers who embarked increased from 64,707 persons to 82,971 persons over the same period. Total monthly throughput at the port of Mombasa dropped from 3,042.86 thousand metric tonnes in October 2020 to 2,818.84 thousand metric tonnes in November 2020.

Table 1(a): Kenya Consumer Price Indices

Kenya CPI: Base period February 2019=100

Group	Nairobi			Nairobi Combined	Rest of Urban Areas	Kenya CPI
	Lower Income	Middle Income	Upper Income			
2019						
%Weights.....	23.30	13.38	4.88	41.57	58.43	100.00
February.....	100.00	100.00	100.00	100.00	100.00	100.00
March.....	101.83	100.23	100.52	101.16	101.81	101.54
April.....	102.91	100.62	100.77	101.92	102.65	102.34
May.....	103.63	101.04	101.30	102.52	103.52	103.11
June.....	104.06	101.30	101.51	102.87	103.98	103.52
July.....	104.33	101.50	101.74	103.11	104.34	103.83
August.....	104.37	101.67	101.82	103.20	104.64	104.04
September...	104.54	101.93	101.92	103.39	104.77	104.20
October.....	104.90	102.05	101.97	103.64	105.19	104.54
November....	105.76	102.38	102.26	104.26	105.82	105.17
December....	106.58	102.71	102.66	104.88	106.66	105.92
2020						
January.....	107.50	102.99	102.65	105.48	107.25	106.51
February.....	108.36	103.34	103.41	106.16	107.89	107.17
March.....	108.85	103.52	103.42	106.50	108.17	107.47
April.....	109.88	104.04	103.69	107.27	109.36	108.49
May.....	109.93	103.74	104.00	107.24	109.57	108.60
June.....	109.70	104.14	103.84	107.22	109.01	108.27
July.....	110.01	103.37	103.79	107.14	109.22	108.35
August.....	109.90	103.49	104.55	107.21	109.54	108.57
September...	110.04	103.63	104.26	107.30	109.48	108.57
October.....	110.40	104.42	104.60	107.79	110.89	109.60
November....	111.31	104.76	104.59	108.41	112.46	110.78
December....	113.06	105.65	105.10	109.74	113.38	111.87

Notes

- 1.Nairobi Lower Income Group constitute of Households spending KSh. 46,355 or less per month in February 2015 (they are 70.89% of the households).
- 2.Nairobi Middle-Income Group constitute of Households spending between KSh. 46,356 up to and including KSh. 184,394 per month in February 2015 (they are 25.58% of the households).
- 3.Nairobi Upper Income Group constitute of Households spending above KSh. 184,395 per month in February 2015 (they are 3.53% of the households).

Table 1(b): Kenya Inflation rate

Period	Inflation Rates					
	Nairobi				Rest of Urban Areas	Kenya CPI
	Lower Income	Middle Income	Upper Income	Combined		
2020						
February.....	8.36	3.34	3.41	6.16	7.89	7.17
March.....	6.90	3.29	2.89	5.28	6.24	5.84
April.....	6.77	3.40	2.90	5.25	6.55	6.01
May.....	6.08	2.68	2.67	4.61	5.84	5.33
June.....	5.42	2.79	2.29	4.23	4.84	4.59
July.....	5.44	1.84	2.01	3.90	4.68	4.36
August.....	5.30	1.79	2.68	3.88	4.69	4.36
September.....	5.26	1.67	2.29	3.77	4.50	4.20
October.....	5.24	2.31	2.57	4.01	5.43	4.84
November.....	5.26	2.32	2.28	3.99	6.28	5.33
December.....	6.08	2.86	2.38	4.64	6.30	5.62

Fig. 1: Inflation rates

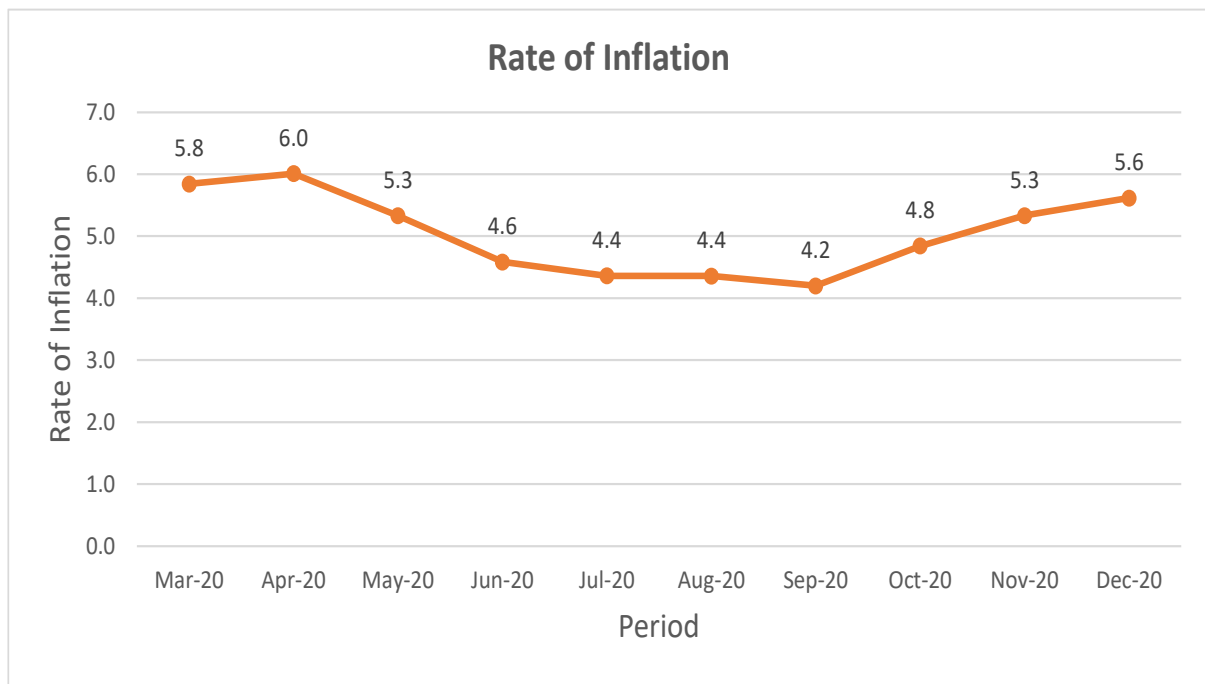


Table 2: Mean Foreign Exchange rates of Kenyan Shilling against Selected Major Currencies at the end of the Month

Year	2020												
Currency	Dec	Jan	Feb	March	April	May	Jun	Jul	Aug	Sep	Oct	Nov	Dec
1 US Dollar.....	101.50	101.08	100.79	103.74	106.41	106.68	106.40	107.27	108.32	108.41	108.64	109.25	110.59
1 Pound Sterling....	132.90	132.15	130.83	128.54	131.92	131.29	133.38	135.30	141.98	140.89	140.94	144.13	148.42
1 Euro.....	112.70	112.25	109.94	114.67	115.61	116.12	119.83	122.51	128.36	128.01	127.85	129.16	134.33
100 Japanese Yen..	93.00	92.47	91.58	96.37	98.78	99.55	98.92	100.34	102.45	102.68	103.22	104.65	106.55
1 SA Rand.....	7.00	7.03	6.72	6.29	5.74	5.87	6.22	6.39	6.46	6.48	6.59	7.01	7.41
USHS/KES.....	36.20	36.41	36.45	36.33	35.56	35.54	35.13	34.53	34.02	34.08	34.22	33.97	33.16
TSHS/KES.....	22.60	22.79	22.91	22.23	21.75	21.70	21.76	21.62	21.42	21.40	21.35	21.23	20.97

Source: Central Bank of Kenya

Fig. 2: End of Month Mean Exchange rate of Kenya Shillings against Major Selected Currencies

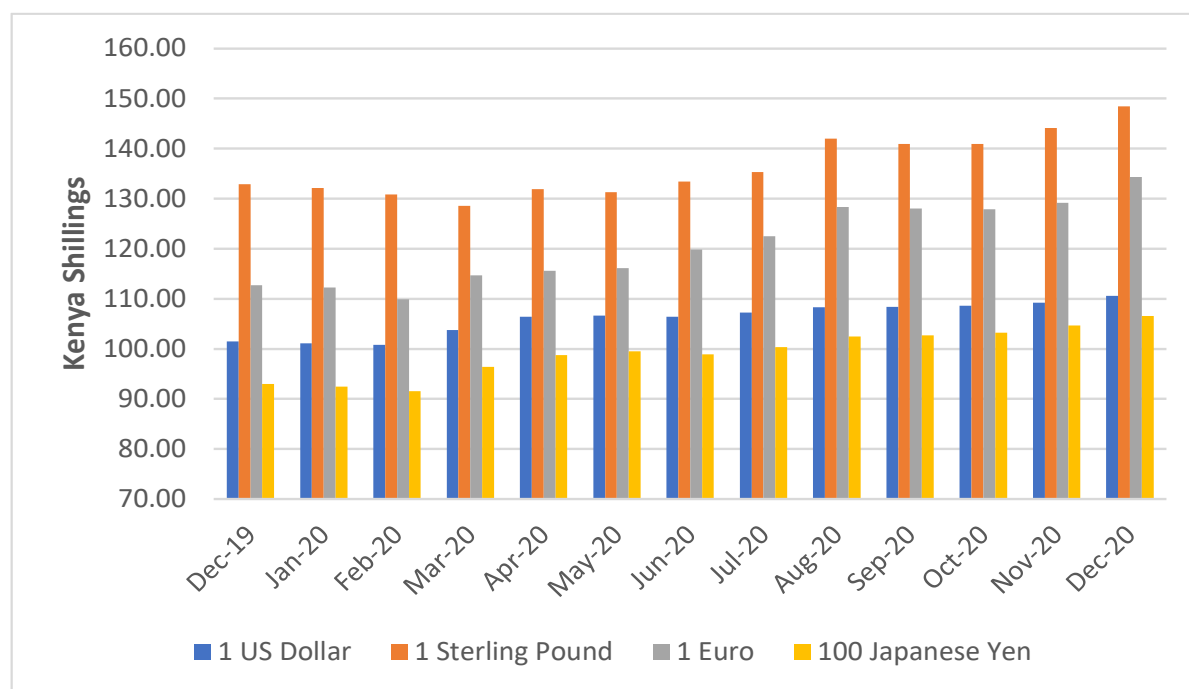


Table 3: Interest rate (%)

Month/Year	Average Yield Rates 91 – Days Treasury Bills	Central Bank Rate	Rates for Commercial Banks Loans and Advances (Weighted Average)	Overdraft Rates	Average Deposit Rate	Inter – Bank Rates	Savings (Commercial Banks Rates)
2019							
January	7.23	9.00	12.50	12.15	7.34	3.32	5.14
February	7.06	9.00	12.47	12.13	7.28	2.51	5.16
March	7.13	9.00	12.51	12.13	7.22	3.72	5.05
April	7.41	9.00	12.50	12.15	7.17	4.12	4.75
May	7.23	9.00	12.47	12.13	7.20	5.61	4.71
June	6.94	9.00	12.47	12.12	7.19	2.98	4.77
July	6.81	9.00	12.39	11.89	6.97	2.28	4.77
August	6.44	9.00	12.46	11.97	6.91	3.70	4.54
September	6.35	9.00	12.47	11.99	6.98	6.59	4.58
October	6.38	9.00	12.43	11.88	6.96	6.86	4.44
November	6.65	8.50	12.38	11.63	6.56	4.24	4.47
December	7.17	8.50	12.24	11.67	7.11	6.03	4.02
2020							
January	7.23	8.25	12.29	11.97	7.07	4.39	4.25
February	7.31	8.25	12.19	11.82	7.06	4.84	4.20
March	7.29	7.25	12.09	11.79	7.07	4.40	4.15
April	7.21	7.00	11.92	11.55	7.01	5.13	4.21
May	7.27	7.00	11.95	11.61	6.96	3.91	4.18
June	7.14	7.00	11.89	11.24	6.86	3.27	4.15
July	6.24	7.00	11.94	11.18	6.78	2.12	4.11
August	6.20	7.00	11.94	11.18	6.63	2.56	4.10
September	6.29	7.00	11.75	11.15	6.41	2.95	3.78
October	6.49	7.00	11.98	11.44	6.27	2.69	3.38
November	6.69	7.00	11.99	11.39	6.31	3.28	3.42
Dec	6.90	7.00				5.29	

Source; Central Bank of Kenya

Table 4: Nairobi Securities Exchange

Month	Number of Equity Transactions	Number of Shares (Million)	Value of Shares (Million KSh)	NSE 20 Share Index
2019				
January.....	24,798	557	16,200	2,983
February.....	23,444	425	14,173	2,916
March.....	20,808	448	15,917	2,846
April.....	18,923	295	9,865	2,797
May.....	23,308	452	12,494	2,677
June.....	18,211	334	10,538	2,633
July.....	20,683	374	11,453	2,628
August	18,893	322	8,652	2,468
September.....	19,481	368	10,558	2,432
October.....	19,944	451	16,019	2,643
November.....	23,231	482	17,021	2,619
December.....	17,537	357	11,966	2,654
2020				
January.....	21,418	336	12,336	2,600
February.....	17,610	385	12,265	2,337
March.....	26,251	639	19,092	1,966
April.....	20,941	439	12,660	1,958
May	24,065	430	14,573	1,948
June.....	25,903	553	12,302	1,942
July.....	28,225	517	13,470	1,804
August	22,980	471	10,543	1,795
September.....	23,589	525	13,924	1,852
October.....	17,369	219	5,881	1,784
November.....	17,275	381	11,393	1,760
December.....	18,108	369	10,237	1,868

Source: Nairobi Securities Exchange Limited

Base Jan 1966=100

Fig. 3: Nairobi Securities Exchange 20 Share Index

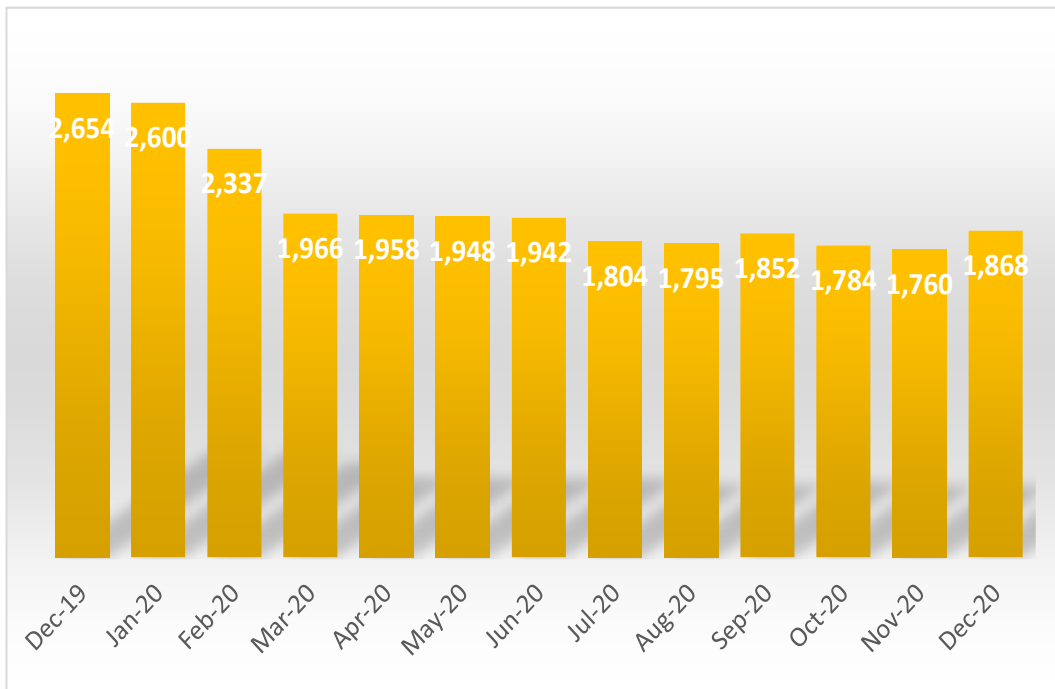


Table 5(a): Money Supply

KSh million

As at end of month	Money (M1)*	Quasi – Money	Total (M2)***	Foreign currency deposits ¹	Broad Money (M3)****	% Change
2019¹						
January	1,464,557	1,293,082	2,757,639	586,644	3,344,283	0.19
February	1,461,012	1,287,545	2,748,557	584,920	3,333,476	-0.32
March	1,520,263	1,318,146	2,838,409	576,915	3,415,324	2.46
April	1,501,685	1,323,773	2,825,458	578,930	3,404,388	-0.32
May	1,495,747	1,342,542	2,838,289	577,947	3,416,236	0.35
June	1,575,496	1,368,241	2,943,737	620,493	3,564,230	4.33
July	1,510,782	1,381,836	2,892,618	616,817	3,509,435	-1.54
August	1,469,142	1,388,187	2,857,313	608,163	3,465,475	-1.25
September	1,459,729	1,406,263	2,865,991	607,399	3,473,390	0.23
October	1,479,014	1,413,154	2,892,168	625,373	3,517,540	1.27
November	1,460,223	1,389,210	2,849,432	612,545	3,461,978	-1.58
December	1,525,237	1,379,115	2,904,352	619,675	3,524,026	1.79
2020						
January	1,524,030	1,391,678	2,915,709	611,296	3,527,005	0.08
February	1,568,052	1,402,049	2,970,101	625,949	3,596,050	1.96
March	1,595,107	1,423,750	3,018,857	642,154	3,661,011	1.81
April	1,595,268	1,443,383	3,038,651	657,302	3,695,953	0.95
May	1,602,094	1,479,236	3,081,331	671,450	3,752,781	1.54
June	1,666,550	1,534,707	3,201,257	662,375	3,863,633	2.95
July	1,683,552	1,553,156	3,236,708	668,737	3,905,444	1.08
August	1,655,723	1,527,030	3,182,753	664,218	3,846,971	-1.50
September	1,665,778	1,514,748	3,180,526	662,974	3,843,500	-0.09
October	1,741,975	1,481,554	3,223,529	699,221	3,922,750	2.06
November	1,759,898	1,478,291	3,238,189	714,124	3,952,313	0.75
December	1,720,337	1,529,886	3,250,223	740,678	3,990,900	0.98

Source: Central Bank of Kenya

* Currency in circulation less cash in banks plus all demand deposits except those of National & County government, Banks, non-residents and foreign currency deposits

** All other deposits in commercial banks, except those of National government.

***Broad money (M2) is the sum of M1, Quasi money in Banks and net Quasi money in NBFIs..

**** Broad Money (M3) includes M2 and Foreign currency deposits

M2=(M1+QM-NBFIs)

M3=M2+FCD

¹ Revised

Table 5(b): Gross Foreign Exchange Reserves

							KSh Million*
Month	Central Monetary Authority		Total	Foreign Assets		Gross Total	Net of Foreign Exchange Liabilities ^
	Central Bank	National Government**		Commercial Banks	NBFI		
2019							
January	859,627	2,001	861,629	317,362	226	1,179,217	708,650
February	855,490	1,981	857,471	316,684	571	1,174,726	713,045
March	857,149	1,982	859,130	333,816	146	1,193,092	721,965
April	848,279	1,989	850,268	361,257	193	1,211,717	746,093
May	1,055,911	1,975	1,057,886	330,133	122	1,388,141	936,362
June	1,048,595	2,024	1,050,619	361,254	207	1,412,081	941,926
July	1,030,383	2,020	1,032,403	357,141	95	1,389,640	902,678
August	990,215	2,004	992,219	370,055	157	1,362,431	870,469
September	977,691	2,004	979,695	378,320	578	1,358,593	837,448
October	962,187	2,014	964,200	411,670	251	1,376,122	858,462
November	938,147	1,997	940,145	377,509	760	1,318,414	797,584
December	939,056	1,984	941,040	385,424	966	1,327,430	806,437
2020							
January	894,748	1,962	896,710	390,881	207	1,287,798	776,129
February	886,264	1,964	888,229	412,126	102	1,300,457	786,418
March	901,765	2,021	903,785	399,097	118	1,303,001	769,721
April	894,377	2,071	896,448	421,551	110	1,318,109	764,631
May	1,039,754	2,072	1,041,827	433,868	85	1,475,780	854,076
June	1,097,796	2,070	1,099,866	419,795	119	1,519,780	887,470
July	1,033,624	2,146	1,035,770	418,356	84	1,454,210	839,569
August	1,030,279	2,164	1,032,442	431,065	66	1,463,573	804,944
September	986,082	2,153	988,234	414,445	402	1,403,081	751,260
October	945,817	2,165	947,981	461,436	65	1,409,483	750,198
November	937,929	2,215	940,144	479,360	56	1,419,560	732,809
December	927,442	2,213	929,655	512,517	881	1,443,054	748,602

Source: Central Bank of Kenya

* Includes encumbered reserves

**National Government includes reserve position in the Fund and deposits with Crown Agents.

^ Revised

Table 6: Coffee Sales and Prices*

Month	2018			2019			2020***		
	QUANTITY (MT)	PRICE (\$ /kg)	PRICE (Ksh /kg)	QUANTITY (MT)	PRICE (\$ /kg)	PRICE (Ksh /kg)	QUANTITY (MT)	PRICE (\$ /kg)	PRICE (Ksh /kg)
January	5,111.90	5.13	527.24	4,166.77	4.46	452.57	3,048.63	4.34	438.95
February	5,832.22	5.69	577.36	5,723.84	4.49	449.47	4,409.60	4.24	427.28
March	4,913.15	4.73	478.14	4,057.03	2.97	298.47	4,845.46	4.06	421.92
April	4,194.24	3.03	304.59	5,307.40	2.01	203.37	2,242.47	2.75	294.70
May	4,619.51	2.15	216.55	4,084.00	1.98	200.58	1,125.04	2.59	276.10
June**	-	-	-	2,020.80	1.89	191.97	-	-	-
July	1,221.20	3.54	356.73	671.60	1.91	196.94	1,310.43	3.32	357.53
August	2,234.56	3.35	337.30	1,646.63	2.10	216.51	1,208.67	4.86	525.29
September	2,299.09	2.86	288.68	1,521.79	2.24	232.60	1,912.58	4.47	484.47
October	2,493.24	3.17	320.55	2,540.68	2.51	259.85	1,328.52	4.85	526.80
November	2,334.41	3.60	368.16	1,116.76	3.24	331.71	1,318.42	5.20	568.36
December	1,577.04	3.95	403.58	770.82	4.29	435.44	1,666.58	5.98	660.07
Annual	36,830.56	3.43	348.24	33,628.12	2.84	289.12	24,416.40	4.24	452.86

Source: Coffee Directorate

* Auction Price

NB: MT denotes Metric Tonnes

*** Provisional

** Nairobi Coffee Exchange was in recess for the months of June 2017, June 2018 and June 2020

Fig. 4: Coffee Sales at the Nairobi Coffee Exchange

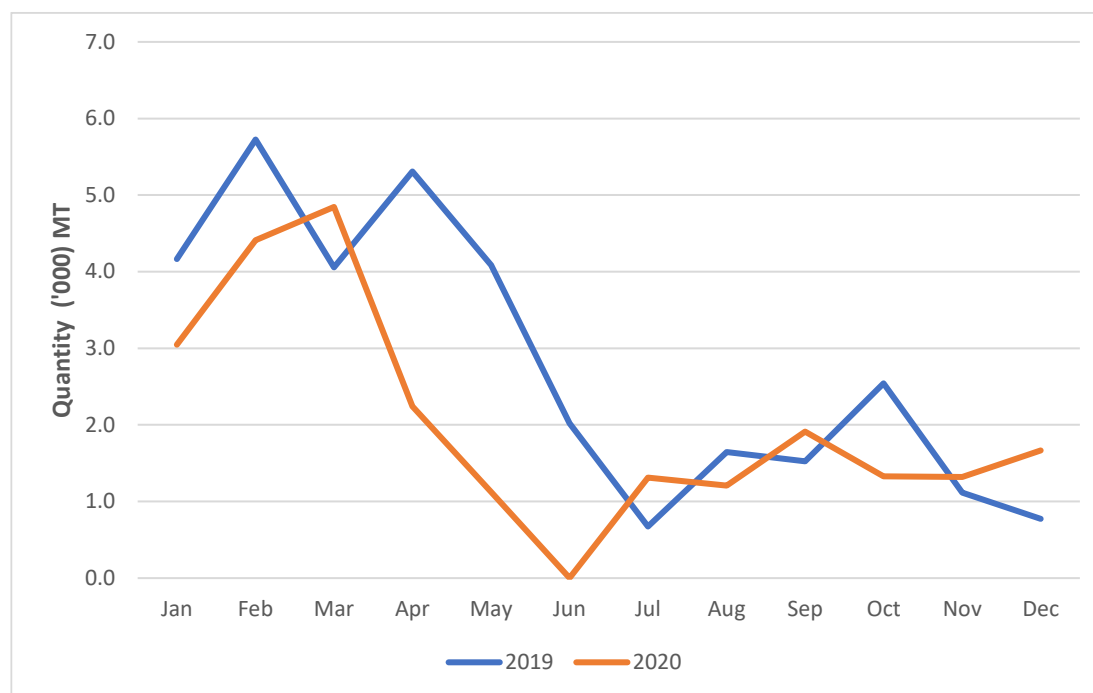


Table 7: Tea Production and Auction Prices

Months	2019			2020*		
	QUANTITY (MT)	PRICE (\$/Kg)	PRICE (KSh/Kg)	QUANTITY (MT)	PRICE (\$/Kg)	PRICE (KSh/Kg)
January	48,386.47	2.30	233.94	53,635.65	2.29	231.50
February	31,445.08	2.16	216.03	49,201.18	2.13	214.49
March	26,461.70	2.13	214.01	55,732.73	1.99	206.53
April	26,131.30	2.26	228.05	49,656.07	2.11	225.07
May	37,758.64	2.39	241.59	47,003.93	1.97	210.37
June	42,425.02	2.16	219.02	46,377.67	1.86	197.62
July	31,458.49	1.99	205.43	36,554.22	1.81	194.15
August	37,200.22	2.11	217.92	38,524.78	2.00	216.61
September	35,533.31	2.21	229.32	43,412.74	2.03	220.18
October	46,305.41	2.33	241.62	48,274.64	1.98	214.85
November	45,087.37	2.30	235.30			
December	50,659.94	2.21	225.20			
Annual	458,852.94	2.21	225.62	468,373.62	2.02	213.14

Source: Tea Directorate

MT denotes Metric Tonnes

*Provisional

Fig. 5: Tea Production

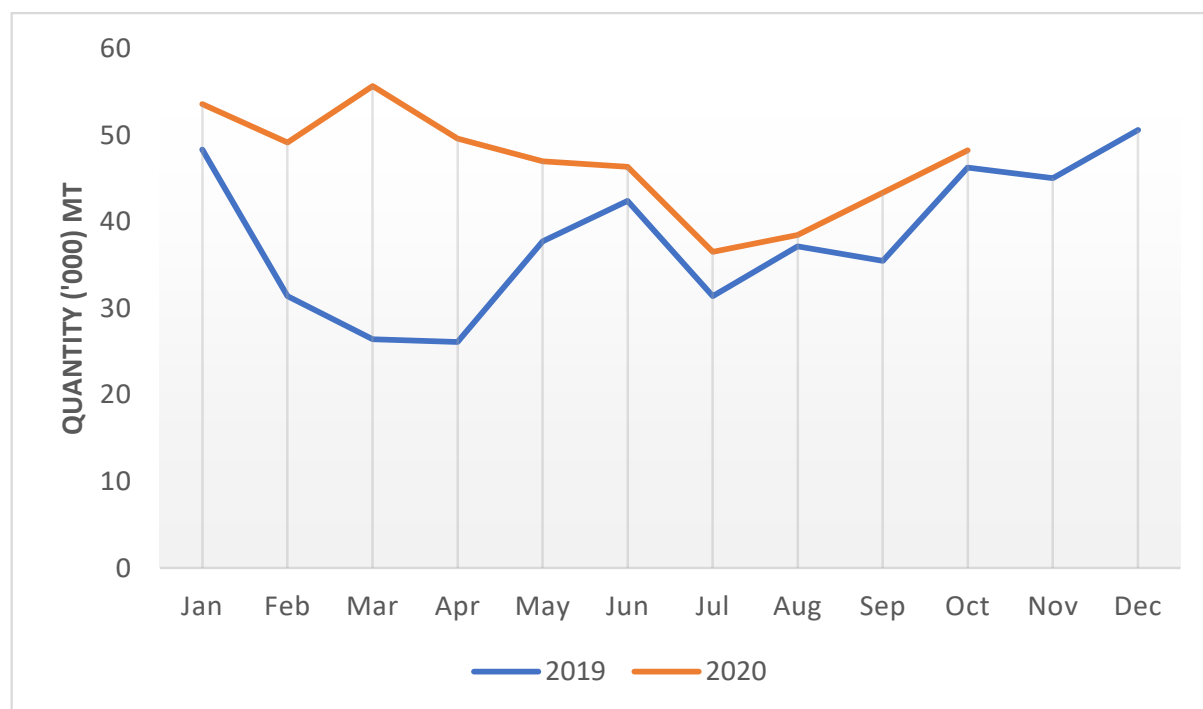


Table 8: Cane Deliveries

Month	000 Metric Tonnes					
	2015 ⁺	2016 ⁺	2017 ⁺	2018 ⁺	2019 ⁺	2020 [*]
January	676.67	670.46	581.60	687.52	538.67	522.89
February	596.04	640.51	519.40	555.88	453.48	529.94
March	675.09	757.06	470.73	445.17	456.17	583.14
April	558.33	576.69	304.79	324.41	381.71	534.69
May	542.06	514.66	231.97	266.43	348.04	544.36
June	560.96	630.06	243.81	314.13	259.27	572.37
July	558.90	609.77	246.89	378.60	266.97	625.61
August	598.42	564.70	176.33	438.73	357.56	629.10
September	673.15	566.99	351.75	445.69	397.52	645.31
October	636.23	576.53	407.06	492.95	406.53	644.24
November	513.82	506.42	578.31	491.96	357.45	594.18
December	575.13	537.81	638.97	420.70	381.74	468.59
Total	7,164.79	7,151.67	4,751.61	5,262.16	4,605.10	6,894.40

Source : Sugar Directorate

* Provisional

Revised ⁺

Fig. 6: Cane Deliveries

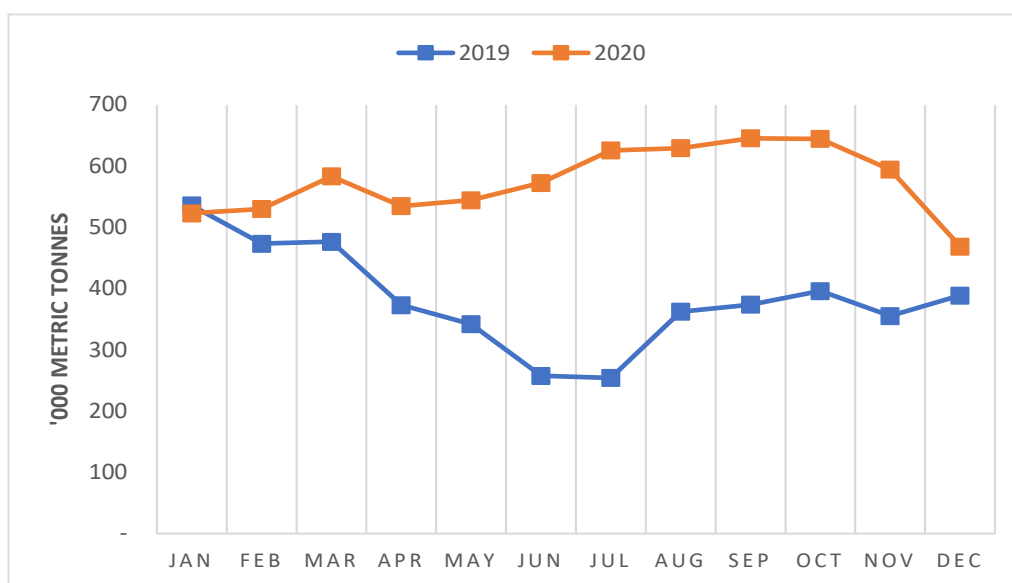


Table 9(a): Average Monthly Retail Prices for Dry Maize, 2019 (per Kg)

	January	February	March	April	May	June	July	August	September	October	November	December
Akala	-	-	-	-	-	-	-	-	34.09	31.82	-	-
Bomet	30.50	32.00	32.00	32.00	32.00	38.40	42.00	32.00	32.00	41.60	48.00	-
Bondo	31.84	-	-	-	-	-	-	-	-	-	-	-
Bumala	47.62	-	-	-	-	38.10	40.95	38.10	36.90	33.33	-	45.24
Bura Tana	-	50.00	50.00	50.00	-	-	-	-	-	-	-	-
Burn Forest	20.00	21.00	25.00	25.63	39.38	45.00	40.00	40.00	40.00	40.00	35.00	35.00
Busia Town	-	-	-	-	-	47.62	43.65	38.78	35.24	33.33	-	47.62
Butere	21.88	25.00	27.08	42.96	34.96	26.52	27.02	22.85	34.11	32.55	-	-
Chepsonoi	23.02	22.77	23.54	30.09	38.26	36.28	36.75	40.00	-	37.27	38.65	38.85
Cheptula	25.00	27.38	28.57	36.90	42.86	42.86	45.24	38.10	33.33	34.29	38.10	38.69
Chuka Town	-	-	-	-	-	-	-	-	-	52.63	61.26	60.66
Daraja Mbili	27.92	26.84	25.57	39.07	37.54	40.93	47.31	36.47	38.02	43.28	40.04	45.71
Eldoret	25.00	26.25	30.00	25.63	45.00	50.00	44.00	40.00	40.00	40.00	35.00	35.00
Embu Town	27.27	25.00	22.73	22.73	-	-	-	-	-	-	-	-
Endebess	-	-	-	-	-	-	-	-	-	21.08	32.15	20.15
Engare	-	-	-	-	-	-	-	18.00	18.00	24.00	-	-
Gakoromere	37.78	33.33	33.33	37.78	44.44	42.59	-	-	50.00	50.56	55.56	55.56
Garissa Town	60.00	60.00	50.00	57.50	64.00	65.00	51.13	52.83	51.67	65.00	-	-
Gatundu	35.83	40.00	22.50	50.00	-	-	-	-	40.83	48.29	54.00	50.00
Githurai	46.67	45.00	40.00	50.00	50.00	50.00	45.24	-	51.67	60.00	43.70	47.50
Hola	-	50.00	50.00	50.00	50.00	50.00	50.00	50.00	50.00	50.00	50.00	-
Iciara	22.23	22.74	22.73	22.73	-	-	-	-	-	-	-	-
Isiolo Town	30.00	30.00	31.25	30.00	-	-	-	-	-	50.00	-	-
Iten	25.00	25.00	26.00	33.75	45.00	50.00	50.00	50.00	50.00	50.00	45.00	41.25
Kabarnet	-	30.00	33.33	44.44	57.22	44.44	-	-	-	-	38.89	-
Kajiado	44.00	49.17	62.50	50.00	58.33	49.17	48.13	62.50	50.00	-	-	50.00
Kakamega	26.25	30.00	32.50	47.50	46.67	33.29	36.86	32.38	31.73	31.19	-	-
Kalundu	25.00	25.00	25.80	29.25	40.00	40.00	-	-	-	40.00	40.00	40.00
Kapsabet	22.65	23.89	24.58	31.00	37.02	38.08	38.73	40.42	40.00	37.92	40.03	39.62
Karatina	24.25	20.01	20.25	24.57	28.48	37.14	43.46	46.00	28.66	46.19	47.62	48.81
Kegonga	21.74	21.74	-	26.09	30.43	-	-	-	-	-	-	40.00
Kehacha	23.19	21.96	22.46	26.09	-	-	-	-	-	40.58	37.44	42.87
Keroka	-	-	-	-	-	-	-	-	-	40.22	40.22	42.57
Kerugoya	32.73	31.85	32.58	44.48	48.81	52.08	65.83	60.42	45.83	41.67	45.83	50.00
Kiambu	45.00	45.00	43.33	-	54.00	-	-	-	45.00	56.25	45.00	48.33
Kianjai	31.48	25.56	23.61	38.89	38.89	38.89	-	-	42.22	47.22	47.22	50.00
Kibirigo	25.00	26.09	26.09	43.48	40.22	-	-	-	-	41.30	41.67	43.48
Kilgoris	-	-	-	-	-	-	-	28.00	24.00	24.00	-	-
Kimulot	24.00	25.00	28.00	32.00	32.00	32.89	36.36	40.00	40.00	40.00	42.00	-
Kipkaren	20.00	21.67	25.00	25.00	41.11	45.00	41.00	40.00	40.00	40.00	35.00	35.00
Kiriaini	-	30.00	30.00	30.00	-	50.00	-	-	-	49.74	48.33	48.33
Kiritiri	27.92	25.84	27.14	26.98	-	-	-	-	-	-	-	-
Kitale	20.83	26.56	25.00	30.42	-	-	-	-	27.13	25.78	33.12	19.81
Kongowea	35.00	35.00	35.00	41.25	49.00	45.00	45.00	45.00	45.00	49.00	47.50	48.33
Kutus	30.88	32.77	28.18	36.90	41.28	57.14	63.81	59.52	59.52	47.99	43.97	43.48
Kwale	46.00	46.25	40.00	42.50	42.00	-	-	-	50.00	-	48.75	50.00
Limuru	42.50	-	45.00	-	-	-	-	-	45.00	67.50	54.00	46.25
Lodwar	56.67	54.29	-	69.58	66.03	50.00	50.00	-	-	-	83.33	60.00
Machakos Town	30.00	30.00	30.00	36.67	50.00	50.00	-	-	50.00	45.00	-	-
Majengo	40.00	50.00	48.75	60.00	60.00	65.00	64.00	60.00	60.00	60.00	63.75	63.75
Makuyu	25.00	30.00	30.00	30.00	-	42.50	-	-	51.32	48.55	48.57	48.59
Marsabit Town	32.50	32.50	41.25	47.50	46.00	-	52.50	52.50	53.50	55.00	-	-
Maua	-	-	-	-	-	-	-	-	-	-	45.00	44.00
Mbale	23.81	25.00	37.14	35.12	38.89	36.51	42.38	41.67	35.71	36.67	38.10	37.50
Migori	35.60	21.74	22.17	27.72	-	-	-	-	-	40.78	44.47	48.48
Mkunguni	50.00	-	-	-	-	-	-	-	-	47.50	60.00	-
Mpeketoni	40.00	-	-	-	-	-	-	-	-	42.50	45.00	-
Mulot	26.00	22.50	21.33	34.00	32.00	38.40	44.00	31.00	28.00	36.80	-	-
Mumias	21.88	25.00	28.13	38.89	41.95	49.42	54.18	21.35	22.87	-	-	-
Mundeta	23.81	23.81	23.81	29.76	40.48	40.00	43.81	41.07	35.71	34.76	38.10	38.10
Muthithi	30.00	28.75	30.00	30.00	-	45.00	-	-	-	46.84	43.99	58.04
Muthurwa Narok	-	-	-	-	-	-	-	35.00	40.00	-	-	-
Mwembe Tayari	50.00	55.00	60.00	65.00	60.00	61.25	65.00	63.75	60.00	61.00	63.75	66.25
Nakuru Town	27.78	27.78	34.72	38.89	47.22	48.33	45.00	35.00	35.00	35.00	37.50	40.00
Nanyuki	33.06	33.34	32.97	42.63	54.95	55.79	54.95	54.50	54.80	54.65	55.56	54.95
Ngiya	42.46	-	-	-	-	-	-	-	31.97	32.76	-	-
Nyabite	25.00	26.09	26.09	45.45	42.29	-	-	-	-	44.47	43.48	43.06
Nyahururu	33.68	27.78	31.85	41.67	49.37	55.25	-	44.44	46.08	50.00	55.56	50.00
Nyeri	22.63	26.79	24.93	29.88	43.67	34.92	39.98	48.27	36.40	46.71	48.81	40.30
Oi Kalou	35.00	37.50	45.00	46.25	53.33	50.00	50.00	43.75	50.00	50.00	50.00	50.00
Oyugis	-	-	-	43.48	-	-	-	-	-	38.89	45.83	45.83
Riochanda	20.83	21.74	-	39.13	39.13	-	-	-	-	40.69	42.07	44.70
Runyenjes	22.73	23.86	20.45	19.32	-	-	-	-	-	-	-	-
Sagana	29.55	35.12	-	-	-	-	-	-	-	-	-	-
Sega	40.00	50.00	58.33	60.00	-	60.00	60.00	-	65.00	-	-	-
Siakago	23.27	23.02	24.00	27.30	-	-	-	-	-	-	-	-
Siaya	35.12	-	-	-	-	-	-	37.50	32.52	-	-	-
Sibanga	-	-	-	-	-	-	-	-	-	21.03	-	24.68
Soko Mjinga	26.09	27.27	-	43.48	40.63	-	38.46	35.42	33.33	50.00	-	-
Sotik	24.00	25.00	27.11	32.00	32.00	34.00	36.80	40.00	38.00	39.20	40.00	-
Tala	30.00	35.00	35.00	35.00	38.00	40.00	-	-	40.00	40.00	-	-
Thika	46.88	31.25	35.83	50.00	50.00	55.00	57.39	-	45.00	67.50	50.00	50.00
Turbo	20.00	20.63	23.75	26.25	40.00	45.00	40.00	40.00	40.00	-	-	35.00
Ukunda	48.75	46.60	47.00	45.00	42.50	-	-	-	49.00	47.50	48.75	49.25
Unguja	34.29	-	-	-	-	-	-	-	35.41	-	-	-
Voi	25.00	25.00	-	-	45.00	45.00	-	-	-	-	-	-
Wote	28.00	28.00	27.50	50.99	41.71	40.00	-	-	45.00	44.33	-	-
Total	31.54	30.59	31.89	38.69	42.71	43.91	46.45	42.14	41.49	43.94	45.93	44.75

Table 9(b): Average Monthly Retail Prices for Dry Maize, 2020 (per Kg)

Market Name	January	February	March	April	May	June	July	August	September	October	November	December
Kiambu	50.0	50.0	50.0	-	-	-	50.0	50.0	56.7	-	-	-
Limuru	45.7	45.0	43.3	-	-	-	50.0	43.8	43.3	39.4	37.5	-
Thika	42.5	40.0	43.3	-	-	-	45.0	36.3	-	41.0	50.0	47.5
Githurai	42.5	43.3	45.0	-	-	-	35.0	35.0	35.0	39.0	40.0	40.0
Gatundu	40.0	40.0	-	-	-	-	45.0	44.5	40.0	40.0	40.0	40.0
Kutus	43.5	40.2	-	-	-	-	-	-	33.3	37.1	36.4	36.4
Kerugoya	43.8	47.6	-	-	-	-	-	-	-	-	34.8	34.8
Muthithi	44.2	-	33.5	-	-	-	-	30.0	30.3	-	-	-
Makuyu	47.7	-	41.9	-	-	-	-	36.8	39.1	-	-	-
Kiraiaini	44.0	-	33.3	-	-	-	-	36.7	33.7	35.4	-	-
Oi Kalou	56.7	62.5	65.0	62.5	60.0	55.0	50.0	50.0	50.0	45.0	50.0	47.5
Ndaragwa	36.7	43.8	37.5	35.0	49.2	48.8	51.0	-	-	-	75.0	45.0
Nyeri	47.7	47.1	47.6	-	-	-	-	-	-	-	-	-
Karatina	47.1	46.0	47.6	-	-	-	-	-	-	-	-	-
Nanyuki	56.2	53.4	46.0	-	-	-	-	-	-	-	-	-
Nyahururu	44.9	44.4	44.4	-	-	-	-	-	-	-	-	-
Ukunda	50.0	49.5	49.0	46.3	43.0	46.3	41.6	40.0	49.0	44.0	42.5	43.0
Kwale	48.0	50.0	50.0	42.5	41.0	47.0	43.0	40.0	47.0	41.0	40.0	47.8
Voi	-	-	-	-	-	-	-	-	-	-	40.0	40.0
Mpeketoni	40.0	-	-	-	-	-	-	-	-	-	-	-
Mkunguni	50.0	-	-	-	-	-	-	-	-	-	-	-
Mwembe Tayari	69.0	65.0	71.3	66.3	65.0	63.8	63.0	63.8	63.8	63.0	60.0	-
Majengo	66.0	68.8	81.7	-	-	-	-	-	60.0	63.0	61.7	-
Sega	70.0	65.0	60.0	70.0	62.0	67.5	62.0	63.8	62.5	68.0	66.3	-
Kongowea	50.0	51.3	46.3	45.0	45.0	45.0	45.0	43.8	41.3	45.0	45.0	-
Runyenyjes	48.6	53.3	63.5	-	71.5	40.7	-	-	-	-	-	-
Embu Town	46.2	46.8	47.6	-	27.9	30.5	-	-	-	-	-	-
Iciara	48.1	59.2	65.2	-	29.1	29.5	-	-	-	-	-	-
Kiritiri	52.9	63.6	71.4	-	76.7	45.2	-	-	-	-	-	-
Siakago	44.2	55.6	71.4	-	-	-	-	-	-	-	-	-
Kalundu	-	30.0	30.0	30.0	35.0	35.0	33.0	32.5	32.5	33.0	40.0	-
Machakos Town	50.0	50.0	43.1	43.0	45.0	-	40.0	40.8	40.0	40.0	50.0	-
Tala	42.0	40.0	-	40.0	40.0	-	35.0	33.0	35.4	37.5	-	-
Maua	41.3	-	-	-	-	-	-	-	-	-	35.0	35.0
Kianjai	44.4	30.6	27.8	-	-	-	-	-	33.3	-	33.3	33.3
Gakoromere	51.4	42.6	33.3	-	-	-	-	-	36.1	38.9	38.9	38.9
Wote	42.0	-	30.0	-	-	35.0	35.0	35.0	35.0	35.0	35.0	35.0
Garissa Town	70.0	66.3	70.0	65.0	66.0	77.5	72.5	70.0	70.0	70.0	70.0	70.0
Wajir Town	100.0	-	100.0	-	-	-	-	100.0	100.0	100.0	100.0	100.0
Isiolo Town	50.0	50.0	50.0	-	-	-	-	-	-	-	38.8	40.0
Daraja Mbili	47.5	-	36.2	39.4	35.6	-	-	-	-	-	-	-
Kibirigo	41.4	-	-	-	-	-	-	-	-	-	-	-
Keroka	41.9	-	-	-	-	-	-	-	-	-	-	-
Riochanda	41.9	-	-	-	-	-	-	-	-	30.4	28.0	-
Nyabite	-	-	-	-	-	-	-	-	-	43.5	-	-
Kibuye	40.8	41.3	40.1	41.8	41.3	44.0	43.0	39.1	36.2	34.9	36.4	36.2
Ahero	39.3	37.6	40.1	41.7	42.4	43.3	41.2	33.8	34.2	33.9	34.7	34.7
Kiboswa	37.4	33.5	36.4	41.8	39.5	37.7	38.7	38.4	35.3	35.7	34.8	34.8
Sondu	39.7	37.5	38.8	44.5	43.1	42.3	42.4	34.4	34.8	34.2	34.8	34.6
Kegonga	31.7	23.0	-	-	-	-	-	-	-	-	-	29.3
Oyugis	-	-	34.7	44.0	42.4	40.0	34.5	33.0	32.0	28.0	28.0	28.5
Kehacha	35.8	26.0	-	-	-	-	-	-	-	-	25.6	26.2
Migori	44.2	38.2	-	-	-	-	-	-	-	23.7	30.1	29.6
Soko Mjinga	43.5	-	40.3	41.7	-	-	-	-	-	-	-	34.1
Lodwar	77.3	-	-	-	-	-	-	-	-	-	91.7	77.4
Kabarnet	35.0	-	-	-	-	-	44.4	39.9	33.5	30.0	30.0	30.0
Kimulot	44.0	44.0	-	-	-	-	-	-	-	37.5	33.0	32.0
Sotik	40.0	40.0	-	-	-	-	-	-	-	37.0	37.0	36.0
Bomet	42.0	40.0	-	-	-	-	-	-	-	36.0	38.0	36.0
Nakuru Town	43.3	45.0	45.0	-	-	-	-	41.5	57.5	45.0	43.3	40.0
Kapsabet	38.5	38.0	38.0	-	-	-	-	35.8	28.3	25.5	28.1	-
Chepsonoi	37.3	39.6	40.0	-	-	-	-	36.4	27.9	25.6	28.0	-
Mulot	44.0	40.0	-	-	-	-	-	-	-	33.5	31.5	32.0
Kitale	41.4	41.7	41.7	41.7	41.7	41.7	41.3	40.6	41.5	37.0	27.4	34.1
Endebess	34.1	32.8	33.3	32.8	33.3	-	-	-	-	-	-	-
Sibanga	42.8	41.5	38.5	35.0	40.3	-	-	-	-	-	-	-
Eldoret	-	40.0	40.0	40.0	40.0	43.8	49.0	42.5	40.0	38.0	36.3	-
Burn Forest	35.0	35.0	28.0	36.0	36.0	36.0	36.0	39.0	29.0	25.2	21.5	-
Turbo	-	35.0	35.6	38.1	35.0	38.1	46.0	42.5	40.0	35.5	30.0	-
Kipkaren	-	35.0	35.6	36.9	35.0	38.8	47.0	45.0	40.0	35.0	31.9	-
Iten	34.6	-	-	-	-	-	-	45.0	-	-	-	-
Kajiado	50.0	45.0	44.5	45.8	44.0	41.3	48.0	52.0	50.0	50.0	51.3	48.8
Bungoma Town	-	-	-	-	-	60.2	43.8	32.8	29.0	28.6	29.4	30.4
Bumala	-	-	-	-	-	-	76.7	76.3	75.0	70.0	70.0	75.0
Busia Town	-	-	-	-	-	-	81.7	78.8	75.0	70.0	71.3	72.5
Sio Port	-	-	-	-	-	-	80.0	77.5	77.5	70.0	70.0	76.3
Butere	-	-	33.0	41.7	34.3	39.1	30.7	28.0	25.7	25.2	26.0	-
Kakamega	-	-	39.5	42.3	41.9	36.9	33.5	26.4	29.3	29.6	29.3	-
Mumias	-	-	33.4	38.5	40.9	38.4	28.6	25.6	24.0	25.8	28.1	-
Mundeta	39.7	38.1	-	-	-	-	-	-	-	-	-	-
Cheptula	39.5	40.5	38.9	-	-	-	-	-	-	-	-	-
Mbale	37.6	37.3	38.1	-	-	-	-	-	-	-	-	-
Muthurwa	-	-	-	-	-	-	-	-	-	-	47.6	47.6
Gikomba	-	-	-	-	-	-	-	-	38.1	-	47.6	47.6
Korokocho	-	-	-	-	-	-	42.1	-	36.4	-	36.4	-
Kayole	-	-	-	-	-	-	44.4	-	40.0	38.1	40.0	38.1
Total	44.8	44.6	43.6	43.5	44.6	44.1	44.4	42.1	41.6	39.5	40.9	41.5

Table 9(C): Average Monthly Retail Prices for Dry Beans, 2019 (per Kg)

	January	February	March	April	May	June	July	August	September	October	November	December
Akala	-	-	-	-	-	-	-	-	76.07	80.01	-	-
Bomet	72.12	71.79	71.79	71.79	74.87	74.62	73.59	73.40	67.31	69.74	70.51	-
Bondo	84.90	-	-	-	-	-	-	-	-	-	-	-
Bumala	128.57	-	-	-	-	104.76	102.86	83.33	70.07	119.05	-	138.10
Bura Tana	-	100.00	100.00	95.00	-	-	-	-	-	-	-	-
Burn Forest	90.00	90.00	90.00	92.50	106.25	125.00	112.50	100.00	100.00	100.00	100.00	100.00
Busia Town	-	-	-	-	-	95.24	92.64	79.89	119.05	133.33	-	135.24
Butere	80.68	65.91	104.55	111.36	117.88	97.90	104.69	98.29	117.01	118.96	-	-
Chepsonoi	83.43	82.58	86.46	90.50	110.78	108.85	116.34	115.67	-	111.85	104.49	93.51
Cheptula	72.40	71.59	72.73	85.23	92.42	95.45	93.64	90.91	90.91	95.45	107.95	90.91
Chuka Town	-	-	-	-	-	-	-	-	-	108.11	83.33	111.11
Daraja Mbili	58.57	62.35	70.42	96.07	104.80	88.17	91.70	87.32	84.51	84.49	92.56	96.37
Eldoret	90.00	90.00	92.50	100.00	113.75	125.00	113.00	100.00	100.00	100.00	100.00	100.00
Embu Town	52.17	59.44	54.35	52.17	-	-	-	-	-	-	-	-
Endebess	52.59	60.10	58.04	53.57	-	-	-	-	-	66.91	71.09	39.83
Engare	-	-	-	-	-	-	-	60.00	74.00	80.00	-	-
Gakoromere	71.33	66.67	66.67	80.00	100.00	96.83	-	-	100.00	98.18	90.00	90.00
Garissa Town	88.89	81.67	81.67	81.67	99.00	103.33	97.50	96.00	98.00	103.33	-	100.00
Garsen	80.00	80.00	80.00	85.71	100.00	80.00	80.00	80.00	80.00	80.00	86.67	100.00
Gatundu	94.44	51.67	41.67	95.00	-	-	-	-	93.33	84.96	110.00	110.00
Githurai	85.71	75.00	51.67	96.00	98.33	101.21	57.28	-	80.00	85.65	97.09	81.67
Hola	-	100.00	100.00	100.00	120.00	102.86	100.00	100.00	100.00	100.00	100.00	-
Iciara	60.98	65.96	65.22	67.39	-	-	-	-	-	-	-	-
Isiolo Town	76.67	56.67	52.50	60.00	-	-	-	-	-	94.00	-	-
Iten	100.00	100.00	100.00	106.25	125.00	100.00	108.33	63.89	50.00	50.00	100.00	100.00
Kabarnet	-	88.89	100.00	111.11	94.72	111.11	-	-	-	-	100.00	-
Kajiado	108.65	99.69	100.00	93.33	112.22	112.03	103.08	100.00	93.33	-	-	91.11
Kakamega	90.91	92.73	100.00	117.05	107.27	109.86	123.68	115.53	115.60	123.86	-	-
Kalundu	77.50	75.00	72.73	80.00	102.50	95.00	-	-	-	112.50	107.50	105.00
Kapsabet	81.04	86.62	86.99	90.02	100.92	112.92	109.85	114.13	137.99	116.03	98.86	95.88
Karatina	81.65	80.27	88.29	87.09	68.69	85.55	88.35	86.06	71.70	90.70	87.08	94.07
Kegonga	84.00	72.00	-	76.00	96.00	-	-	-	-	-	-	84.62
Kehacha	68.46	74.27	78.67	92.00	-	-	-	-	-	107.44	75.02	79.38
Keroka	-	-	-	-	-	-	-	-	-	87.72	68.18	86.66
Kerugoya	54.98	55.20	51.36	58.22	64.47	76.56	82.50	61.46	43.75	60.83	66.67	75.00
Kiambu	81.67	76.44	70.00	-	89.78	-	-	-	69.88	88.59	94.11	84.30
Kianjai	62.96	54.44	51.39	77.78	80.56	77.78	-	-	85.19	100.00	94.44	100.00
Kibirigo	72.73	90.91	100.00	100.00	108.89	-	-	-	-	81.82	88.74	77.27
Kilgoris	-	-	-	-	-	-	-	98.00	96.00	96.00	-	-
Kimulot	64.00	65.50	68.62	70.00	70.00	71.33	72.91	63.50	60.25	66.15	-	-
Kipkaren	82.50	90.00	90.00	92.50	106.67	117.50	110.00	100.00	100.00	100.00	100.00	100.00
Kiriaini	-	70.00	71.00	70.00	-	75.00	-	-	-	72.95	68.65	64.42
Kintiri	63.86	65.28	64.88	66.70	-	-	-	-	-	-	-	-
Kitale	78.33	83.33	83.33	81.67	-	-	-	-	66.67	72.75	83.57	42.33
Kongowea	66.00	65.00	80.00	80.00	98.00	90.00	100.00	100.00	100.00	100.00	100.00	100.00
Kutus	67.99	64.57	65.81	73.91	67.75	65.22	52.17	43.48	47.83	60.87	68.13	69.57
Kwale	78.00	78.75	77.50	80.00	80.00	-	-	-	90.00	-	87.50	92.50
Limuru	78.64	-	80.00	-	-	-	-	-	70.21	90.97	91.34	94.48
Lodwar	91.67	83.33	-	93.75	118.06	110.42	100.00	-	-	-	125.00	128.33
Machakos Town	75.00	80.00	80.00	80.00	100.00	100.00	-	-	100.00	100.00	-	-
Mackinnon	100.00	100.00	100.00	100.00	112.00	122.50	128.00	130.00	130.00	128.00	123.33	117.50
Majengo	80.00	70.00	80.00	80.00	82.00	120.00	126.00	115.00	107.50	120.00	115.00	107.50
Makuyu	70.00	65.00	65.00	70.00	-	71.29	-	-	71.43	70.29	69.81	66.83
Marsabit Town	65.00	65.00	77.50	85.00	92.00	-	96.25	98.75	95.00	100.00	-	-
Maua	-	-	-	-	-	-	-	-	-	-	90.00	90.00
Mbale	84.09	84.85	83.64	86.36	100.76	95.45	100.00	111.99	96.59	94.50	113.64	96.59
Migori	71.49	69.35	71.11	84.27	-	-	-	-	-	110.42	106.72	100.07
Mkunguni	120.00	-	-	-	-	-	-	-	-	115.00	120.00	-
Mpeketoni	120.00	-	-	-	-	-	-	-	-	110.00	100.00	-
Mulot	64.10	64.00	62.82	71.96	74.36	73.08	76.15	62.50	57.05	65.38	-	-
Mumias	79.55	77.27	109.09	112.12	113.81	131.25	132.50	114.24	113.80	-	-	-
Mundeta	68.18	68.90	72.55	90.91	102.27	102.73	91.82	88.64	90.91	90.91	90.91	98.48
Muthithi	75.00	68.75	66.67	75.00	-	67.39	-	-	-	70.47	66.76	68.30
Muthurwa Narok	-	-	-	-	-	-	-	80.00	82.00	-	-	-
Mwembe Tayari	80.00	80.00	115.00	85.00	116.00	120.00	120.00	125.00	105.00	122.00	120.00	115.00
Nakuru Town	61.48	62.22	62.22	66.11	67.94	66.60	65.00	65.00	65.00	61.25	60.00	60.00
Nanyuki	77.56	77.14	78.21	95.19	110.10	109.65	112.58	117.80	115.97	121.22	119.05	118.35
Ngiya	83.39	-	-	-	-	-	-	-	69.97	69.23	-	-
Nyabite	77.27	72.73	79.55	95.65	111.36	-	-	-	-	98.11	103.79	84.41
Nyahururu	84.10	77.78	77.35	77.78	110.76	111.11	-	108.70	111.11	95.65	112.36	111.11
Nyeri	78.74	77.40	86.52	83.49	79.37	76.99	88.58	92.68	76.92	81.64	92.74	97.95
Oi Kalou	101.67	102.50	100.00	100.00	83.33	100.00	100.00	107.14	100.00	100.00	93.75	100.00
Oyugis	-	-	-	79.20	-	-	-	-	-	91.42	102.88	85.11
Riochanda	67.05	83.33	-	113.64	77.27	-	-	-	-	67.79	76.27	90.91
Runyenges	59.09	60.38	60.87	63.04	-	-	-	-	-	-	-	-
Sagana	65.37	80.43	-	-	-	-	-	-	-	-	-	-
Sega	65.00	72.50	80.00	80.00	120.00	120.00	122.00	125.00	127.50	120.00	117.50	123.33
Siakago	63.86	63.86	64.57	66.70	-	-	-	-	-	-	-	-
Siaya	86.40	-	-	-	-	-	-	-	65.96	-	-	-
Sibanga	-	-	-	-	-	-	-	-	-	75.28	-	46.92
Soko Mjinga	71.79	72.06	-	85.01	94.23	-	94.08	94.12	98.08	40.00	-	-
Sotik	64.00	65.50	68.67	70.00	70.00	75.50	74.00	59.50	52.00	64.84	68.31	-
Tala	70.00	70.00	70.00	70.00	78.00	80.00	-	-	80.00	80.00	-	-
Thika	80.15	64.17	73.33	97.22	94.50	86.55	75.46	-	86.67	97.92	85.42	100.00
Turbo	85.00	86.25	90.00	97.50	106.25	121.25	109.00	100.00	100.00	-	-	100.00
Ukunda	90.00	84.00	82.00	80.00	77.50	-	-	-	85.00	92.50	92.50	92.50
Unguja	87.11	-	-	-	-	-	-	-	79.79	-	-	-
Voi	86.67	80.26	-	-	102.00	95.00	-	-	-	-	-	-
Wote	76.00	71.00	77.50	78.75	100.00	100.00	-	-	95.00	97.78	-	-
Total	77.99	75.04	77.01	83.05	89.62	92.30	89.26	85.71	81.57	86.12	89.88	89.54

Table 9(d): Average Monthly Retail Prices for Dry Beans, 2020 (per Kg)

Market Name	January	February	March	April	May	June	July	August	September	October	November	December
Kiambu	88.3	43.3	101.1	-	-	-	105.3	109.7	113.3	-	-	-
Limuru	91.6	97.0	94.3	-	-	-	-	-	70.8	95.0	95.0	-
Thika	85.2	88.3	94.3	-	-	-	101.7	98.3	103.3	99.0	94.2	90.0
Githurai	82.4	76.1	78.9	-	-	-	97.5	102.2	105.0	99.5	95.0	95.0
Gatundu	107.4	111.7	-	-	-	-	99.3	95.0	93.3	94.0	95.0	95.0
Kutus	72.2	75.0	-	-	-	-	-	-	81.8	90.4	91.3	87.0
Kerugoya	78.2	86.4	-	-	-	-	-	-	-	-	77.2	78.3
Muthithi	65.9	-	69.5	-	-	-	-	74.2	75.1	-	-	-
Makuyu	66.7	-	66.8	-	-	-	-	-	73.3	87.6	-	-
Kiriaini	67.2	-	68.4	-	-	-	-	-	78.5	81.8	-	-
Oi Kalou	61.9	59.5	60.0	60.0	60.0	74.4	61.0	55.0	51.7	53.3	80.0	103.3
Ndaragwa	50.0	58.8	95.7	95.0	101.8	84.6	68.2	-	-	-	120.0	111.0
Nyeri	101.7	108.1	89.3	-	-	-	-	-	-	-	-	-
Karatina	98.5	105.3	102.9	-	-	-	-	-	-	-	-	-
Nanyuki	124.0	113.7	111.1	-	-	-	-	-	-	-	-	-
Nyahururu	107.7	111.1	109.9	-	-	-	-	-	-	-	-	-
Ukunda	105.0	100.0	100.0	80.0	66.0	85.0	80.0	62.5	82.5	77.0	72.5	78.8
Kwale	100.0	100.0	100.0	80.0	64.0	90.0	80.0	60.0	77.5	80.0	80.0	82.5
Voi	-	-	-	-	-	-	-	-	-	-	108.3	110.0
Mpeketoni	100.0	-	-	-	-	-	-	-	-	-	-	-
Mkunguni	120.0	-	-	-	-	-	-	-	-	-	-	-
Mwembe Tayari	144.0	147.5	162.5	150.0	158.0	132.5	136.0	135.0	125.0	126.0	120.0	-
Majengo	119.0	120.0	108.0	100.0	100.0	100.0	100.0	100.0	103.3	98.0	106.7	-
Mackinon	120.0	120.0	120.0	120.0	-	-	-	-	120.0	120.0	120.0	-
Sega	111.7	117.5	120.0	102.5	116.0	115.0	112.0	112.5	107.5	110.0	115.0	-
Kongowea	99.0	91.3	78.8	105.0	110.0	102.5	100.0	87.5	85.0	90.0	100.0	-
Hola	-	-	-	-	-	-	-	-	-	120.0	120.0	-
Garsen	-	-	-	-	-	-	-	-	100.0	100.0	100.0	100.0
Runyenyjes	75.3	98.3	116.3	-	107.0	97.6	-	-	-	-	-	-
Embu Town	130.6	114.6	95.2	-	100.1	95.2	-	-	-	-	-	-
Iciara	128.4	140.7	146.4	-	111.2	102.9	-	-	-	-	-	-
Kiritiri	103.4	114.0	119.0	-	101.8	95.6	-	-	-	-	-	-
Siakago	87.6	95.3	93.1	-	-	-	-	-	-	-	-	-
Kalundu	-	105.0	105.0	106.3	114.0	113.8	108.0	100.0	103.8	90.5	105.0	-
Machakos Town	100.0	100.0	85.0	88.0	100.0	-	120.0	111.7	112.9	116.0	120.0	-
Tala	82.0	70.0	-	70.0	70.0	-	100.0	90.0	100.0	115.0	-	-
Maua	90.0	-	-	-	-	-	-	-	-	-	80.0	80.0
Kianjai	79.2	72.2	72.2	-	-	-	-	-	77.8	-	88.9	84.7
Gakromere	75.0	80.0	80.0	-	-	-	-	-	80.0	90.0	90.0	90.0
Wote	113.3	-	87.5	-	-	100.0	100.0	100.0	100.0	100.0	100.0	100.0
Garissa Town	102.7	103.3	103.3	113.3	125.3	126.7	125.7	126.7	126.7	124.0	113.3	111.7
Wajir Town	120.0	-	120.0	-	-	-	-	120.0	120.0	120.0	120.0	120.0
Isiolo Town	85.0	80.0	80.0	-	-	-	-	-	-	-	95.0	85.0
Daraja Mbili	94.0	-	115.2	110.9	120.5	-	-	-	-	-	-	-
Kibirigo	89.7	-	-	-	-	-	-	-	-	-	-	-
Keroka	83.3	-	-	-	-	-	-	-	-	-	-	-
Riochanda	75.0	-	-	-	-	-	-	-	-	90.9	87.5	-
Nyabite	-	-	-	-	-	-	-	-	-	138.7	-	-
Kibuye	75.7	75.4	77.9	80.6	83.3	74.9	90.0	79.2	101.4	100.0	107.8	109.0
Ahero	75.5	78.3	79.9	82.6	86.6	86.1	93.0	82.0	103.3	103.5	108.6	108.8
Kiboswa	75.1	63.9	74.5	77.4	77.1	80.9	77.5	78.6	96.5	97.9	105.7	108.3
Sondu	77.0	78.3	79.3	79.2	82.4	84.8	95.7	82.6	104.3	104.3	105.3	104.5
Kegonga	91.0	84.0	-	-	-	-	-	-	-	-	-	84.2
Oyugis	-	-	106.2	139.1	114.4	110.0	92.5	76.0	76.0	82.0	78.0	99.6
Kehacha	83.5	88.0	-	-	-	-	-	-	-	-	86.4	88.0
Migori	109.8	110.5	-	-	-	-	-	-	-	115.5	120.3	105.4
Soko Mjinga	96.1	-	98.1	108.5	-	-	-	-	-	-	-	90.3
Lodwar	98.4	-	-	-	-	-	-	-	-	-	83.3	91.7
Kabarnet	91.7	-	-	-	-	-	120.0	105.0	115.0	119.0	110.0	100.0
Kimulot	79.0	76.0	-	-	-	-	-	-	-	83.5	85.5	84.0
Sotik	78.9	76.3	-	-	-	-	-	-	-	96.2	90.9	93.7
Bomet	83.3	83.3	-	-	-	-	-	-	-	73.1	108.7	111.5
Nakuru Town	60.0	60.0	60.0	-	-	-	-	67.1	60.0	60.0	64.4	60.0
Kapsabet	98.7	94.8	111.2	-	-	-	-	112.7	113.7	116.4	111.1	-
Chepsonoi	98.8	97.7	83.3	-	-	-	-	113.3	115.9	116.0	114.9	-
Mulot	76.3	76.9	-	-	-	-	-	-	-	78.1	75.0	73.1
Kitale	70.6	72.1	72.6	88.9	82.3	103.6	95.6	95.8	103.7	103.6	81.7	90.3
Endebess	50.9	59.9	63.9	64.2	66.7	-	-	-	-	-	-	-
Sibanga	62.5	63.7	67.8	77.7	68.8	-	-	-	-	-	-	-
Eldoret	-	122.5	125.0	125.0	133.0	133.8	138.0	128.8	108.8	132.5	132.5	-
Burn Forest	130.3	136.4	131.8	143.2	140.9	131.8	140.9	136.4	134.1	132.7	138.6	-
Turbo	-	110.0	111.3	125.0	144.0	142.5	140.0	128.8	106.3	134.0	135.0	-
Kipkaren	-	116.3	125.0	126.3	145.0	140.0	140.0	128.0	107.5	131.0	140.0	-
Iten	100.0	-	-	-	-	-	-	-	100.0	-	-	-
Kajiado	94.7	106.7	113.3	113.3	113.3	113.3	117.3	116.7	115.0	112.0	114.2	114.2
Bungoma Town	-	-	-	-	-	117.7	97.2	99.7	103.0	91.6	91.6	90.2
Bumala	-	-	-	-	-	-	-	-	-	-	-	135.0
Busia Town	-	-	-	-	-	-	-	-	-	-	-	125.0
Sio Port	-	-	-	-	-	-	-	-	-	-	-	132.5
Butere	-	-	119.3	123.8	107.8	108.3	122.2	126.7	81.9	102.2	97.8	-
Kakamega	-	-	162.0	175.9	150.3	136.1	114.9	97.3	91.2	90.4	85.4	-
Mumias	-	-	127.9	147.1	119.7	110.0	108.9	116.9	104.9	102.3	106.5	-
Mundeta	90.9	92.0	90.9	-	-	-	-	-	-	-	-	-
Cheptula	90.9	97.0	95.5	-	-	-	-	-	-	-	-	-
Mbale	100.0	106.1	98.5	-	-	-	-	-	-	-	-	-
Muthurwa	-	-	-	-	-	-	-	-	-	-	104.3	104.3
Gikomba	-	-	-	-	-	-	-	-	72.7	-	104.3	104.3
Korokocho	-	-	-	-	-	-	80.0	-	66.7	-	75.0	-
Kayole	-	-	-	-	-	-	80.0	-	80.0	80.0	80.0	72.7
Total	88.9	91.5	96.0	104.6	104.7	103.2	99.0	95.5	96.1	98.5	98.9	98.7

Table 10: Exports of Coffee and Tea

Month	COFFEE *		TEA	
	Quantity (MT)	Value '(KSh. Million)	Quantity (MT)	Value '(KSh. Million)
2019				
January.....	3,469.39	1,498.72	48,622.81	11,831.30
February.....	4,567.37	1,903.18	41,026.62	9,638.24
March.....	4,351.34	2,256.18	42,457.17	9,910.41
April.....	4,551.54	2,500.94	36,883.92	8,630.54
May.....	5,489.90	2,699.81	36,993.68	9,292.80
June.....	4,548.70	1,963.94	29,355.17	7,154.11
July.....	5,115.45	1,713.18	33,657.14	7,788.40
August.....	3,931.89	1,461.51	41,275.96	9,458.09
September.....	3,144.73	1,112.65	36,325.07	8,462.91
October.....	3,985.76	1,390.06	45,373.90	11,064.77
November.....	3,664.41	1,175.66	43,650.47	10,735.39
December.....	1,905.94	633.74	39,312.40	9,483.99
2020				
January.....	2,639.38	985.32	48,770.49	11,452.01
February.....	3,168.50	1,686.82	47,569.72	11,021.86
March.....	4,604.42	2,410.16	51,440.71	11,665.48
April.....	4,395.52	2,590.20	57,722.34	13,192.62
May.....	4,312.75	2,279.12	48,594.07	11,289.33
June.....	5,414.08	2,956.33	46,399.01	10,293.00
July.....	3,546.25	1,799.26	46,850.57	10,013.82
August.....	3,181.82	1,484.15	47,034.93	10,269.11
September.....	3,391.49	1,606.84	44,724.70	10,199.89
October.....	2,732.15	1,322.08	43,655.91	9,937.34
November.....	3,594.29	1,836.61	46,352.88	10,610.96
December.....	2,405.44	1,284.84	46,166.69	10,300.58

Source: KRA Customs and Border Control Services department

* Coffee, not Roasted

MT denotes Metric tonnes

Table 11: Monthly Exports of Fresh Horticultural Produce

Months	Cut Flowers				FRUITS				VEGETABLES			
	2019		2020*		2019		2020*		2019		2020*	
	Quantity (MT)	Value (KSh Million)	Quantity (MT)	Value (KSh Million)	Quantity (MT)	Value (KSh Million)	Quantity (MT)	Value (KSh Million)	Quantity (MT)	Value (KSh Million)	Quantity (MT)	Value (KSh Million)
January	15,585.32	9,939.87	14,641.68	12,601.45	3,241.48	507.45	6,340.04	1,076.00	9,794.17	2,503.41	4,831.56	2,355.89
February	17,865.75	10,914.69	17,561.80	11,906.32	8,564.62	1,236.09	8,370.27	1,044.26	7,016.72	1,869.56	4,809.10	1,983.31
March	16,463.44	8,861.73	10,438.01	13,986.50	12,183.15	1,757.85	11,433.30	1,683.33	5,357.63	1,826.03	5,585.21	2,338.23
April	15,581.04	9,960.00	7,989.41	8,608.37	10,403.68	1,542.81	11,671.61	1,640.06	5,149.66	2,171.14	4,839.67	1,664.25
May	15,337.77	9,384.86	10,215.07	6,254.05	8,915.77	1,152.12	13,492.51	5,642.88	5,275.12	1,810.50	4,281.66	2,176.03
June	11,744.03	6,137.83	9,373.96	5,355.97	7,038.09	1,201.85	10,367.69	1,431.74	5,770.09	3,746.19	4,678.09	1,741.78
July	11,074.20	6,187.88	10,928.54	7,154.41	8,546.38	1,556.23	9,990.93	1,424.36	5,218.74	1,736.80	4,547.00	1,819.98
August	12,599.63	7,818.28	11,497.87	7,973.86	6,409.13	1,158.65	8,874.50	1,286.90	5,312.26	2,173.38	4,561.09	1,708.51
Sept	14,155.64	6,611.52	12,878.04	10,508.44	4,039.75	522.83	6,250.47	990.26	5,061.47	2,602.52	5,405.00	1,910.75
October	15,105.53	7,913.55	14,480.13	7,472.94	4,684.22	913.66	7,073.45	889.94	6,003.68	1,996.43	6,274.31	2,169.66
Nov	15,365.86	8,575.51	12,873.18	10,253.09	4,122.71	810.09	5,960.36	690.89	6,500.21	2,444.94	5,700.07	2,009.31
Dec	12,841.07	11,836.04			3,733.84	829.42			6,273.72	2,366.88		
Total	173,719.30	104,141.75	132,877.69	102,075.40	81,882.81	13,189.04	99,825.14	17,800.61	72,733.46	27,247.79	55,512.76	21,877.69

Source: Horticultural Directorate

* Provisional

Table 12: External Trade

	KSh Million					
Month	Domestic Exports	Re-Exports	Total Exports	Total Imports	Volume of Trade	Home use Imports
2019						
January.....	46,361.88	6,927.94	53,289.83	155,919.71	209,209.53	140,661.13
February.....	44,521.57	6,398.23	50,919.80	142,268.55	193,188.36	139,034.00
March.....	46,599.76	6,061.47	52,661.23	125,251.46	177,912.69	120,814.40
April.....	43,355.21	5,457.39	48,812.60	150,152.21	198,964.80	137,085.27
May.....	39,682.45	6,784.17	46,466.63	155,836.63	202,303.26	148,047.07
June.....	45,770.66	5,417.80	51,188.46	149,439.25	200,627.71	135,889.13
July.....	40,545.84	9,673.60	50,219.44	153,590.24	203,809.68	147,930.12
August.....	44,613.61	5,036.31	49,649.92	145,504.24	195,154.16	129,128.41
September.....	40,097.68	6,390.00	46,487.67	149,374.73	195,862.41	118,301.87
October.....	45,454.91	5,638.55	51,093.46	159,175.40	210,268.86	117,223.45
November.....	43,823.22	7,992.22	51,815.44	159,187.99	211,003.43	153,338.58
December.....	38,663.20	4,111.59	42,774.80	155,261.58	198,036.38	142,803.74
2020*						
January.....	47,324.80	5,801.50	53,126.30	155,432.97	208,559.27	145,663.40
February.....	47,900.33	13,205.92	61,106.25	133,824.66	194,930.91	126,980.05
March.....	49,652.97	14,830.75	64,483.72	137,240.93	201,724.65	104,004.63
April.....	40,675.66	2,537.29	43,212.94	119,758.20	162,971.15	100,367.05
May.....	41,800.44	5,398.51	47,198.95	108,699.14	155,898.09	104,957.03
June.....	44,520.97	3,528.33	48,049.30	121,602.01	169,651.31	119,885.40
July.....	45,695.71	6,304.59	52,000.30	138,761.11	190,761.41	136,026.07
August.....	49,502.50	4,660.60	54,163.10	137,775.57	191,938.67	137,350.10
September.....	48,536.58	7,870.26	56,406.84	143,391.27	199,798.11	140,485.82
October.....	49,319.22	3,842.81	53,162.02	145,238.48	198,400.51	140,564.71
November.....	47,390.54	3,398.24	50,788.79	139,042.14	189,830.93	132,791.54
December.....	52,299.28	5,209.71	57,508.99	161,455.69	218,964.68	157,227.72

Source: Kenya Revenue Authority

+ Revised

*Provisional

Table 13(a): Major Destinations of Domestic Exports

KSh Million											
Month/Country	Uganda	Tanzania	United Kingdom	Pakistan	Netherlands	Egypt	Germany	Rwanda	USA	United Arab Emirates	France
2019											
January.....	4,344.70	2,113.06	4,418.99	4,411.96	4,650.98	2,068.80	895.63	1,043.44	3,732.43	1,928.94	625.27
February.....	4,353.75	2,056.67	3,720.80	4,289.18	4,902.82	1,454.58	1,233.55	1,269.53	3,305.64	1,464.84	602.51
March.....	4,507.33	2,173.74	3,700.36	4,293.95	4,824.51	1,726.32	1,033.20	1,570.68	3,905.57	1,577.08	656.98
April.....	4,107.53	2,458.48	2,698.56	3,764.79	3,486.03	1,648.32	1,262.31	1,504.01	5,172.36	1,314.89	593.37
May.....	4,118.12	2,401.50	1,986.88	3,455.38	2,580.28	1,701.92	1,137.93	1,872.06	4,183.06	1,406.20	449.67
June.....	4,588.50	2,309.43	3,846.54	2,479.45	5,369.68	1,398.00	984.07	1,771.74	4,298.75	1,869.05	715.91
July.....	4,549.48	2,400.52	3,537.36	3,188.46	2,813.01	805.22	780.57	2,150.33	4,309.96	1,442.26	869.80
August.....	3,861.65	2,614.71	3,286.52	3,192.87	3,461.32	1,982.59	850.35	2,290.21	4,471.23	1,493.82	748.25
September.....	5,149.08	2,476.31	2,551.67	3,359.04	2,816.54	1,463.09	760.23	2,001.97	5,254.28	1,330.89	526.55
October.....	4,939.82	2,926.50	3,418.57	4,537.53	3,745.47	1,788.22	790.31	2,073.30	3,719.32	1,494.80	652.30
November.....	4,572.77	2,366.80	3,530.24	4,235.12	3,417.52	1,730.74	715.81	2,097.92	4,480.66	1,526.76	593.60
December.....	4,014.14	2,150.54	2,995.59	3,841.33	2,932.57	1,043.18	717.08	1,943.82	3,249.09	1,716.99	509.01
2020*											
January.....	3,709.11	2,369.38	4,050.58	4,193.52	3,855.89	2,152.66	919.27	1,534.50	4,664.67	2,112.66	486.10
February.....	5,275.30	2,105.73	4,914.40	4,586.76	4,633.00	1,658.73	1,251.99	1,851.74	3,467.86	2,059.26	450.65
March.....	5,332.22	2,894.28	4,266.20	4,654.94	4,003.95	1,597.23	1,276.14	2,269.51	3,693.21	1,648.62	602.84
April.....	2,290.71	1,981.76	4,413.58	5,558.22	2,784.69	1,367.24	1,427.26	866.42	2,949.42	1,871.26	840.73
May.....	3,613.15	1,837.64	3,848.13	5,137.95	3,372.75	1,412.17	1,293.18	1,280.15	2,866.05	1,415.22	722.16
June.....	4,349.66	1,899.77	3,820.66	4,221.27	2,609.82	1,604.56	989.03	1,936.60	5,091.41	1,214.39	819.70
July.....	5,663.36	2,598.34	4,040.28	4,099.59	3,070.10	1,290.26	1,031.01	2,370.08	3,588.08	1,367.54	912.55
August.....	6,399.79	2,572.96	3,821.02	5,136.91	3,401.57	658.66	1,231.58	2,524.04	5,346.14	1,339.46	963.24
September.....	6,386.83	2,681.66	4,126.01	3,970.74	3,295.61	1,696.98	1,251.17	2,168.05	3,775.68	1,653.71	916.74
October.....	5,322.72	2,640.28	3,917.36	4,003.78	5,230.07	1,764.74	1,040.20	2,329.39	4,578.11	1,686.60	581.82
November.....	4,421.78	2,777.85	3,899.39	4,838.67	3,751.75	1,477.93	1,003.65	2,305.75	4,518.63	1,458.23	677.08
December.....	6,437.79	3,110.31	4,391.66	4,063.96	4,558.36	2,052.45	1,059.75	2,255.96	3,665.78	1,356.79	717.01

Source: Kenya Revenue Authority

*Provisional

Table 13(b): Domestic Exports by Broad Economic Category

Descriptions	Value in KSh Million												
	2019	2020*											
	Dec	Jan	Feb	March	April	May	Jun	Jul	Aug	Sep	Oct	Nov	Dec
Food and beverages.....	16,832.43	20,534.47	20,579.64	23,783.29	24,122.52	21,886.63	21,993.41	21,049.33	21,397.98	21,056.62	21,587.21	21,659.27	22,473.85
Industrial supplies (Non-Food)	9,492.32	13,810.43	11,313.14	11,508.22	6,958.79	8,782.75	11,731.48	10,184.49	13,177.60	11,843.88	11,662.55	10,792.35	12,492.37
Fuel and Lubricants.....	318.47	488.81	726.13	239.62	314.26	298.00	248.77	736.20	661.85	507.02	796.17	268.54	520.79
Machinery & other capital Equipment.....	556.79	598.76	795.55	980.09	411.17	839.18	547.94	1,036.47	770.22	1,288.08	809.33	599.61	756.87
Transport equipment.....	738.94	408.74	361.51	790.50	204.14	241.93	270.87	350.72	347.32	498.90	401.72	526.54	490.81
Consumer goods Not elsewhere specified....	10,724.26	11,482.04	14,124.36	12,351.25	8,664.77	9,751.95	9,728.49	12,338.49	13,136.52	13,342.08	14,062.24	13,539.23	15,564.59
Goods not elsewhere specified.....	-	1.55	-	-	-	-	-	-	11.01	-	-	5.00	-
Total	38,663.20	47,324.80	47,900.33	49,652.97	40,675.66	41,800.44	44,520.97	45,695.71	49,502.50	48,536.58	49,319.22	47,390.54	52,299.28
Percentage Shares:													
Food and Beverages	43.54	43.39	42.96	47.90	59.30	52.36	49.40	46.06	43.23	43.38	43.77	45.70	42.97
Industrial Supplies (Non-Food).....	24.55	29.18	23.62	23.18	17.11	21.01	26.35	22.29	26.62	24.40	23.65	22.77	23.89
Fuel and Lubricants	0.82	1.03	1.52	0.48	0.77	0.71	0.56	1.61	1.34	1.04	1.61	0.57	1.00
Machinery and other Capital Equipment.....	1.44	1.27	1.66	1.97	1.01	2.01	1.23	2.27	1.56	2.65	1.64	1.27	1.45
Transport Equipment.....	1.91	0.86	0.75	1.59	0.50	0.58	0.61	0.77	0.70	1.03	0.81	1.11	0.94
Consumer Goods not elsewhere specified....	27.74	24.26	29.49	24.88	21.30	23.33	21.85	27.00	26.54	27.49	28.51	28.57	29.76
Goods not elsewhere specified	-	0.00	-	-	-	-	-	-	0.02	-	-	0.01	-
TOTAL	100.00	100.00	100.00	100.00	100.00	100.00	100.00	100.00	100.00	100.00	100.00	100.00	100.00

Source: Kenya Revenue Authority (KRA)

*Provisional

Table 14 (a) Major Origins of Imports

Month	Value (KSh Million)										
	United Arab Emirates	United Kingdom	South Africa	Saudi Arabia	Japan	India	USA	Germany	Netherlands	France	China
2019*											
January.....	15,110.29	2,640.29	6,782.55	13,077.50	7,831.09	13,049.72	4,648.71	3,212.38	2,241.62	2,045.11	30,573.35
February.....	9,848.60	2,614.15	4,996.59	6,617.78	6,505.19	13,222.71	5,121.96	4,544.47	14,853.29	1,517.91	30,010.11
March.....	6,610.19	3,117.61	5,636.47	17,192.42	5,564.10	10,946.73	4,081.18	2,791.76	1,355.15	3,044.13	18,366.09
April.....	21,750.87	2,559.38	6,145.11	8,056.05	9,785.87	19,517.88	4,828.31	5,865.08	845.04	1,478.12	26,452.62
May.....	19,304.11	3,180.20	7,257.25	9,275.57	7,317.71	18,009.86	8,920.81	3,380.66	2,265.69	2,198.51	28,529.10
June.....	15,735.87	3,148.95	7,691.46	12,974.80	8,952.05	12,274.06	3,748.17	2,610.23	905.85	1,270.00	39,249.87
July.....	13,758.32	2,340.76	8,643.77	15,620.43	8,909.78	11,679.11	6,059.70	7,364.49	2,976.70	1,567.94	32,489.43
August.....	8,880.07	2,981.84	7,021.63	5,631.35	9,214.22	20,227.23	5,075.50	3,333.64	1,233.79	2,797.35	26,686.35
September.....	11,985.32	3,182.68	6,211.08	10,098.56	6,941.66	16,425.32	6,726.13	3,127.74	1,899.12	1,566.79	28,996.09
October.....	11,291.03	3,367.78	4,824.85	11,224.42	9,538.60	14,164.02	5,535.95	3,755.52	928.81	2,298.14	36,905.26
November.....	18,837.43	3,491.79	5,489.09	2,193.17	9,075.03	17,945.05	2,960.16	3,247.95	800.64	2,329.47	37,220.38
December.....	14,764.94	2,640.47	3,340.52	15,202.71	9,797.93	11,411.74	4,565.15	3,205.22	1,620.31	2,577.51	41,246.98
2020*											
January.....	12,572.62	2,682.95	4,993.13	8,800.71	8,162.25	15,598.11	4,372.14	3,897.08	3,998.16	2,325.68	35,061.82
February.....	3,544.80	1,913.50	3,897.21	6,308.86	6,504.63	20,996.77	4,233.87	2,309.68	2,185.89	2,038.83	29,655.18
March.....	11,532.87	2,733.59	5,463.75	9,057.94	8,033.19	21,326.57	4,391.02	3,236.37	1,180.49	1,436.49	16,176.04
April.....	6,540.07	1,865.45	3,122.26	6,198.79	7,571.35	11,662.36	6,402.99	3,318.80	2,069.28	1,487.01	21,042.12
May.....	3,442.31	2,656.30	3,478.28	2,248.85	5,345.12	11,374.96	5,469.71	3,368.18	1,697.75	1,611.51	24,486.22
June.....	4,534.82	2,049.80	3,629.53	1,729.20	5,984.93	14,207.47	4,555.54	3,798.11	1,654.15	2,517.45	31,449.14
July.....	5,965.11	2,062.32	4,538.60	5,132.23	7,391.56	15,773.28	4,941.26	3,170.17	4,654.93	2,273.96	34,185.43
August.....	3,560.81	2,881.30	2,965.31	6,228.75	7,212.17	15,626.79	4,580.86	7,296.31	8,096.97	2,070.02	35,525.36
September.....	10,028.50	2,538.21	4,188.07	11,713.45	7,563.57	14,556.61	4,439.31	2,209.51	988.10	1,377.52	34,942.30
October.....	13,898.24	2,605.64	3,078.13	3,957.92	7,297.80	15,641.22	4,378.26	2,258.66	2,296.08	2,167.73	30,559.41
November.....	7,489.45	2,241.52	3,478.51	6,157.19	6,901.63	16,498.13	4,195.25	2,180.56	5,924.52	2,264.78	29,314.03
December.....	9,574.30	3,063.66	2,986.06	3,927.72	9,727.71	15,383.16	4,366.08	3,189.22	7,150.66	1,722.23	39,082.03

Source: Kenya Revenue Authority

*Provisional

Table 14(b): Imports by Broad Economic Category

Descriptions	Consumer goods Not elsewhere specified												
	2019 Dec	Jan	Feb	March	April	May	Jun	Jul	Aug	Sep	Oct	Nov	2020* Dec
Food and beverages.....	15,236.59	16,649.03	15,793.95	14,501.77	15,455.24	12,019.35	16,576.49	13,552.87	9,912.23	12,775.82	14,821.83	13,437.20	17,161.57
Industrial supplies (Non-Food)	46,904.60	57,612.84	46,297.96	51,560.21	47,459.91	49,471.40	46,442.76	54,599.69	45,582.40	60,055.92	61,110.60	57,002.99	61,773.95
Fuel and Lubricants.....	29,551.14	22,347.62	24,473.50	30,264.25	17,688.00	5,438.06	13,207.20	17,093.45	20,089.22	17,037.55	17,914.95	20,682.75	20,291.64
Machinery & other capital Equipment.....	31,892.95	29,512.00	25,990.99	18,945.93	16,836.18	16,357.09	22,422.36	26,724.05	25,786.87	21,593.62	24,124.03	21,863.38	28,750.18
Transport equipment.....	16,745.36	15,140.39	10,148.94	12,041.87	11,332.96	11,125.86	9,736.74	11,438.38	19,000.95	17,075.79	14,550.08	13,719.69	18,581.44
Consumer goods Not elsewhere specified....	14,204.77	14,149.59	11,107.45	9,913.59	10,917.42	13,642.90	12,967.62	14,018.48	17,318.43	14,658.62	11,430.04	12,335.79	14,555.54
Goods not elsewhere specified.....	726.18	21.49	12.18	13.32	68.51	644.49	248.84	1,334.18	85.46	193.94	1,286.96	0.35	341.36
Total	155,261.58	155,432.97	133,824.98	137,240.93	119,758.20	108,699.14	121,602.01	138,761.11	137,775.57	143,391.27	145,238.48	139,042.14	161,455.69
Percentage Shares:.....													
Food and Beverages	9.81	10.71	11.80	10.57	12.91	11.06	13.63	9.77	7.19	8.91	10.21	9.66	10.63
Industrial Supplies (Non-Food).....	30.21	37.07	34.60	37.57	39.63	45.51	38.19	39.35	33.08	41.88	42.08	41.00	38.26
Fuel and Lubricants	19.03	14.38	18.29	22.05	14.77	5.00	10.86	12.32	14.58	11.88	12.33	14.88	12.57
Machinery and other Capital Equipment.....	20.54	18.99	19.42	13.80	14.06	15.05	18.44	19.26	18.72	15.06	16.61	15.72	17.81
Transport Equipment.....	10.79	9.74	7.58	8.77	9.46	10.24	8.01	8.24	13.79	11.91	10.02	9.87	11.51
Consumer Goods not elsewhere specified....	9.15	9.10	8.30	7.22	9.12	12.55	10.66	10.10	12.57	10.22	7.87	8.87	9.02
Goods not elsewhere specified.....	0.47	0.01	0.01	0.01	0.06	0.59	0.20	0.96	0.06	0.14	0.89	0.00	0.21
TOTAL	100	100	100	100	100	100	100	100	100	100	100	100	100

Source: Kenya Revenue Authority

*Provisional

Table 14 (c): Mobile Money Transactions

As at the end of month	Mobile money Agents	Mobile money subscriptions (millions)	Number of Transactions (millions)*	Value (KSh billions)
2019				
January	201,336	40.30	154.24	368.02
February	212,252	50.04	144.49	328.15
March	226,957	50.36	161.38	368.39
April	230,220	52.05	155.80	360.22
May	224,825	52.20	153.26	364.25
June	222,484	46.80	149.73	346.85
July	222,087	53.89	152.98	366.39
August	222,479	54.78	151.83	368.50
September	224,959	55.70	151.22	365.91
October	223,176	56.29	156.11	366.90
November	222,211	58.04	153.06	359.26
December	224,108	58.36	154.99	382.93
2020				
January	231,292	59.17	150.20	371.90
February	235,543	58.67	148.53	350.48
March	240,261	58.71	150.69	364.51
April	242,275	59.43	124.99	307.99
May	243,115	60.24	135.92	357.37
June	237,637	61.73	143.14	392.17
July	234,747	62.07	157.76	450.98
August	252,703	62.78	163.21	473.52
September	263,200	64.03	163.34	483.21
October	273,531	65.26	174.11	528.90
November	275,960	65.77	170.03	526.81
December	282,929	66.01	181.37	605.69

Source: Central Bank of Kenya

Table 14(d): International trade in ICT

	KSh Million												
	2019			2020									
Imports	Oct	Nov	Dec	Jan	Feb	March	April	May	Jun	Jul	Aug	Sep	Oct
Office machines 1.....	137.10	504.50	192.34	84.29	79.90	113.40	113.81	51.85	39.62	168.26	72.11	125.18	64.95
Automatic data processing machines, storage units etc.....	1,751.45	1,326.39	1,488.13	1,367.33	707.23	1,267.91	1,170.54	998.67	1,598.26	1,386.40	1,445.80	873.65	1,024.34
Part and accessories 2.....	55.11	47.01	76.64	49.87	45.53	64.90	30.44	62.36	80.64	117.36	167.69	51.51	52.39
Monitors and projectors and reception apparatus for television ³	1,091.11	658.67	933.97	1,003.35	751.91	482.14	537.36	691.50	980.01	1,177.44	999.30	1,190.65	964.97
Reception apparatus for radio broadcasting ⁴	18.50	27.57	8.17	29.31	39.89	13.47	14.70	14.99	32.27	29.29	33.43	39.95	41.45
Recording equipments 5.....	2.72	158.50	330.24	32.74	14.10	9.67	5.95	12.62	17.97	158.35	31.52	14.28	5.05
Telecommunications equipment 6.....	2,539.21	3,008.67	2,178.71	2,754.90	1,151.53	1,829.69	739.03	1,589.56	2,651.51	3,115.44	2,141.07	2,411.17	3,642.68
Exports													
Office machines 1.....	1.47	0.00	0.00	8.32	0.17	31.65	1.83	2.77	7.57	31.42	17.33	0.42	0.30
Automatic data processing machines, storage units etc.....	28.00	22.88	21.30	17.36	56.13	101.57	67.46	31.97	53.99	31.82	36.12	124.18	72.86
Part and accessories 2.....	7.19	1.76	1.65	1.39	0.07	1.81	0.87	0.94	5.19	5.32	14.30	0.39	3.32
Monitors and projectors and reception apparatus for television ³	21.87	19.77	1.47	2.97	2.23	7.63	46.94	5.31	1.07	4.85	7.90	3.24	5.04
Reception apparatus for radio broadcasting ⁴	1.79	1.18	2.32	-	0.05	-	1.47	3.78	0.004	3.92	0.31	0.01	0.01
Recording equipments 5.....	0.22	0.14	0.43	0.01	0.07	0.04	0.14	0.00	0.07	0.04	0.06	0.00	0.14
Telecommunications equipment 6.....	42.38	26.55	5.97	20.49	23.60	41.51	24.15	4.09	13.93	44.55	19.40	213.02	21.35

¹ Electronic calculating machines, cash registers, accounting machines, postage-

² For office machines and data processing machines

³ Include Television sets, decoders etc

⁴ Whether or not combined with sound recording or reproducing apparatus or a

⁵ Sound recording, video recording or reproducing apparatus including or not

⁶ Such as computer, laptops, networking equipments etc plus their parts and

Source: Kenya Revenue Authority (KRA)

Table 15(a): Local Electricity Generation by Source

							KWh Million
Month	Hydro	Geo - Thermal	Thermal*	Wind	Solar	Co- Generation	Total
2019							
January	278.92	417.35	114.07	147.55	7.99	0.02	965.90
February	253.91	374.43	98.56	146.21	7.02	0.01	880.14
March	282.83	445.10	99.00	144.00	8.07	0.02	979.02
April	191.99	397.66	181.14	142.21	8.19	0.01	921.20
May	242.63	427.38	110.34	164.12	7.91	0.00	952.39
June	272.42	413.44	146.23	92.38	7.07	0.05	931.59
July	268.91	440.30	133.41	124.89	7.09	0.02	974.62
August	251.48	425.46	131.77	151.43	7.44	0.03	967.61
September	233.80	453.93	104.77	152.91	7.91	0.03	953.34
October	268.40	493.56	69.51	137.42	8.05	0.04	976.98
November	299.19	481.90	62.44	114.03	7.84	0.02	965.42
December	360.88	464.14	62.18	45.57	7.58	0.05	940.40
2020*							
January	357.69	476.60	54.51	89.70	7.59	0.01	986.09
February	341.94	430.73	53.83	100.16	6.94	0.02	933.62
March	359.11	460.27	55.65	85.88	7.80	0.02	968.74
April	297.63	411.76	35.75	88.03	7.75	0.04	840.96
May	319.47	391.79	56.30	105.62	7.89	0.01	881.09
June	334.17	421.44	61.87	88.45	6.96	0.01	912.90
July	357.84	433.46	60.63	110.42	6.78	0.00	969.14
August	357.69	423.59	70.50	118.62	6.68	0.01	977.09
September	355.75	380.70	89.46	139.82	6.79	0.01	972.51
October	373.09	440.13	79.51	121.83	8.16	0.01	1,022.74
November	385.74	396.82	59.65	147.84	7.59	0.01	997.65
December	400.31	392.50	77.32	134.98	7.10	0.03	1,012.24

*Provisional

Source: Kenya Power & Lighting Company

Fig. 7: Electricity Generation by Source

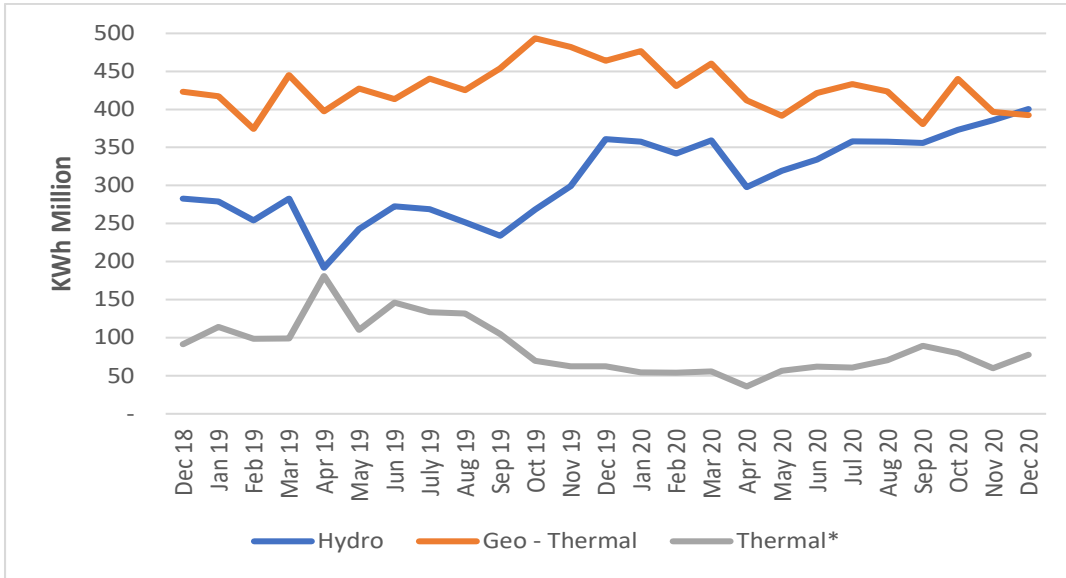


Table 15(b): Generation and Consumption of Electricity

Millions of Kilowatt Hours										
Month	Generation					Consumption				
	Local Generation	Imports			Total Generation	Total KPLC Sales	Exports			
		Uganda	Tanzania	Ethiopia			Uganda	Tanzania	Total	
2019										
January	965.90	15.18	-	-	15.18	981.08	778.12	1.85	0.01	
February	880.14	13.92	-	0.36	14.28	894.42	691.32	1.91	-	
March	979.02	16.75	-	0.39	17.14	996.16	752.26	1.70	-	
April	921.20	26.85	-	0.37	27.22	948.42	736.38	0.71	-	
May	952.39	24.23	-	0.30	24.53	976.92	733.14	0.19	-	
June	931.59	15.50	-	0.35	15.85	947.44	722.34	0.70	-	
July	974.62	16.88	-	0.29	17.17	991.79	747.56	0.68	-	
August	967.61	23.75	-	0.42	24.17	991.78	749.32	0.60	-	
September	953.34	10.97	-	0.39	11.36	964.70	738.73	1.76	-	
October	976.98	12.21	-	0.37	12.58	989.56	752.51	1.83	-	
November	965.42	18.02	-	0.36	18.38	983.80	761.90	1.35	-	
December	940.40	13.81	-	0.37	14.18	954.58	709.22	2.88	-	
2020*										
January	986.09	10.51	-	0.41	10.92	997.01	772.37	1.60	-	
February	933.62	10.24	-	0.37	10.62	944.22	740.48	1.25	-	
March	968.74	10.92	-	0.36	11.27	979.99	761.90	1.85	-	
April	840.96	8.67	-	0.33	9.00	849.96	645.29	1.30	-	
May	881.09	9.28	-	0.41	9.69	890.78	660.11	1.32	-	
June	912.90	10.94	-	0.40	11.34	924.25	716.08	1.31	-	
July	969.14	12.16	-	0.41	12.57	981.71	729.11	1.38	-	
August	977.09	12.88	-	0.43	13.31	990.40	733.67	1.25	-	
September	972.51	13.31	-	0.39	13.70	986.21	751.23	1.14	-	
October	1,022.74	11.79	-	0.44	12.23	1,034.97	778.02	1.30	-	
November	997.65	10.02	-	0.35	10.37	1,008.01	757.68	1.42	-	
December	1,012.24	11.28	-	0.39	11.66	1,023.91	748.44	1.42	-	

*Provisional

Source: Kenya Power & Lighting Company

Table 15(c): Consumption of Petroleum Fuels

								'000 MT
Month	AGO (Light Diesel Oil)	Jet	Fuel Oil	Motor Spirit	Illuminating Kerosene	IDO (Heavy Diesel Oil)	LPG	Aviation Gasoline
2019								
January.....	183.69	61.25	30.61	119.69	19.54	0.00	28.49	1.33
February.....	183.39	56.64	26.00	115.41	16.00	0.00	26.91	0.74
March.....	186.17	56.48	33.37	113.79	14.83	0.83	20.01	1.40
April.....	195.90	53.49	44.77	125.34	15.38	0.00	18.72	1.21
May.....	195.87	54.50	38.89	121.46	15.45	0.00	18.72	1.38
June.....	169.38	55.05	44.80	104.97	12.52	0.00	13.27	1.28
July.....	189.20	60.32	28.19	137.97	13.20	0.00	-	1.21
August.....	191.85	63.31	34.34	119.79	12.37	0.00	-	1.28
September...	178.76	60.71	32.95	113.23	11.13	0.00	-	0.12
October.....	181.66	57.29	24.27	118.91	14.19	0.49	25.27	0.07
November....	175.09	58.97	21.36	116.67	11.01	0.00	31.31	0.10
December....	167.79	61.34	23.22	127.09	12.68	0.00	26.73	0.10
2020*								
January.....	190.11	62.21	13.61	123.45	11.21	0.00	12.89	0.13
February.....	173.90	58.45	18.10	112.98	10.93	0.32	36.54	0.10
March.....	187.57	42.55	24.79	111.44	10.85	0.21	23.98	0.11
April.....	137.71	6.32	21.36	82.20	10.76	0.00	31.43	0.03
May.....	139.71	17.38	22.79	91.89	10.98	0.00	30.86	1.19
June.....	158.19	19.42	18.85	103.91	12.16	0.00	23.33	0.02
July.....	185.64	23.19	21.14	125.51	9.93	0.00	28.24	0.05
August.....	191.38	29.72	25.96	120.20	13.18	0.03	41.31	0.06
September...	194.96	30.67	25.81	121.16	7.65	0.12	21.42	0.08
October.....	199.14	34.15	23.52	131.44	12.72	1.07		0.05
November....	187.96	34.06	23.51	121.94	9.29	3.54		0.08
December....	197.19	40.26	32.05	145.29	8.92	5.66		0.08

Source: Ministry of Energy and Petroleum and Energy & Petroleum Regulatory Authority (EPRA)

MT: Denotes Metric Tonnes

*Provisional

Table 15(d): Average Retail Prices for Selected Fuel Products within Nairobi

KSh per litre			
Period	Motor Gasoline Premium	Light Diesel Oil (Gasoil)	Illuminating Kerosene
2019			
January.....	104.21	102.24	101.70
February.....	100.09	95.96	96.50
March.....	101.35	96.61	99.46
April.....	106.60	102.13	102.22
May.....	112.03	104.37	104.62
June.....	115.05	104.72	104.26
July.....	115.39	103.88	101.97
August.....	112.53	100.60	103.95
September...	112.81	103.04	100.64
October.....	108.05	101.96	101.08
November....	110.59	104.61	104.06
December....	109.50	101.78	102.31
2020			
January.....	110.20	102.32	103.95
February.....	112.87	104.45	102.69
March.....	110.87	101.65	95.46
April.....	92.87	97.56	77.28
May.....	83.33	78.37	79.77
June.....	89.10	74.57	62.46
July.....	100.48	91.87	65.45
August.....	103.95	94.63	83.65
September...	105.43	94.51	83.15
October.....	107.27	92.91	83.73
November....	105.85	90.70	81.63
December....	106.82	91.82	83.56

Table 15(e): Average Retail Prices for Selected Fuels in Kenya (National Average Retail Prices)

Period	Motor Gasoline Premium (KSh per Litre)	Light Diesel Oil (KSh per Litre)	Illuminating Kerosene (KSh per Litre)	L.P.G (KSh per 13 Kg)	Charcoal (KSh per Kg)
2019					
January.....	104.99	103.10	102.56	2,193.13	141.22
February.....	101.13	96.83	102.56	2,189.99	141.04
March.....	102.13	97.47	97.63	2,191.84	140.42
April.....	107.57	103.09	100.31	2,184.85	145.05
May.....	112.79	105.23	102.49	2,193.17	146.24
June.....	115.82	105.57	105.48	2,192.25	144.14
July.....	116.14	104.74	105.11	2,171.47	145.15
August.....	111.70	104.92	100.60	2,150.27	144.66
September.....	113.57	103.90	101.44	2,141.31	144.74
October.....	108.83	102.82	101.94	2,124.79	147.17
November.....	110.99	105.10	104.53	2,100.88	151.03
December.....	109.91	102.28	102.81	2,101.16	152.37
2020					
January.....	110.61	102.81	104.46	2,144.81	152.25
February.....	112.58	105.37	103.65	2,055.30	58.12
March.....	112.07	102.93	96.72	2,065.98	56.83
April.....	94.09	98.84	78.59	2,077.88	57.87
May.....	84.58	79.67	81.08	2,075.87	57.41
June.....	90.34	75.88	63.79	2,078.50	57.19
July.....	101.37	92.81	66.41	2,075.00	57.37
August.....	104.83	95.57	84.60	2,060.15	58.60
September.....	106.30	95.45	84.09	2,033.57	58.29
October.....	108.13	93.85	84.67	2,017.77	58.20
November.....	106.72	91.64	82.58	2,019.88	58.20
December.....	107.69	92.75	84.50	1,977.36	57.76

Note: Unit of measure for charcoal changed to 1 kg beginning February 2020.....

Fig. 8: Average Prices for Liquefied Petroleum Gas in Kenya ('000 KSh per 13 Kg cylinder)

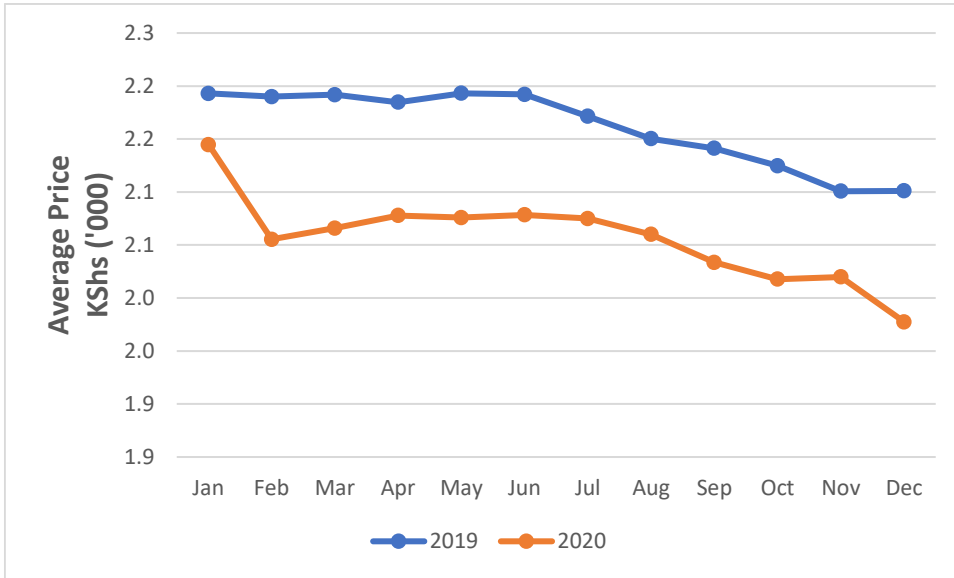


Table 15(f): Opec Reference basket and Murban Crude Oil Prices

Month/Year	US\$/ BBL				
	2016	2017	2018	2019	2020*
January.....	29.95	55.35	66.28	60.81	66.09
February.....	33.00	56.10	65.98	65.64	55.53
March.....	38.20	52.60	66.31	68.60	33.92
April.....	42.00	53.40	70.97	73.05	17.66
May.....	47.35	51.45	76.71	69.70	25.17
June.....	49.05	47.30	73.22	62.75	37.05
July.....	44.60	48.60	76.00	64.86	43.42
August.....	48.85	48.85	74.91	60.16	45.19
September.....	45.50	55.70	78.75	62.39	41.54
October.....	51.35	63.83	81.28	60.88	40.08
November.....	46.15	63.65	68.05	63.48	42.61
December.....	54.15	62.06	59.33	66.66	49.17

US\$/ BBL: US Dollar per Barrel

2016-2019 prices are Murban Adnoc crude oil monthly average prices

Price: Abu Dhabi Free On Board (FOB)

ADNOC: Abu Dhabi National Oil Corporation

* As from Feb 2020 all prices published will refer to the OPEC reference basket as defined by the Monthly oil market report

* As from Feb 2020 all prices published are crude spot prices on the 20th of the reference month

Table 16: Value of Building Plans Approved for Nairobi City County

KSh Million

Month	Actual Value of Buildings			Real *		
	Residential	Non Residential	Aggregate	Residential	Non Residential	Aggregate
2019						
January.....	10,435.29	7,064.94	17,500.23	114.03	75.22	188.92
February.....	10,357.13	7,435.42	9,792.55	113.18	79.16	105.71
March.....	12,256.40	8,991.05	21,247.45	133.94	95.73	229.37
April.....	11,511.20	7,347.15	18,858.35	125.79	78.22	203.58
May.....	15,042.46	8,190.28	23,232.74	164.38	87.20	250.80
June.....	16,277.14	6,346.94	22,624.08	177.87	67.58	244.23
July.....	13,349.98	6,312.74	19,662.72	145.89	67.21	212.26
August.....	11,431.42	4,231.30	15,662.72	124.92	45.05	169.08
September.....	13,888.31	5,986.40	19,874.71	151.77	63.74	214.55
October.....	13,630.56	9,579.64	23,210.20	148.95	101.99	250.56
November.....	-	-	-	-	-	-
December.....	10,026.76	5,932.38	15,959.14	109.57	63.16	172.28
2020						
January.....	12,361.60	7,985.49	20,347.09	126.87	82.73	208.88
February.....	24,801.96	6,716.30	31,518.26	254.55	69.58	323.57
March.....	22,827.64	7,744.80	30,572.44	234.29	80.23	313.86
April.....	12,284.89	8,749.42	21,034.30	126.08	90.64	215.94
May.....	3,430.74	2,582.29	6,013.02	35.21	26.75	61.73
June.....	-	-	-	-	-	-
July.....	-	-	-	-	-	-
August.....	5,037.15	2,127.04	7,164.20	51.70	22.04	73.55
September.....	3,302.22	828.84	4,131.06	33.89	8.59	42.41
October.....	8,989.03	3,779.25	12,768.28	92.26	39.15	131.08
November.....	12,602.44	4,315.91	16,918.34	129.34	44.71	173.68

* Actual deflated by relevant construction cost indices (Dec1972 =100)

- No Building plans were approved

Table 17(a): Domestic Production of Sugar

Month/Year	Metric tonnes					
	2015 ⁺	2016 ⁺	2017 ⁺	2018 ⁺	2019 ⁺	2020 [*]
January	63,127	64,499	53,071	62,819	53,060	53,155
February	57,917	59,863	49,094	53,835	46,139	51,083
March	63,389	65,709	42,238	49,148	45,463	52,699
April	50,097	48,802	26,230	36,682	35,312	45,468
May	44,081	45,155	15,246	28,933	36,307	46,350
June	46,098	53,797	16,113	28,320	28,545	49,681
July	47,957	56,948	17,882	30,260	25,097	53,131
August	54,089	52,231	10,892	35,676	32,835	53,532
September	61,069	46,512	21,649	40,725	33,356	54,873
October	56,360	49,029	31,621	45,324	35,259	
November	43,401	51,118	43,175	41,107	30,900	
December	48,089	46,076	48,900	38,268	38,662	
Total	631,957	639,741	376,111	491,097	440,935	459,972

Source: Sugar Directorate

*Provisional

Revised ⁺

Table 17(b): Production of Soft Drinks

					'000 Litres
Month	2016	2017	2018	2019	2020*
January	41,348	50,409	52,062	53,585	52,654
February	41,440	43,353	49,685	55,218	49,406
March	48,865	50,623	52,580	61,413	49,494
April	42,148	46,399	45,690	58,230	46,015
May	36,874	40,742	41,482	53,086	34,129
June	36,202	45,875	44,827	46,074	44,829
July	32,158	41,980	43,725	47,149	44,394
August	38,508	41,217	48,795	49,248	39,290
September	40,291	40,221	45,956	53,234	49,993
October	43,203	45,275	46,546	47,586	
November	40,141	45,073	50,201	50,715	
December	49,966	66,378	54,021	55,398	
Total	491,143	557,548	575,569	630,936	410,205

**Provisional*

Table 17(c): Production of Assembled Vehicles

Month/Year	Numbers				
	2016	2017	2018	2019	2020*
January	363	276	395	431	614
February	587	578	529	614	861
March	650	645	548	633	830
April	658	436	409	739	669
May	642	434	407	732	659
June	482	323	366	556	415
July	491	483	587	648	719
August	605	302	434	709	768
September	623	351	606	595	798
October	357	370	569	728	
November	461	364	476	872	
December	376	322	327	545	
Total	6,295	4,884	5,653	7,802	6,333

**Provisional*

Table 17(d): Production of Galvanized Sheets

Metric Tonnes					
Month/Year	2016	2017	2018	2019	2020*
January.....	21,330	26,230	23,919	20,124	23,397
February.....	20,102	22,994	21,890	22,749	21,989
March.....	20,120	22,574	22,048	26,313	18,527
April.....	23,109	23,225	21,434	23,214	12,469
May.....	21,980	23,081	22,271	22,501	18,076
June.....	20,180	15,424	21,434	24,667	18,307
July.....	18,320	22,640	22,510	23,260	25,898
August.....	24,190	15,296	21,847	21,918	24,631
September.....	21,045	24,188	22,425	22,641	25,405
October.....	18,328	21,312	23,906	22,619	27,038
November.....	19,143	24,357	22,877	21,871	
December.....	19,431	21,438	21,266	22,547	
Total	247,278	262,759	267,828	274,425	215,736

*Provisional

Table 17(e): Cement Production and Consumption

Month/Year	Tonnes					
	2018		2019		2020*	
	Production	Consumption	Production	Consumption	Production	Consumption
January.....	523,625	499,260	485,178	483,747	530,404	528,904
February.....	508,648	495,128	470,146	469,809	548,818	547,543
March.....	510,674	497,791	507,037	505,465	559,424	551,914
April.....	496,527	475,365	501,921	500,357	509,197	506,800
May.....	464,422	449,160	486,301	486,637	511,961	509,698
June.....	477,053	470,112	477,432	466,923	527,619	524,998
July.....	518,656	511,240	527,115	527,771	600,571	594,028
August.....	538,071	531,119	512,470	510,066	628,496	607,383
September.....	503,641	499,568	519,370	515,953	696,159	666,508
October.....	504,959	502,719	504,615	499,355	768,898	760,769
November.....	496,346	494,038	479,085	474,075	716,583	710,685
December.....	487,312	481,880	496,517	493,176		
TOTAL.....	6,029,934	5,907,380	5,967,186	5,933,333	6,598,130	6,509,229

*Provisional

Table 17(f): Milk Intakes in the Formal Sector

Month/Year	Million Litres				
	2016	2017	2018	2019	2020*
January.....	56.80	45.13	51.55	68.07	63.39
February.....	52.83	46.24	47.30	54.66	53.88
March.....	48.41	38.64	49.85	54.33	56.09
April.....	54.35	47.09	52.01	41.46	48.61
May.....	49.49	47.24	49.63	48.29	49.36
June.....	66.37	48.87	50.33	52.33	53.24
July.....	58.47	42.55	53.18	63.54	54.31
August.....	56.15	54.95	52.56	60.46	59.31
September.....	43.67	55.81	56.37	63.21	58.04
October.....	56.93	58.14	55.25	59.32	59.71
November.....	54.09	55.21	57.02	51.30	60.58
December.....	50.66	51.51	68.15	68.91	65.80
Total.....	648.22	591.38	643.20	685.87	682.33

Source: Kenya Dairy Board

* Provisional

April-june 2020 revised

Fig. 9: Milk Intake in the Formal Sector

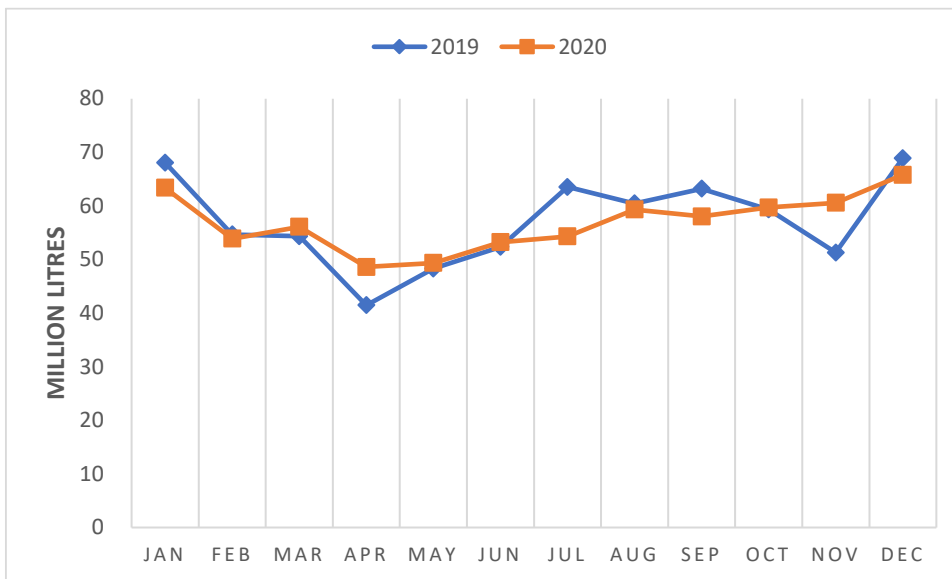


Table 18: Visitor Arrivals through J.K.I.A and M.I.A

			Numbers*
Month	AIRPORT		Total
	JKIA	MIA	
2019			
January	113,362	15,727	129,089
February	107,058	12,864	119,922
March	106,001	9,732	115,733
April	104,418	5,096	109,514
May	98,788	3,689	102,477
June	126,822	2,454	129,276
July	150,286	8,663	158,949
August	150,723	11,000	161,723
September	124,001	9,208	133,209
October	115,828	10,940	126,768
November	111,548	12,339	123,887
December	121,912	12,391	134,303
2020			
January	114,873	12,214	127,087
February	108,578	11,092	119,670
March	43,346	3,950	47,296
April	12	0	12
May	1,229	0	1,229
June	534	2	536
July	617	1	618
August	13,371	548	13,919
September	19,403	761	20,164
October	28,451	1,184	29,635
November	30,719	1,156	31,875
December	44,279	3,127	47,406

Source: Department of immigration Services Kenya

* Visitors arrivals exclude Kenyans

Fig. 10: Visitor Arrivals through J.K.I.A and M.I.A

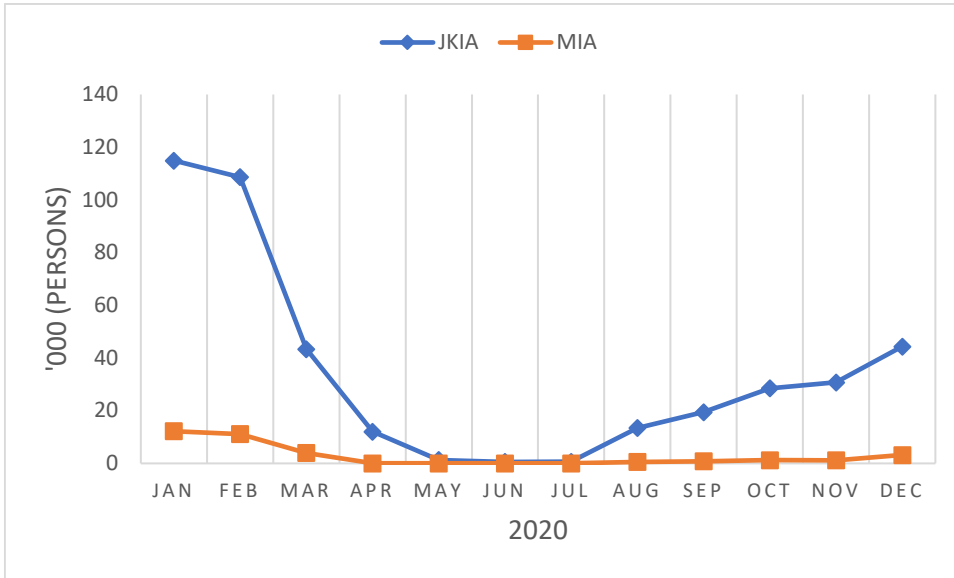


Table 19(a): Jomo Kenyatta international airport-Embarked Passengers by Port of Destination

PORTS/MONTH	2019					2020						Number
	Dec	Mar	Apr	May	Jun	Jul	Aug	Sep	Oct	Nov	Dec	
Amsterdam	10,258	6,631	212	0	406	298	2,919	1,873	2,642	2,401	3,154	
Brussels	0	0	0	0	0	0	0	0	0	0	0	
London	7,211	7,196	107	219	507	140	2,522	2,526	2,541	2,494	3,379	
Paris	6,443	4,543	0	0	0	81	1,117	1,291	1,441	773	1,678	
Zurich	985	70	0	0	0	643	113	347	209	2	0	
Other Europe	2,769	1,185	798	10	47	228	3,510	3,162	3,823	3,358	4,224	
Total Europe	27,666	19,625	1,117	229	960	1,390	10,181	9,199	10,656	9,028	12,435	
New York	3,533	3,467	3,465	0	0	0	0	0	0	91	512	
Other North America	0	0	0	0	0	0	0	0	0	0	0	
Total North America	3,533	3,467	3,465	0	0	0	0	0	0	91	512	
Dubai	23,062	10,344	15	0	4	1,200	3,785	5,186	6,665	7,544	10,128	
Jeddah	1,188	498	0	16	0	10	0	103	191	565	512	
Other Middle East	25,030	9,454	182	402	463	15	3,216	3,743	4,876	5,672	6,799	
Total Middle East	49,280	20,296	197	418	467	1,225	7,001	9,032	11,732	13,781	17,439	
Mumbai	3,799	1,587	0	0	467	229	0	0	689	1,983	1,918	
Bangkok	1,336	108	0	0	0	0	0	0	0	0	0	
Other Far East	1,473	0	0	218	118	333	1,075	1,021	1,381	2,492	3,937	
Total Far East	6,608	1,695	0	218	585	562	1,075	1,021	2,070	4,475	5,855	
Addis Ababa	17,375	9,381	217	308	1,050	650	3,264	3,655	4,945	5,987	7,504	
Bujumbura	1,540	533	0	1	1	49	0	58	0	648	908	
Dar-es-alaam	7,314	3,231	117	2	0	38	59	301	1,975	2,189	2,661	
Entebbe	11,444	4,802	0	5	34	73	46	62	3,500	4,615	5,190	
Kigali	6,199	2,578	3	28	86	0	1,796	1,693	1,957	2,296	2,836	
Kinshasa	327	252	4	0	4	4	19	359	882	961	1,126	
Other East & Central Africa	2,176	1,210	7	4	6	4	3	229	590	664	747	
Total East & Central Africa	46,375	21,987	348	348	1,181	818	5,187	6,357	13,849	17,360	20,972	
Mauritius	2,709	616	0	0	0	0	0	58	0	0	0	
Seychelles	796	353	0	55	125	0	0	0	4	0	86	
Zanzibar	4,206	1,440	0	0	0	0	0	118	1,010	1,448	2,461	
Other Indian Ocean Islands	818	595	4	0	0	0	300	278	678	820	1,184	
Total Indian Ocean Islands	8,529	3,004	4	55	125	0	300	454	1,692	2,268	3,731	
Abidjan	422	229	0	0	0	0	440	267	747	310	377	
Douala	110	183	0	0	0	0	436	427	499	397	890	
Lagos	1,052	842	0	0	0	0	48	922	1,132	2,230	3,581	
Accra	1,326	712	0	0	0	0	48	214	621	1,272	1,689	
Other West Africa	296	151	528	0	21	0	122	102	42	4	0	
Total West Africa	3,206	2,117	528	0	21	0	1,094	1,932	3,041	4,213	6,537	
Johannesburg	7,023	4,447	0	0	0	41	80	153	2,344	2,941	3,926	
Harare	898	509	0	0	4	0	5	0	261	205	486	
Lilongwe	1,224	498	0	10	0	7	0	176	409	505	999	
Lusaka	934	477	0	34	0	29	531	312	799	1,113	1,304	
Cape Town	0	846	0	0	0	0	0	0	0	0	173	
Other South Africa	1,264	523	0	0	0	0	183	0	323	526	1,167	
Total Southern Africa	11,343	7,300	0	44	4	77	799	641	4,136	5,290	8,055	
Cairo	3,079	1,589	0	1	136	0	1,149	739	758	860	1,103	
Khartoum	382	226	0	0	10	58	0	0	0	5	16	
Juba	2,343	1,271	24	0	74	195	1,125	1,639	1,692	1,849	1,581	
Other North Africa	0	1	144	5	0	0	0	2	13	6	4	
Total North Africa	5,804	3,087	168	6	220	253	2,274	2,380	2,463	2,720	2,704	
Other International	5,784	3,514	9	299	342	660	2,658	3,632	4,645	5,481	4,731	
Total International	164,595	86,092	5,836	1,617	3,905	4,985	30,569	34,648	54,284	64,707	82,971	

Table 19(b): Jomo Kenyatta international airport- Landed Passengers by Port of Origin

PORTS/MONTH	Number										
	2019					2020					
	Dec	Mar	Apr	May	Jun	Jul	Aug	Sep	Oct	Nov	Dec
Amsterdam	16,779	7,977	0	0	0	16	2,500	2,127	2,791	2,726	5,007
Brussels	0	0	0	0	0	0	0	0	0	0	0
London	13,999	6,881	0	143	389	1	2,837	2,600	3,443	3,584	6,509
Paris	12,228	4,955	0	0	0	108	1,070	1,163	1,560	963	2,396
Zurich	5,148	1,609	0	0	0	0	244	520	448	0	0
Other Europe	11,273	3,127	3	11	7	140	4,017	3,617	3,977	4,482	5,892
Total Europe	59,427	24,549	3	154	396	265	10,668	10,027	12,219	11,755	19,804
New York	5,646	1,781	0	0	0	0	0	0	0	0	1,136
Other North America	0	0	0	0	0	0	0	0	0	0	0
Total North America	5,646	1,781	0	0	0	0	0	0	0	0	1,136
Dubai	31,199	11,820	22	381	237	411	5,102	5,348	7,576	7,317	11,388
Jeddah	2,221	643	0	0	0	179	162	87	827	881	621
Other Middle East	28,720	7,869	0	21	139	344	5,348	4,017	4,750	5,147	9,371
Total Middle East	62,140	20,332	22	402	376	934	10,612	9,452	13,153	13,345	21,380
Mumbai	9,643	5,971	0	233	530	96	215	0	1,369	1,614	2,078
Bangkok	6,557	857	0	0	0	0	0	0	0	0	0
Other Far East	2,775	4	0	165	0	0	496	1,352	1,346	2,326	2,472
Total Far East	18,975	6,832	0	398	530	96	711	1,352	2,715	3,940	4,550
Addis Ababa	21,573	9,439	74	3	246	433	3,102	3,687	5,921	6,723	9,279
Bujumbura	2,958	1,642	0	7	0	16	7	93	2	511	807
Dar-es-alaam	11,888	6,202	0	1	0	5	424	304	2,259	2,396	2,787
Entebbe	19,736	8,826	0	4	8	0	63	63	2,957	3,823	5,030
Kigali	10,218	4,405	3	0	36	1	1,346	1,375	2,007	2,334	3,122
Kinshasa	3,519	1,494	4	0	8	6	27	416	770	999	1,142
Other East & Central Africa	6,037	3,709	0	6	1	5	10	148	101	455	1,200
Total East & Central Africa	75,929	35,717	81	21	299	466	4,979	6,086	14,017	17,241	23,367
Mauritius	3,090	1,160	0	0	0	0	0	23	0	0	0
Seychelles	1,830	984	0	0	0	0	0	0	0	4	87
Zanzibar	6,017	4,611	0	0	0	0	0	90	1,164	1,281	1,932
Other Indian Ocean Islands	8,512	3,228	0	0	0	1	235	352	750	1,361	1,494
Total Indian Ocean Islands	19,449	9,983	0	0	0	1	235	465	1,914	2,646	3,513
Abidjan	2,026	1,071	0	0	125	0	238	261	486	460	652
Douala	52	11	0	0	0	0	0	0	0	121	0
Lagos	3,300	1,681	0	0	36	0	227	436	923	1,857	2,648
Accra	3,645	2,140	0	0	0	3	69	231	940	1,412	1,600
Other West Africa	2,006	1,165	0	0	0	0	417	610	537	622	562
Total West Africa	11,029	6,068	0	0	161	3	951	1,538	2,886	4,472	5,462
Johannesburg	19,283	6,307	0	1	176	19	289	169	2,518	3,795	4,827
Harare	4,355	1,438	0	0	4	0	93	5	472	792	1,023
Lilongwe	3,013	870	2	0	48	0	7	212	439	292	393
Lusaka	5,021	2,395	0	11	0	0	567	236	486	567	982
Cape Town	2,774	1,531	0	0	0	0	0	0	0	0	206
Other South Africa	7,897	3,771	0	4	0	0	16	107	649	1,156	1,855
Total Southern Africa	42,343	16,312	2	16	228	19	972	729	4,564	6,602	9,286
Cairo	2,199	729	0	0	24	0	774	933	813	899	975
Khartoum	821	509	0	2	0	97	3	12	6	0	9
Juba	3,422	1,777	1	18	104	110	1,183	1,284	1,505	1,665	2,833
Other North Africa	8	8	0	1	0	9	7	1	0	6	6
Total North Africa	6,450	3,023	1	21	128	216	1,967	2,230	2,324	2,570	3,823
Other International	7,915	3,716	38	220	122	179	1,408	2,646	3,979	4,155	5,070
Total International	303,657	128,313	147	1,232	2,240	2,179	32,503	34,525	57,771	66,726	97,391

Table 19(c): New Vehicle Registration

Body Type	2019		2020											Number
	Nov	Dec	Jan	Feb	Mar	Apr	May	June	July	Aug	Sep	Oct	Nov	
Saloons.....	767	775	794	444	458	290	270	392	632	713	596	1,045	876	
Station Wagons.....	6,341	6,070	6,282	3,910	4,033	2,336	2,373	3,351	5,444	5,814	4,307	7,327	6,343	
Vans.....	430	342	393	370	268	140	104	203	312	362	332	537	415	
Pick Ups.....	342	372	285	327	383	261	190	313	418	211	231	508	459	
Mini Buses.....	192	130	131	118	45	13	10	42	69	61	39	142	92	
Buses.....	174	130	100	98	82	37	35	42	98	63	41	140	55	
Lorries.....	572	453	477	486	475	371	289	401	597	610	627	712	661	
Trailers.....	151	108	180	95	121	82	94	176	228	279	263	232	318	
Motor Cycles.....	17,247	17,563	22,011	19,562	20,199	5,099	8,884	15,371	18,265	21,744	17,606	27,284	24,776	
Three Wheelers.....	450	516	640	388	514	252	248	469	488	562	719	811	404	
Wheeled Tractors.....	100	100	209	152	158	165	93	186	195	233	318	229	283	
Others.....	297	194	278	368	247	203	166	245	370	707	631	542	498	
Totals.....	27,063	26,753	31,780	26,318	26,983	9,249	12,756	21,191	27,116	31,359	25,710	39,509	35,180	

Source: National Transport and Safety Authority

Table 19(d): Passenger and Cargo Movement on the Standard Gauge Railway

Month	PASSENGER				FREIGHT			
	2019		2020*		2019		2020*	
	No. Passengers	Revenue (KSh)	No. Passengers	Revenue (KSh)	Tonnage	Total Revenue (KSh)	Tonnage	Total Revenue (KSh)
January	122,110	125,603,470.00	117,380	130,259,172.00	365,356	1,017,267,963.07	375,828	1,092,525,773.00
February	112,207	125,106,870.00	114,241	127,932,570.00	308,540	788,980,196.52	293,088	834,044,061.00
March	121,237	175,688,410.00	89,109	92,139,340.00	331,906	900,456,088.88	259,138	754,497,297.00
April	159,328	123,271,010.00	6,363	5,905,980.00	356,906	1,012,526,073.56	327,091	885,953,573.00
May	116,601	141,627,650.00	0	0.00	319,757	940,487,424.76	342,326	939,111,484.00
June	133,002	145,928,374.00	0	0.00	337,024	973,046,610.09	383,782	1,026,777,170.00
July	135,582	148,146,300.00	19,502	22,833,600.00	394,717	1,146,164,048.50	421,745	1,070,860,220.00
August	165,588	165,777,610.00	32,641	39,471,550.00	369,647	1,072,332,934.80	414,775	1,115,347,799.00
September	122,123	132,920,490.00	43,235	51,837,050.00	343,819	1,021,968,322.06	369,246	972,718,720.00
October	121,655	135,730,930.00	112,411	125,443,240.00	342,877	1,024,091,248.67	427,388	1,008,686,143.00
November	135,816	140,437,990.00	119,238	128,922,180.00	350,611	999,682,252.54	412,426	929,693,064.00
December	154,171	158,109,759.00	128,922,180	168,201,190.00	337,934	967,229,346.26	389,804	913,028,114.00
TOTAL	1,599,420	1,718,348,863.00	129,576,300	892,945,872	4,159,095	11,864,232,509.71	4,416,637	11,543,243,418.00

Source: Kenya Railways Corporation

+ Revised

*Provisional

Table 19(e): Monthly Cargo Throughput at the port of Mombasa

	Metric tonnes												
	2019											2020	
	NOV	DEC	JAN	FEB	MAR	APR	MAY	JUN	JUL	AUG	SEP	OCT	Nov
Imports													
Dry General-Containerized	725,216	888,685	919,137	737,749	686,997	750,081	663,891	720,712	786,489	688,869	787,868	822,189	736,072
Dry General- Conventional	165,312	119,920	80,678	172,799	175,108	106,373	195,878	136,418	198,412	125,872	174,045	231,494	242,678
Dry Bulk	647,523	590,529	843,199	575,534	674,529	655,030	626,179	712,782	828,288	631,722	811,782	759,150	493,532
P.O.L ¹	598,956	667,575	700,928	611,591	559,695	650,052	304,141	549,192	619,260	596,029	579,402	629,406	693,395
Other Bulk Liquids	55,151	48,395	104,773	88,197	66,697	104,958	69,588	67,673	37,304	141,492	74,989	129,135	67,469
Sub-Total	2,192,158	2,315,104	2,648,715	2,185,870	2,163,026	2,266,494	1,859,677	2,186,777	2,469,753	2,183,984	2,428,086	2,571,374	2,233,146
Exports													
Dry General-Containerized	236,559	308,201	307,117	305,286	328,293	285,493	284,434	312,346	296,773	336,212	300,280	287,002	281,389
Dry General-Conventional	1,492	3,293	1,917	2,673	12,473	2,503	1,097	631	2,619	450	9,711	985	1,026
Dry Bulk	56,000	56,000	23,000	72,200	54,000	8,000	25,900	64,000	11,000	10,000	65,000	10,000	60,000
P.O.L ¹	1,200	1,600	6,375	900	901	1,780	-	750	4,500	5,600	2,600	1,702	2,600
Bunkers	2,658	1,409	4,675	2,686	-	-	1,940	2,424	1,297	2,901	702	1,502	1,502
Other Bulk Liquids	-	-	-	-	-	-	-	-	-	-	-	-	-
Sub-Total	297,909	370,502	343,084	383,745	395,667	297,776	313,371	380,151	316,189	355,163	378,293	301,191	346,517
Transshipment	208,870	162,621	169,373	160,131	140,819	129,470	152,779	179,463	213,553	144,687	138,613	160,270	230,772
Restows	10,623	10,494	8,564	5,208	8,282	9,712	13,749	6,019	12,650	6,007	8,397	10,028	8,402
Grand Total	2,709,559	2,858,721	3,169,736	2,734,954	2,707,794	2,703,452	2,339,576	2,752,410	3,012,145	2,689,841	2,953,389	3,042,863	2,818,837

Source: Kenya Ports Authority

¹Refers to Petroleum, Oil and Lubricants