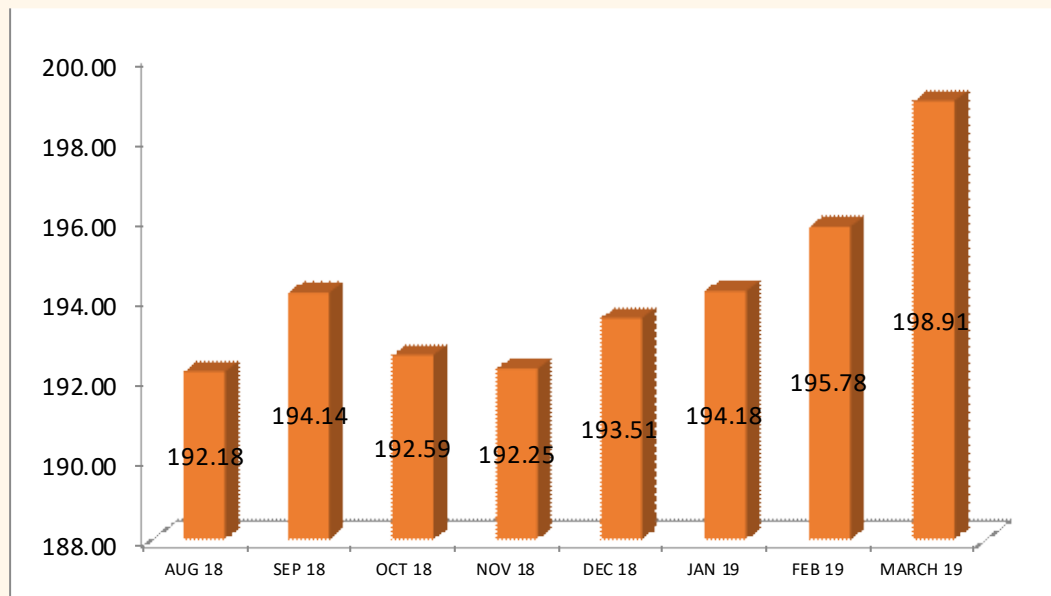


Leading Economic Indicators



MARCH 2019

Contents

Table 1(a): Kenya Consumer Price Indices	7
Table 1(b): Kenya Inflation rate	8
Table 2: Mean Foreign Exchange rates of Kenyan Shilling against Selected Major Currencies at the end of the Month	10
Table 3: Interest rate (%)	11
Table 4: Nairobi Securities Exchange	12
Table 5(a): Money Supply	14
Table 5(b): Gross Foreign Exchange Reserves	14
Table 6: Coffee Sales and Prices*	16
Table 7: Tea Production and Auction Prices	18
Table 8: Cane Deliveries	20
Table 9(a): Monthly Retail Prices for Dry Maize, 2018 (per Kg)	21
Table 9(b): Average Monthly Retail Prices for Dry Maize, 2019 (per Kg)	22
Table 9(C): Average Monthly Retail Prices for Dry Beans, 2018 (per Kg)	24
Table 9(d): Average Monthly Retail Prices for Dry Beans, 2019 (per Kg)	25
Table 10: Exports of Coffee and Tea	27
Table 11: Monthly Exports of Fresh Horticultural Produce	28
Table 12: External Trade	29
Table 13(a): Major Destinations of Domestic Exports	30
Table 13(b): Domestic Exports by Broad Economic Category	31
Table 14 (a) Major Origins of Imports	32
Table 14(b): Imports by Broad Economic Category	33
Table 14 (c): Mobile Money Transactions	34
Table 14(d): International trade in ICT	35
Table 15(a): Local Electricity Generation by Source	36
Table 15(b): Generation and Consumption of Electricity	37
Table 15(c): Consumption of Petroleum Fuels	38
Table 15(d): Average Retail Prices for Selected Fuel Products within Nairobi	39
Table 15(e): Average Retail Prices for Selected Fuels in Kenya	40
Table 15(f): Murban ADNOC Crude Oil Prices	41
Table 16: Value of Building Plans Approved	42
Table 17(a): Domestic Production of Sugar	43
Table 17(b): Production of Soft Drinks	44
Table 17(c): Production of Assembled Vehicles	45
Table 17(d): Production of Galvanized Sheets	46
Table 17(e): Cement Production and Consumption	47
Table 17(f): Milk Intakes in the Formal Sector	48
Table 18: Visitor Arrivals through J.K.I.A and M.I.A	49
Table 19(a): Jomo Kenyatta international airport-Embarked Passengers by Port of Destination	51
Table 19(b): Jomo Kenyatta international airport- Landed Passengers by Port of Origin	52
Table 19(c): New Vehicle Registration	53
Table 19(d): Passenger and Cargo Movement on the Standard Gauge Railway	54

LIST OF FIGURES

	Page Number
Fig. 1: Inflation rates	9
Fig. 2: End of Month Mean Exchange rate of Kenya Shillings against Major Selected Currencies	10
Fig. 3: Nairobi Securities Exchange 20 Share Index	13
Fig. 4: Coffee Sales at the Nairobi Coffee Exchange	17
Fig. 5: Tea Production	19
Fig. 6: Cane Deliveries	20
Fig. 7: Electricity Generation by Source	36
Fig. 8: Average Prices for Liquefied Petroleum Gas in Kenya ('000 KSh per 13 Kg cylinder)	40
Fig. 9: Milk Intake in the Formal Sector	48
Fig. 10: Visitor Arrivals through J.K.I.A and M.I.A	50

KEY HIGHLIGHTS

OVERVIEW

The Monthly Leading Economic Indicators report highlights changes in Consumer Price Indices (CPI) and inflation, interest and exchange rates. In addition, the report presents changes in indicators of international trade, agriculture, energy, manufacturing, building and construction, tourism and transport.

MACROECONOMIC INDICATORS

Consumer Price Index (CPI) increased from 195.78 points in February 2019 to 198.91 points in March 2019. The overall rate of inflation rose from 4.14 per cent to 4.35 per cent during the same period. In March 2019, the Kenyan Shilling appreciated against the major trading currencies except the US Dollar and the Sterling-Pound. The average yield rate for the 91-day Treasury bills, which is a benchmark for the general trend of interest rates dropped from 7.19 per cent in January 2019 to 7.02 per cent in February 2019, and the inter-bank rate dropped from 3.32 per cent to 2.51 per cent over the same period.

The Nairobi Securities Exchange (NSE) 20 share index decreased from 2,916 points in February 2019 to 2,846 points in March 2019, while the total number of shares traded rose from 425 million shares to 446 million shares during the same period. The total value of NSE shares traded increased from KSh 14.2 billion in February 2019 to KSh 15.9 billion in March 2019.

Broad money supply (M3), a key indicator for monetary policy formulation, decreased from KSh 3,344.28 million in January 2019 to 3,333.48 million in February 2019. On the other hand, the value of Gross Foreign Exchange Reserves decreased from KSh 1,179.21 billion in January 2019 to KSh 1,174.73 billion in February 2019 while the value of Net Foreign Exchange Reserves rose from KSh 708.64 billion in January 2019 to 713.05 billion in February 2019.

AGRICULTURE



The quantity of coffee auctioned at the Nairobi Coffee Exchange was 4,057.03 in March 2019 while the average auction price stood at KSh 298.47 per kilogram over the same period. The quantity of produced tea decreased from 31,445.08 MT in February 2019 to 26,461.70 MT in March 2019. The price of processed tea dropped from KSh 216.03 in February 2019 to KSh 214.01 in March 2019 per kilogram. The

quantity of cane deliveries decreased from 535.52 thousand tonnes in January 2019 to 473.11 thousand tonnes in February 2019.

The quantity of cut-flower horticultural exports in March 2019 was 16,463.44 MT while its value of exports was KSh 8,861.73 million during the same period. The volume of vegetable exports decreased from 7,016.72 MT in February 2019 to 5,357.63 MT in March 2019. The value of vegetable exports also decreased from KSh 1,869.56 million to KSh 1,826.03 million during the same period.

INTERNATIONAL TRADE

Volume of trade dropped from KSh 192.19 billion in February 2019, to KSh 177.554.63 billion in March 2019. The value of total exports increased to KSh 52.69 billion in March 2019 from 50.92 billion in February 2019 while the value of imports also dropped to KSh 124.86 billion in March 2019 from 141.27 billion in February 2019. Domestic exports by Broad Economic Category (BEC) indicated that food and beverages was the main export category in March 2019 accounting for 44.38 per cent of exports, while non-food industrial supplies accounted for 23.41 per cent of the total exports.

Quantity of coffee exported decreased from 4,567.37 MT in February 2019 to 4,351.34 MT in March 2019, while its value rose from KSh 1,903.18 million to KSh 2,256.18 million over the same period. The quantity of tea exported increased from 41,026.62 MT in February 2019 to 42,457.17 MT in March 2019. The value of exported tea also increased from KSh 9,638.24 million to KSh 9,910.41 million over the same period.

Imports by BEC indicate that non-food industrial supplies was the main import category in March 2019 with a share of 37.9 per cent. Machinery & other capital equipment; fuel and lubricants; and transport equipment constituted 14.7, 17.41 and 9.35 per cent of the total value of imports, respectively. The share of foods and beverages imports accounted for 12.0 per cent of the total imports.

ENERGY



Total local electricity generation increased from 880.14 million KWh in February 2019 to 979.02 million KWh in March 2019. In the international market, the price of Murban crude oil increased from an average of US Dollars 65.64 per barrel in February 2019 to US Dollars 68.60 per barrel in March 2019.

The national average domestic retail oil prices of motor gasoline premium rose from KSh 101.13 per litre in February 2019 to KSh 102.13 in March 2019. The price of light diesel oil rose from KSh 96.83 in February 2019 to retail at KSh 97.47 in March 2019. On the other hand, the average price for Kerosene also rose to retail at KSh 100.31 in March 2019 from KSh 97.83 in February 2019. Charcoal prices averaged KSh 140.42 per 4KG tin in March 2019. The price of a 13-Kg cylinder of gas averaged KSh 2,191.84 in March 2019.

MANUFACTURING, BUILDING AND CONSTRUCTION



The quantity of cement produced increased from 470,146 MT in February 2019 to 507,037 MT in March 2019. Consumption of cement rose from 469,809 MT in February 2019 to 505,465 MT in March 2019. Sugar production decreased from 53,060 Metric tonnes in January 2019 to 46,139 Metric tonnes in February 2019. Production of assembled vehicles decreased from

476 units in November 2018 to 327 units in December 2019. Milk uptake in the formal sector dropped from 46.55 million litres in February 2019 to 44.03 million litres in March 2019.

ICT, TOURISM AND TRANSPORT



The total number of mobile money transactions was 154.24 million in January 2019 while their value stood at KSh 368.02 billion over the same period. The value of imports for telecommunication equipment rose from KSh 2,314.89 million in December 2018 to KSh 4,480.02 million in January 2018.

The total number of visitors arriving through Jomo Kenyatta (JKIA) and Moi International Airports (MIA) increased to 136,225 in December 2018 from 125,323 persons in November 2018. The number of passengers who landed at Jomo Kenyatta International Airport (JKIA) decreased from 255,571 in January 2019 to 229,737 in February 2019, and passengers who embarked also decreased from 150,836 persons to 121,096 persons during the same period. The total number of vehicles registered in December 2018 stood at 26,991 out of which 5,814 were Station Wagons.

Table 1(a): Kenya Consumer Price Indices
Kenya CPI: Base period February 2009=100

Group	Nairobi				Rest of Urban Areas	Kenya CPI
	Lower Income	Middle Income	Upper Income	Nairobi Combined		
2018						
January.....	191.45	159.79	156.07	182.48	187.57	185.47
February.....	194.37	160.71	157.31	184.85	190.20	188.00
March.....	198.16	161.43	157.56	187.76	192.62	190.62
April.....	200.32	161.79	157.57	189.41	195.82	193.18
May.....	202.10	163.00	157.92	191.00	197.89	195.05
June.....	200.15	162.99	159.61	189.66	195.88	193.31
July.....	197.39	162.48	159.58	187.54	194.43	191.59
August.....	195.70	164.10	163.82	186.87	195.90	192.18
September....	196.50	165.96	166.18	187.99	198.44	194.14
October.....	193.99	165.44	163.93	185.96	197.24	192.59
November.....	194.06	165.92	164.01	186.14	196.53	192.25
December.....	195.33	167.16	166.77	187.46	197.75	193.51
2019						
January.....	197.09	168.04	166.21	188.91	197.87	194.18
February.....	199.65	168.68	165.89	190.90	199.19	195.78
March.....	204.40	170.25	167.16	194.75	201.83	198.91

Notes

1. Nairobi Lower Income group - Households spending less than KSh 23,670 in October 2005

2. Nairobi Middle Income Group- Households spending between KSh 23,671 to KSh 119,999 in October 2005

3. Nairobi Upper Income Group - Households spending above KSh 120,000 in October 2005

Rest of Urban areas includes Mombasa, Malindi, Machakos, Nyeri, Thika, Nakuru, Kisii, Kisumu, Eldoret, Nyahururu, Garissa and Bungoma.

Table 1(b): Kenya Inflation rate

Period	Inflation Rates					
	Nairobi				Rest of Urban Areas	Kenya CPI
	Lower Income	Middle Income	Upper Income	Combined		
2018						
January.....	6.49	6.35	3.91	6.37	3.80	4.83
February.....	5.75	5.77	4.18	5.70	3.62	4.46
March.....	5.36	5.37	4.15	5.33	3.40	4.18
April.....	4.36	4.19	4.14	4.32	3.33	3.73
May.....	4.85	4.61	4.23	4.78	3.40	3.95
June.....	5.52	5.64	5.75	5.55	3.43	4.28
July.....	5.30	5.38	5.46	5.32	3.71	4.35
August.....	3.60	5.77	7.76	4.19	3.94	4.04
September.....	4.40	6.82	9.42	5.07	6.13	5.70
October.....	3.07	6.02	7.15	3.82	6.69	5.53
November.....	3.42	6.18	6.93	4.11	6.59	5.58
December.....	3.50	6.17	7.86	4.21	6.73	5.71
2019						
January.....	2.94	5.16	6.50	3.53	5.50	4.70
February.....	2.72	4.96	5.46	3.27	4.73	4.14
March.....	3.15	5.46	6.10	3.72	4.78	4.35

Fig. 1: Inflation rates

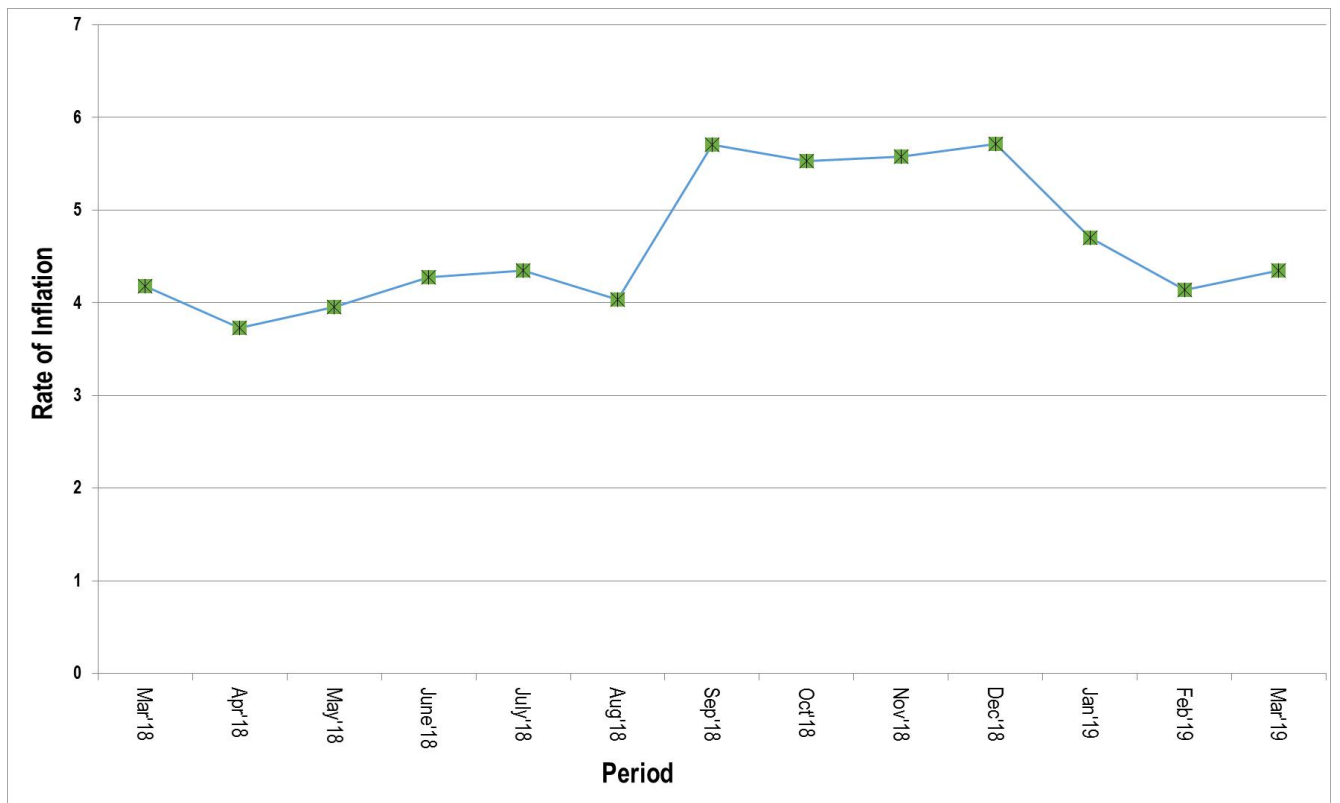


Table 2: Mean Foreign Exchange rates of Kenyan Shilling against Selected Major Currencies at the end of the Month

Year	2018												2019		
Currency	Jan	Feb	March	April	May	June	July	Aug	Sep	Oct	Nov	Dec	Jan	Feb	Mar
1 US Dollar.....	102.92	101.40	101.18	100.61	100.67	101.00	100.67	100.61	100.83	101.08	102.36	102.29	101.58	100.23	101.36
1 Pound Sterling.....	141.95	141.72	141.24	141.86	135.67	134.24	132.58	129.68	131.65	131.60	132.08	129.74	130.76	130.29	132.29
1 Euro.....	125.37	125.29	124.68	123.65	118.93	117.97	117.60	116.25	117.66	116.20	116.35	116.45	115.95	113.68	113.51
100 Japanese Yen.....	92.73	93.86	95.33	93.57	91.74	91.90	90.35	90.67	90.17	89.59	90.35	90.99	93.18	90.89	90.26
1 SA Rand.....	8.42	8.57	8.54	8.33	8.02	7.62	7.50	7.18	6.81	7.00	7.25	7.22	7.29	7.27	6.87
USHS/KES.....	35.37	35.87	36.16	36.73	37.00	38.05	37.41	37.06	37.70	37.40	36.54	36.38	36.45	36.64	36.92
TSHS/KES.....	21.81	22.20	22.31	22.59	22.67	22.54	22.61	22.71	22.67	22.66	22.46	22.49	22.72	23.23	23.36

Source: Central Bank of Kenya

Fig. 2: End of Month Mean Exchange rate of Kenya Shillings against Major Selected Currencies

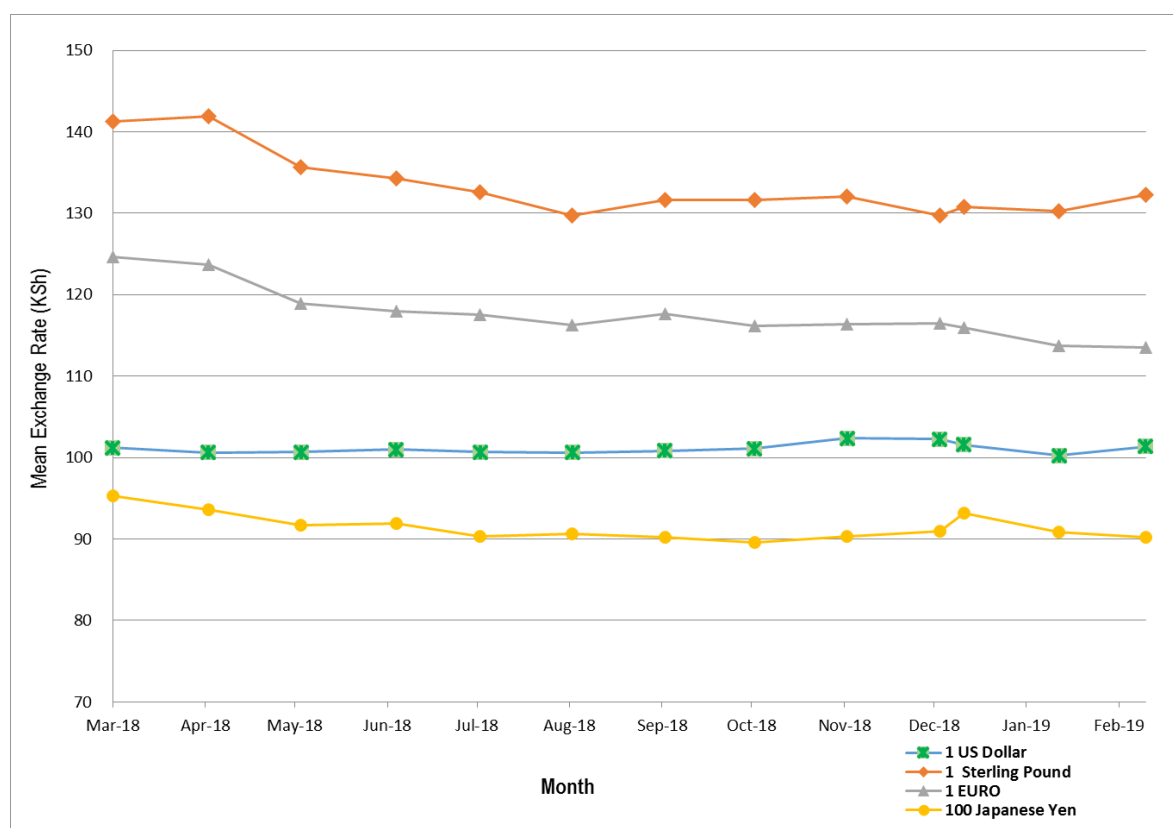


Table 3: Interest rate (%)

Month/Year	Average Yield Rates 91 – Days Treasury Bills	Central Bank Rate	Rates for Commercial Banks Loans and Advances (Weighted)	Overdraft Rates	Average Deposit Rate	Inter – Bank Rates	Savings (Commercial Banks Rates)
2018							
January.....	8.04	10.00	13.65	13.61	8.26	6.21	6.97
February.....	8.03	10.00	13.68	13.75	8.25	5.12	7.01
March.....	8.02	9.50	13.49	13.40	8.16	4.90	6.85
April.....	8.00	9.50	13.24	13.29	8.17	5.38	6.72
May.....	7.96	9.50	13.25	13.30	8.08	4.70	6.64
June.....	7.87	9.50	13.22	13.23	8.04	5.03	6.60
July.....	7.69	9.00	13.10	13.16	8.01	4.82	6.53
August.....	7.64	9.00	12.78	12.90	7.78	6.52	6.52
September...	7.64	9.00	12.66	12.52	7.76	4.28	6.33
October.....	7.56	9.00	12.61	12.42	7.63	3.48	5.70
November...	7.36	9.00	12.55	12.11	7.41	4.09	5.38
December....	7.34	9.00	12.51	12.17	7.41	8.15	5.13
2019							
January.....	7.19	9.00	12.50	12.15	7.34	3.32	5.14
February.....	7.02	9.00	12.47	12.13	7.28	2.51	5.16

Source: Central Bank of Kenya

Table 4: Nairobi Securities Exchange

Month	Number of Transactions	Number of Shares (Million)	Value of Shares (Million KSh)	NSE 20 Share Index
2018				
January.....	25,591	862	20,340	3,737
February.....	24,783	572	17,919	3,750
March.....	32,645	704	22,890	3,854
April.....	28,483	449	15,076	3,735
May.....	30,196	677	18,377	3,333
June.....	24,798	453	13,688	3,286
July.....	24,360	323	9,736	3,320
August.....	25,279	329	10,243	3,203
September.....	25,311	392	11,950	2,876
October.....	26,295	843	16,890	2,820
November.....	22,252	407	10,713	2,797
December.....	17,640	320	7,830	2,801
2019				
January.....	24,798	557	16,200	2,983
February.....	23,444	425	14,173	2,916
March.....	20,808	446	15,917	2,846

Source: Nairobi Securities Exchange Limited

Base Jan 1966=100

Fig. 3: Nairobi Securities Exchange 20 Share Index

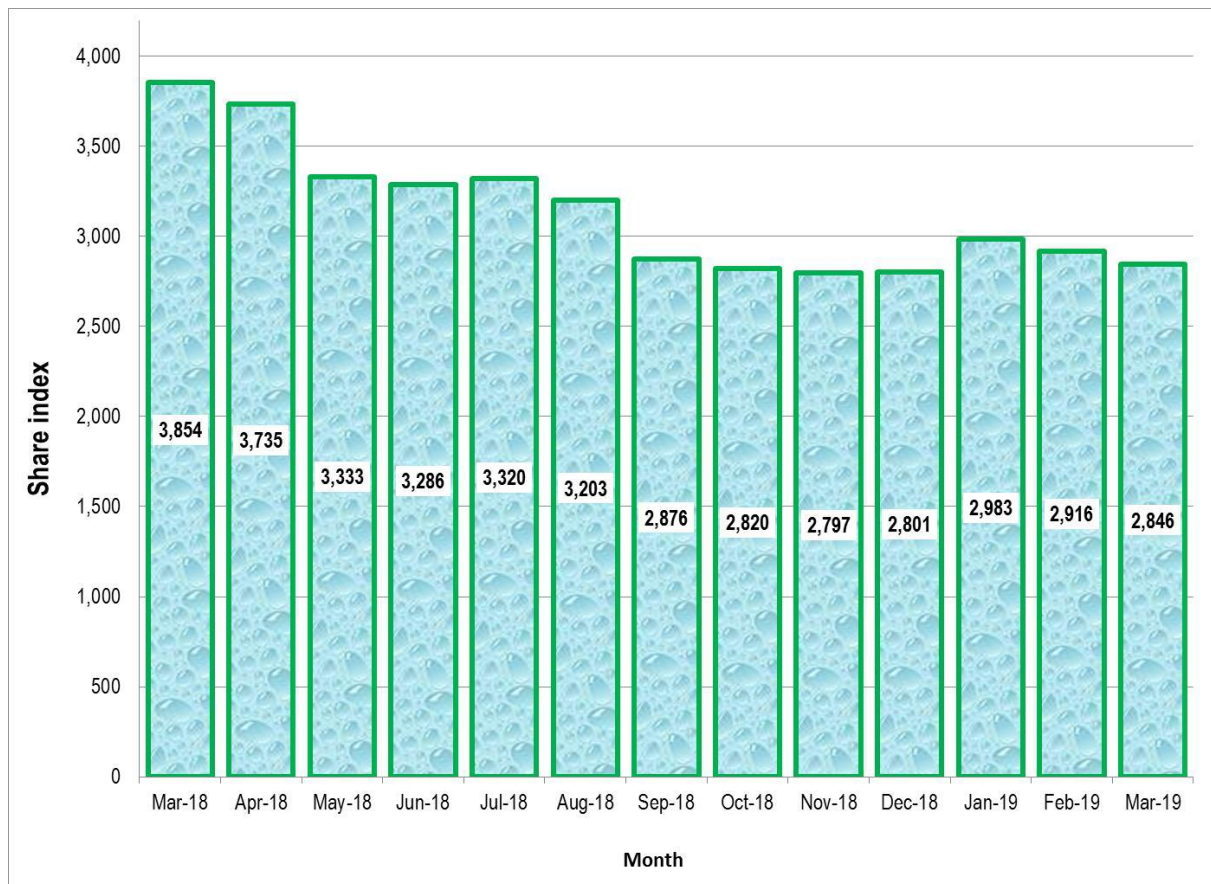


Table 5(a): Money Supply

KSh Million

As at end of month	Money (M1)*	Quasi – Money	Total (M2)***	Foreign currency deposits ¹	Broad Money (M3)****	% Change
2018						
January.....	1,364,317	1,179,325	2,543,642	482,460	3,026,102	0.50
February.....	1,385,152	1,176,134	2,561,286	462,231	3,023,516	-0.09
March.....	1,362,630	1,198,308	2,560,938	474,458	3,035,395	0.39
April.....	1,406,995	1,191,529	2,598,525	476,288	3,074,813	1.30
May.....	1,401,461	1,219,585	2,621,046	521,025	3,142,070	2.19
June.....	1,426,664	1,255,214	2,681,878	580,762	3,262,639	3.84
July.....	1,435,761	1,269,461	2,705,222	573,568	3,278,791	0.50
August.....	1,393,650	1,305,108	2,698,759	560,966	3,259,725	-0.58
September.....	1,380,086	1,304,835	2,684,921	576,160	3,261,081	0.04
October.....	1,436,882	1,282,904	2,719,786	553,218	3,273,004	0.37
November.....	1,410,001	1,289,430	2,699,431	569,611	3,269,041	-0.12
December.....	1,477,937	1,278,036	2,755,973	581,859	3,337,832	2.10
2019						
January.....	1,464,971	1,292,668	2,757,639	586,644	3,344,283	0.19
February.....	1,461,012	1,287,545	2,748,557	584,920	3,333,476	-0.32

Source: Central Bank of Kenya

¹ Currency in circulation less cash in banks plus all demand deposits except those of National & County government, Banks, non-residents and foreign currency deposits

** All other deposits in commercial banks, except those of National government.

***Broad money (M2) is the sum of M1, Quasi money in Banks and Quasi money in NBFIs..

**** Broad Money (M3) includes M2 and Foreign currency deposits

M2=(M1+QM-NBFIs)

Table 5(b): Gross Foreign Exchange Reserves

KSh Million*							
Month	Central Monetary Authority		Total	Foreign Assets		Gross Total	Net of Foreign Exchange Liabilities ^
	Central Bank	National Government**		Commercial Banks	NBFI		
2018							
January	763,804	2,117	765,921	221,727	253	987,901	527,201
February	763,623	2,102	765,725	226,187	1,742	993,654	517,758
March	932,536	2,081	934,617	251,769	269	1,186,655	701,293
April	946,662	2,046	948,708	257,550	1,477	1,207,735	725,221
May	939,174	2,036	941,210	267,456	1,608	1,210,275	726,442
June	901,467	2,036	903,504	318,094	229	1,221,826	760,510
July	915,171	1,998	917,169	317,414	747	1,235,331	759,525
August	893,032	1,997	895,029	310,616	339	1,205,984	735,056
September	885,090	1,995	887,085	335,009	430	1,222,524	745,193
October	862,908	1,992	864,900	317,149	172	1,182,221	687,480
November	846,765	2,009	848,774	333,312	168	1,182,254	693,798
December	849,909	2,009	851,917	334,655	372	1,186,944	716,108
2019							
January	859,627	1,996	861,623	317,362	226	1,179,212	708,644
February	855,490	1,981	857,471	316,684	571	1,174,726	713,045

Source: Central Bank of Kenya

* Includes encumbered reserves

**National Government includes reserve position in the Fund and deposits with Crown Agents.

Table 6: Coffee Sales and Prices*

Month	2018			2019***		
	QUANTITY (MT)	PRICE (\$ /kg)	PRICE (Ksh /kg)	QUANTITY (MT)	PRICE (\$ /kg)	PRICE (Ksh /kg)
January.....	5,111.90	5.13	527.24	4,166.77	4.46	452.57
February.....	5,832.22	5.69	577.36	5,723.84	4.49	449.47
March.....	4,913.15	4.73	478.14	4,057.03	2.97	298.47
April.....	4,194.24	3.03	304.59			
May.....	4,619.51	2.15	216.55			
June**.....	-	-	-			
July.....	1,221.20	3.54	356.73			
August.....	2,234.56	3.35	337.30			
September.....	2,299.09	2.86	288.68			
October.....	2,493.24	3.17	320.55			
November.....	2,334.41	3.60	368.16			
December.....	1,577.04	3.95	403.58			
Annual.....	36,830.56	3.43	348.24	4,649.21	3.97	400.17

Source: Coffee Directorate

* Auction Price

NB: MT denotes Metric Tonnes

*** Provisional

** Nairobi Coffee Exchange was in recess for most of June 2018

Fig. 4: Coffee Sales at the Nairobi Coffee Exchange

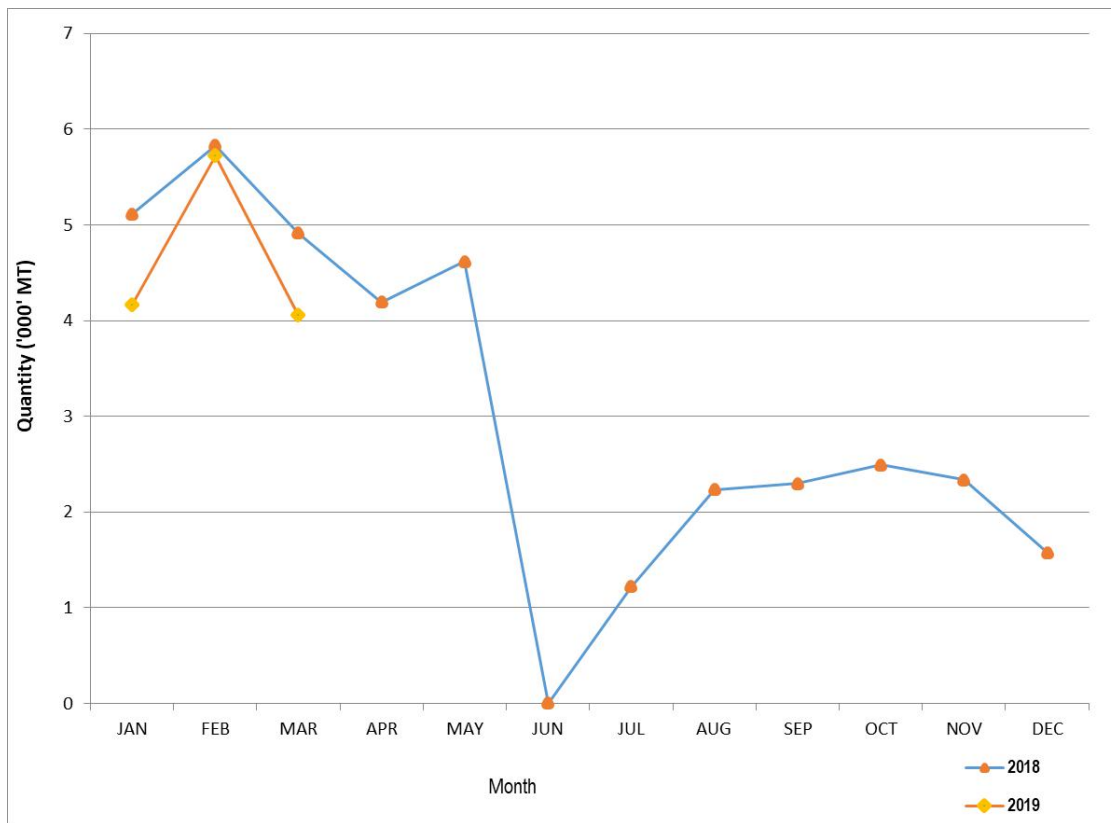


Table 7: Tea Production and Auction Prices

Months	2018			2019*		
	QUANTITY (MT)	PRICE (\$/Kg)	PRICE (KSh/Kg)	QUANTITY (MT)	PRICE (\$/Kg)	PRICE (KSh/Kg)
January.....	40,834.42	2.96	304.42	48,386.47	2.30	233.94
February.....	27,939.13	2.98	302.28	31,445.08	2.16	216.03
March.....	30,986.83	2.81	283.89	26,461.70	2.13	214.01
April.....	44,579.88	2.67	268.15			
May.....	43,355.79	2.61	262.95			
June.....	43,299.06	2.55	257.40			
July.....	35,278.16	2.49	250.84			
August.....	37,432.60	2.40	241.20			
September.....	42,530.86	2.41	243.34			
October.....	49,283.64	2.42	244.21			
November.....	45,648.57	2.36	241.52			
December.....	51,829.79	2.30	235.55			
Annual.....	492,998.72	2.58	261.31	106,293.25	6.59	663.98

Source: Tea Directorate

MT denotes Metric Tonnes

*Provisional

Fig. 5: Tea Production



Table 8: Cane Deliveries

000 Metric Tonnes					
Month	2015	2016	2017	2018	2019*
January.....	647.34	670.46	581.60	687.52	535.52
February.....	585.21	640.51	519.40	555.88	473.11
March.....	645.07	757.06	470.73	445.17	
April.....	521.26	576.69	304.79	330.57	
May.....	529.33	514.66	231.97	283.90	
June.....	544.01	629.67	248.94	312.09	
July.....	558.98	609.30	244.69	377.37	
August.....	585.74	564.44	173.26	440.10	
September.....	619.35	568.36	290.70	434.91	
October.....	550.81	568.83	452.81	497.93	
November.....	496.55	540.69	571.21	475.53	
December.....	565.57	520.17	521.65	418.89	
Total.....	6,849.22	7,160.84	4,611.75	5,259.85	

Source : Sugar Directorate

* Provisional

Fig. 6: Cane Deliveries

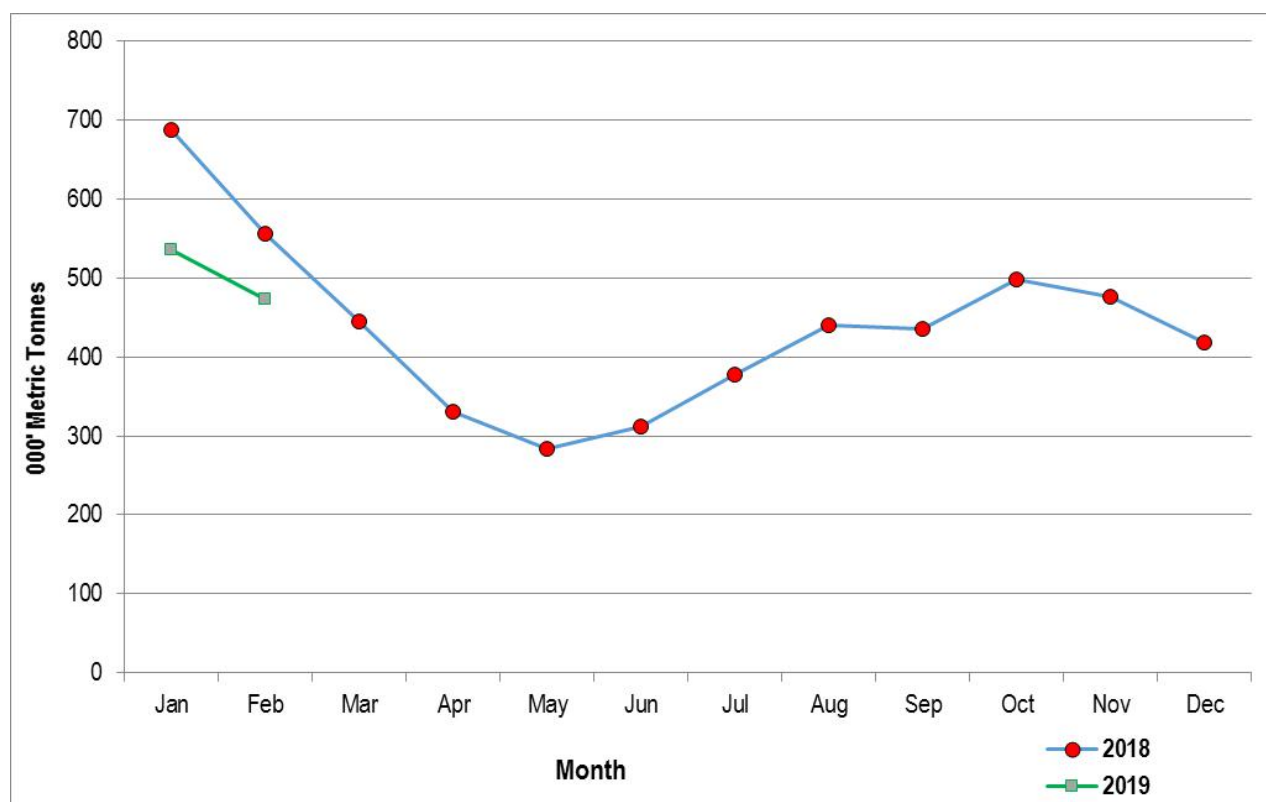


Table 9(a): Average Monthly Retail Prices for Dry Maize, 2018 (per Kg)

Month/Town	Jan	Feb	Mar	Apr	May	June	July	Aug	Sep	Oct	Nov	Dec
Akala.....	36.57	-	-	-	-	-	-	34.31	34.53	33.61	39.22	38.84
Bomet.....	34.50	32.00	32.00	31.00	27.60	31.00	32.00	28.00	28.50	25.60	26.00	-
Bondo.....	32.22	29.54	27.81	27.18	29.68	29.62	27.92	-	-	-	-	-
Bumala.....	-	-	-	-	40.48	31.24	-	-	-	-	-	-
Bungoma Town.....	-	-	-	-	-	-	28.01	22.07	-	-	-	-
Bura Tana.....	39.00	36.25	40.00	50.00	48.33	50.00	46.67	50.00	-	-	-	-
Burra.....	54.55	54.55	60.00	60.00	54.55	54.55	54.55	-	-	-	-	-
Burn Forest.....	28.00	28.00	28.00	35.00	47.22	35.00	35.00	30.63	-	25.00	25.00	21.25
Busia Town.....	-	-	-	-	31.82	30.77	-	-	-	-	-	-
Butere.....	29.17	29.17	30.00	29.50	23.60	24.00	22.71	-	-	-	-	-
Chepsanoi.....	32.40	29.04	30.79	31.69	31.03	31.20	25.68	23.35	23.08	-	21.80	22.53
Cheptula.....	33.73	33.33	33.33	33.33	30.95	29.76	26.98	23.81	-	23.81	23.81	24.60
Daraja Mbili.....	-	29.09	31.17	-	-	-	-	28.83	-	23.81	25.30	24.93
Eldoret.....	-	30.50	32.00	38.93	41.89	40.00	40.00	35.63	-	25.00	25.00	25.00
Embu Town.....	40.00	40.91	40.91	36.36	31.82	32.99	30.50	-	24.71	23.34	22.73	26.14
Endebess.....	25.00	25.00	25.00	25.00	-	-	-	-	-	-	-	-
Engare.....	-	-	-	-	-	32.00	38.00	-	16.00	17.60	19.00	17.00
Gakoromere.....	38.89	37.41	38.20	36.42	32.59	33.33	33.33	27.78	-	27.78	31.94	33.33
Garissa Town.....	-	-	-	-	-	50.00	55.71	60.00	60.00	50.00	50.00	50.00
Gatundu.....	-	-	-	50.00	50.00	50.00	44.58	43.13	-	-	-	-
Gikomba.....	52.38	55.00	60.00	60.00	57.14	57.14	57.14	-	-	-	-	-
Githurai.....	-	-	-	55.00	54.00	55.00	53.33	51.25	-	-	-	-
Harambee.....	-	-	-	-	-	-	-	-	-	19.05	-	-
Hola.....	38.75	36.25	36.67	50.00	50.00	50.00	50.00	50.00	-	-	-	-
Homabay.....	-	-	-	-	-	-	27.57	21.74	-	-	-	-
Iciara.....	-	-	-	-	-	-	-	-	18.47	17.17	21.40	26.19
Isiolo Town.....	-	-	-	50.00	50.00	-	-	46.75	48.50	39.00	33.33	32.50
Iten.....	-	35.00	33.33	31.88	28.73	38.06	27.24	33.33	-	20.28	18.73	15.63
Kabarnet.....	33.33	38.89	-	44.44	44.44	41.67	38.89	38.89	-	-	-	-
Kajiado.....	-	50.00	45.00	50.00	50.00	46.00	43.64	50.00	50.00	-	40.00	46.00
Kakamega.....	35.00	35.00	35.00	37.50	36.00	33.73	27.50	-	-	-	-	-
Kalundu.....	42.50	35.00	35.00	35.00	30.00	30.00	30.00	30.00	32.50	-	26.67	26.67
Kandara.....	-	-	-	-	-	-	-	-	-	40.00	-	-
Kangemi.....	52.50	60.00	60.00	57.14	52.38	52.38	52.38	-	-	-	-	-
Kapsabet.....	31.53	30.79	30.49	31.08	30.64	30.41	24.44	23.39	21.43	-	20.65	22.27
Karatina.....	44.72	39.83	38.10	38.14	42.47	41.98	40.95	42.37	-	30.81	21.76	15.45
Kawangware.....	50.00	52.50	52.50	55.00	55.00	55.00	55.00	-	-	-	-	-
Kegonga.....	23.46	24.64	25.00	28.26	27.54	26.09	27.42	26.09	-	22.83	-	22.28
Kehacha.....	28.26	26.63	25.00	29.13	27.17	26.09	29.45	24.77	-	23.91	22.83	21.74
Kerugoya.....	45.54	42.63	40.95	40.26	36.26	32.27	31.82	30.95	29.52	25.11	33.18	33.37
Kiambu.....	-	-	-	45.00	45.00	43.75	45.00	43.75	-	-	-	-
Kianjai.....	-	38.34	33.61	36.11	36.67	27.78	27.78	24.44	-	27.78	27.78	-
Kibirigo.....	-	-	-	-	31.82	-	-	29.36	-	-	23.91	-
Kiboswa.....	39.13	-	-	-	-	-	-	-	-	-	-	-
Kilgoris.....	-	-	-	23.00	20.40	21.33	24.00	-	21.00	20.00	17.00	26.00
Kimulot.....	32.00	32.00	32.00	28.00	28.00	-	28.00	28.00	24.00	24.00	25.00	-
Kipkaren.....	-	28.00	28.00	34.22	42.56	35.00	34.58	30.63	-	25.00	25.00	21.25
Kiriaini.....	-	-	-	-	35.00	35.00	33.75	26.25	25.00	25.00	28.75	30.00
Kiriiri.....	-	-	-	-	-	-	-	-	25.72	22.77	25.15	27.77
Kitale.....	29.17	29.17	29.17	29.17	28.94	26.39	27.08	24.40	-	37.60	-	-
Kongowea.....	41.25	42.50	41.25	40.00	40.00	-	-	-	32.50	34.00	31.25	35.00
Korokocho.....	52.38	52.38	57.14	60.00	60.00	60.00	60.00	-	-	-	-	-
Kutus.....	37.27	37.50	36.17	35.83	37.23	31.16	31.82	32.72	31.49	31.13	33.75	33.75
Kwale.....	48.75	50.00	51.40	55.00	54.75	55.00	45.00	40.00	-	40.00	40.00	46.50
Limuru.....	-	-	-	41.67	43.33	45.00	45.00	45.00	-	-	-	-
Lodwar.....	63.75	61.21	61.91	60.00	56.90	-	-	-	-	-	-	-
Machakos Town.....	-	40.00	40.00	40.00	40.00	38.33	40.00	37.50	40.00	35.00	30.00	30.00
Majengo.....	53.33	51.67	46.25	45.00	42.00	-	-	-	41.25	32.00	40.00	40.00
Makuyu.....	-	-	-	40.00	36.25	35.00	34.38	32.50	27.50	-	29.15	25.00
Marsabit Town.....	38.19	39.25	41.20	40.00	40.00	40.00	40.00	40.00	40.00	40.00	40.00	35.00
Mbale.....	38.10	38.10	33.33	33.33	33.33	30.95	26.98	23.81	-	21.43	21.43	23.81
Migori.....	30.43	28.57	26.36	30.43	28.69	28.26	29.13	23.14	-	22.17	21.74	23.37
Mulot.....	30.00	28.00	31.00	32.00	28.00	26.00	26.00	23.00	22.50	23.60	24.00	24.00
Mumias.....	29.17	29.69	31.77	32.29	27.03	28.00	23.44	-	-	-	-	-
Mundata.....	-	-	-	29.76	28.97	28.57	26.98	23.81	-	23.02	24.29	23.81
Muthithi.....	-	-	-	-	35.00	33.75	32.50	30.00	22.50	-	26.25	30.00
Muthurwa.....	40.67	39.07	37.56	52.50	55.00	55.00	55.00	-	-	-	-	-
Muthurwa Narok.....	-	-	-	40.00	33.20	32.00	36.67	-	-	40.80	40.00	16.00
Mwembe Tayari.....	51.25	51.25	46.25	45.00	41.00	-	-	-	40.00	36.00	50.00	50.00
Nakuru Town.....	50.00	55.00	53.75	61.78	64.45	62.97	32.10	27.78	27.78	-	22.22	33.33
Nanyuki.....	-	44.12	52.57	40.70	58.94	44.12	41.77	38.36	-	39.00	34.01	33.26
Ndaragwa.....	-	54.41	-	-	-	-	-	-	-	-	-	-
Ngiya.....	32.21	30.45	-	27.27	28.40	29.17	27.53	34.20	33.99	34.02	38.46	38.85
Ndondori.....	-	-	-	40.00	-	-	-	-	-	-	-	-
Nyabite.....	-	-	-	-	30.43	-	29.38	26.09	-	-	22.92	-
Nyahururu.....	-	60.99	52.72	44.44	64.89	55.65	49.92	27.78	-	-	-	27.72
Nyeri.....	50.00	50.00	47.50	42.37	42.86	40.48	42.86	40.97	-	27.92	22.67	15.93
Oi Kalou.....	-	59.05	60.00	50.00	50.00	50.00	50.00	50.00	-	50.00	35.00	41.67
Oyugis.....	-	-	-	-	-	-	25.00	-	-	-	-	-
Riochanda.....	-	-	-	-	25.00	-	24.78	20.58	-	-	23.91	-
Runyenjes.....	38.96	38.07	36.36	31.82	29.55	27.70	27.19	-	25.00	19.54	21.86	22.73
Sagana.....	40.53	42.57	43.03	38.24	38.22	35.00	-	35.58	32.46	26.02	33.56	34.17
Sega.....	53.00	51.25	45.00	45.00	40.00	-	-	-	42.50	34.00	37.50	36.25
Siakago.....	41.82	43.18	43.18	37.88	37.66	31.82	27.92	-	25.03	22.76	23.27	26.45
Siaya.....	37.70	35.67	33.27	-	-	35.90	30.30	-	33.99	33.83	38.26	38.85
Sibanga.....	27.08	27.08	29.17	29.17	-	-	-	-	-	-	-	-
Soko Mjianga.....	-	-	-	30.43	27.18	-	26.09	21.74	21.74	-	-	-
Sotik.....	36.00	32.00	32.00	33.00	30.40	28.00	29.60	30.00	25.00	24.00	24.00	24.00
Tala.....	-	35.00	-	35.00	30.00	30.00	31.00	30.00	30.00	32.50	31.25	30.00
Thika.....	38.00	45.00	-	48.33	45.00	47.50	46.67	45.00	-	-	-	-
Toi.....	52.50	52.50	60.00	60.00	57.14	57.14	57.14	-	-	-	-	-
Turbo.....	28.00	28.00	28.00	35.00	41.67	35.00	35.00	30.00	-	25.00	25.00	21.25
Turkana.....	83.33	62.70	69.64	60.00	-	51.39	70.31	-	-	-	40.00	50.00
Ukunda.....	50.00	50.00	55.00	50.00	53.60	55.00	48.33	40.00	-	41.00	42.50	43.00
Unguja.....	31.99	29.22	30.36	25.95	-	30.52	28.60	-	34.62	34.10	37.72	39.25
Voi.....	-	-	-	-	-	-	30.00	-	-	-	-	-
Wajir Town.....	-	-	-	-	-	-	-	90.00	-	-	-	-
Wote.....	-	-	-	30.00	-	28.00	28.00	28.86	28.00	-	27.00	28.50
Total.....	40.14	40.00	40.04	40.29	39.71	38.49	36.37	34.29	30.83	29.21	29.23	29.86

-Data not Available

Table 9(b): Average Monthly Retail Prices for Dry Maize, 2019 (per Kg)

Month/Town	Jan	Feb	Mar
Akala.....	-	-	-
Bomet.....	30.50	32.00	32.00
Bondo.....	31.84	-	-
Bumala.....	-	-	-
Bungoma Town..	-	-	-
Bura Tana.....	-	50.00	-
Burma.....	-	50.00	-
Burn Forest.....	20.00	21.43	25.00
Busia Town.....	-	-	-
Butere.....	-	-	-
Chepsonoi.....	23.12	22.77	23.54
Cheptula.....	25.00	27.38	28.57
Daraja Mbili.....	27.92	26.96	25.57
Eldoret.....	25.00	27.00	30.00
Embu Town	27.27	25.00	22.73
Endebess.....	-	-	-
Engare.....	-	-	-
Gakoromere.....	33.33	33.33	33.33
Garissa Town....	60.00	60.00	50.00
Gatundu.....	33.75	40.00	22.50
Gikomba.....	-	-	-
Githurai.....	46.67	45.00	40.00
Harambee.....	-	-	-
Hola.....	-	50.00	-
Homabay	-	-	-
Iciara	22.24	22.74	22.73
Isiolo Town.....	30.00	30.00	31.67
Iten.....	25.00	25.00	26.11
Kabarnet.....	-	30.00	33.33
Kajiado	44.00	49.17	50.00
Kakamega.....	-	-	-
Kalundu.....	25.00	25.00	24.50
Kandara.....	-	-	-
Kangemi	-	-	-
Kapsabet.....	22.74	23.79	24.43
Karatina.....	26.24	-	-
Kawangware.....	-	-	-
Kegonga.....	21.74	21.74	-
Kehacha.....	23.19	21.96	22.46
Kerugoya.....	32.73	31.85	32.58
Kiambu.....	45.00	45.00	43.33
Kianjai.....	31.48	24.60	23.61
Kibirigo.....	25.00	26.09	26.09
Kiboswa.....	-	-	-
Kilgoris	-	-	-

Table 9(b) Continued: Average Monthly Retail Prices for Dry Maize, 2019 (per Kg)

Month/Town	Jan	Feb	Mar
Kimulot.....	24.00	25.00	28.00
Kipkaren.....	20.00	22.50	25.00
Kiriaini.....	-	30.00	30.00
Kiritiri.....	27.92	25.84	27.14
Kitale.....	20.83	26.56	25.00
Kongowea.....	-	-	-
Korokocho.....	-	-	-
Kutus.....	30.88	32.76	28.21
Kwale.....	46.00	46.25	40.00
Limuru.....	40.00	-	45.00
Lodwar.....	-	-	-
Machakos Town.	30.00	30.00	30.00
Majengo.....	-	-	-
Makuyu.....	25.00	30.00	30.00
Marsabit Town ...	-	-	-
Mbale.....	23.81	25.00	30.65
Migori.....	35.60	21.74	22.17
Mulot.....	26.00	23.00	20.00
Mumias.....	-	-	-
Mundeta.....	23.81	23.81	23.81
Muthithi.....	30.00	28.75	30.00
Muthurwa.....	-	-	-
Muthurwa Narok.	-	-	-
Mwembe Tayari..	-	-	-
Nakuru Town	27.78	27.78	34.73
Nanyuki.....	33.07	33.34	32.92
Ndaragwa.....	-	-	-
Ngija.....	42.46	-	-
Ndondori.....	-	-	-
Nyabite.....	25.00	26.09	26.09
Nyahururu.....	27.78	27.78	32.43
Nyeri.....	24.05	23.22	23.15
Oi Kalou.....	35.00	37.50	45.00
Oyugis.....	-	-	-
Riochanda.....	20.83	21.74	-
Runyenjes.....	22.73	23.87	20.45
Sagana.....	29.55	35.12	-
Sega.....	-	-	-
Siakago.....	23.27	23.02	24.00
Siaya.....	35.12	-	-
Sibanga.....	-	-	-
Soko Mjinga.....	26.09	27.27	-
Sotik.....	24.00	25.00	28.00
Tala.....	30.00	35.00	35.00
Thika.....	44.29	31.25	35.83
Toi.....	25.00	25.00	-
Turbo.....	20.00	21.00	23.75
Turkana.....	50.00	50.00	-
Ukunda.....	48.75	46.60	47.50
Unguja.....	34.29	-	-
Voi.....	25.00	25.00	-
Wajir Town.....	-	-	-
Wote.....	28.00	28.00	27.43
Total	31.35	29.96	30.35

-Data not Available

Table 9(C): Average Monthly Retail Prices for Dry Beans, 2018 (per Kg)

Month/Town	Jan	Feb	Mar	Apr	May	Jun	Jul	Aug	Sep	Oct	Nov	Dec
Akala.....	80.98	-	-	-	-	-	-	71.34	74.91	72.21	81.19	81.45
Bomet.....	71.16	66.66	78.85	70.94	70.77	77.78	73.08	71.15	69.93	64.62	69.23	-
Bondo.....	100.28	100.22	93.41	95.03	99.28	70.74	90.91	-	-	-	-	-
Bumala.....	-	-	-	-	69.05	73.02	-	-	-	-	-	-
Bungoma Town.....	-	-	-	-	-	-	73.00	88.21	-	-	-	-
Bura Tana.....	100.00	100.00	100.00	100.00	100.00	100.00	100.00	100.00	100.00	100.00	-	-
Burma.....	104.76	104.76	105.00	105.00	100.00	100.00	100.00	-	-	-	-	-
Burn Forest.....	90.00	90.00	105.00	113.46	114.40	90.00	88.33	85.00	83.75	80.00	-	-
Busia Town.....	-	-	-	-	80.95	76.98	-	-	-	-	-	-
Butere.....	100.00	88.64	102.28	113.64	68.18	73.63	75.00	-	-	-	-	-
Chepsonoi.....	-	-	-	-	81.55	79.08	78.11	79.19	82.61	-	82.66	89.59
Cheptula.....	73.97	79.22	81.82	84.09	77.27	77.27	72.73	69.32	72.73	70.91	68.18	68.18
Daraja Mbili.....	-	57.57	80.94	-	-	-	-	63.70	62.94	-	60.03	63.02
Eldoret.....	-	95.46	102.50	119.00	112.73	100.00	93.33	90.00	85.00	85.00	88.75	90.00
Embu Town.....	67.50	65.63	70.84	65.28	60.51	65.28	58.64	58.35	56.25	61.24	59.09	59.09
Endebess.....	75.00	80.56	62.50	62.50	-	-	-	-	-	-	-	-
Engare.....	-	-	-	70.00	51.20	56.00	53.33	59.00	56.00	65.60	70.00	72.00
Gakoromere.....	88.89	79.17	76.39	75.31	77.78	55.56	55.56	55.56	55.56	55.56	63.89	66.67
Garissa Town.....	-	-	-	-	-	113.33	98.10	86.67	86.67	87.67	81.67	81.67
Garsen.....	80.00	80.00	80.00	80.00	80.00	80.00	80.00	80.00	80.00	80.00	80.00	80.00
Gatundu.....	-	-	-	96.11	100.00	99.17	97.22	93.33	100.00	51.67	-	-
Gikomba.....	95.24	100.00	110.00	110.00	104.76	104.76	104.76	-	-	-	-	-
Githurai.....	-	-	-	81.61	84.05	82.77	82.94	87.92	87.50	51.67	-	-
Harambee.....	-	-	-	-	-	-	-	-	-	81.82	-	-
Hola.....	100.00	100.00	100.00	100.00	100.00	100.00	100.00	100.00	100.00	100.00	-	-
Homabay.....	-	-	-	-	-	-	60.15	60.10	-	65.38	-	-
Iciara.....	-	-	-	-	-	-	-	-	48.11	56.33	59.64	61.37
Isiolo Town.....	-	-	-	80.00	80.00	-	-	59.34	80.27	80.00	81.67	85.00
Iten.....	-	95.46	93.86	94.26	94.98	96.16	75.24	-	-	75.00	68.83	53.13
Kabarnet.....	77.78	88.89	-	-	100.00	88.89	87.50	-	-	-	-	-
Kajado.....	-	110.00	110.00	120.00	120.00	114.00	115.29	120.00	120.00	-	110.00	97.00
Kakamega.....	116.37	113.64	113.64	107.96	109.09	90.91	84.09	-	-	-	-	-
Kalundu.....	82.86	82.50	83.33	70.00	100.00	100.00	70.00	70.00	72.50	-	67.14	70.00
Kandara.....	-	-	-	-	-	-	-	-	-	60.00	-	-
Kangemi.....	105.00	104.76	104.76	110.00	105.00	105.00	105.00	-	-	-	-	-
Kapsabet.....	78.16	82.97	83.41	86.05	92.61	81.96	78.89	80.53	83.33	-	89.02	77.45
Karatna.....	105.24	106.07	104.71	122.73	100.25	103.29	102.02	-	-	87.47	84.34	80.62
Kawangware.....	100.00	95.24	95.24	104.55	104.55	104.55	104.55	-	-	-	-	-
Kegonga.....	77.00	93.92	88.00	84.62	97.33	96.00	100.60	-	-	80.77	-	94.00
Kehacha.....	74.67	81.50	78.00	93.00	90.00	98.18	97.00	-	-	77.64	78.00	80.00
Kerugoya.....	64.52	62.64	60.93	-	63.09	63.86	65.22	51.36	52.49	62.62	72.36	72.36
Kiambu.....	-	-	-	71.79	66.93	69.23	75.29	79.17	-	-	-	-
Kianjai.....	-	68.75	69.45	75.00	81.11	58.34	55.56	55.56	-	57.41	50.00	-
Kibingo.....	-	-	-	-	76.09	-	86.21	-	-	-	77.27	-
Kiboswa.....	70.83	-	-	-	-	-	-	-	-	-	-	-
Kilgoris.....	-	-	-	76.00	80.80	82.67	80.00	73.00	95.00	60.80	26.00	97.00
Kimulot.....	72.00	72.00	72.00	80.00	81.14	80.00	63.20	65.50	64.80	63.20	65.08	-
Kipkaren.....	-	90.00	100.00	113.33	116.11	90.00	86.67	81.67	-	80.00	80.00	80.00
Kiriaini.....	-	-	-	-	75.00	73.33	70.00	70.00	72.50	76.92	76.98	72.50
Kiritiri.....	-	-	-	-	-	-	-	-	57.32	73.93	68.44	70.25
Kitale.....	83.33	83.33	83.33	83.33	78.97	66.67	66.67	63.89	-	-	-	-
Kongowea.....	87.50	87.50	87.50	80.00	80.00	80.00	-	63.75	60.00	52.00	60.00	60.00
Korokochu.....	104.76	104.76	100.00	105.00	105.00	105.00	105.00	-	-	-	-	-
Kutus.....	68.15	66.31	68.48	-	65.22	65.22	65.22	66.70	67.48	70.84	69.81	71.96
Kwale.....	95.00	100.00	100.00	100.00	90.00	100.00	85.00	60.00	-	80.00	80.00	82.50
Limuru.....	-	-	-	86.51	72.76	68.90	76.17	80.00	-	-	-	-
Lodwar.....	73.01	84.95	79.17	100.00	67.13	72.92	-	-	-	-	-	-
Machakos Town.....	-	80.00	80.00	80.00	80.00	78.33	80.00	80.00	80.00	80.00	77.50	70.00
Mackinon.....	116.00	120.00	120.00	120.00	120.00	-	-	100.00	95.00	100.00	100.00	100.00
Majengo.....	102.50	97.50	77.50	80.00	86.00	90.00	-	80.00	80.00	80.00	75.00	70.00
Makuyu.....	-	-	-	75.00	70.00	75.00	73.75	69.17	70.00	-	75.99	65.00
Marsabit Town.....	80.00	90.00	94.58	100.00	100.00	100.00	92.73	82.50	80.00	80.00	80.00	70.00
Mbale.....	90.91	86.36	90.91	-	81.82	84.09	90.91	-	-	77.27	81.82	81.82
Migori.....	80.00	83.00	80.50	96.00	96.80	94.50	102.00	-	-	82.68	76.00	74.27
Mulot.....	65.38	63.64	75.00	67.31	69.87	63.67	66.48	58.33	58.65	63.33	64.74	64.10
Mumias.....	116.36	109.10	78.41	84.09	90.91	90.91	78.41	-	-	-	-	-
Mundela.....	-	-	-	77.27	69.70	68.18	74.24	-	-	74.25	73.64	75.00
Muthithi.....	-	-	-	-	70.00	70.00	72.50	72.50	67.50	-	70.59	75.00
Muthurwa.....	81.33	84.56	80.97	104.76	110.00	110.00	110.00	-	-	-	-	-
Muthurwa Narok.....	-	-	-	-	92.80	96.00	97.33	98.00	-	104.80	112.00	100.00
Mwembe Tayari.....	102.50	85.00	77.50	80.00	94.00	80.00	-	80.00	77.50	84.00	90.00	78.33
Nakuru Town.....	68.89	71.25	70.00	63.75	82.94	76.11	63.58	52.13	55.19	-	51.85	57.04
Nanyuki.....	-	115.54	110.09	110.21	102.25	113.22	89.80	97.56	-	83.34	88.28	79.68
Ndaragwa.....	-	100.00	-	-	-	-	-	-	-	-	-	-
Ndondori.....	-	-	-	75.00	-	-	-	-	-	-	-	-
Nguya.....	101.36	93.75	100.10	96.33	72.92	79.38	105.49	68.81	73.75	73.75	80.37	83.51
Nyabite.....	-	-	-	-	89.39	-	69.26	57.89	-	-	77.27	-
Nyahururu.....	-	110.91	111.12	110.96	111.29	110.85	111.32	80.56	-	-	-	77.61
Nyeri.....	99.41	95.98	93.22	89.92	99.61	90.48	89.33	-	-	81.05	78.32	83.43
Ol Kalou.....	-	100.00	100.00	100.00	100.00	84.44	96.30	100.00	-	100.00	90.00	95.00
Oyugis.....	-	-	-	-	-	56.63	-	-	-	-	-	-
Riochanda.....	-	-	-	-	77.54	-	63.53	67.19	-	-	81.82	-
Runyenjes.....	84.81	66.67	63.89	62.50	65.24	60.03	59.20	56.48	63.04	59.46	62.77	61.10
Sagana.....	78.97	91.38	85.15	-	77.71	65.53	-	77.22	62.95	71.10	70.66	69.81
Sega.....	98.00	90.00	82.50	80.00	88.00	-	-	82.50	80.00	76.00	60.00	62.50
Siakago.....	66.67	67.71	68.75	66.67	68.64	60.24	56.52	59.94	59.06	63.20	54.31	58.06
Siaya.....	112.59	102.65	96.29	-	90.52	86.49	91.91	75.17	74.59	73.49	80.02	83.51
Sibanga.....	83.33	81.25	83.33	83.33	-	-	-	-	-	-	-	-
Soko Mjinga.....	-	-	-	83.45	88.32	-	56.56	66.35	64.43	-	-	-
Sotik.....	68.00	68.00	68.18	72.80	76.00	74.29	64.00	65.00	65.00	63.20	64.00	64.00
Tala.....	-	70.00	-	70.00	70.00	71.67	75.00	70.00	70.00	72.50	70.00	70.00
Thika.....	72.00	77.00	-	78.98	79.55	79.22	80.12	86.67	-	-	-	-
Toi.....	115.00	109.52	110.00	110.00	110.00	110.00	110.00	-	-	-	-	-
Turbo.....	100.00	100.00	105.00	112.50	115.50	90.00	90.00	85.00	-	80.00	83.75	82.50
Turkana.....	75.00	83.33	83.33	100.00	-	102.53	80.73	-	-	83.33	90.91	112.50
Ukunda.....	100.00	90.00	90.00	100.00	90.00	95.00	90.83	62.50	-	69.00	72.50	78.75
Unguja.....	98.75	98.13	95.38	100.00	74.44	69.33	74.11	75.28	74.17	72.63	81.68	83.33
Voi.....	-	-	-	-	-	-	63.33	-	-	-	-	-
Wajir Town.....	-	-	-	-	-	-	-	120.00	-	-	-	-
Wote.....	-	-	-	110.00	-	97.50	90.00	80.00	100.00	-	86.67	95.00
Total.....	88.10	88.74	88.84	90.52	87.50	85.03	82.07	75.72	74.55	74.42	74.95	76.80

- Data Not Available

Table 9(d): Average Monthly Retail Prices for Dry Beans, 2019 (per Kg)

Month/Town	Jan	Feb	Mar
Akala.....	-	-	-
Bomet.....	72.11	71.79	71.79
Bondo.....	84.90	-	-
Bumala.....	-	-	-
Bungoma Town	-	-	-
Bura Tana.....	-	100.00	-
Burma.....	-	100.00	-
Burn Forest.....	90.00	90.00	90.00
Busia Town	-	-	-
Butere.....	-	-	-
Chepsonoi.....	82.59	82.58	86.46
Cheptula.....	72.40	71.59	73.23
Daraja Mbili.....	58.57	62.72	70.43
Eldoret	90.00	90.00	92.50
Embu Town.....	52.17	59.44	54.35
Endebess.....	-	-	-
Engare.....	-	-	-
Gakoromere.....	66.67	66.67	66.67
Garissa Town.....	81.67	81.67	81.67
Garsen.....	80.00	80.00	80.00
Gatundu.....	85.00	51.67	41.67
Gikomba.....	-	-	-
Githurai.....	85.71	75.00	51.67
Harambee.....	-	-	-
Hola.....	-	100.00	-
Homabay.....	-	-	-
Iciara.....	60.99	65.97	65.22
Isiolo Town.....	76.67	55.00	50.00
Iten.....	100.00	100.00	100.00
Kabarnet.....	-	88.89	100.00
Kajiado.....	79.81	76.98	70.00
Kakamega.....	-	-	-
Kalundu.....	77.50	75.00	75.00
Kandara.....	-	-	-
Kangemi.....	-	-	-
Kapsabet.....	79.24	86.66	86.48
Karatina.....	83.47	-	-
Kawangware.....	-	-	-
Kegonga.....	84.00	72.00	-
Kehacha.....	68.46	74.27	78.67
Kerugoya.....	54.98	55.20	51.36

Table 9(d) Continued: Average Monthly Retail Prices for Dry Beans, 2019 (per Kg)

Month/Town	Jan	Feb	Mar
Kiambu.....	81.67	76.44	70.00
Kianjai.....	62.97	53.97	51.39
Kibirigo.....	72.73	90.91	100.00
Kiboswa.....	-	-	-
Kilgoris.....	-	-	-
Kimulot.....	64.00	65.50	70.00
Kipkaren.....	82.50	90.00	90.00
Kiriaini.....	-	70.00	71.25
Kiritiri.....	63.86	65.28	64.88
Kitale.....	78.33	83.33	83.33
Kongowea.....	-	-	-
Korokocho.....	-	-	-
Kutus.....	67.99	64.57	65.88
Kwale.....	78.00	78.75	77.50
Limuru.....	76.12	-	80.00
Lodwar.....	-	-	-
Machakos Town.....	75.00	80.00	80.00
Mackinon.....	-	-	-
Majengo.....	-	-	-
Makuyu.....	70.00	65.00	65.00
Marsabit Town.....	-	-	-
Mbale.....	84.09	84.85	83.84
Migori.....	71.49	69.35	71.11
Mulot.....	64.10	64.10	62.82
Mumias.....	-	-	-
Mundeta.....	68.18	68.93	73.03
Muthithi.....	75.00	68.75	67.00
Muthurwa.....	-	-	-
Muthurwa Narok.....	-	-	-
Mwembe Tayari.....	-	-	-
Nakuru Town.....	62.22	62.22	62.22
Nanyuki.....	77.57	77.14	78.28
Ndaragwa.....	-	-	-
Ndondori.....	-	-	-
Ngiya.....	83.39	-	-
Nyabite.....	77.27	72.73	79.55
Nyahururu.....	77.35	77.78	77.41
Nyeri.....	78.74	77.40	86.52
Oi Kalou.....	101.67	95.00	100.00
Oyugis.....	-	-	-
Riochanda.....	67.05	83.33	-
Runyenjes.....	59.09	60.38	60.87
Sagana.....	65.37	80.43	-
Sega.....	-	-	-
Siakago.....	63.86	63.86	64.57
Siaya.....	86.40	-	-
Sibanga.....	-	-	-
Soko Mjinga.....	71.80	72.06	-
Sotik.....	64.00	65.50	70.00
Tala.....	70.00	70.00	70.00
Thika.....	77.44	64.17	73.33
Toi.....	86.67	81.11	-
Turbo.....	85.00	86.00	90.00
Turkana.....	83.33	83.33	-
Ukunda.....	90.00	84.00	80.00
Unguja.....	87.11	-	-
Voi.....	86.67	81.11	-
Wajir Town.....	-	-	-
Wote.....	75.00	71.00	77.14
Total	74.64	72.59	72.15

-Data not Available

Table 10: Exports of Coffee and Tea

Month	COFFEE *		TEA	
	Quantity (MT)	Value '(KSh. Million)	Quantity (MT)	Value '(KSh. Million)
2018				
January.....	2,509.26	1,285.98	48,446.76	14,964.45
February.....	2,834.28	1,612.42	47,356.65	14,656.94
March.....	3,936.10	2,236.94	34,487.70	10,470.94
April.....	4,550.24	2,822.20	33,564.66	9,829.58
May.....	5,572.91	3,209.36	42,532.98	11,703.03
June.....	4,649.03	2,664.46	45,182.21	12,463.24
July.....	4,683.09	2,457.05	45,242.32	12,226.12
August.....	2,972.69	1,546.91	38,022.53	9,919.47
September.....	2,519.53	1,141.39	40,267.54	10,478.62
October.....	3,521.39	1,467.33	43,893.85	11,327.26
November.....	4,619.48	1,729.50	44,107.54	11,014.55
December.....	2,311.60	921.35	38,680.96	9,781.31
2019				
January.....	3,469.39	1,498.72	48,622.81	11,831.30
February.....	4,567.37	1,903.18	41,026.62	9,638.24
March.....	4,351.34	2,256.18	42,457.17	9,910.41

Source: KRA Customs and Border Control Services department

* Coffee, not Roasted

MT denotes Metric tonnes

Table 11: Monthly Exports of Fresh Horticultural Produce

Month	Cut-flowers				Fruits				Vegetable			
	2018		2019*		2018		2019*		2018		2019*	
	Quantity (MT)	Value (KSh Million)	Quantity (MT)	Value (KSh Million)	Quantity (MT)	Value (KSh Million)	Quantity (MT)	Value (KSh Million)	Quantity (MT)	Value (KSh Million)	Quantity (MT)	Value (KSh Million)
January.....	15,941.08	12,354.09	15,585.32	9,939.87	2,897.01	458.01	3,241.48	507.45	8,293.18	2,086.58	9,794.17	2,503.41
February.....	17,501.03	12,682.70	17,865.75	10,914.69	5,973.81	827.86	8,564.62	1,236.09	6,128.07	2,946.02	7,016.72	1,869.56
March.....	14,686.27	8,438.88	16,463.44	8,861.73	10,758.95	2,079.12	12,183.15	1,757.85	7,548.81	2,098.62	5,357.63	1,826.03
April.....	12,833.44	9,116.46			11,995.51	1,627.26			4,825.37	2,130.99		
May.....	13,329.46	11,531.07			7,535.17	1,076.26			6,792.62	1,949.64		
June.....	9,617.48	6,986.57			6,948.90	1,241.66			4,946.37	1,410.29		
July.....	9,794.81	5,131.97			7,020.27	1,213.97			4,421.85	1,387.96		
August.....	11,560.38	10,669.69			8,403.10	1,608.97			7,090.14	2,842.46		
Sept.....	12,854.01	8,052.20			5,989.53	1,268.93			10,148.38	2,535.59		
October.....	15,319.05	9,029.33			2,235.80	393.45			10,841.18	2,617.76		
Nov.....	14,862.36	12,109.92			2,577.43	465.46			8,819.18	2,426.02		
Dec.....	12,927.72	8,089.85			3,306.50	570.14			5,963.54	3,253.25		
Total.....	161,227.10	114,192.74	49,914.51	29,716.29	75,641.97	12,831.09	23,989.25	3,501.39	85,818.72	27,685.19	22,168.52	6,199.00

Source: Horticultural Directorate

* Provisional

Table 12: External Trade

KSh Million						
Month	Domestic Exports	Re-Exports	Total Exports	Total Imports	Volume of Trade	Home use Imports
2018*						
January.....	46,227.50	7,219.43	53,446.93	157,516.94	210,963.87	150,660.74
February.....	49,398.06	7,873.55	57,271.61	128,943.27	186,214.89	125,930.74
March.....	46,310.17	4,682.59	50,992.76	152,038.51	203,031.27	142,361.49
April.....	43,138.42	6,909.26	50,047.68	150,002.08	200,049.76	138,412.71
May.....	47,728.87	7,585.00	55,313.87	168,020.10	223,333.98	161,799.90
June.....	48,724.34	4,194.90	52,919.25	142,525.50	195,444.74	137,593.90
July.....	46,391.15	6,493.71	52,884.86	152,648.13	205,532.99	150,329.69
August.....	43,297.56	7,689.34	50,986.90	149,306.97	200,293.87	139,351.18
September.....	42,637.13	4,140.25	46,777.38	129,796.06	176,573.44	125,826.66
October.....	44,137.25	5,821.96	49,959.22	149,245.11	199,204.32	137,316.22
November.....	44,073.60	4,241.97	48,315.57	153,491.79	201,807.35	149,201.71
December.....	39,405.36	4,607.23	44,012.59	126,686.88	170,699.47	121,827.30
2019*						
January.....	46,362.30	6,927.94	53,290.24	155,111.66	208,401.89	140,661.13
February.....	44,523.02	6,398.23	50,921.25	141,272.84	192,194.10	139,034.00
March.....	46,628.18	6,061.47	52,689.64	124,864.98	177,554.63	99,079.22

Source: Kenya Revenue Authority

* Revised

*Provisional

Table 13(a): Major Destinations of Domestic Exports

KSh Million											
Month/Country	Uganda	Tanzania	United Kingdom	Pakistan	Netherlands	Egypt	Germany	Rwanda	USA	United Arab Emirates	France
2018											
January.....	3,522.39	1,639.15	3,474.86	7,311.82	4,190.03	2,186.67	771.23	1,052.37	2,538.08	1,746.42	520.11
February.....	4,489.98	2,382.83	4,273.06	6,989.37	4,528.73	2,012.05	1,019.77	1,098.47	3,039.26	2,435.82	523.44
March.....	4,908.78	1,984.68	3,259.82	4,264.52	5,012.53	1,176.03	1,041.64	1,284.54	3,615.25	2,213.77	657.88
April.....	3,441.66	2,320.08	3,295.19	4,073.73	4,071.13	1,017.21	1,149.95	1,134.05	3,599.91	1,516.63	720.33
May.....	4,942.74	2,215.05	3,266.73	4,508.35	3,848.43	1,736.37	1,238.25	1,397.65	4,335.60	2,013.96	799.88
June.....	4,357.49	1,798.21	3,536.14	5,246.93	3,313.05	1,939.73	1,038.67	1,189.67	4,498.54	1,904.99	558.49
July.....	3,703.89	1,933.73	3,744.68	5,346.96	3,616.37	1,376.88	968.51	1,402.51	5,325.58	1,871.81	685.66
August.....	4,449.66	2,149.53	2,551.79	3,809.35	3,105.61	1,528.96	602.80	1,485.63	4,758.17	1,803.94	778.36
September.....	4,099.65	1,917.12	2,920.98	4,639.27	3,731.40	1,578.65	721.62	1,199.22	4,064.64	1,843.59	867.24
October.....	4,293.07	2,177.53	3,243.80	4,276.78	3,547.80	2,081.39	895.64	1,225.99	3,753.66	2,134.14	664.72
November.....	4,619.16	2,242.75	3,153.07	4,560.08	2,998.40	1,114.09	954.12	1,581.89	4,606.55	2,298.61	637.73
December.....	4,172.04	2,099.46	3,231.85	4,014.59	3,345.50	1,642.86	572.15	1,072.20	2,970.39	1,333.05	491.85
2019*											
January.....	4,345.11	2,113.06	4,418.99	4,411.96	4,650.98	2,068.80	895.63	1,043.44	3,732.43	1,928.94	625.27
February.....	4,353.75	2,056.67	3,720.80	4,289.18	4,902.82	1,454.58	1,233.55	1,269.53	3,305.64	1,466.29	602.51
March.....	4,535.53	2,173.74	3,700.36	4,293.95	4,824.51	1,726.32	1,033.20	1,570.68	3,905.57	1,577.08	657.19

Source: Kenya Revenue Authority

Table 13(b): Domestic Exports by Broad Economic Category

Value in KSh Million															
Descriptions	2018												2019*		
	Jan	Feb	March	April	May	June	July	Aug	Sep	Oct	Nov	Dec	Jan	Feb	March
Food and beverages.....	23,051.52	23,232.62	21,014.80	20,757.93	24,126.58	24,229.24	24,092.74	20,203.48	20,137.41	20,824.33	19,673.36	17,112.10	21,025.36	18,983.27	20,692.22
Industrial supplies (Non-Food).....	11,579.15	10,714.74	11,125.05	10,480.43	9,879.49	12,088.29	9,146.03	11,410.24	9,902.97	9,991.85	10,934.19	10,194.75	11,444.61	10,795.21	10,917.59
Fuel and Lubricants.....	181.87	529.46	494.45	167.13	598.25	511.14	487.31	255.65	411.92	488.38	378.57	178.50	318.38	272.69	300.33
Machinery & other capital Equipment.....	534.54	892.58	487.63	556.91	604.95	483.99	560.93	504.43	462.97	572.65	695.02	435.49	514.53	596.35	1,228.54
Transport equipment.....	198.71	852.59	673.71	515.49	566.45	730.44	288.64	395.50	271.23	384.32	671.53	528.13	486.54	586.90	505.57
Consumer goods Not elsewhere specified..	10,665.45	13,176.08	12,514.22	10,660.47	11,950.90	10,681.24	11,815.45	10,528.25	11,450.50	11,875.73	11,720.83	10,956.09	12,572.88	13,288.15	12,983.51
Goods not elsewhere specified.....	16.26	-	0.31	0.06	2.25	-	0.06	-	0.14	-	0.10	0.31	-	0.46	0.42
Total	46,227.50	49,398.06	46,310.17	43,138.42	47,728.87	48,724.34	46,391.15	43,297.56	42,637.13	44,137.25	44,073.60	39,405.36	46,362.30	44,523.02	46,628.18
Percentage Shares:.....															
Food and Beverages.....	49.87	47.03	45.38	48.12	50.55	49.73	51.93	46.66	47.23	47.18	44.64	43.43	45.35	42.64	44.38
Industrial Supplies (Non-Food).....	25.05	21.69	24.02	24.29	20.70	24.81	19.72	26.35	23.23	22.64	24.81	25.87	24.69	24.25	23.41
Fuel and Lubricants.....	0.39	1.07	1.07	0.39	1.25	1.05	1.05	0.59	0.97	1.11	0.86	0.45	0.69	0.61	0.64
Machinery and other Capital Equipment....	1.16	1.81	1.05	1.29	1.27	0.99	1.21	1.17	1.09	1.30	1.58	1.11	1.11	1.34	2.63
Transport Equipment.....	0.43	1.73	1.45	1.19	1.19	1.50	0.62	0.91	0.64	0.87	1.52	1.34	1.05	1.32	1.08
Consumer Goods not elsewhere specified..	23.07	26.67	27.02	24.71	25.04	21.92	25.47	24.32	26.86	26.91	26.59	27.80	27.12	29.85	27.84
Goods not elsewhere specified.....	0.04	-	0.00	0.00	0.00	-	0.00	-	0.00	-	0.00	0.00	-	0.00	0.00
TOTAL.....	100	100	100	100	100	100	100	100	100	100	100	100	100	100	100

Source: Kenya Revenue Authority (KRA)

*Provisional

Table 14 (a) Major Origins of Imports

											Value (KSh Million)
Month	United Arab Emirates	United Kingdom	South Africa	Saudi Arabia	Japan	India	USA	Germany	Netherlands	France	China
2018											
January.....	5,396.68	3,159.61	5,955.10	12,913.24	8,454.68	21,468.99	8,421.64	2,987.22	3,277.64	1,926.07	27,460.82
February.....	9,905.83	2,290.87	4,901.65	9,645.02	6,067.21	15,332.90	5,845.90	2,985.08	1,331.88	2,084.16	25,258.07
March.....	18,589.13	2,256.46	6,446.64	14,031.70	7,849.47	11,455.19	6,665.67	3,771.61	1,474.25	1,373.02	35,566.06
April.....	22,353.41	2,288.50	5,556.46	10,404.19	7,505.30	16,568.68	4,635.84	3,995.14	1,298.71	1,916.45	29,623.45
May.....	16,077.89	2,639.18	5,485.20	13,493.78	5,609.39	18,141.58	3,113.78	6,626.71	1,500.46	1,573.98	48,641.65
June.....	8,830.67	2,768.91	6,145.49	18,885.40	7,344.82	9,083.70	2,684.04	3,184.28	1,780.01	1,697.78	36,172.60
July.....	8,139.67	2,760.69	5,953.65	21,451.55	9,137.63	14,313.12	3,913.45	4,132.34	1,311.70	2,367.15	35,314.50
August.....	11,003.85	3,093.38	4,732.03	20,262.87	8,323.90	14,726.19	3,399.50	3,345.10	1,947.04	1,804.59	29,039.38
September.....	9,724.29	2,261.72	3,253.66	4,557.89	8,914.82	24,813.09	3,543.27	3,673.28	1,520.35	2,034.83	25,117.04
October.....	15,988.21	2,459.48	5,557.09	17,310.25	8,760.00	15,204.47	4,054.71	4,873.15	1,130.61	2,268.36	26,837.16
November.....	15,162.36	2,787.09	5,792.41	12,713.03	13,797.14	13,643.55	3,655.81	3,032.26	1,602.66	2,801.76	27,835.45
December.....	6,244.67	2,789.51	4,954.14	17,034.05	8,058.31	10,500.64	3,311.54	3,993.06	1,188.80	2,081.33	23,960.20
2019*											
January.....	15,109.48	2,631.56	6,775.82	13,077.49	7,831.07	13,048.66	4,646.86	3,211.09	2,240.73	2,044.78	30,006.98
February.....	9,843.51	2,602.96	4,984.79	6,617.74	6,503.80	13,218.97	5,114.29	4,527.45	14,851.90	1,516.78	29,120.56
March.....	6,566.24	3,110.39	5,624.02	17,192.40	5,560.32	10,938.14	4,071.18	2,783.86	1,353.53	3,043.31	18,175.05

Source: Kenya Revenue Authority

*Provisional

Table 14(b): Imports by Broad Economic Category

Descriptions	Value in KSh Million														
	2018												2019*		
	Jan	Feb	March	April	May	June	July	Aug	Sep	Oct	Nov	Dec	Jan	Feb	March
Food and beverages.....	20,561.99	16,597.23	16,440.02	13,259.10	12,470.10	15,508.64	13,567.79	14,368.20	11,185.81	12,536.67	16,617.81	11,763.28	16,707.97	12,192.69	14,997.32
Industrial supplies (Non-Food).....	55,629.01	46,760.85	53,550.33	53,030.67	56,093.84	51,198.00	51,885.68	52,703.92	45,475.94	54,144.66	47,714.60	41,837.71	58,373.17	43,619.35	47,371.53
Fuel and Lubricants.....	24,976.86	21,019.22	30,660.02	30,577.85	33,731.69	27,038.10	30,271.98	32,880.38	23,068.28	28,657.31	29,822.49	23,130.65	26,421.76	24,222.45	21,740.91
Machinery & other capital Equipment.....	26,638.25	19,316.87	18,787.28	22,921.22	30,262.44	22,629.12	25,596.36	21,245.35	23,704.19	25,784.68	30,125.55	23,544.06	25,260.90	33,547.46	18,316.86
Transport equipment.....	14,478.40	13,755.69	18,680.17	18,118.14	22,314.22	14,150.52	18,952.26	15,263.91	12,797.24	13,969.56	13,442.94	13,177.65	14,982.67	15,487.91	11,675.71
Consumer goods Not elsewhere specified..	13,991.99	10,661.96	13,230.47	11,217.03	12,226.98	10,756.57	12,143.80	12,725.38	11,991.45	13,020.67	14,515.77	12,108.27	12,292.74	11,948.70	10,589.45
Goods not elsewhere specified.....	1,240.43	831.45	690.22	878.08	920.84	1,244.55	230.26	119.83	1,573.16	1,131.57	1,252.63	1,125.26	1,072.44	254.29	173.21
Total.....	157,516.94	128,943.27	152,038.51	150,002.08	168,020.10	142,525.50	152,648.13	149,306.97	129,796.06	149,245.11	153,491.79	126,686.88	155,111.66	141,272.84	124,864.98
Percentage Shares:.....															
Food and Beverages.....	13.05	12.87	10.81	8.84	7.42	10.88	8.89	9.62	8.62	8.40	10.83	9.29	10.77	8.63	12.01
Industrial Supplies (Non-Food).....	35.32	36.26	35.22	35.35	33.39	35.92	33.99	35.30	35.04	36.28	31.09	33.02	37.63	30.88	37.94
Fuel and Lubricants.....	15.86	16.30	20.17	20.38	20.08	18.97	19.83	22.02	17.77	19.20	19.43	18.26	17.03	17.15	17.41
Machinery and other Capital Equipment....	16.91	14.98	12.36	15.28	18.01	15.88	16.77	14.23	18.26	17.28	19.63	18.58	16.29	23.75	14.67
Transport Equipment.....	9.19	10.67	12.29	12.08	13.28	9.93	12.42	10.22	9.86	9.36	8.76	10.40	9.66	10.96	9.35
Consumer Goods not elsewhere specified..	8.88	8.27	8.70	7.48	7.28	7.55	7.96	8.52	9.24	8.72	9.46	9.56	7.93	8.46	8.48
Goods not elsewhere specified.....	0.79	0.64	0.45	0.59	0.55	0.87	0.15	0.08	1.21	0.76	0.82	0.89	0.69	0.18	0.14
TOTAL.....	100	100	100	100	100	100	100	100	100	100	100	100	100	100	100

Source: Kenya Revenue Authority

*Provisional

Table 14 (c): Mobile Money Transactions

As at the end of month	Mobile money Agents	Mobile money subscriptions (millions)	Number of Transactions (millions)*	Value (KSh billions)
2018				
January.....	188,029.00	37.84	136.66	322.98
February.....	192,117.00	38.42	132.30	300.85
March.....	196,002.00	39.34	147.52	337.11
April.....	201,795.00	40.29	142.06	313.00
May.....	202,387.00	41.73	140.95	328.97
June.....	197,286.00	42.58	137.41	317.67
July.....	200,227.00	42.61	143.09	332.35
August.....	202,627.00	43.56	149.52	348.91
September.....	203,359.00	44.27	145.99	327.66
October.....	211,961.00	45.44	155.16	343.23
November.....	206,312.00	46.23	153.15	343.87
December.....	205,745.00	47.69	155.77	367.77
2019				
January.....	201,336.00	40.30	154.24	368.02

Source: Central Bank of Kenya

Table 14(d): International trade in ICT

KSh Million

	2018												2019
	Jan	Feb	March	April	May	June	July	Aug	Sep	Oct	Nov	Dec	Jan
Imports													
Office machines ¹	163.71	81.60	48.55	111.40	204.66	138.47	104.43	147.57	232.83	59.04	101.24	722.12	91.44
Automatic data processing machines, storage units etc.....	897.00	1,271.08	663.33	968.60	1,093.24	865.65	1,259.76	1,321.71	601.80	831.79	1,274.83	681.60	1,388.08
Part and accessories ²	81.76	38.87	60.86	40.99	43.78	78.06	56.09	49.62	68.88	49.28	58.18	41.68	65.45
Monitors and projectors and reception apparatus for television ³	523.58	810.26	391.18	653.94	843.03	563.63	876.14	775.11	591.03	582.63	993.44	469.56	784.62
Reception apparatus for radio broadcasting ⁴	10.03	11.86	14.83	4.66	7.85	14.64	12.45	26.62	17.42	24.23	458.31	25.62	18.96
Recording equipments ⁵	23.14	18.05	8.27	30.64	6.56	10.09	45.61	30.89	14.31	16.97	331.65	22.06	21.67
Telecommunications equipment ⁶	1,742.38	1,822.21	1,574.82	1,659.62	1,981.77	2,148.07	2,762.25	2,341.38	2,206.31	1,453.03	3,507.65	2,314.89	4,480.02
Exports													
Office machines ¹	0.01	11.90	8.01	0.18	112.45	2.85	0.93	3.89	7.08	0.27	3.24	3.97	8.09
Automatic data processing machines, storage units etc.....	10.46	70.10	27.74	59.78	22.76	12.14	28.10	8.47	25.37	27.59	22.32	32.22	17.90
Part and accessories ²	1.08	0.35	15.79	0.52	1.16	11.52	2.85	1.49	11.70	-	1.45	1.53	1.50
Monitors and projectors and reception apparatus for television ³	9.06	13.19	35.47	15.00	6.31	20.49	52.71	1.25	21.77	26.23	0.46	9.79	2.71
Reception apparatus for radio broadcasting ⁴	-	1.22	2.36	1.33	5.84	9.20	0.09	0.00	0.20	0.05	0.03	1.63	0.01
Recording equipments ⁵	0.06	0.31	0.55	9.07	0.22	0.15	0.07	0.09	0.41	0.16	0.02	0.22	0.02
Telecommunications equipment ⁶	13.21	40.75	63.47	21.01	90.39	43.91	82.25	117.56	33.40	9.76	39.20	23.94	49.42

¹ Electronic calculating machines, cash registers, accounting machines, postage-franking machines, ticket issuing machines, reproducing and displaying machines with calculating functions, duplicating machines and their parts/accessories etc

² For office machines and data processing machines

³ Include Television sets, decoders etc

⁴ Whether or not combined with sound recording or reproducing apparatus or a clock

⁵ Sound recording, video recording or reproducing apparatus including or not including a video tuner

⁶ Such as computer, laptops, networking equipments etc plus their parts and accessories such as telephone sets, microphones, electric sound amplifier sets Television cameras, digital or video cameras recorders, radio or tv transmission apparatus etc

Table 15(a): Local Electricity Generation by Source

							KWh Million
Month	Hydro	Geo - Thermal	Thermal*	Wind	Solar	Co-Generation	Total
2018							
January.....	222.95	430.49	242.34	3.26	-	1.45	900.49
February.....	193.43	387.02	249.13	6.86	-	0.62	837.06
March.....	248.39	448.12	202.18	4.11	-	0.07	902.87
April.....	316.85	427.73	138.66	3.24	-	0.07	886.55
May.....	385.88	447.05	82.92	1.70	0.02	0.08	917.65
June.....	400.86	430.00	82.37	1.23	0.01	0.01	914.48
July.....	420.32	438.12	86.86	1.69	-	0.02	947.01
August.....	417.37	426.57	117.23	2.52	0.01	0.02	963.72
September.....	392.07	439.80	85.33	7.46	0.01	0.02	924.69
October.....	365.42	432.03	87.21	76.86	0.01	0.02	961.55
November.....	340.07	397.58	80.15	133.40	5.77	0.02	956.99
December.....	282.78	423.32	91.53	133.26	7.79	0.04	938.72
2019*							
January.....	278.92	417.35	114.07	147.55	7.99	0.02	965.90
February.....	253.91	374.43	98.56	146.21	7.02	0.01	880.14
March.....	282.83	445.10	99.00	144.00	8.07	0.02	979.02

*Provisional

Fig. 7: Electricity Generation by Source

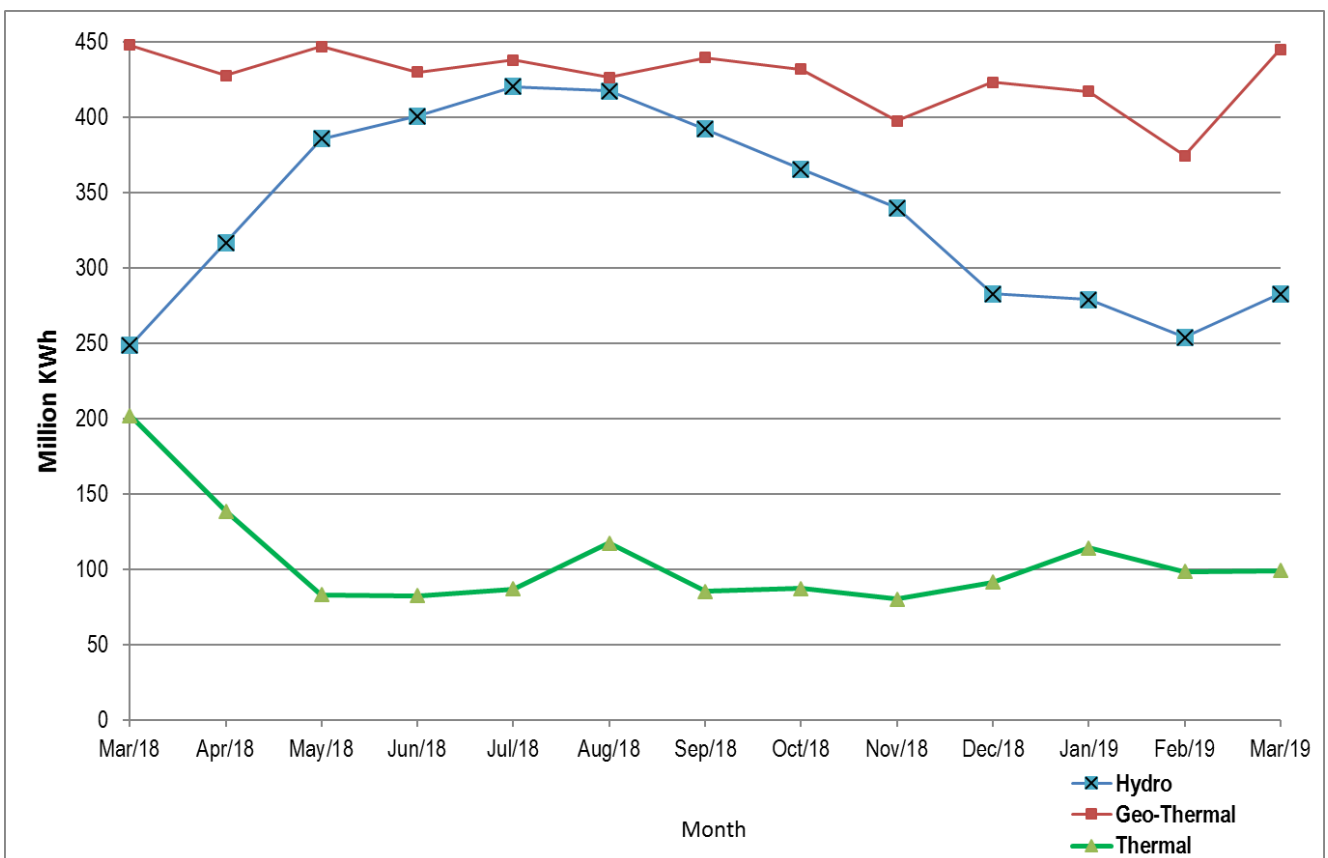


Table 15(b): Generation and Consumption of Electricity

Million KWh										
Month	Generation						Consumption			
	Local Generation	Imports				Total Generation	Total KPLC Sales	Exports		
		Uganda	Tanzania	Ethiopia	Total			Uganda	Tanzania	Total Exports
2018										
January.....	900.49	19.04	-	0.35	19.39	919.88	731.06	0.96	0.22	1.18
February.....	837.06	18.62	-	0.32	18.94	856.00	684.62	0.93	0.09	1.02
March.....	902.87	11.03	-	0.26	11.29	914.16	745.60	3.20	0.04	3.24
April.....	886.55	8.20	-	0.14	8.34	894.89	688.30	3.55	0.06	3.61
May.....	917.65	8.39	-	-	8.39	926.04	712.00	3.24	0.01	3.25
June.....	914.48	8.38	-	-	8.38	922.86	726.76	3.20	-	3.20
July.....	947.01	8.19	-	-	8.19	955.20	709.30	3.35	-	3.35
August.....	963.72	12.06	-	-	12.06	975.78	730.67	2.67	-	2.67
September.....	924.69	7.60	-	-	7.60	932.29	740.93	3.31	-	3.31
October.....	961.55	8.90	-	-	8.90	970.45	737.71	3.26	-	3.26
November.....	956.99	8.86	-	-	8.86	965.85	750.97	3.36	-	3.36
December.....	938.72	9.89	-	-	9.89	948.61	714.86	3.76	-	3.76
2019*										
January.....	965.90	15.18	-	-	15.18	981.08	778.12	1.85	0.01	1.86
February.....	880.14	13.92	-	0.36	14.28	894.42	691.32	1.91	-	1.91
March.....	979.02	16.75		0.39	17.14	996.16	752.26	1.70	-	1.70

*Provisional

Table 15(c): Consumption of Petroleum Fuels

	'000 MT							
Month	AGO (Light Diesel Oil)	Jet	Fuel Oil	Motor Spirit	Illuminating Kerosene	IDO (Heavy Diesel Oil)	LPG	Aviation Gasoline
2018								
January.....	188.50	58.94	55.21	111.36	36.78	0.00	18.48	0.12
February.....	174.78	54.30	45.29	105.75	38.55	0.00	16.24	0.11
March.....	167.95	56.94	56.66	121.07	35.00	0.02	20.40	17.62
April.....	181.18	53.94	29.19	111.36	36.11	0.00	21.65	0.12
May.....	195.01	53.71	26.62	123.34	39.75	0.00	22.21	0.11
June.....	183.63	51.39	25.00	114.63	32.58	0.00	22.38	0.10
July.....	191.28	56.26	25.02	113.14	30.01	0.00	22.58	0.10
August.....	212.37	63.75	28.50	126.09	24.98	0.17	21.48	0.12
September.....	162.57	60.89	23.71	92.88	16.80	0.00	19.52	0.09
October.....	186.38	52.79	37.11	112.84	16.53	0.00	12.65	0.11
November.....	175.30	51.87	25.70	113.73	18.85	0.02	13.96	0.11
December.....	154.21	59.61	24.00	112.81	13.44	0.00	10.77	0.12
2019*								
January.....	183.69	61.25	30.61	119.69	19.54	0.00		1.33
February.....	183.39	56.64	26.00	115.41	16.00	0.00		0.74
March.....				113.79	14.83	0.83		1.40

Source: Ministry of Energy and Petroleum

MT: Denotes Metric Tonnes

*Provisional

LPG data not yet available

Table 15(d): Average Retail Prices for Selected Fuel Products within Nairobi

KSh per litre			
Period	Motor Gasoline Premium	Light Diesel Oil (Gasoil)	Illuminating Kerosene
2018			
January.....	106.30	94.82	74.78
February.....	107.92	96.96	76.75
March.....	107.46	97.86	77.45
April.....	106.83	97.86	76.72
May.....	107.17	98.64	78.22
June.....	108.81	103.60	84.10
July.....	112.20	103.25	85.73
August.....	113.73	102.74	84.95
September.....	116.79	108.12	108.41
October.....	115.73	109.72	108.84
November.....	116.79	108.12	108.41
December.....	113.54	112.28	105.22
2019			
January.....	104.21	102.24	101.70
February.....	100.09	95.96	96.50
March.....	101.35	96.61	99.46

Table 15(e): Average Retail Prices for Selected Fuels in Kenya

Period	Motor Gasoline Premium (KSh per Litre)	Light Diesel Oil (KSh per Litre)	Illuminating Kerosene (KSh per Litre)	L.P.G (KSh per 13 Kg)	Charcoal (KSh per 4 Kg Tin)
2018					
January.....	107.17	95.79	75.74	2,140.37	83.47
February.....	108.79	97.92	77.71	2,150.20	84.49
March.....	108.33	98.82	78.41	2,169.19	107.36
April.....	107.70	98.82	77.68	2,172.24	125.48
May.....	108.04	99.60	79.18	2,164.43	135.64
June.....	109.67	104.55	85.05	2,170.92	138.13
July.....	113.07	104.21	86.69	2,176.31	137.39
August.....	114.58	103.69	85.90	2,177.32	137.71
September.....	117.54	108.97	109.25	2,187.21	141.24
October.....	116.48	110.57	109.68	2,185.79	140.93
November.....	117.54	108.97	109.25	2,141.46	141.12
December.....	114.30	111.89	106.15	2,193.42	141.62
2019					
January.....	104.99	103.10	102.56	2,193.13	141.22
February.....	101.13	96.83	97.63	2,189.99	141.04
March.....	102.13	97.47	100.31	2,191.84	140.42

Fig. 8: Average Prices for Liquefied Petroleum Gas in Kenya ('000 KSh per 13 Kg cylinder)

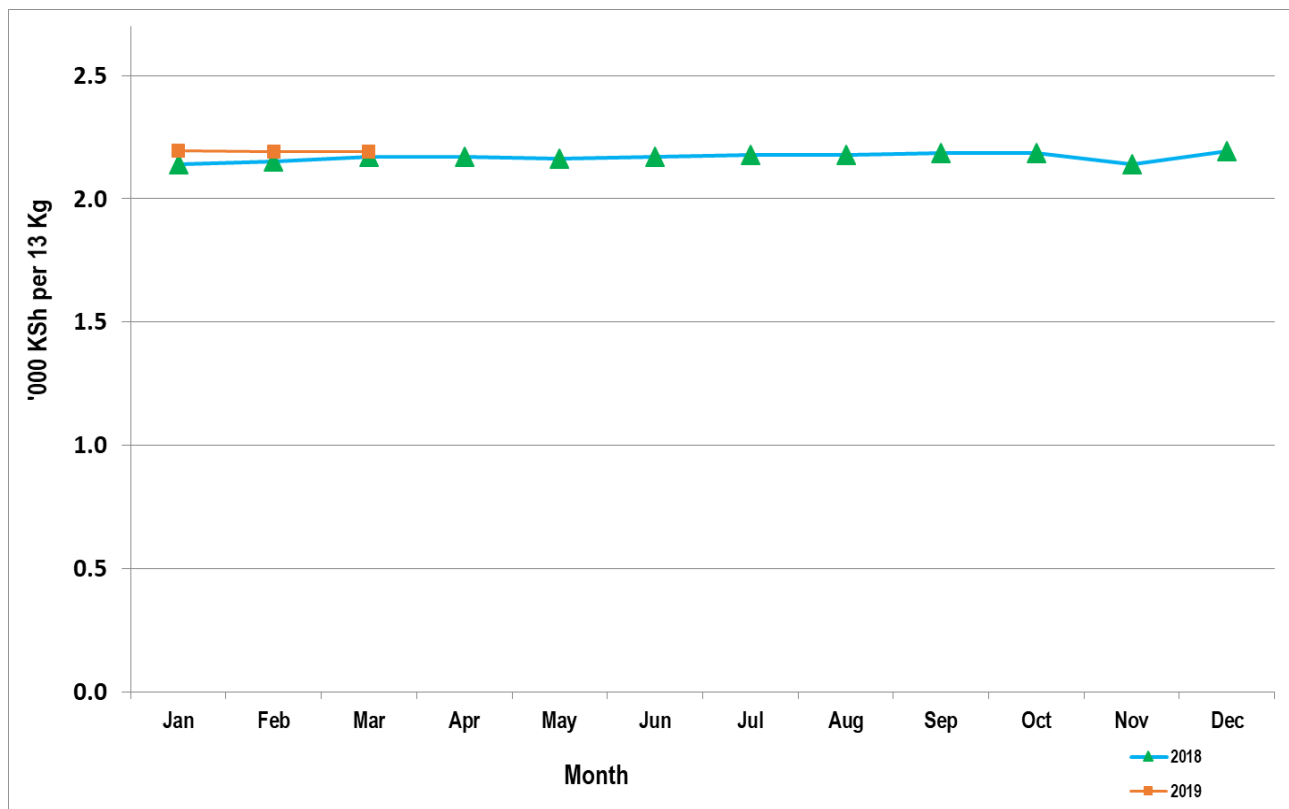


Table 15(f): Murban ADNOC Crude Oil Prices

	US\$/ BBL					
Month/Year	2014	2015	2016	2017	2018	2019
January.....	109.75	46.40	29.95	55.35	66.28	60.81
February.....	109.95	56.55	33.00	56.10	65.98	65.64
March.....	108.30	56.10	38.20	52.60	66.31	68.60
April.....	107.95	60.55	42.00	53.40	70.97	
May.....	109.15	65.75	47.35	51.45	76.71	
June.....	111.65	63.70	49.05	47.30	73.22	
July.....	109.50	57.70	44.60	48.60	76.00	
August.....	104.25	48.85	48.85	48.85	74.91	
September.....	97.95	46.60	45.50	55.70	78.75	
October.....	87.35	47.30	51.35	63.83	81.28	
November.....	77.00	43.55	46.15	63.65	68.05	
December.....	60.65	37.25	54.15	62.06	59.33	

US\$/ BBL: US Dollar per Barrel

Price: Abu Dhabi Free On Board (FOB)

ADNOC: Abu Dhabi National Oil Corporation

Table 16: Value of Building Plans Approved

KSh Million

Month	Actual Value of Buildings			Real *		
	Residential	Non-Residential	Aggregate	Residential	Non-Residential	Aggregate
2018						
January.....	13,122.47	6,824.92	19,947.39	154.20	78.25	231.85
February.....	10,917.29	9,822.84	20,740.13	128.29	112.62	241.07
March.....	12,810.54	6,607.25	19,417.78	150.53	75.75	225.70
April.....	-	-	-	-	-	-
May.....	12,917.29	7,122.58	20,039.87	151.79	81.66	232.93
June.....	13,409.58	7,207.25	20,616.83	157.57	82.63	239.64
July.....	10,624.92	7,201.69	17,826.61	124.85	82.57	207.20
August.....	10,735.63	4,880.78	15,616.41	126.15	55.96	181.51
September.....	11,132.49	6,147.54	17,280.03	130.82	70.48	200.85
October.....	9,696.37	8,082.13	17,778.50	113.94	92.66	206.65
November.....	15,319.80	9,354.40	24,674.20	180.02	107.25	286.80
December.....	11,152.41	5,206.55	16,358.96	131.05	59.69	190.15
2019						
January.....	10,435.29	7,064.94	17,500.23	114.03	75.22	188.92
February.....	10,357.13	7,435.42	9,792.55	113.18	79.16	105.71
March.....	12,256.40	8,991.05	21,247.45	133.94	95.73	229.37

Source: Nairobi City County

* Actual deflated by relevant construction cost indices (Dec1972 =100)

- No Building plans were approved

Table 17(a): Domestic Production of Sugar

	Metric Tonnes						
Month/Year	2013	2014	2015	2016	2017	2018	2019*
January.....	49,046	64,298	63,227	64,499	53,071	62,819	53,060
February.....	50,036	60,044	57,917	59,863	49,094	53,833	46,139
March.....	43,647	63,365	63,389	65,708	42,238	49,148	
April.....	39,151	47,279	46,280	48,802	26,230	36,682	
May.....	36,529	44,094	44,081	45,156	15,246	28,933	
June.....	49,512	42,866	46,098	53,797	16,113	28,320	
July.....	61,802	55,912	47,957	56,948	17,882	30,105	
August.....	58,687	50,140	54,089	52,232	10,892	35,646	
September.....	50,303	47,915	61,069	44,686	21,649	37,652	
October.....	52,751	42,197	56,360	48,929	32,296	45,324	
November.....	54,752	34,455	43,401	51,298	43,175	38,768	
December.....	53,994	64,298	48,089	46,422	49,240	38,268	
Total.....	600,210	592,668	631,957	638,340	377,126	485,498	99,199

Source: Sugar Directorate

*Provisional

Table 17(b): Production of Soft Drinks

	'000 Litres					
Month	2013	2014	2015	2016	2017	2018
January.....	32,809	39,007	50,502	41,348	50,409	52,369
February.....	36,068	39,146	45,237	41,440	43,353	49,447
March.....	42,552	43,209	58,038	48,865	50,623	52,580
April.....	27,345	37,885	44,429	42,148	46,399	45,716
May.....	27,581	39,970	43,189	36,874	40,742	40,478
June.....	30,919	28,198	39,191	36,202	45,875	45,831
July.....	28,464	32,301	42,393	32,158	41,980	43,045
August.....	27,697	33,098	39,331	38,508	41,217	47,970
September.....	36,026	35,589	48,884	41,400	40,221	47,026
October.....	34,810	41,004	46,131	45,294	45,275	47,666
November.....	36,272	39,498	41,877	45,006	54,759	50,219
December.....	43,438	53,243	52,185	55,905	70,080	59,125
Total.....	403,981	462,146	551,388	505,147	570,936	581,473

*Provisional

Table 17(c): Production of Assembled Vehicles

	Number					
Month/Year	2013	2014	2015	2016	2017	2018*
January.....	435	511	601	398	274	395
February.....	536	792	949	622	576	529
March.....	496	737	922	680	642	548
April.....	584	798	813	715	436	409
May.....	560	832	827	677	434	407
June.....	609	862	745	464	323	366
July.....	617	862	757	491	483	587
August.....	578	889	931	605	302	434
September.....	590	897	1,029	646	351	606
October.....	652	924	1,139	360	370	569
November.....	733	905	972	507	364	476
December.....	558	505	496	376	322	327
Total.....	6,948	9,514	10,181	6,541	4,877	5,653

**Provisional*

Table 17(d): Production of Galvanized Sheets

Metric Tonnes						
Month/Year	2013	2014	2015	2016	2017	2018*
January.....	25,528	22,090	21,304	21,330	26,230	23,919
February.....	22,874	18,573	20,078	20,102	22,994	21,890
March.....	26,296	21,267	22,797	20,120	22,574	22,048
April.....	26,010	25,989	20,674	23,109	23,225	21,434
May.....	23,866	27,433	23,132	21,980	23,081	22,271
June.....	26,147	24,465	20,358	20,180	15,424	21,434
July.....	25,007	21,779	18,415	18,320	22,640	23,252
August.....	27,398	25,753	20,871	24,190	15,296	22,630
September.....	25,051	26,126	20,581	21,045	24,188	23,509
October.....	27,588	26,732	26,024	18,328	21,312	23,906
November.....	26,628	25,763	25,764	19,143	24,357	22,877
December.....	23,706	18,539	16,938	19,431	21,438	21,266
Total.....	306,099	284,509	256,938	247,278	262,759	270,437

**Provisional*

Table 17(e): Cement Production and Consumption

Metric Tonnes										
Month/Year	2015		2016		2017		2018		2019*	
	Production	Consumption	Production	Consumption	Production	Consumption	Production	Consumption	Production	Consumption
January.....	511,298	459,227	533,490	472,218	565,440	535,018	523,625	499,260	485,178	479,983
February.....	465,471	417,591	531,813	506,914	491,307	460,044	508,648	495,128	470,146	469,809
March.....	550,556	483,218	541,438	493,410	570,522	537,948	520,674	507,791	507,037	505,465
April.....	537,452	480,801	568,253	538,118	535,061	497,821	496,527	475,365		
May.....	516,513	472,675	585,929	551,501	482,762	441,110	464,422	449,160		
June.....	516,185	465,828	547,238	505,067	513,313	496,172	492,053	485,112		
July.....	570,904	451,461	575,193	556,244	553,631	527,774	518,656	511,240		
August.....	553,929	478,011	591,612	559,766	451,651	427,594	538,071	531,119		
September.....	561,235	518,435	528,494	504,639	531,067	506,694	518,641	514,568		
October.....	557,589	530,913	573,034	552,243	510,140	488,813	504,959	502,719		
November.....	510,747	480,641	584,780	547,359	489,376	454,727	496,346	494,038		
December.....	486,306	455,345	554,121	522,663	536,021	484,172	487,312	483,198		
TOTAL.....	6,338,184	5,694,146	6,715,395	6,310,142	6,230,293	5,857,887	6,069,934	5,948,698	1,462,361	1,455,257

*Provisional

Table 17(f): Milk Intakes in the Formal Sector

Million Litres							
Month/Year	2013	2014	2015	2016	2017	2018	2019*
January.....	49.32	54.04	57.17	56.80	45.13	51.55	54.89
February.....	42.48	46.60	37.80	52.83	46.24	47.30	46.55
March.....	40.28	49.26	35.77	48.41	38.64	49.85	44.03
April.....	44.43	45.01	35.59	54.35	47.09	52.01	
May.....	50.62	43.56	52.97	49.49	47.24	49.63	
June.....	44.46	44.47	51.02	66.37	48.87	50.33	
July.....	43.52	40.52	51.59	58.47	42.55	53.18	
August.....	37.90	41.76	50.94	56.15	54.95	52.56	
September.....	38.79	41.66	51.66	43.67	55.81	56.37	
October.....	38.87	43.52	55.42	56.93	58.14	55.25	
November.....	45.33	44.32	68.28	54.09	55.21	57.02	
December.....	47.03	45.32	58.87	50.66	51.51	68.15	
Total.....	523.03	540.04	615.85	648.22	535.71	643.20	145.47

Source: Kenya Dairy Board

* Provisional

Fig. 9: Milk Intake in the Formal Sector

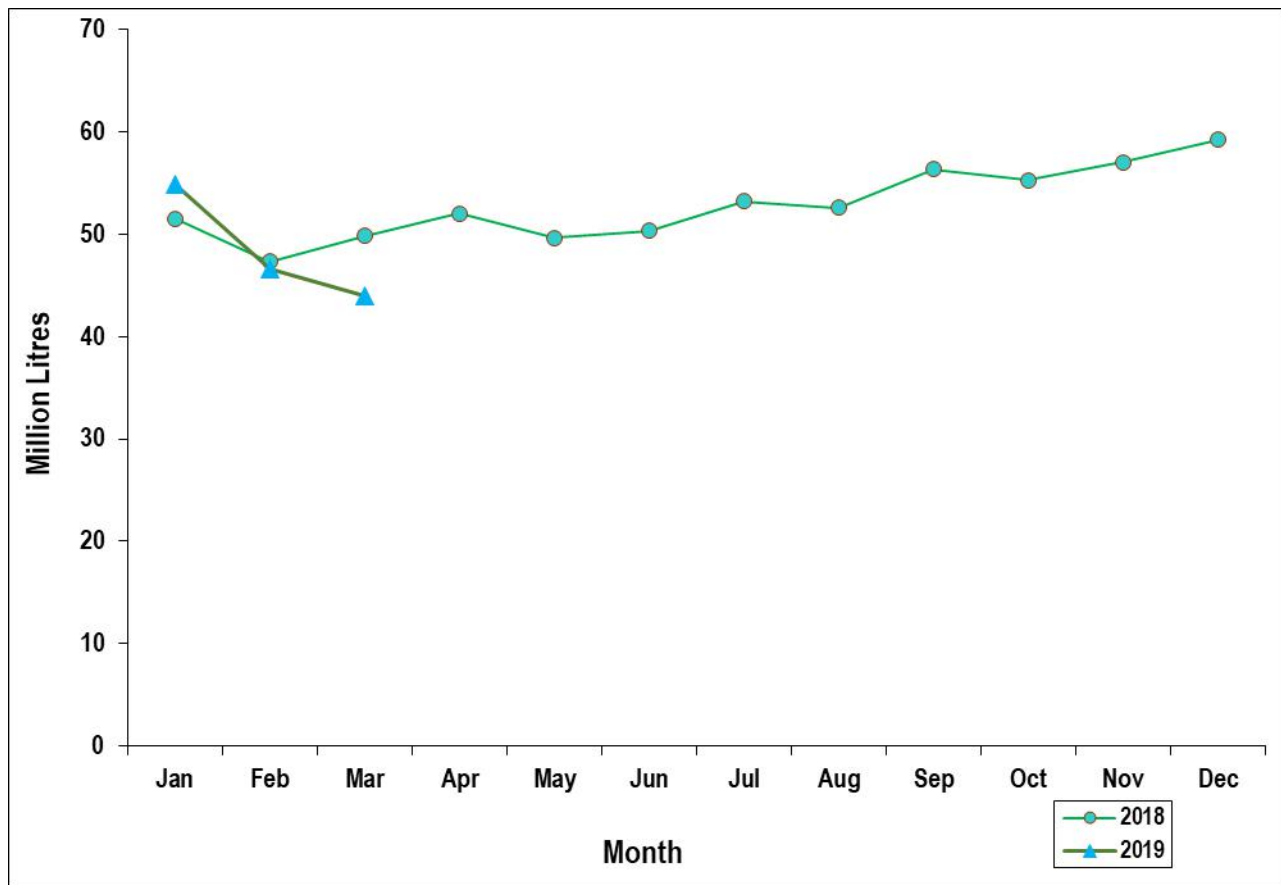


Table 18: Visitor Arrivals through J.K.I.A and M.I.A

Month	AIRPORT		Number*
	JKIA	MIA	Total
2017			
January.....	94,892	13,742	108,634
February.....	88,450	11,800	100,250
March.....	88,271	9,007	97,278
April.....	94,478	5,121	99,599
May.....	90,411	3,554	93,965
June.....	102,890	5,377	108,267
July.....	129,162	7,640	136,802
August.....	110,085	10,593	120,678
September.....	102,659	8,772	111,431
October.....	89,515	9,069	98,584
November.....	88,990	10,795	99,785
December.....	106,616	14,192	120,808
2018			
January.....	107,006	16,172	123,178
February.....	100,060	14,928	114,988
March.....	103,075	12,549	115,624
April.....	97,522	5,698	103,220
May.....	97,896	4,772	102,668
June.....	120,214	6,304	126,518
July.....	161,458	9,964	171,422
August.....	152,665	13,019	165,684
September.....	120,580	10,034	130,614
October.....	113,838	11,994	125,832
November.....	110,987	14,336	125,323
December.....	117,949	18,276	136,225

Source: Kenya Tourism Board

* Visitors arrivals exclude Kenyans

Fig. 10: Visitor Arrivals through J.K.I.A and M.I.A

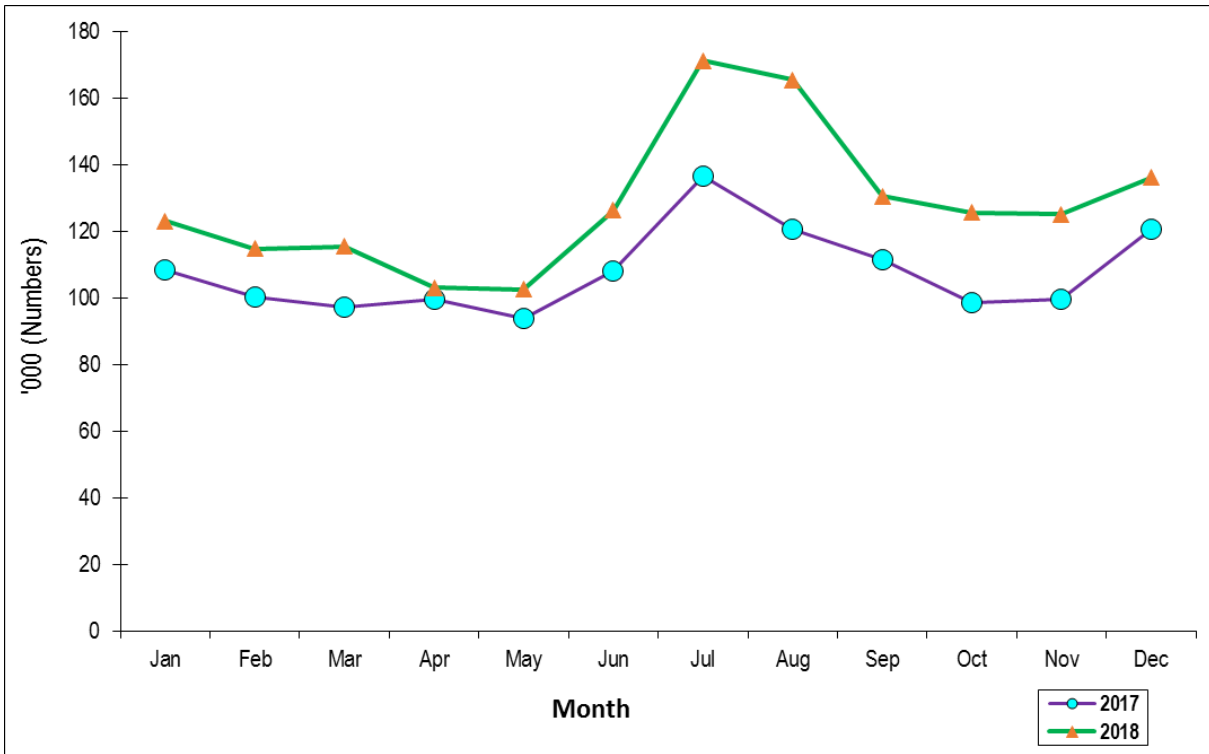


Table 19(a): Jomo Kenyatta international airport-Embarked Passengers by Port of Destination

PORTS/MONTH	2018											2019		
	Mar	Apr	May	June	Jul	Aug	Sep	Oct	Nov	Dec	Jan	Feb	Mar	
Amsterdam.....	11,368	10,635	11,189	12,567	13,523	11,589	10,482	11,566	10,645	10,790	11,348	10,211	9,847	
Brussels.....	0	0	0	0	0	0	0	0	0	0	0	0	0	
London.....	11,066	10,852	9,912	11,400	10,105	11,722	11,496	10,713	8,872	8,023	7,744	7,502	9,273	
Paris.....	3,465	3,795	3,537	4,522	5,433	5,098	3,042	4,326	7,655	6,351	5,479	3,569	5,648	
Zurich.....	1,413	245	53	787	2,938	4,881	2,558	3,988	2,165	2,727	2,849	3,134	2,307	
Other Europe.....	7,592	8,123	7,179	8,605	12,370	14,173	12,445	10,370	259	1,049	8,844	117	142	
Total Europe.....	34,904	33,650	31,870	37,881	44,369	47,463	40,023	40,963	29,596	28,940	36,264	24,533	27,217	
New York.....								492	3,044	4,320	5,174	2,720	3,906	
Other North America.....								0	0	0	0	0	0	
Total North America.....								492	3,044	4,320	5,174	2,720	3,906	
Dubai.....	19,492	18,199	16,088	19,419	23,779	21,975	23,570	18,597	16,003	21,654	19,759	16,002	20,560	
Jeddah.....	791	942	1,640	1,161	1,000	3,331	1,036	809	932	1,079	827	582	780	
Other Middle East.....	16,589	17,811	16,268	17,161	21,679	30,633	21,947	17,254	16,753	21,384	21,224	15,706	15,300	
Total Middle East.....	36,872	36,952	33,996	37,741	46,458	55,939	46,553	36,660	33,688	44,117	41,810	32,290	36,640	
Mumbai.....	2,567	6,953	2,486	2,634	2,664	3,300	3,179	2,299	2,656	2,942	2,115	1,522	2,247	
Bangkok.....	1,625	1,584	1,067	514	1,579	2,987	1,895	1,398	1,546	1,312	1,058	41	1,493	
Other Far East.....	521	1,140	532	951	568	1,788	1,266	1,436	764	834	694	180	573	
Total Far East.....	4,713	9,677	4,085	4,099	4,811	8,075	6,340	5,133	4,966	5,088	3,867	1,743	4,313	
Addis Ababa.....	14,119	15,706	14,436	13,950	15,975	20,817	16,645	14,947	15,121	16,931	14,030	14,426	15,734	
Bujumbura.....	1,161	1,419	1,285	1,215	1,484	1,093	528	449	667	596	510	479	405	
Dar-es-alaam.....	5,387	6,755	8,258	6,820	6,284	6,168	6,339	4,014	5,104	5,604	4,608	4,752	4,351	
Entebbe.....	9,084	9,754	10,464	9,620	9,565	10,189	11,317	10,864	10,863	9,747	6,940	5,744	9,098	
Kigali.....	3,959	3,363	3,329	3,355	4,511	4,476	4,063	4,165	4,085	5,569	3,894	4,460	5,010	
Kinshasa.....	319	528	354	1,014	441	292	391	416	470	282	295	155	661	
Other East & Central Africa.....	2,936	3,050	2,822	2,974	2,741	5,397	3,882	3,147	2,484	2,109	1,896	3,405	2,004	
Total East & Central Africa..	36,965	40,575	40,948	38,948	41,001	48,432	43,165	38,002	38,794	40,838	32,173	33,421	37,263	
Mauritius.....	555	709	565	1,370	1,531	2,233	1,686	1,445	1,457	2,008	974	746	1,273	
Seychelles.....	586	1,183	710	1,324	854	1,149	699	551	567	759	435	294	602	
Zanzibar.....	1,716	2,179	1,347	2,640	2,890	3,258	2,784	2,879	2,451	3,968	2,208	3,293	2,051	
Other Indian Ocean Islands.....	994	1,034	914	982	453	2,179	938	1,013	903	814	386	166	1,089	
Total Indian Ocean Islands.	3,851	5,105	3,536	6,316	5,728	8,819	6,107	5,888	5,378	7,549	4,003	4,499	5,015	
Abidjan.....	504	327	407	603	685	897	454	464	380	388	320	425	516	
Douala.....	466	642	354	683	301	256	1,785	363	173	99	629	259	346	
Lagos.....	1,492	1,658	1,238	1,270	1,792	2,807	1,293	1,318	1,478	1,360	1,039	684	1,404	
Accra.....	1,348	1,062	1,019	998	1,432	1,699	1,356	1,178	1,007	1,186	723	753	1,459	
Other West Africa.....	209	19	194	265	206	34	245	603	557	634	340	273	442	
Total West Africa.....	4,019	3,708	3,212	3,819	4,416	5,693	5,133	3,926	3,595	3,667	3,051	2,394	4,167	
Johannesburg.....	10,476	7,939	7,906	7,762	8,042	8,350	9,058	8,209	7,511	6,867	5,916	4,780	8,859	
Harare.....	793	868	1,094	882	1,058	824	1,280	1,104	778	974	567	75	662	
Lilongwe.....	539	658	662	182	691	718	835	797	1,093	1,044	654	672	810	
Lusaka.....	819	724	928	770	851	993	1,355	1,184	1,038	822	624	272	809	
Cape Town.....	0	0	0	0	1,263	0	985	0	0	0	1,566	1,505	0	
Other South Africa.....	1,299	1,386	1,114	975	1,405	2,282	1,548	1,215	4,528	1,085	1,074	692	1,028	
Total Southern Africa.....	13,926	11,575	11,704	10,571	13,310	13,167	15,061	12,509	14,948	10,792	10,401	7,996	12,168	
Cairo.....	1,773	1,691	1,712	1,957	2,309	2,641	2,288	2,319	2,519	2,941	2,584	2,261	2,960	
Khartoum.....	858	539	535	660	446	756	646	578	583	587	538	5	428	
Juba.....	2,731	3,404	2,735	2,580	3,072	2,655	2,161	1,829	2,737	2,264	2,841	2,183	2,361	
Other North Africa.....	712	584	468	646	149	1,303	767	604	715	462	824	564	100	
Total North Africa.....	6,074	6,218	5,450	5,843	5,976	7,355	5,862	5,330	6,554	6,254	6,787	5,013	5,849	
Other International.....	6,853	5,997	6,267	6,872	8,822	8,277	7,785	7,763	7,356	6,711	7,306	6,487	7,022	
Total International.....	148,177	153,457	141,068	152,090	174,891	203,220	176,029	156,666	147,919	158,276	150,836	121,096	143,560	

Table 19(b): Jomo Kenyatta international airport- Landed Passengers by Port of Origin

PORTS/MONTH	2018										2019		
	Mar	Apr	May	Jun	Jul	Aug	Sep	Oct	Nov	Dec	Jan	Feb	Mar
Amsterdam.....	17,078	15,955	16,512	18,169	20,703	17,531	15,734	18,239	17,035	18,336	17,050	15,039	14,715
Brussels.....	0	5	0	0	0	0	0	0	0	0	0	0	0
London.....	15,279	12,403	14,303	15,679	17,089	16,484	15,071	15,799	13,294	13,226	12,615	11,651	11,958
Paris.....	4,470	6,577	5,958	8,957	12,073	10,992	9,727	9,756	8,680	9,695	9,302	8,492	8,086
Zurich.....	3,798	3,982	3,421	4,521	6,071	5,670	5,044	4,751	3,736	5,505	4,383	4,173	3,801
Other Europe.....	7,695	6,427	7,697	9,737	14,249	13,111	11,653	11,169	8,269	8,951	8,717	7,991	7,507
Total Europe.....	48,320	45,349	47,891	57,063	70,185	63,788	57,229	59,714	51,014	55,713	52,067	47,346	46,067
New York.....								238	3,060	5,540	4,352	2,826	3,256
Other North America.....								0	0	0	0	0	0
Total North America.....								238	3,060	5,540	4,352	2,826	3,256
Dubai.....	21,397	23,273	21,900	27,611	33,360	30,553	24,933	23,028	22,262	30,198	25,590	22,110	25,473
Jeddah.....	1,099	1,226	1,178	3,469	2,360	3,368	3,465	2,061	2,178	2,361	1,649	1,686	1,659
Other Middle East.....	17,346	16,349	16,469	21,234	30,701	27,625	18,966	16,391	20,547	23,967	19,866	15,518	15,410
Total Middle East.....	39,842	40,848	39,547	52,314	66,421	61,546	47,364	41,480	44,987	56,526	47,105	39,314	42,542
Mumbai.....	8,783	9,175	10,485	8,333	8,571	8,347	7,864	7,596	6,708	7,642	8,280	7,498	8,142
Bangkok.....	6,504	6,938	6,397	6,050	7,151	6,944	6,117	6,165	6,288	6,311	6,462	5,254	6,453
Other Far East.....	1,827	1,867	1,637	1,807	2,635	2,378	2,215	2,125	2,026	2,093	1,810	1,762	1,923
Total Far East.....	17,114	17,980	18,519	16,190	18,357	17,669	16,196	15,886	15,022	16,046	16,552	14,514	16,518
Addis Ababa.....	16,947	18,458	18,197	17,754	22,414	20,902	18,531	18,014	19,074	22,580	18,609	18,232	17,775
Bujumbura.....	3,179	2,361	2,491	2,625	3,318	3,045	1,493	1,309	1,494	1,523	1,250	1,387	1,550
Dar-es-alaam.....	10,557	10,249	10,096	10,245	12,191	12,563	11,161	11,292	11,472	11,315	10,722	10,215	10,918
Entebbe.....	18,347	16,510	18,337	18,909	19,118	19,817	19,990	18,902	18,384	19,296	16,442	16,105	18,037
Kigali.....	7,458	7,083	7,087	7,487	7,257	7,620	7,616	6,830	7,332	8,019	6,628	5,834	7,527
Kinshasa.....	2,975	4,089	2,817	1,910	2,999	3,536	3,198	3,210	2,245	2,668	1,616	1,847	2,662
Other East & Central Africa.....	6,106	6,241	5,358	7,176	8,844	9,453	7,482	7,657	6,484	6,612	6,826	7,090	7,126
Total East & Central Africa....	65,569	64,991	64,383	66,106	76,141	76,936	69,471	67,214	66,485	72,013	62,093	60,710	65,595
Mauritius.....	528	634	383	947	1,561	1,600	1,451	1,354	1,919	1,999	1,818	1,396	1,412
Seychelles.....	1,420	1,521	1,641	1,094	1,261	1,394	1,009	1,177	1,548	1,670	1,287	827	1,093
Zanzibar.....	6,226	4,655	3,655	5,587	6,458	8,532	7,360	7,249	6,399	6,914	6,423	6,857	6,197
Other Indian Ocean Islands.....	5,576	6,142	6,148	3,882	5,874	6,843	6,988	8,345	12,357	10,628	8,922	7,135	7,468
Total Indian Ocean Islands....	13,750	12,952	11,827	11,510	15,154	18,369	16,808	18,125	22,223	21,211	18,450	16,215	16,170
Abidjan.....	1,585	1,636	1,746	1,591	2,024	1,712	1,849	1,752	1,507	1,546	1,410	1,586	1,954
Douala.....	95	0	4	10	0	0	0	80	962	946	858	758	942
Lagos.....	2,336	3,561	3,171	3,506	3,971	4,094	3,514	3,805	4,161	4,629	4,918	4,212	4,319
Accra.....	3,924	3,900	3,753	3,848	3,995	4,024	3,967	3,987	3,804	3,540	3,628	3,137	3,603
Other West Africa.....	4,529	3,795	4,003	3,795	4,081	4,008	4,732	3,890	2,291	2,696	1,872	1,748	2,014
Total West Africa.....	12,469	12,892	12,677	12,750	14,071	13,838	14,062	13,514	12,725	13,357	12,686	11,441	12,832
Johannesburg.....	15,231	14,374	15,082	16,522	14,898	15,449	16,130	13,698	14,543	17,842	12,813	11,916	12,660
Harare.....	1,844	2,272	2,225	2,306	2,221	2,711	2,500	2,206	2,982	4,398	3,227	2,002	2,210
Lilongwe.....	2,275	2,249	2,268	2,267	2,992	2,920	2,508	2,577	2,246	2,668	1,896	1,237	2,203
Lusaka.....	3,516	3,782	3,903	3,879	3,879	4,290	4,194	3,889	3,673	4,293	3,234	2,571	3,240
Cape Town.....	0	0	0	932	959	968	1,145	1,100	1,272	2,354	1,776	1,438	2,124
Other South Africa.....	6,001	6,361	5,793	6,537	6,349	6,712	6,757	6,325	7,122	7,956	6,200	5,071	5,726
Total Southern Africa.....	28,867	29,038	29,271	32,443	31,298	33,050	33,234	29,795	31,838	39,511	29,146	24,235	28,163
Cairo.....	1,575	1,857	1,772	2,518	2,794	2,871	2,595	2,462	2,012	2,312	2,294	1,894	1,909
Khartoum.....	1,666	1,658	1,768	1,514	2,005	1,810	1,962	1,948	1,818	1,549	1,016	746	804
Juba.....	4,172	4,484	3,620	3,934	3,593	3,796	3,274	3,045	3,082	3,667	2,578	2,952	3,693
Other North Africa.....	528	558	499	611	1,393	1,195	640	620	546	1,131	586	511	33
Total North Africa.....	7,941	8,557	7,659	8,577	9,785	9,672	8,471	8,075	7,458	8,659	6,474	6,103	6,439
Other International.....	7,528	7,355	8,625	8,102	8,120	9,538	7,353	6,338	337	6,340	6,646	7,033	6,737
Total International.....	241,400	239,962	240,399	265,055	309,532	304,406	270,188	260,379	255,149	294,916	255,571	229,737	244,319

Table 19(c): New Vehicle Registration

Body Type	2017			2018											
	Nov	Dec	Total	Jan	Feb	Mar	Apr	May	Jun	Jul	Aug	Sep	Oct	Nov	Dec
Saloons.....	1,139	1,086	11,376	972	487	559	887	917	641	1,031	853	733	1,010	879	869
Station Wagons...	5,951	5,800	55,322	5,113	3,272	3,285	5,121	5,783	3,901	6,271	5,581	4,803	6,958	5,914	5,814
Vans.....	498	465	5,484	522	370	347	444	450	367	506	437	409	491	452	447
Pick Ups.....	409	337	4,382	498	351	333	402	401	317	448	1,021	616	418	496	638
Mini Buses.....	47	29	459	45	-	52	59	51	41	58	54	56	63	70	61
Buses.....	87	88	1,072	75	96	81	96	74	108	111	89	79	108	90	92
Lorries.....	729	734	7,460	778	677	691	589	687	670	734	907	638	729	660	734
Trailers.....	186	143	1,953	223	120	192	151	162	166	171	147	213	170	132	166
Motor Cycles.....	13,162	14,013	186,434	14,345	18,073	16,935	13,659	14,431	13,921	13,959	18,682	14,756	17,661	18,043	17,286
Three Wheelers...	462	340	5,167	704	373	479	283	465	670	557	596	554	604	626	595
Wheeled Tractors	203	175	2,703	313	243	235	174	235	122	278	194	179	191	279	211
Others.....	81	54	860	88	61	101	55	73	87	108	88	98	63	72	80
Totals.....	22,954	23,264	282,672	23,676	24,123	23,290	21,920	23,729	21,011	24,232	28,649	23,134	28,466	27,713	26,991

Source: National Transport and Safety Authority

Table 19(d): Passenger and Cargo Movement on the Standard Gauge Railway

Month	2018 [†]		2019*		2018 [†]		2019*	
	Number of Passengers	Revenue (Ksh Million)	Number of Passengers	Revenue (Ksh Million)	Tonnage	Revenue (Ksh Million)	Tonnage	Revenue (Ksh Million)
January.....	135,772	110.20	113,061	125.44	22,345.50	25.50	359,744.40	517.15
February.....	118,360	101.93	112,966	125.11	57,632.90	49.88	302,674.50	442.60
March.....	131,698	125.53			164,254.00	181.54		
April.....	140,581	91.97			208,576.87	258.50		
May.....	116,171	129.46			228,800.00	294.08		
June.....	127,381	132.37			268,787.00	425.34		
July.....	137,676	194.03			306,105.00	527.42		
August.....	165,971	120.75			309,902.00	429.42		
September.....	122,958	121.73			309,873.00	422.57		
October.....	128,456	165.44			344,283.00	476.13		
November.....	153,885	220.87			331,752.10	500.02		
December.....	186,718	97.29			346,362.40	500.70		
Total.....	1,665,627	1,611.57	226,027.00	250.55	2,898,673.77	4,091.09	662,418.90	959.74

Source: Kenya Railways Corporation

*Provisional

[†] Revised